

**coKin**<sup>®</sup>



**coKin**<sup>®</sup>  
CREATIVE FILTER SYSTEM

## COKIN : A WORLD OF FANTASY

Only few years ago, photographers and video users were asking for special effect filters. Nowadays, all over the world, they ask for COKIN filters.

Jean Coquin, a french professional photographer, is the inventor of the concept of "creative image" which came as a revolution to the world of photography, video and motion picture. This original and unique concept is based on the "COKIN CREATIVE FILTER SYSTEM" which includes :

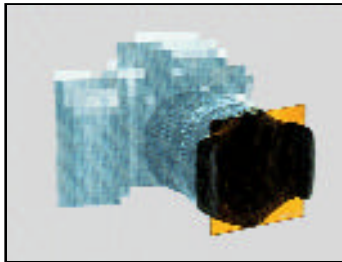
- The universal filter-holder adaptable to all lenses, thanks to a simple adaptor ring.
- A complete range of over 160 creative filters made of a high quality optical material considered today as being part of the most advanced technology.

This easy-to-use system, as well as the wide variety and high quality of the COKIN range, have already fascinated millions of users, photographic, video and motion picture. Amateurs and professionals can both create fantastic images.

But this system, as versatile as it is, cannot fulfill its optimum effectiveness without your own personal and unique approach of creativity, imagination and dreams.

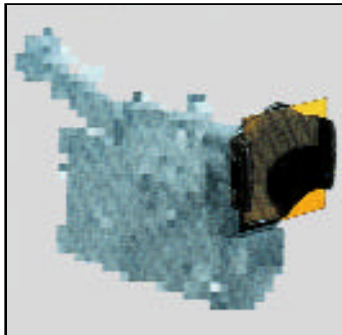
Indeed, thanks to the COKIN CREATIVE SYSTEM, each image can be modified and enhanced by your own creative input. COKIN shows you the way to live your own dreams : enter into the world of fantasy and creative images.

# THE COKIN UNIVERSALITY



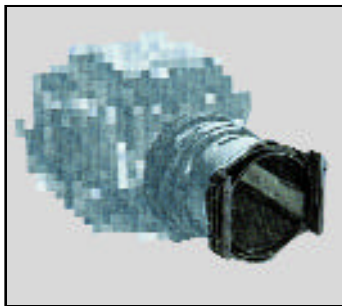
## Reflex

Whatever kind of reflex camera you use - autofocus or standard - 35mm, APS or digital - COKIN "A" or "P" filter-holders fit perfectly on all lenses with diameters from 36 to 82 mm, using a simple adaptor ring. The COKIN filter-holders have been recently redesigned in order to avoid interference in the rotation of the lens when the autofocus system is put into action.



## Video

COKIN filters have become indispensable to video camera users. COKIN's creative possibilities add impact to those unforgettable moments as well as to holiday images. Whatever the type of your video camera, VHS, VHS-C, SVHS-C, 8 mm, Hi8, Hi8/8, Digital Etc... filter-holders adapt easily and allow instant creative effects.



## Medium and Large Format

All photographers - amateurs and professionals - want to produce original, creative photos. COKIN filters are their indispensable tool. In order to meet with all adaptations, special rings of large diameters exist in the COKIN range up to 82 mm with thread, bayonet type or universal mount. The complete range of COKIN creative filters and accessories can therefore fit all medium and large format cameras to achieve thousands of personalized effects.



## Projector

Using your ordinary holiday photos, you can join the wonderful world of creative photography at home, in your spare time. All you need to do is to project your slides on a white, matt screen and rephotograph them using COKIN filters. Don't forget to use indoor film or a COKIN colour correction filter when taking these new images. Photograph the sea, colour in the sky, create a romantic atmosphere, all at home.

# THE COKIN SYSTEM



**Screw the adaptor ring onto your lens.**

Screw the adaptor ring onto your lens.

System "A" rings come in following diameters : 36 / 37 / 39 / 40.5 / 41 / 42 / 43 / 43.5 / 44 / 46 / 48 / 49 / 52 / 54 / 55 / 58 / 62 mm and Hasselblad B50.

System "P" rings in 48 / 49 / 52 / 55 / 58 / 62 / 67 / 72 / 77 / 82 mm and Hasselblad B50/B60/B70 and Rollei VI rings.



**Slide the filter-holder on the adaptor ring until it snaps in place.**

Slide the filter-holder on the adaptor ring until it snaps in place.

The filter-holder is now solidly attached to the lens, yet it can rotate both left and right.



**Slide the filter into one of the filter-holder slots.**

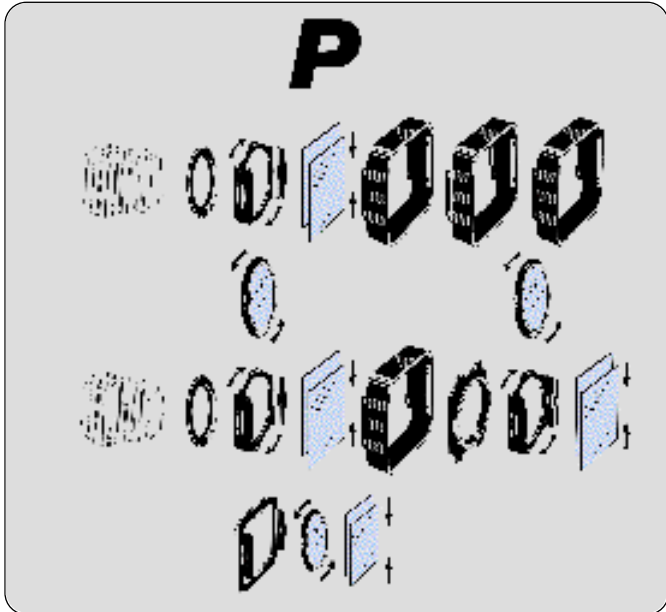
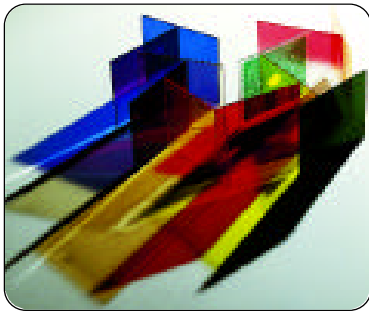
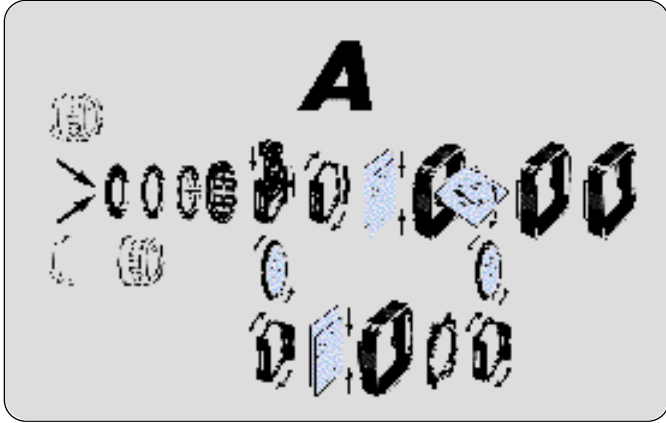
Slide the filter into one of the filter-holder slots.

The one closest to the filter-holder housing is the narrowest; it allows the use of round filters with notched edges (polarizers, stars filters...).

The two central slots are intended for square filters.

The outer slot can be used either for an additional filter or for a coupling ring.

# THE COKIN SYSTEM



As a professional photographer and extensive user of filters, Jean COQUIN has invented a range of filters which is unique for its quality and diversity.

It is important that a filter matches the optical precision of a lens. Definition, contrast and colour reproduction must not be sacrificed to creativity.

Which is why each COKIN creative filter is made of the material best adapted to the filter's ultimate use. Some filters are made out of organic glass (coloured and graduated filters, etc...) while other are made of mineral glass (polarizing filters, etc ...) , yet all undergo strict a quality control at each stage of production and guarantee photographers the quality provided by modern manufacturing technology.

The COKIN range can be classified into several families, the more important being :

- Colour filters, including Black and White, Colour Correctors, Neutral Density and UV/Skylight filters;
- Diffractors and Stars;
- Centre-Spots, Neutral and coloured;
- Pastels and Diffusers;
- Optical effects including Close-Up, Multi-Parallel and Multi-Images filters;
- Graduated filters, including standard colours, Sunset and Fluorescent colours;
- Polarizers - Neutral and coloured;
- Special effects such as Rainbow, Double Exposure, etc...

The COKIN filters can be used either individually or combined together which allows a great number of creative possibilities.

**AND NOW ... BE CREATIVE !!!**



Photo : L.Sierpe

Ref.001



Yellow

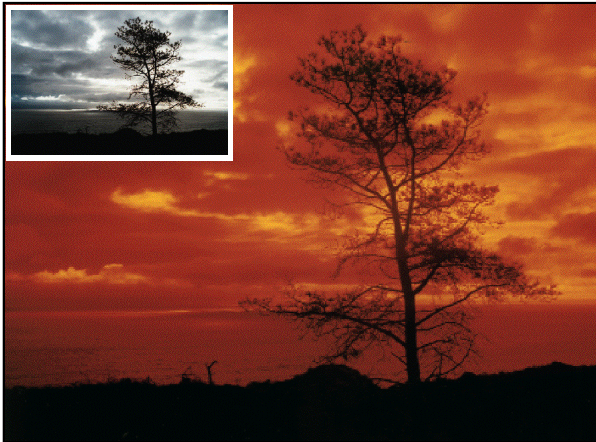


Photo : L.Sierpe

Ref.002



Orange



Photo : T.Loibel

Ref.003



Red





Green

Photo : L.Sierpe

Ref.004



Photo : C.Voisin



Sepia

Ref.005

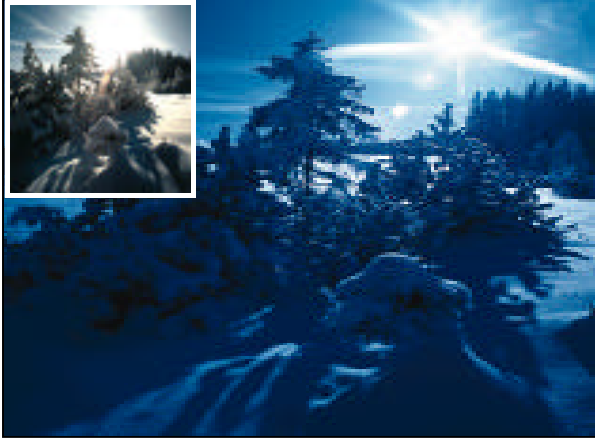


Yellow Green

Photo : L.Sierpe

Ref.006





Blue (80A)

Photo : K.Ender

Ref.020



Blue (82A)

Photo : L.Sierpe

Ref.023



Warm (81B)

Photo : P.Grataud

Ref.027



Orange (85A)

Photo : P.Grateaud

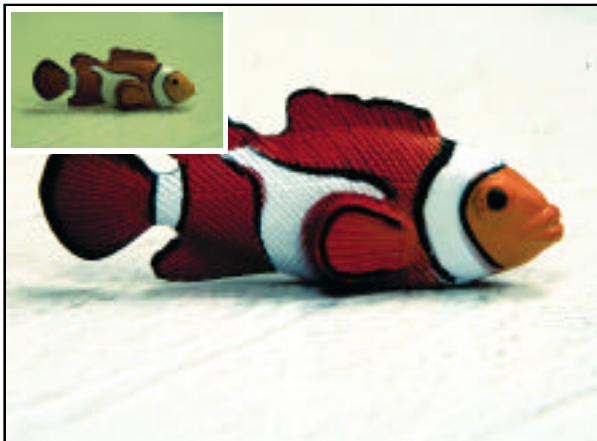
Ref.029



Warm (81D)

Photo : P.Grateaud

Ref.035



FLW

Photo : L.Sierpe

Ref.036



Photo :S.Rouland

Ref.037



Warm (81EF)



Photo : L.Sierpe

Ref. 040



Diffraction Cosmos



Photo : K.Ender

Ref.041



Diffraction Univers



Diffraction Galaxy

Photo : K.Ender

Ref. 042



SepiaLight

Photo : J.F.Fortchambre

Ref. 045

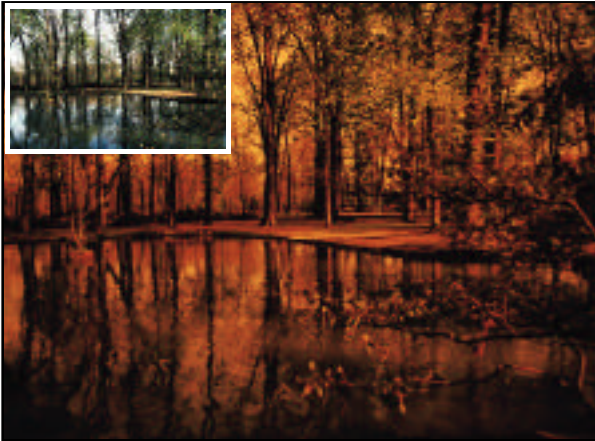


FID

Photo : L.Sierpe

Ref. 046

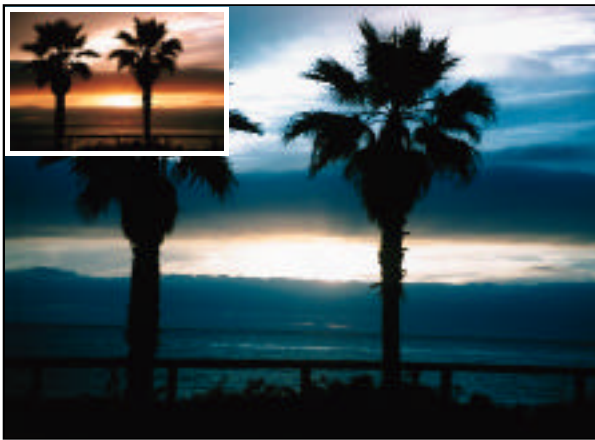




Gold

Photo : L.Sierpe

Ref.047



Cyan

Photo : L.Sierpe

Ref.050



Star 16

Photo : P.Grateaud

Ref.055



Photo : L.Sierpe

Ref.056



Star 8



Photo : L.Sierpe

Ref.057



Star 4

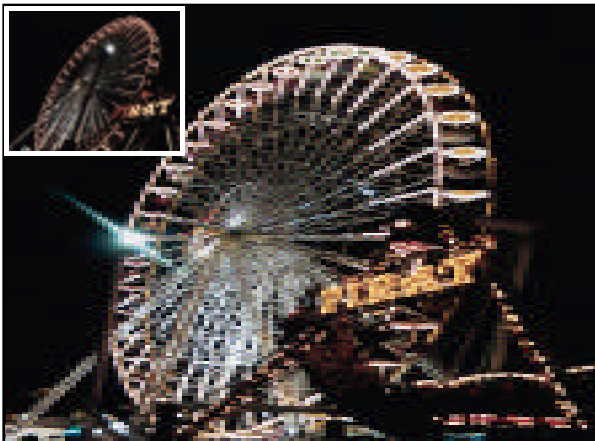


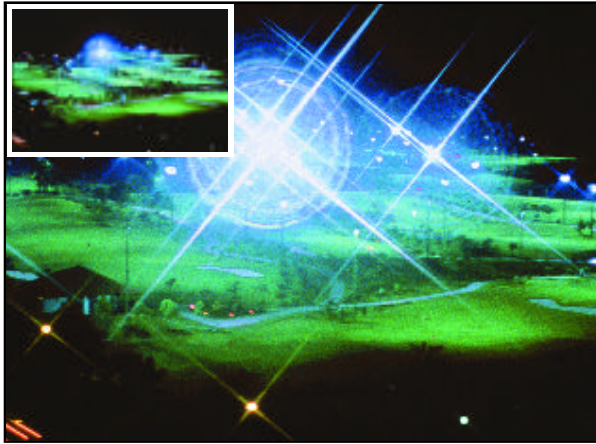
Photo : L.Sierpe

Ref.058



Star 2





Softstar

Photo : R.Eng

Ref.059



C. Spot Incolor 2

Photo : L.Sierpe

Ref.061



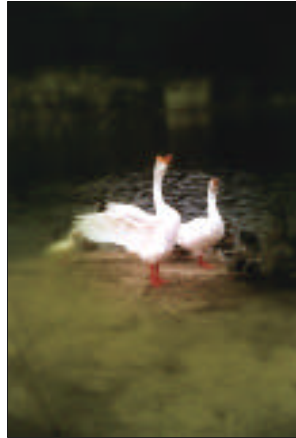
C. Spot Grey 2

Photo : P.Grateaud

Ref. 063



Photo : L.Sierpe



Ref.065



C-Spot Green



Photo : L.Sierpe

Ref.066



C-Spot Orange



Photo : L.Sierpe

Ref.068



C-Spot Red



Photo : L.Sierpe

Ref.070

C Spot WA Incolor 1



Photo : P.Grateaud

Ref.072

C Spot WA Grey 1



Photo : L.Sierpe

Ref. 074

C Spot WA Violet



Photo : G.Defontaine



C Spot WA Blue

Ref.077

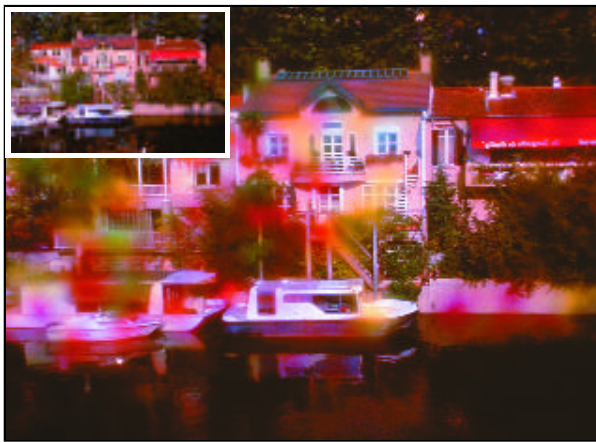


Photo : S.Rouland



Color Yarnish

Ref. 080



Photo : S.Rouland



Color Vaseline

Ref. 081





Color Diffuser

Photo : L.Sierpe

Ref. 082



Pastel 2

Photo : L.Sierpe

Ref.087



Cold Color Diffuser

Photo : P.Grateaud

Ref.088



Warm Color Diffuser

Photo : P.Grateaud

Ref. 089



Dreams 2

Photo : L.Sierpe

Ref.092



Close-Up +3

Photo : P.Grateaud

Ref.103





Photo : S.Rouland

Ref.112



Split-Field 2



Photo : L.Sierpe

Ref.120



Gradual Grey G1



Photo : L.Sierpe

Ref. 121



Gradual Grey G2



Photo : J.F.Fortichantre

Gradual Grey G2 Light



Ref.121 L



Photo : L.Sierpe

Gradual Blue B1



Ref.122

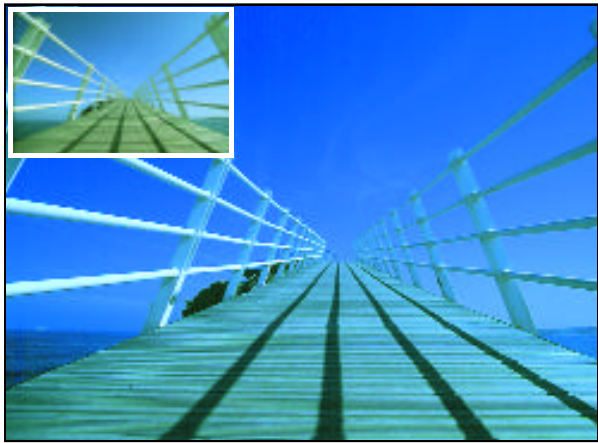


Photo : J.F.Fortichantre

Gradual Blue B2 Full



Ref.123 F



Photo : L.Sierpe

Ref. 124



Photo : J.F.Fortchantre

Ref. 125S



Photo : L.Sierpe

Ref.126





Gradient FFW

Photo : P. Grateaud

Ref.138



Oval C Spot White

Photo : P. Grateaud

Ref.140



Oval C Spot Black

Photo : P. Grateaud

Ref. 141





Photo : P.Grateaud

Ref.142

Net Filter 1 White

Net Filter 1 Black

Net Filter 2 White



Photo : P.Grateaud

Ref.143



Photo : P.Grateaud

Ref.144



Photo : P.Grateaud

Ref.145



Net Filter 2 Black



Photo : P.Grateaud

Ref.148



Wedding 1 White



Photo : P.Grateaud

Ref.149



Wedding 1 Black





Photo : L.Sierpe

Ref. 151



Gradual Fog 2

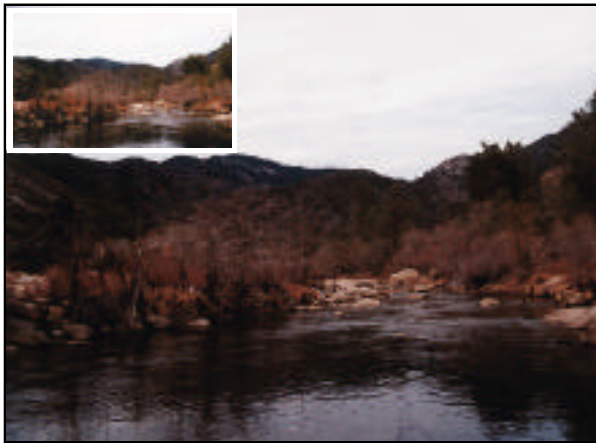


Photo : L.Sierpe

Ref. 153



Grey ND 4X



Photo : L.Sierpe

Ref.154



Grey ND 8X



Photo : P.Grateaud



Linear Polarizer

Ref. 160



Photo : S.Rouland



Polcolor Blue

Ref. 162

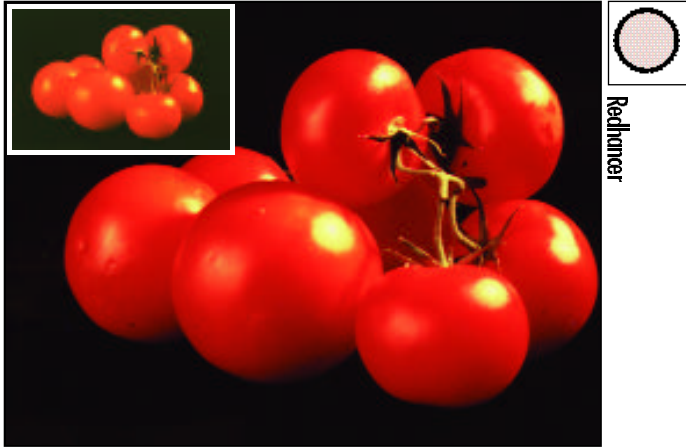


Photo : L.Sierpe



Circular Polarizer

Ref. 164



Red/Incar

Photo : P.Grateaud

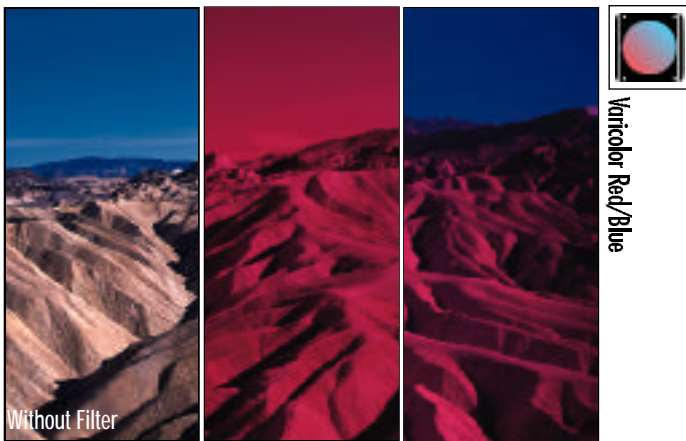
Ref.165



Varicolor Red/Green

Photo : J.F.Fortchante

Ref.170



Varicolor Red/Blue

Photo : J.F.Fortchante

Ref. 171



Photo : J.F.Fortchantre

Ref.172



Varicolor Pink/Orange



Photo : J.F.Fortchantre

Ref.173



Varicolor Blue/Yellow

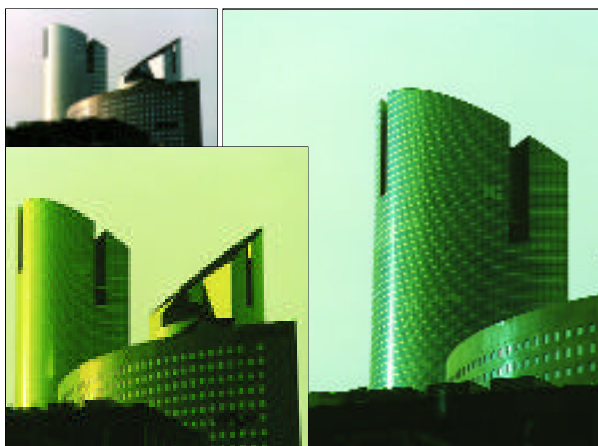
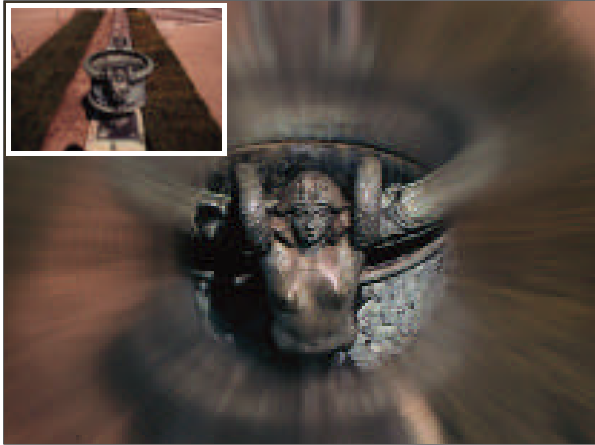


Photo : P.Gateaud

Ref.174



Varicolor Blue/Lime



Radial Zoom

Photo : L.Sierpe

Ref. 185



Rainspot

Photo : L.Sierpe

Ref. 186



Cyclone

Photo : S.Rouland

Ref.187





Photo : P.Grateaud

Ref. 188



Softspot



Photo : S.Rouland

Ref.189



Sunspot



Photo : S.Rouland

Ref.194



Gelatrine Holder





Photo : P.Grateaud

Ref.196



Rainbow 2



Photo : L.Sierpe

Ref.198



Sunset 2



Photo : L.Sierpe

Ref.202



Multi-images x 7



Photo : L.Sierpe



Multi-Images x 13



Ref.203



Photo : K.Ender



Multi-Parallel



Ref.209



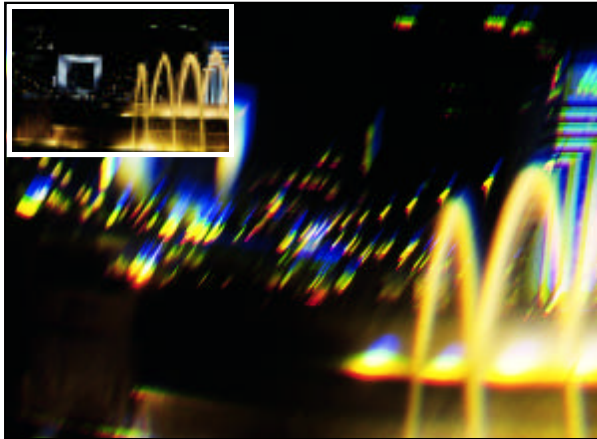
Photo : L.Sierpe



Super Speed



Ref.217



Prism

Photo : S.Rouland

Ref. 219



Mirage

Photo : K. Ender

Ref. 220



UV

Photo : S.Rouland

Ref. 231



Photo : L.Sierpe

Ref. 340



Creative Mask



Photo : P.Grateaud

Ref. 342



Double Mask 1



Photo : P.Grateaud

Ref. 345



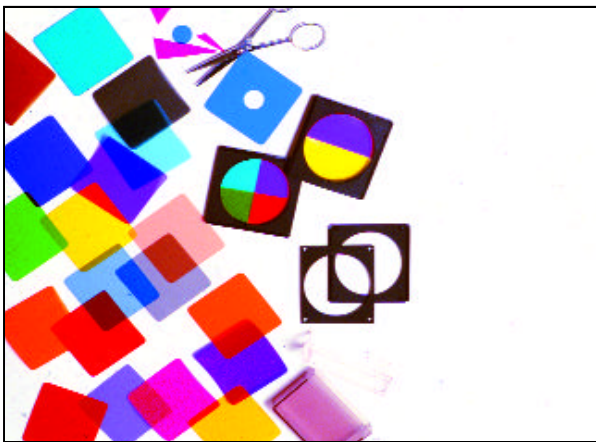
Double Mask 2



Double Exposure

Photo : S.Rouland

Ref.346



Creative Filters

Photo : S.Rouland

Ref.375



Pre-Shaped Frames

Photo : L.Sierpe

Ref. 397





Photo : L.Sierpe

Ref.661



Gradual Fluo Yellow 2



Photo : L.Sierpe

Ref.662



Gradual Fluo Orange 1



Photo : J.F.Fortchantre

Ref.664



Gradual Fluo Red 1



Photo : S.Rouland

Ref. 666

Gradual Fluo Blue 1

Gradual Fluo Meuve 2

Gradual Fluo Pink 1



Photo : L.Sierpe

Ref. 669



Photo : G.Defontaine

Ref.670



C. Spot Pink/Blue

Photo : P.Grateaud

Ref.672



C. Spot Blue/Yellow

Photo : P.Grateaud

Ref.674



Sunsoft

Photo : L.Sierpe

Ref.694





Photo : P.Grateaud



Champagne

Ref. 695



Photo : P.Grateaud



Softwarm

Ref. 696

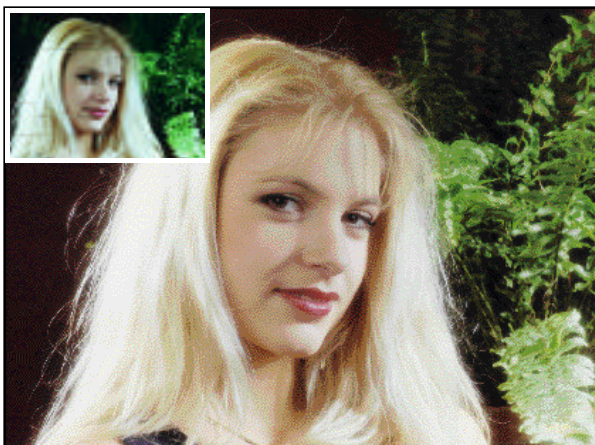


Photo : P.Grateaud



Diffuser Light

Ref.820



Photo : P.Grateaud

Ref.830



Diffuser 1



Photo : P.Grateaud

Ref.840



Diffuser 2



Photo : L.Sierpe

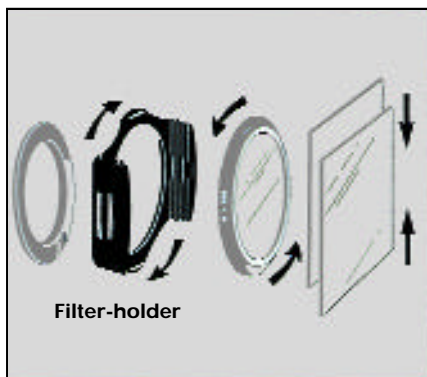
Ref. 850



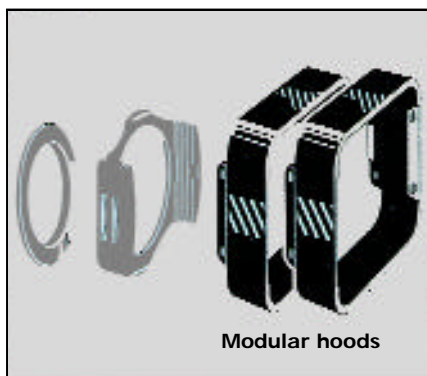
Diffuser 3



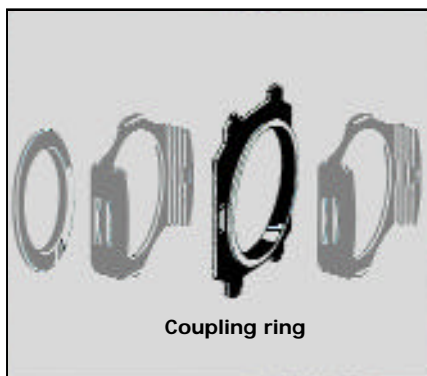
## THE COKIN TOOLS



The heart of the COKIN Creative System is the filter-holder. Once attached to the lens, thanks to an adaptor ring, it can carry not only round and square filters but also modular accessories (modular hood, coupling rings etc...). The notches found both on the filter-holder and on the edge of round filters enable you to rotate the round filters to just the right position. Square filters slide within filter-holder slots in order to decenter special effects.



The modular lens hood intensifies contrasts and eliminates unwanted reflections. It fits simply onto the filter-holder by just pressing on the upper and lower parts of the lens hood. You can attach several modular hoods to one another, depending on the focal length of your lens.



The coupling ring enables you to attach a second filter-holder, thereby increasing the number of filters used. The coupling ring slides into the filter-holder's outer slots. It is particularly useful for orientating square filters in different directions (graduated, multi-images filters etc...).

## THE COKIN TOOLS



### System "A" or System "P" ?

System "A" for lenses between 36 and 62 mm in diameter is recommended for focal length over 35 mm. For shorter focal lengths 20-24 or 28 mm as well as for wide-angle zooms (24-50 mm, 28-85 mm, 35-135 mm), System "P" is strongly recommended. It is available in diameters ranging from 48 to 82 mm and eliminates vignetting (dark edges).

### A or P System ?



### A/P Adaptor (P249)

The A/P adaptor lets you use System "A" filters with a "P" holder. It is therefore not necessary to buy "P" filters if you already own equivalent "A" filters. Vignetting may nevertheless occur at focal lengths under 35 mm, and you should therefore watch out for this.

### A/P adaptor



### Filter-Holder Cap (A252/P252)

A filter-holder cap is particularly useful for all those who wish to leave the filter-holder on the lens permanently. This adaptable cover slides into the narrow slot nearest the filter-holder housing, thus protecting the camera lens.

### Cap on filter-holder



### Ring Cap (A253/P253)

The COKINcreative system includes numerous accessories, including a lens cap which fits onto the adaptor ring. The filter-holder can thus be changed rapidly from one lens to another, an adaptor ring remains on each lens, the cap thus protecting both ring and lens.

### Cap on ring



### Modular Hood and Coupling Ring

Very useful, the modular hood can take a coupling ring on its outer edge. Shifting the filters away from the frontal lens makes new creative effects possible. It absolutely must be tried!

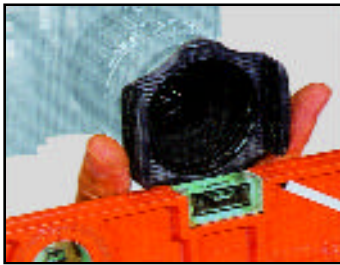
### Modular hood and coupling ring

## THE COKIN TOOLS



### Autofocus

Some autofocus systems using highly rapid, but not very powerful motors, require that the nipple at the base of the filter-holder be removed (ring side), so that the ring can rotate freely within the filter-holder when actioning the autofocus system.



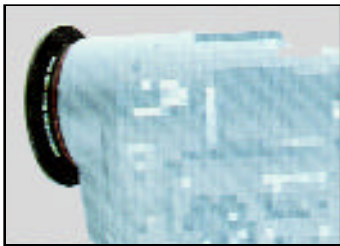
### Free Rotation with Autofocus

You merely need to hold the filter-holder horizontal with just two fingers.



### Extension Rings

Some wide-angle and video zooms have a retractable lens assembly which means that the COKIN filter-holder may inhibit the use of some focal lengths. To remedy this situation, use a protective screw-in COKINfilter (UV or SKY1A) and add one or several "extension rings" between the screw-in filter and the adaptor ring of the filter-holder.



Extension rings are also useful with some home video cameras which have elements obstructing the free rotation field of the filter-holder.



### Universal Ring

For lenses with non-standard diameters (or with damaged threads), there exists a so-called "universal" ring. It is attached to the outside of the lens and will fit on all lenses under 75 mm ("A" system) or 84 mm ("P" system).

**ABSORPTION DATA**

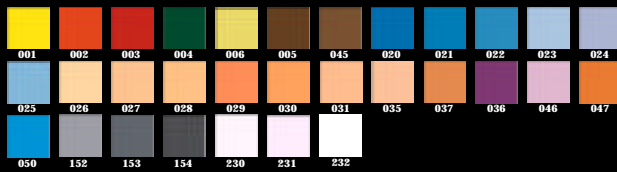
REF	DESIGNATION	FILTER FACTOR	F-STOP	REF	DESIGNATION	FILTER FACTOR	F-STOP
001	Yellow	2	1	128	Gradual Pink P1	1.3-4	1/3-2
002	Orange	2.5	1 1/3	129	Gradual Pink P2	1.3-4	1/3-2.5
003	Red	8	3	130	Gradual Emerald E1	1.3-4	1/3-2
004	Green	4	2	131	Gradual Emerald E2	1.3-8	1/3-3
005	Sepia	4	2	132	Gradual Yellow Y1	1.3-4	1/3-2
006	Yellow Green	1.5	2/3	133	Gradual Yellow Y2	1.3-8	1/3-3
020	Blue (80A)	2.4	1 1/3	138	Gradual FLW	1.3-2	1/3-1
021	Blue (80B)	2	1	139	Gradual FLD	1.3-2	1/3-1
022	Blue (80C)	2.4	1 1/3	140	Oval C.Spot White	1.3	1/3
023	Blue (82A)	1.3	1/3	141	Oval C.Spot Black	1.3	1/3
024	Blue (82B)	1.5	2/3	142	Net Filter 1 White	1.3	1/3
025	Blue (82C)	1.6	2/3	143	Net Filter 1 Black	1.3	1/3
026	Warm (81A)	1.4	1/3	144	Net Filter 2 White	1.3	1/3
027	Warm (81B)	1.4	1/3	145	Net Filter 2 Black	1.3	1/3
028	Warm (81C)	1.4	1/3	148	Wedding 1 White	1.3	1/3
029	Orange (85A)	2	1	149	Wedding 1 Black	1.3	1/3
030	Orange (85B)	2	1	150	Gradual Fog 1	1.3	1/3
031	Orange (85C)	2.3	1 1/3	151	Gradual Fog 2	1.3	1/3
035	Warm (81D)	1.3	1/3	152	Grey ND 2X	2	1
036	FLW	2.4	1 1/3	153	Grey ND 4X	4	2
037	Warm (81EF)	1.5	2/3	154	Grey ND 8X	8	3
040	Diffraction Cosmos	1.3	1/3	160	Linear Polarizer	4	2
041	Diffraction Univers	1.3	1/3	161	Polacolor Red	4	2 1/3
042	Diffraction Galaxy	1.3	1/3	162	Polacolor Blue	4	2 1/3
045	Sepialight	2	1	163	Polacolor Yellow	4	2 1/3
046	FLD	2	1	164	Circular Polarizer	4	2
047	Gold	1.5	2/3	165	Redhancer	1.5	2/3
050	Cyan	2.3	1 1/3	170	Varicolor Red/Green	4	2
055	Star 16	1.5	2/3	171	Varicolor Red/Blue	4	2
056	Star 8	1.5	2/3	172	Varicolor Pink/Orange	4	2
057	Star 4	1.5	2/3	173	Varicolor Blue/Yellow	4	2
058	Star 2	1.5	2/3	174	Varicolor Blue/Lime	4	2
059	Softstar	1	.	185	Radial Zoom	1.3	1/3
060	C.Spot Incolor 1	1	.	186	Rainspot	.	.
061	C.Spot Incolor 2	1.3	1/3	187	Cyclone	1.5	2/3
062	C.Spot Grey 1	1.3	1/3	188	Softspot	1.3	1/3
063	C.Spot Grey 2	1.3	1/3	189	Sunspot	1.5	2/3
064	C.Spot Violet	1.3	1/3	194	Gelatin Holder	.	.
065	C.Spot Green	1.3	1/3	195	Rainbow 1	1.3	1/3
066	C.Spot Orange	1.3	1/3	196	Rainbow 2	1.3	1/3
067	C.Spot Blue	1.3	1/3	197	Sunset 1	2	1
068	C.Spot Red	1.3	1/3	198	Sunset 2	4	2
070	C.Spot W A Incolor 1	1	.	201	Multi-image X 5	1.5	2/3
071	C.Spot W A Incolor 2	1.3	1/3	202	Multi-image X 7	1.5	2/3
072	C.Spot WA Grey 1	1.3	1/3	203	Multi-image X13	1.5	2/3
073	C.Spot W A Grey 2	1.3	1/3	204	Multi-image X25	1.5	2/3
074	C.Spot WA Violet	1.3	1/3	209	Multi-parallel	1.5	2/3
075	C.Spot W A Green	1.3	1/3	216	Speed	2	1
076	C.Spot WA Orange	1.3	1/3	217	Super Speed	2	1
077	C.Spot WA Blue	1.3	1/3	219	Prism	2	1
078	C.Spot W A Red	1.3	1/3	220	Mirage	.	.
080	Color Varnish	.	.	230	Skylight	.	.
081	Color Vaseline	.	.	231	U.V.	.	.
082	Color Diffuser	1.5	2/3	232	Skylight 1B	.	.
086	Pastel 1	1.3	1/3	340	Creative Mask	.	.
087	Pastel 2	1.3	1/3	342	Double Mask1	.	.
088	Cold Color Diffuser	1.3	1/3	345	Double Mask2	.	.
089	Warm Color Diffuser	1.3	1/3	346	Double Exposure	.	.
091	Dreams 1	1.3	1/3	375	Creative Filters	.	.
092	Dreams 2	1.3	1/3	376	Basic Filters	.	.
093	Dreams 3	1.3	1/3	397	Pre-shaped Frames	.	.
101	Close-up +1	1.3	1/3	660	Gradual Flu Yellow 1	1.3-2	1/3-1
102	Close-up +2	1.3	1/3	661	Gradual Flu Yellow 2	1.3-4	1/3-2
103	Close-up +3	1.3	1/3	662	Gradual Flu Orange 1	1.3-2	1/3-1
111	Split-field +1	1.3	1/3	663	Gradual Flu Orange 2	1.3-4	1/3-2
112	Split-field +2	1.3	1/3	664	Gradual Flu Red 1	1.3-2	1/3-1
113	Split-field +3	1.3	1/3	665	Gradual Flu Red 2	1.3-4	1/3-2
120	Gradual Grey G1	1.3-2	1/3-1	666	Gradual Flu Blue 1	1.3-2	1/3-1
121	Gradual Grey G2	1.3-4	1/3-2	667	Gradual Flu Blue 2	1.3-4	1/3-2
121L	Gradual Grey G2 Light	1.3-4	1/3 1.2/3	668	Gradual Flu Mauve 1	1.3-2	1/3-1
121S	Gradual Grey G2 Soft	1.3-8	1/3-3	669	Gradual Flu Mauve 2	1.3-4	1/3-2
121F	Gradual Grey G2 Full	1.2/3-8	1/3-3	670	Gradual Flu Pink 1	1.3-2	1/3-1
122	Gradual Blue B1	1.3-2	1/3-1	671	Gradual Flu Pink 2	1.3-4	1/3-2
123	Gradual Blue B2	1.3-4	1/3-2	672	C.Spot Pink/Blue	2	1
123L	Gradual Blue B2 Light	1.3-2	1/3-1	673	C.Spot Yellow/Pink	2	1
123S	Gradual Blue B2 Soft	1.3-4	1/3-2	674	C.Spot Blue/Yellow	2	1
123F	Gradual Blue B2 Full	1.5-8	1.2/3-3	694	Sunsoft	1.3	1/3
124	Gradual Tobacco T1	1.3-2	1/3-1	695	Champagne	1.3	1/3
125	Gradual Tobacco T2	1.3-16	1/3-4	696	Softwarm	1.5	2/3
125L	Gradual Tobacco T2 Light	1.3-4	1/3-2	820	Diffuser Light	1.3	1/3
125S	Gradual Tobacco T2 Soft	1.3-8	1/3-3	830	Diffuser 1	1.3	1/3
125F	Gradual Tobacco T2 Full	1.5-8	2/3-3	840	Diffuser 2	1.3	1/3
126	Gradual Mauve M1	1.3-4	1/3-2	850	Diffuser 3	1.3	1/3

NOTA : The above data are for information only. Figures can be altered depending on the shooting conditions (light, flash, type of lens etc.). When justified, measures have been made on two parts of the filter.



# THE COKIN CREATIVE FILTER COLLECTION

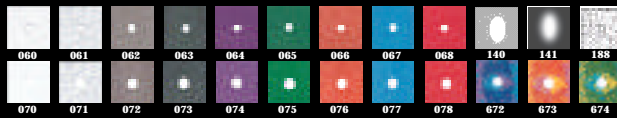
## COLOR 1 COLORÉS



## DIFFRACTORS -STARS 2 DIFFRACTEURS -ÉTOILES



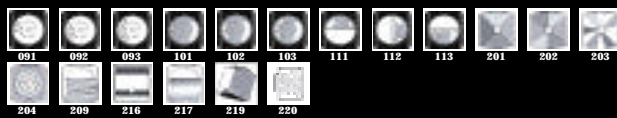
## CENTRE-SPOTS 3 CENTRE-SPOTS



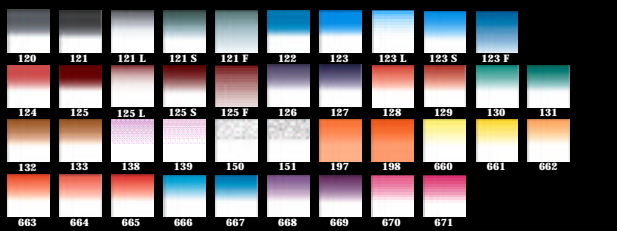
## PASTELS -DIFFUSERS 4 PASTELS -DIFFUSEURS



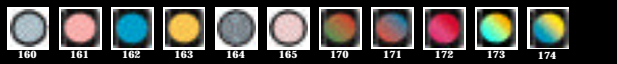
## OPTICAL EFFECTS 5 EFFETS OPTIQUES



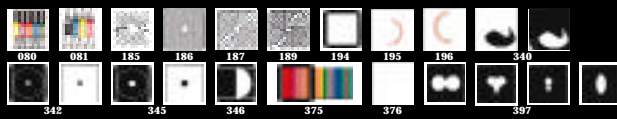
## GRADUATED 6 DÉGRADÉS

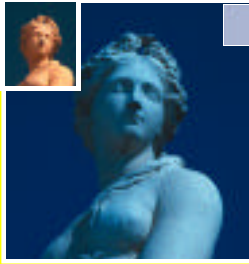


## POLARIZERS 7 POLARISSEURS



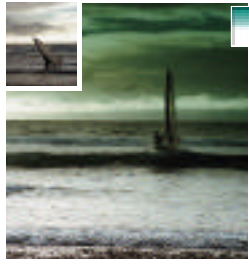
## SPECIAL EFFECTS 8 EFFETS SPÉCIAUX





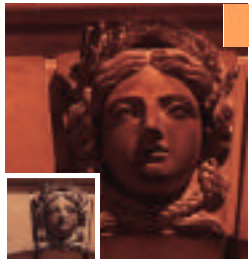
Blue (623) Ref. 024

Photo L. Sime



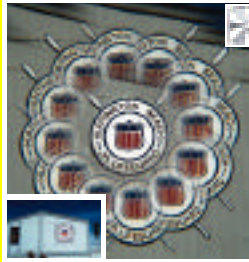
Gradual Emerald E1 Ref. 130

Photo L. Sime



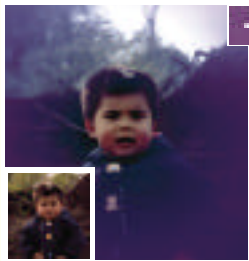
Orange (653) Ref. 030

Photo L. Sime



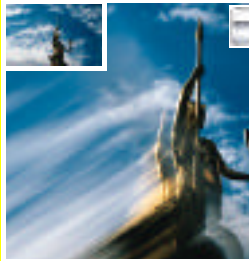
Multihues x 13 Ref. 203

Photo L. Sime



C. Spot Violet Ref. 054

Photo L. Sime



Super Speed Ref. 217

Photo L. Sime

