



SUPPORT THE ART
OF PHOTOIMAGING

AB1 AB SERIES ALUMINUM BALL HEAD



3PHAB1

AB1 AB SERIES

ALUMINUM BALL HEAD

The Strength of Steel.

The Mass of Aluminum.

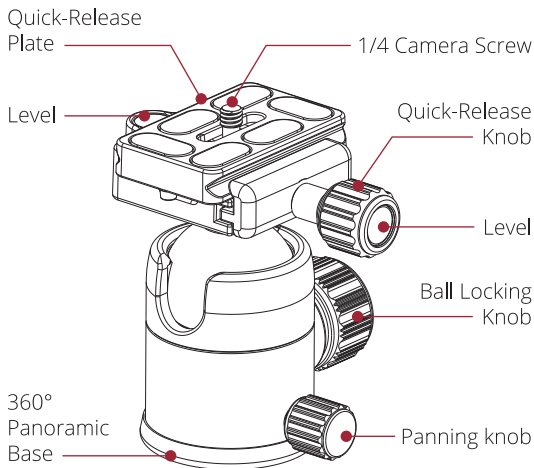
The Precision of 3POD.

On The Ball Support!

FEATURES:

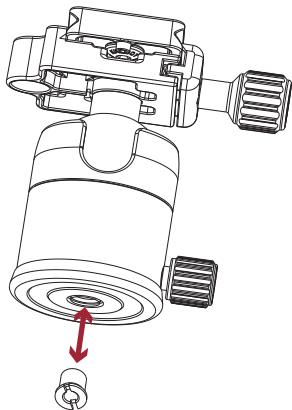
- Handles the load with a capacity of up to 8.8 pounds/4 kg.
- Turn Heads with Silky Smooth Panning.
- Superior Arca Swiss Standard QR System.
- Precision Drag for Panoramic Versatility.
- On the Level Bubble Orientation Levels.
- Keeps it firm at any angle.

The 3Pod AB1 Ball Head Instructions.

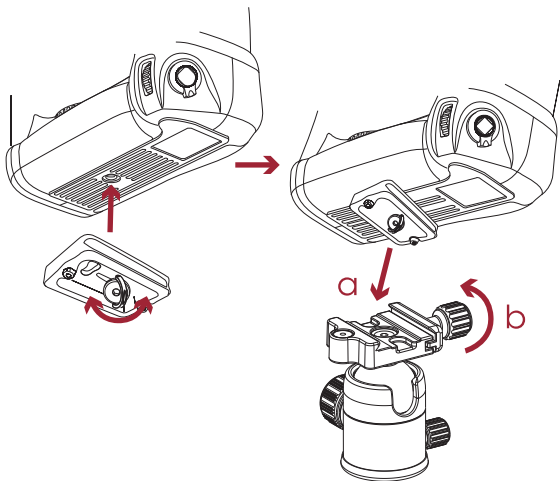



Here's how to have a ball with the head:

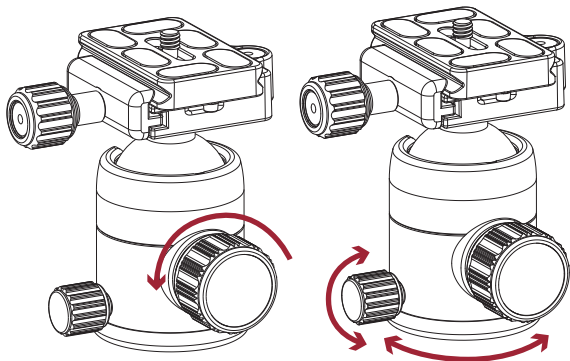
1. Join the Ball Head
your tripod's loading
plate. There is a $\frac{3}{8}$ "
bolt protruding from
the plate. There is a
 $\frac{3}{8}$ " tap in the base of
the ball head, as well
as a bushing that can
convert the $\frac{3}{8}$ " tap to
a $\frac{1}{4}$ "x20, if necessary.
2. Tighten the lock knob
on the ball head base
that controls the
panoramic pan. This
prepares the head
for securing the
coupling.
3. Screw the bolt into the base of the ball head.



4. Next, remove the Quick Release Plate from the head by turning the Quick Release Knob (b) counterclockwise to loosen the grip on the plate.
5. Screw the $\frac{1}{4}$ "x20 bolt of the Quick Release Plate to the bottom of the imaging device you want to use on the tripod.



6. Insert the device with the plate so that the dovetail fits within the rails of the Arca Swiss Quick Release grasp and tighten the Quick Release Knob clockwise. The plate has a user-preferred center position for the horizontal plane, depending on the balance point for the camera.
- 



7. The position of the imaging device is controlled by the Ball Locking Knob and the 360-degree Panoramic Base through the Panning Knob.
8. For extra stability for vertical stills, the head has a U-shaped groove for resting the attached device in a cradle for additional support. The neck that leads from the ball to the Quick Release Plate assembly fits into the slot.
9. Shoot stills or video with confidence that your device is firm and steady in the 3Pod AB1 Ball Head.

SPECIFICATIONS:

Series	AB
Materials	Black Hardened Aluminum
Height	3.25 in / 82.5 mm
Ball Diameter	1.26 / 32 mm
Base Diameter	1.77 in / 45 mm
Locks	One Knob Twist Damping / Lock
Load Capacity	8.8 lbs / 4 kg
Head Mount	Arca Swiss Quick Release System
Connectivity	3/8 inch standard socket thread
Camera Screw	Universal 1/4" x 20 post thread
Dimensions	3.7 x 2.5 x 4.3 in / 95 x 65 x 110 mm
Weight	10.4 oz / 295 g

FIVE YEAR 3POD LIMITED WARRANTY

3POD warrants to the original purchaser that your 3POD product shall be free from defects in material and workmanship for five (5) years from the date of purchase (or delivery as may be required in certain jurisdictions) or thirty (30) days after replacement, whichever comes later.

3POD's entire liability and your exclusive remedy for any breach of warranty shall be, at 3POD's option, to repair or replace the hardware, provided that the hardware is returned to the point of purchase or such other place as 3POD may direct with a copy of the sales receipt or dated itemized receipt. 3POD may, at its option, replace your product, offer to provide a functionally equivalent product, or repair any product with new, refurbished, or used parts as long as such parts are in compliance with the product's technical specifications. Any replacement hardware product will be warranted for the remainder of the original warranty period or thirty (30) days, whichever is longer, or for any additional period that may be applicable in your jurisdiction. If the product has been discontinued, the warranty provider reserves the right to replace it with an equivalent quality and function model.

This warranty does not cover problems or damage resulting from accident, abuse, misapplication, or any unauthorized repair, modification or disassembly, improper operation or maintenance, normal wear and tear, or usage not in accordance with product instructions or connection to an improper voltage supply, use of consumables, such as replacement batteries, not supplied by 3POD, except where such restriction is prohibited by applicable law.



Except where prohibited by applicable law, this warranty is nontransferable. It is limited to the original purchaser and the country in which the product was purchased. This warranty gives you specific legal rights, and you may also have other rights, including a more extended warranty duration that may vary under local laws.


To start a warranty claim, contact the 3POD Customer Service Department to obtain a return merchandise authorization ("RMA") number, and return the defective product to 3POD, along with the RMA number and proof of purchase.

Question about our product line?

Need Product Support?

We are proud of our products and celebrate our customers. We are with you, from product selection to everyday use. Be secure with your purchase and reach us as you need.

 212-647-9300
 brands@adorama.com

 Adorama Brands,
42 West 18th Street,
New York, NY 10011

You can always contact us at **BRANDS@ADORAMA.COM** for personal technical support. Our website contains a wide range of Support and FAQ pages with valuable technical assistance.

3POD is a registered trademark of ADORAMA CAMERA.

© 2022 Adorama Camera, Corp.

All Rights Reserved.