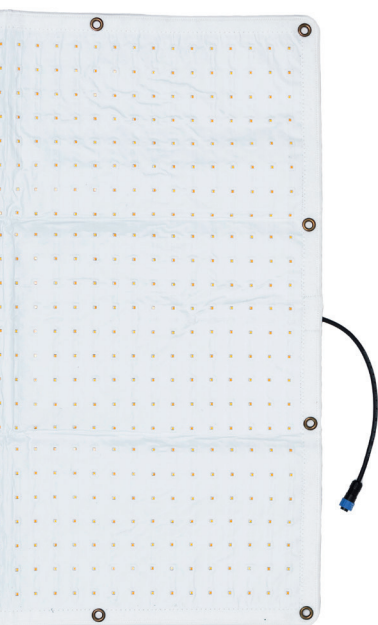


*Aladdin*



*Aladdin* FABRIC-LITE 20  
Bi-Color

USER MANUAL

---

THANK YOU FOR YOUR PURCHASE

User Manual

Version: 1.0

Aladdin Lights  
[info@aladdin-lights.com](mailto:info@aladdin-lights.com)

## START-UP GUIDE



1	Metal ring for mounting (can be attached to magnets)
2	Velcro
3	Connector plug

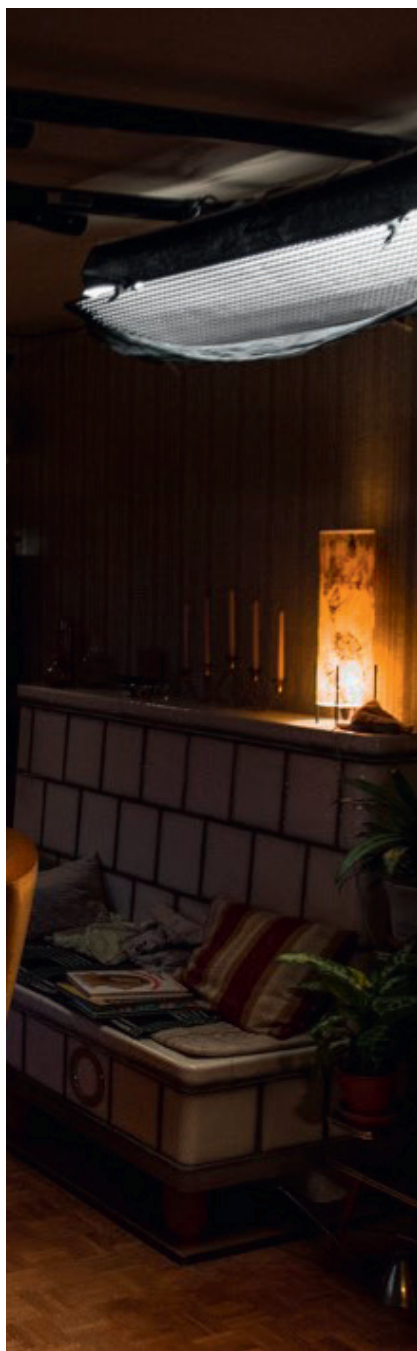
Unpack your panel and accessories from the kit. Plug in the panel connector to your dimmer-unit. Use the extension in between if needed. Plug in your dimmer-unit to a power outlet. Instead of using the power outlet, there's an integrated V-Mount or Gold-Mount plate on top of the dimmer. You can use batteries from 12-30V DC.

Just note that you need batteries which can handle the power draw of 200 watts from the panel. There's a simple calculation for that:

$$\frac{\text{POWER DRAW (W)}}{\text{BATTERY VOLTAGE (V)}} = \text{MIN. WORKING CURRENT (A)} = \frac{200 \text{ (W)}}{14.8 \text{ (V)}} = \mathbf{13.5 \text{ (A)}}$$

If you are using 14.8V batteries you need at least a working current of 13.5A. If your battery is rated at 14.8V and 200Wh/13.5Ah with a working current of 13.5A you can run your FABRIC-LITE 20 for one hour.

For any further questions about using our products please refer to our customer service or watch the instructional videos on [www.aladdin-lights.com](http://www.aladdin-lights.com) or [YouTube](#).



## IMPORTANT CAUTIONS AND WARNINGS

- Do not use near flammables and heaters.
- Do not expose the unit to direct sunlight for a long period (applies also for storing in a car).
- Do not use the dimmer wire or extension wire to hang or mount the panel.
- Do not bend or fold the panel more than 90 degrees.
- Do not tape directly on the LEDs of the panel - they can burn out.
- Do not damage the product with improper force or cause any impact with heavy objects.
- Do not cut the panel with sharp objects.
- Keep out of reach of children.
- The panel will heat up when running a long period of time on 100% power, make sure to have it in your eyesight at all times. Use the frame to assure enough air flow for heatreduction.
- Use the product only within the temperature range of -10°C – +40°C.
- Make sure the panel has cooled down before storing it in the pouch or any other case.
- When you have technical problems while using the product, stop using it immediately and contact your dealer / reseller.

## WARRANTY

We provide a one year warranty period after the purchase. This warranty covers repairs or a replacement for faulty products within this period. After this warranty has been expired, you can still get repairs for your product which will be charged extra.

Aladdin Lights reserves the right to refuse warranty service on products under disputable conditions.

## WARRANTY EXCLUSIONS

In case of any of the below listed causes, the warranty does not apply, even if it is within the free warranty period.

- Product failure due to consumer negligence.
- Product failure due to usage of not compatible power sources.
- Product failure due to disassembly by not official resellers/distributors.

## SELECTED OPTIONAL ACCESSORIES



FB2035BBALL

For strapping the panel to the frame.



FBS2035FR

3x3 frame with stud.



FBS2035GRID

Grid for 3x3 frame.

## TECHNICAL SPECIFICATIONS

Light source	200W Bi-Color LEDs
CRI	Ra 98
TLCI	98
Color temperature	2900K - 6300K
Beam angle	140°
Dimmer	Dimming: (0.5%–100%)
Cooling	Passive cooling
Dimmer input	12V to 30VDC
Power unit input	Automatic voltage 100V to 240VAC
Power consumption	200W
Dimensions	220mm (W) x 115mm (H) x 65mm (D)
Weight	930g
Connection	Connector plug
Temperature range	-10°C – +40°C
DMX512 support	With dimmer unit (in/out)
DMX512	2 Channels - White Bi-Color
Material	Fabric



*Aladdin*

[www.aladdin-lights.com](http://www.aladdin-lights.com)

PICTURE BY ALAVEZ BURGUETE DESIGN