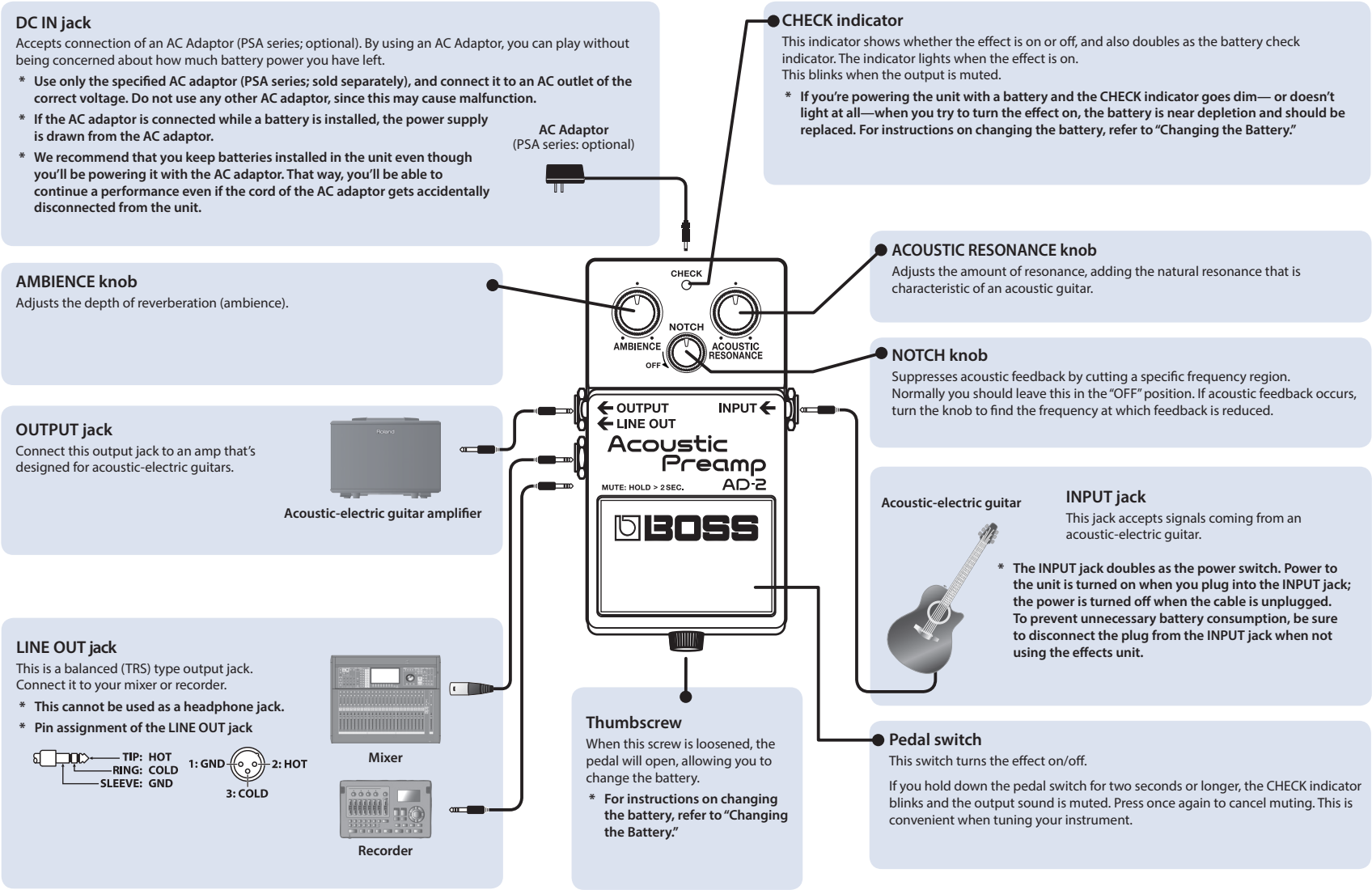


Before using this unit, carefully read the sections entitled: “USING THE UNIT SAFELY” and “IMPORTANT NOTES” (supplied on a separate sheet). After reading, keep the document(s) where it will be available for immediate reference.

Main Features

- The AD-2 is a preamp designed specifically for acoustic-electric guitars.
- It is equipped with an ACOUSTIC RESONANCE knob that adds the natural resonance of an acoustic guitar that’s often lost by the pickup of an acoustic-electric guitar, an AMBIENCE knob that adds rich reverberation, and a NOTCH knob that suppresses acoustic feedback.
- The AD-2 provides a LINE OUT jack (1/4-inch TRS phone type) that can output with optimal audio quality to a mixer or recorder. This can also be used as a balanced-output direct box.

Panel Descriptions




Precautions When Connecting

- To prevent malfunction and equipment failure, always turn down the volume, and turn off all the units before making any connections.
  - Once the connections have been completed, turn on power to your various devices in the order specified. By turning on devices in the wrong order, you risk causing malfunction and/or damage to speakers and other devices.
- When powering up:** Turn on the power to your amp last.
- When powering down:** Turn off the power to your amp first.
- Immediately after the unit is powered-on, the effect is on.

Outputting the reverberation (ambience) only to the OUTPUT jack

If you want to process the reverberation on your mixer, you can output the reverberant sound only from the OUTPUT jack; the reverberant sound is not output from the LINE OUT jack.

1. While holding down the pedal, turn on the power and continue holding down the pedal.  
The CHECK indicator is lit.
  2. Turn the AMBIENCE knob to specify the setting.
- The reverberant sound is output only from the OUTPUT jack (the check indicator blinks)

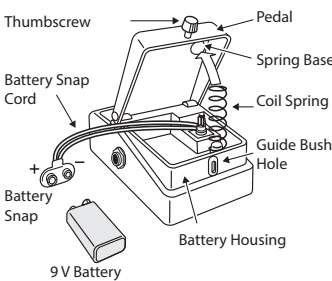


The reverberant sound is output from both the OUTPUT jack and the LINE OUT jack (the check indicator blinks rapidly)
3. Release the pedal to complete the setting.

Use of Battery

- A battery was installed in the unit before it left the factory. The life of this battery may be limited, however, since its primary purpose was to enable testing.
- If you handle batteries improperly, you risk explosion and fluid leakage. Make sure that you carefully observe all of the items related to batteries that are listed in “USING THE UNIT SAFELY” and “IMPORTANT NOTES” (supplied on a separate sheet).
- When operating on battery power only, the unit’s indicator will become dim when battery power gets too low. Replace the battery as soon as possible.
- Before turning the unit on/off, always be sure to turn the volume down. Even with the volume turned down, you might hear some sound when switching the unit on/off. However, this is normal and does not indicate a malfunction.
- If operating this unit on batteries, please use alkaline batteries.

Changing the Battery

1. Hold down the pedal and loosen the thumbscrew, then open the pedal upward.
- \* The pedal can be opened without detaching the thumbscrew completely.
- 
2. Remove the old battery from the battery housing, and remove the snap cord connected to it.
  3. Connect the snap cord to the new battery, and place the battery inside the battery housing.
- \* Be sure to carefully observe the battery’s polarity (+ versus -).
4. Slip the coil spring onto the spring base on the back of the pedal, and then close the pedal.
- \* Carefully avoid getting the snap cord caught in the pedal, coil spring, and battery housing.
5. Finally, insert the thumbscrew into the guide bush hole and fasten it securely.

Main Specifications

Nominal Input Level	-20 dBu
Input Impedance	10 MΩ
Nominal Output Level	OUTPUT: -20 dBu LINE OUT: -20 dBu
Output Impedance	OUTPUT: 1 kΩ LINE OUT: 600 Ω
Recommended Load Impedance	OUTPUT: 10 kΩ or greater LINE OUT: 600 Ω or greater
Power Supply	Alkaline battery (9 V, 6LR61) AC adaptor (PSA series; sold separately)
Current Draw	65 mA
	* Expected battery life under continuous use: Alkaline: 5 hours These figures will vary depending on the actual conditions of use.
Dimensions	73 (W) x 129 (D) x 59 (H) mm 2-7/8 (W) x 5-1/8 (D) x 2-3/8 (H) inches
Weight	420 g / 15 oz (including battery)
Accessories	Leaflet (“USING THE UNIT SAFELY,” “IMPORTANT NOTES,” and “Information”) Alkaline battery (9 V, 6LR61)
Options (sold separately)	AC adaptor (PSA-series)

- \* 0 dBu = 0.775 Vrms
- \* This document explains the specifications of the product at the time that the document was issued. For the latest information, refer to the Roland website.