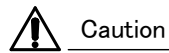


# Instruction Manual for 2PSC 2-channel portable platform

## Safety precautions



### Caution

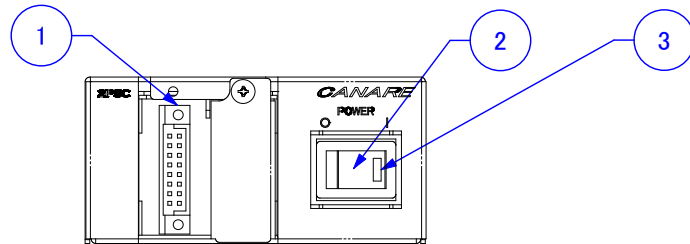
- Use the equipment only with the specified input power voltage. Using a voltage higher than specified may result in fire, electric shock, injury, or equipment failure.
- Do not disassemble or modify the equipment unless otherwise directed by the instruction manual. Failure to do so may result in fire, electric shock, injury, or equipment failure.
- Do not allow water or any foreign object into the equipment. Failure to do so may result in fire, electric shock, injury, or equipment failure.
- Do not use the equipment in areas of high humidity or dusty environments. Failure to do so may result in fire, electric shock, injury, or equipment failure.
- Do not block any ventilation openings. Failure to do so may result in fire, injury, or equipment failure.
- When the plug-in module is not in use, cover the empty space with a blank panel.
- Use only the DC power sources listed below.  
Lithium-ion battery pack : BP-GL95A (SONY)  
Power base station : EB-2 (IDX system technology inc.)
- Please inform your Canare dealer if the equipment breaks down, gets wet, has any foreign object, or operates in an abnormal manner.

## Features

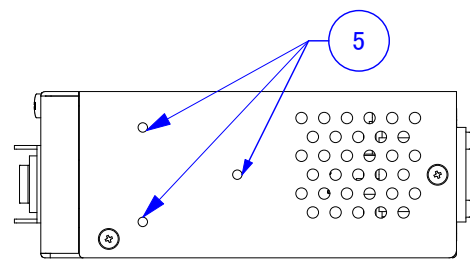
- Portable platform having 2 slots for Canare plug-in module installation.
- 2 slots equipped.
- DC operation.
- Wide operating voltage range.(DC:10V-18V)
- Hot swap available for a plug-in module insertion or extraction.
- Compact design (1RU height)
- Rohs compliance.

## Functions

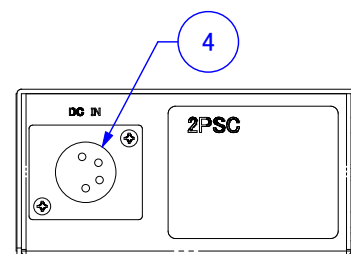
[Front panel]



[Side panel]



[Rear panel]

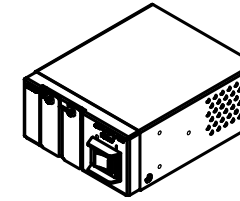


① Mounting slot	2 slots for plug-in module(Cover the open slot in which no plug-in module is mounted.)
② Power switch	Right side: Power on Left side: Power off
③ Power LED	Lights on green: Power on Off: Power off
④ DC inlet	The inlet for connecting the DC cord. (Connector model number: XLR4-32-F77) (Pin No.1: GND Pin No.4: +V)
⑤ Screw holes for M3	Depth max.5mm

## Installation

Install the equipment horizontally as shown in Fig.1.  
Do not install vertically.  
Failure to do so may result in fire, injury, or equipment failure.

Fig.1  
Installation direction



## Operating

1. Remove the mounted blank panels(1) covering the mounting slots.
2. Insert the plug-in module into the mounting slot by grabbing hold of its captive screw, as shown in Fig.2.
3. Align the captive screw with the corresponding screw hole in the equipment, and tighten the screw securely with a Phillips-head screwdriver.
4. Connect the coaxial cable to the plug-in module's BNC connector.
5. Be sure to clean the ferrule tip of the plug and the interior of the plug-in module's adapter as shown in Fig.3. If the fiber-optic connector becomes dirty, light loss could increase, possibly degrading the light communication quality.
6. Connect the single-mode fiber-optic cable with a SC connector to the plug-in module's SC adapter until the white line on the SC connector's tip is hidden. A secure connection is confirmed by a clicking sound and tactile feedback. If no clicking sound is heard or no tactile feedback is felt, re-perform the connection. Imprecise connections may result in malfunctions such as unstable optical power and disconnection of the SC connector.
7. Connect the DC cord to DC inlet(4).
8. Set the power switch(2) to the ON position to supply the power to the plug-in module. Power LED(3) lights green.

※ Read the instruction manual for details on each of the plug-in modules.

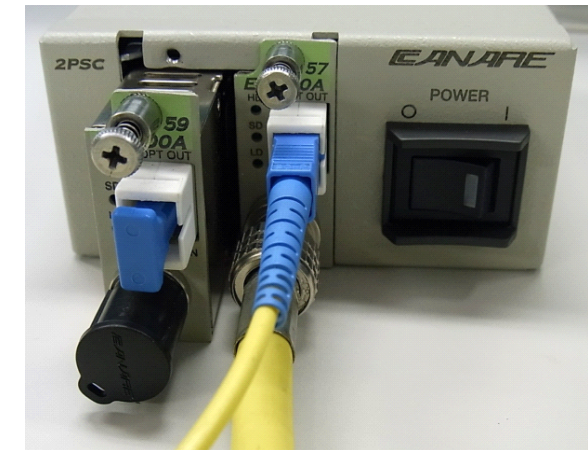


Fig.2 Plug-in module installation

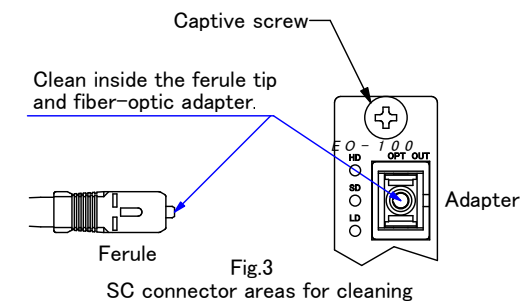


Fig.3  
SC connector areas for cleaning

## DIN connector pin assignment

- DIN connectors for supplying the power are located at the back of the plug-in module mounting slot. Its pins are assigned as shown in Fig.4, when viewed from the front.
- Following table shows the pin assignment.

Pin No.	Name	Functions
a1, b1	GND	Electrical ground
a2, b2	DC +5V	DC+5V OUTPUT
a3~a8 b3~b8	NC	No connect

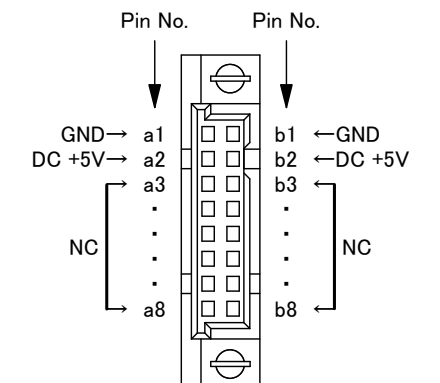


Fig.4 DIN connector pin assignment

## Specifications

No. of plug-in module	Max. 2 units (Hot swappable)	Operating temperature	-10°C to 40°C(14° F to 104° F) (No condensation)
Power source	DC 14.8V	Storage temperature	-20°C to 75°C(-4° F to 167° F) (No condensation)
Power consumption	Max. 0.4W (Excluding power consumption of plug-in module.)	Operating relative humidity	20% to 90%
Power output	Max. 4W	Dimensions(W/H/D)	90 × 44 × 110 (mm) 3 1/2 × 1 3/4 × 4 3/8(inches) (Excluding protrusions)
		Mass	Approx. 220g ( 7 3/4 oz.) (Excluding mass of plug-in module)
		Accessories	• Instruction manual(this document) 1