



SilverCloud® Sync User Guide

Real-Time GPS Tracking System



TABLE OF CONTENTS

1. ABOUT THIS GUIDE	3
1.1 THANK YOU	3
1.2 CONTACT INFORMATION	3
2. KEY FEATURES	4
2.1 ENVIRONMENT	4
2.2 SILVERCLOUD SYNC DATA PLAN OPTIONS	4
2.3 SILVERCLOUD ONLINE SOFTWARE FEATURES	5
3. ACTIVATING THE SILVERCLOUD SYNC	6
4. INSTALLING THE SILVERCLOUD SYNC	7
4.1 INSTALLING THE SILVERCLOUD SYNC SYSTEM.....	7
4.2 STARTING THE SYSTEM	9
4.3 LOGGING OUT OF THE SYSTEM	10
4.4 LIVE SUPPORT CHAT	10
5. STEP-BY-STEP INSTRUCTIONS	11
5.1 THE SILVERCLOUD CONTROL PANEL	11
5.2 THE SILVERCLOUD MAIN MENU	11
5.3 THE SILVERCLOUD MAIN MENU SELECTIONS	12
5.3.1 HISTORICAL PLAYBACK	12
5.3.2 DEVICE EDITOR	13
5.3.3 GROUP EDITOR	13
5.3.4 SETTING GEOFENCE ALERTS	13
5.3.5 SETTING PROXIMITY ALERTS	15
5.3.6 ROUTING UTILITY	15
5.3.7 NEAREST VEHICLE ROUTING UTILITY	16
5.4 SILVERCLOUD SHARESPOT® FEATURE	17
5.5 PROGRAM SETTINGS	18
6. REPORTS	19
6.1 GENERATING REPORTS	19
6.2 REPORT TYPES	20
6.2.1 CURRENT STATUS REPORT	20
6.2.2 ACTIVITY SUMMARY REPORT	20
6.2.3 EXCESSIVE SPEED REPORT	20
6.2.4 COMPLETE ACTIVITY BY DEVICE REPORT.....	20
6.2.5 STOPS AND MILEAGE REPORT	21
6.2.6 MILEAGE BY STATE REPORT	21
6.2.7 ALARMS BY DEVICE REPORT	21
7. GEOLOCATION-HOW ADDRESSES ARE DEFINED	22
8. SPECIFICATIONS	23

1. About this Guide

**SILVERCLOUD
SYNC**



1.1 Thank You

First of all, we at LandAirSea Systems want to thank you for purchasing the SilverCloud® Sync Real-Time GPS Tracking System with On-Board Diagnostics. The SilverCloud® Sync incorporates a powerful internal GPS and cellular module capable of transmitting location updates as fast as once every 3 seconds. This features makes it one of the fastest real-time GPS tracking devices on the market today. The web-based SilverCloud® Sync Online mapping software has also been developed to provide a truly user-friendly tracking experience.

This guide has been designed to provide step-by-step instructions on how to successfully install, activate and utilize the SilverCloud® Sync GPS Tracking System.

1.2 Contact Information

LandAirSea Systems, Inc.

2040 Dillard Court

Woodstock, IL 60098

P: 847-462-8100

F: 847-594-6038

www.landairsea.com

support@landairsea.com.

2. Key Features

2.1 Environment

- The SilverCloud® Online mapping software can be used on any PC or Macintosh with a high speed internet connection and an internet browser. The interface is compatible with all web-browsers, including Google Chrome, Safari, Firefox and Internet Explorer.
- Users can also access the SilverCloud® online mapping interface on their smartphones or mobile tablets (iOS and Android) by downloading the SilverCloud® Sync Mobile App from the [iTunes Store](#) or [Google Play Store](#).

2.2 SilverCloud® Sync Data Plan Options

A data plan is required for the SilverCloud® Sync. The data plan charts below list the update speeds and their corresponding prices. For more information, please call 847-462-8100.

Pay As You Go: No Contract

Price	Update Interval
\$39.95/month	10 Second Continuous Updates
\$29.95/month	1 Minute Continuous Updates

****One-time Activation Fee of \$29.95 will be applied***

SilverCloud Prepaid Data Plans

Coverage	1-minute	10-second
6-months (5% savings)	\$170.72	\$227.72
12-months (10% savings)	\$323.46	\$431.46
24-months (15% savings)	\$610.98	\$814.98

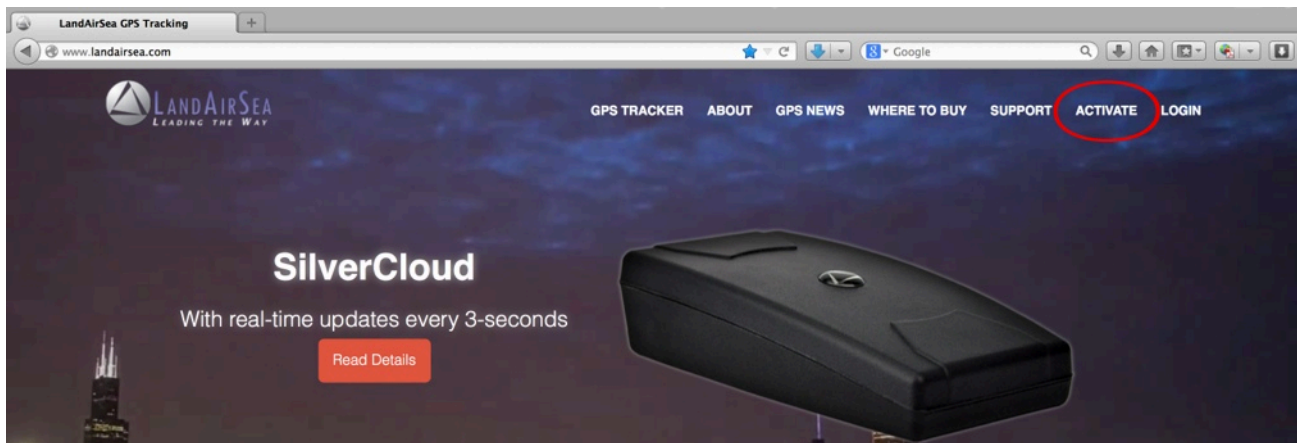
****One-time Activation Fee of \$29.95 will be applied***

2.3 SilverCloud Online Software Features

Mapping Interface	Fast and user-friendly web-browser based application with up to date, simultaneous 2D and 3D mapping capabilities powered by Google Maps
ShareSpot®	Patent-pending features, allows the user to share their GPS location via URL address or embedded code on a website
Geo-Fencing Option	Allows users to create customized zones that can send text messages (SMS) and/or emails notifying the user when the vehicle enters or exits that zone
Traffic Information	Ability to indicate traffic and delays on the map by utilizing existing Google Maps traffic flow interface
Routing Utility	Offers users the ability to send real-time directions to driver's mobile phone via text message (SMS) and/or email
Historical Location Data	Ability to view unlimited real-time GPS tracking and data, with web-based historical playback as well as the ability to generate printable text reports
SilverCloud Alerts	Indicates speed, low-battery, excessive/unnecessary stops, arrival and departure notifications via text message (SMS) and/or email

3. Activating The SilverCloud® Sync

In order to activate your SilverCloud® Sync, please go to www.landairsea.com and click on the online activation link, which is located near the upper right of the home page. This online form needs to be completed in full. Incomplete or missing information may delay the activation process.



The credit card on file will be billed automatically each month. Upon completing the activation form, the user will be charged the \$ 29.95 activation fee and the pro-rated balance of the current monthly service. In addition, the user will be charged for the full upcoming month of service. The next bill will not be due until the next full month. If a device becomes deactivated, a reactivation fee of \$ 29.95 will be charged in order to restart service.

In order to cancel a data plan service, the user must do so in writing. This can be done by email and sent to: activations@landairsea.com.

Cancellations must be received prior to the close of the last business day of the month to avoid the next billing cycle. LandAirSea Systems is not open on weekends, and so, cancellations must be performed before the last business day of the month. For questions about activation, please call 847-462-8100.

To retrieve a lost password, add, delete or change a password(s) for an account, please contact activations@landairsea.com or call 847-462-8100. The user will be required to provide their address on file, as well as the serial number, which is located on the bottom of the device.



4. Installing the SilverCloud® Sync

4.1 Installing the SilverCloud® Sync System

Users will need to *activate* (Section 3) their SilverCloud® Sync unit(s) first before starting the system. Users will also need to install the Google Earth® plugin on their computer (PC and/or Mac). The Google Earth plugin will allow users to access the functionalities of Google Earth without having to install the full application. To download and install the plugin, go to: www.earth.google.com/plugin.

After activating the SilverCloud® Sync unit(s), take the device and plug it into the vehicle's OBD-II Port, which is usually located under the driver's side dash or steering column/instrument cluster (refer to the vehicle's owner's manual or go to the follow website: <http://www.canobd2.com/TechInfo/DlcLocator.aspx>).

The On-Board Diagnostic (OBD-II) specification has been a standard of all vehicles sold in the United States since 1996. The OBD-II port was designed to help technicians diagnose and troubleshoot a vehicle's malfunctions. a standard place it outdoors.

The SilverCloud® Sync receives power through the OBD port - no batteries or hardwiring necessary. This allows for uninterrupted GPS tracking whenever the SilverCloud® Sync is connected to the vehicle's OBD-II port.



16 Pin OBD-II Connector
With SilverCloud Sync





NOTE: The micro USB (2.0) connector is intended for troubleshooting and **cannot** be used to charge the device.

NOTE: The SilverCloud® Sync is NOT waterproof or water resistant device. Please ensure that the device is kept free from excessive dust and moisture.

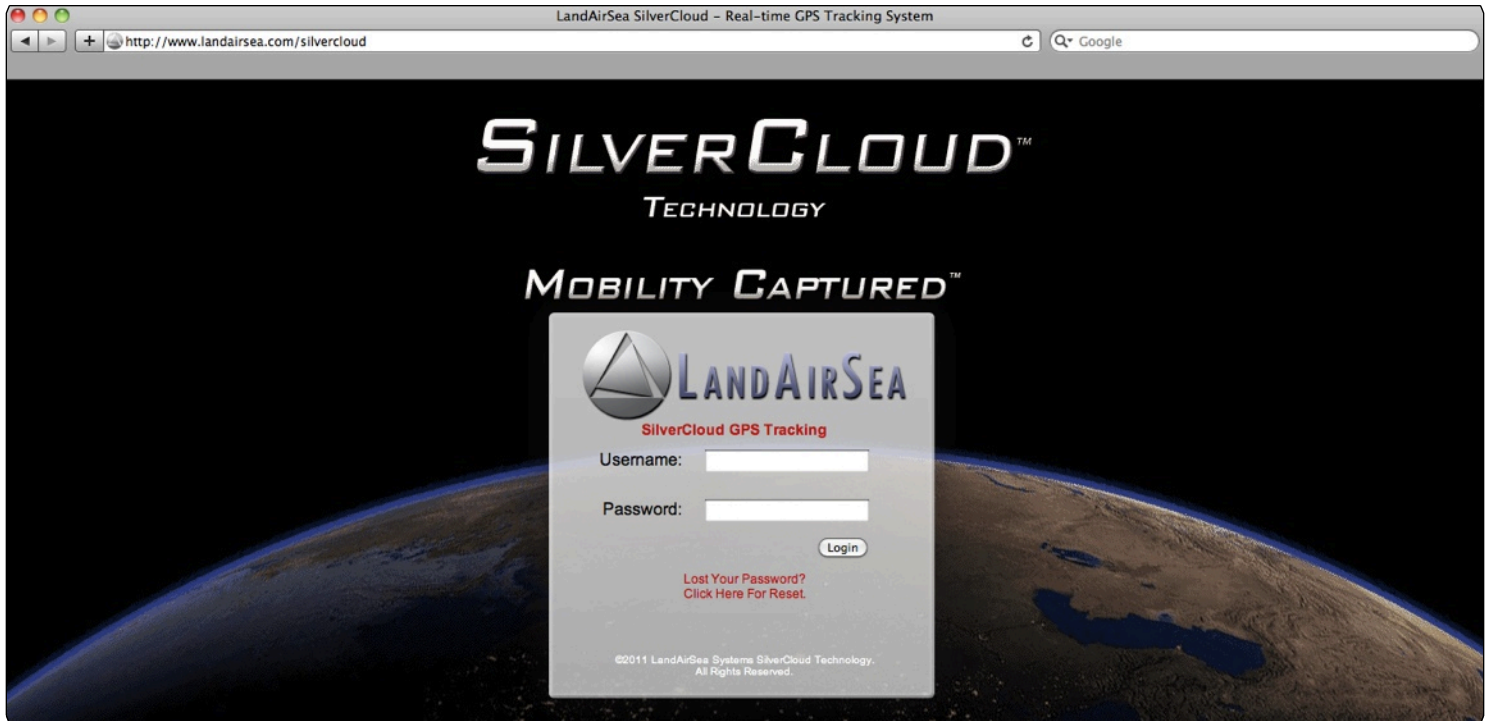
LED Indicator Lamps			
Condition	Red LED OBD	Green LED GSM	Blue LED GPS
Initial Power Cycle	Fast Blink		
Power/Protocol Discovered	Slow Blink		
Searching for Cell Signal		Fast Blink	
Signal Found Transmitting		Slow Blink	
Acquiring Satellite Signal			Fast Blink
Satellite Signal Acquired			Solid

4.2 Starting the System

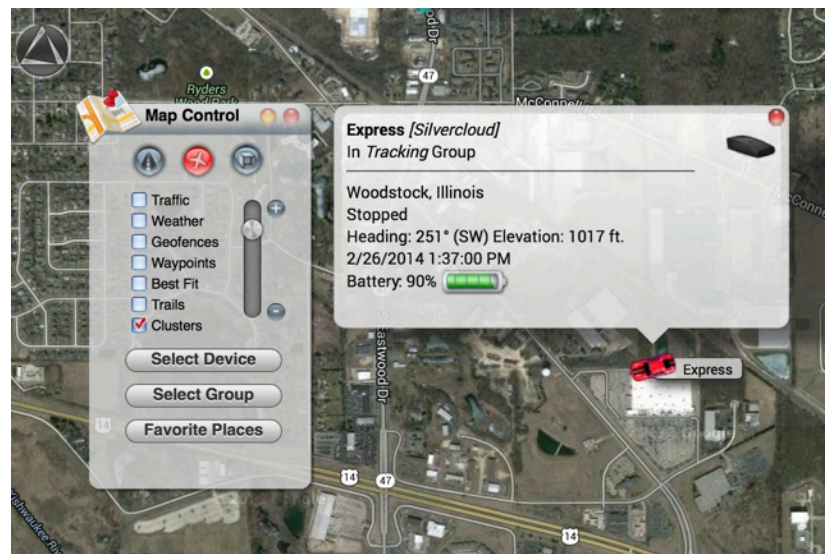
After the activating and installing the device, users will be able to track and monitor their vehicles from their desired computer, smartphone or mobile tablet with high-speed internet access with their preferred internet browser (Google Chrome or Safari is recommended).

To access the online system, open the browser to the following website:

<http://www.landairsea.com/silvercloud>



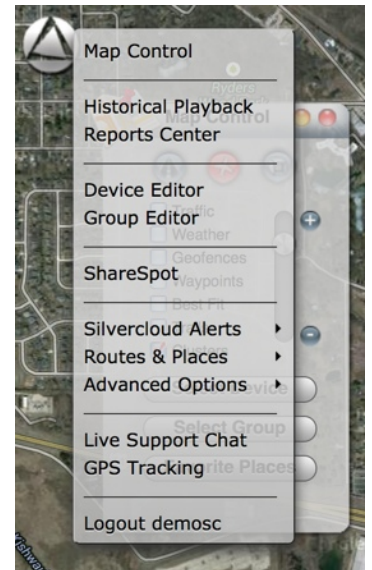
Once the SilverCloud® home page loads, users will need to type in their *username* and *password*. After logging in, the online mapping interface will load, and the user will be able to click the vehicle icon that appears on the screen to display the vehicle's real-time location, speed, heading, date and time and battery strength. (see screenshot to the right)



4.3 Logging Out of the System

To log out of the online mapping system, click on the LandAirSea logo located on the top left corner of the page to access the main menu. Once the main menu appears, select “Logout” located at the bottom of the menu.

Once the user is logged out, the browser will automatically load to LandAirSea’s home page (www.landairsea.com).



4.4 Live Support Chat

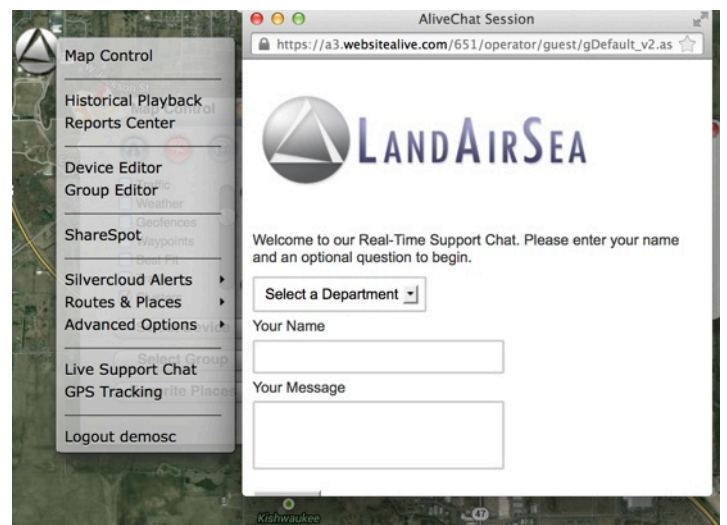
SilverCloud users will also be able to chat live with a support representative by clicking Live Support Chat feature located in the Main Menu.

Choose the Live Support Chat option and the AliveChat Session window will open. Choose Tech Support or Sales, enter your name and question and click Submit. You will be connected to a Live Support Agent.

LandAirSea also offers 24/7 technical support by phone by calling 847-462-8100 or via email at support@landairsea.com.

Tech Support Page:

<http://www.landairsea.com/contact/support.php>



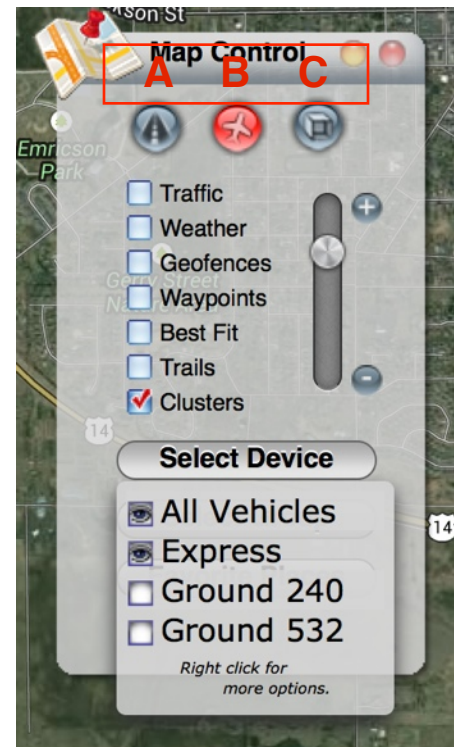
5. Step-By-Step Instructions

5.1 The SilverCloud® Sync Control Panel

Once the SilverCloud online mapping interface loads, the Control Panel will automatically appear on the upper left corner of the screen.

From the Control Panel, users will be able to:

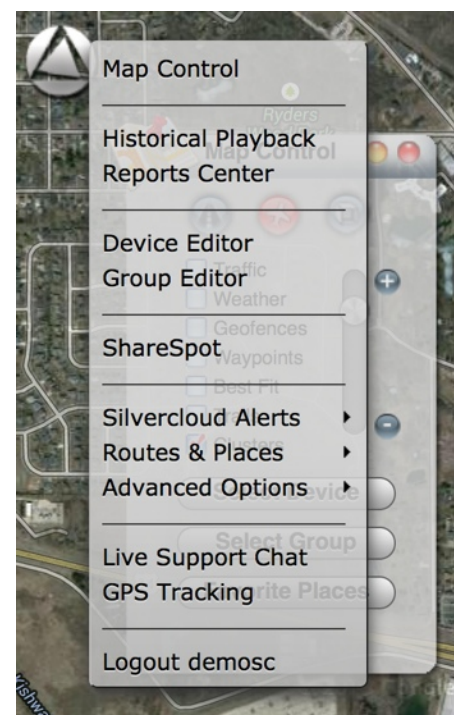
- Select preferred view:
 - A. Displays Road Map
 - B. Displays Aerial View
 - C. Displays 3-D View
- Select which vehicle(s) they want to view on the map or select multiple vehicles based created groups (creating groups covered in next section).
- Display regional traffic, view predetermined virtual zones (“geofences”), navigational waypoints, adjust best fit for multiple vehicles, and view vapor trails as the vehicle moves along the map.
- Zoom in (+) and out (-) by dragging the button up and down.



5.2 The SilverCloud® Sync Main Menu

The SilverCloud Main Menu can be accessed by clicking on the LandAirSea icon located on the upper left corner of the screen. From the screen users will be able to:

- Generate Historical Playback and printable Reports.
- Edit and label icons for individual vehicles.
- Specify and label Groups for multiple vehicles.
- Set Speed, Battery, Proximity and Geofence Alerts.
- Determine and send best Routes/Directions.
- Manage Advanced user settings, including ShareSpot®.




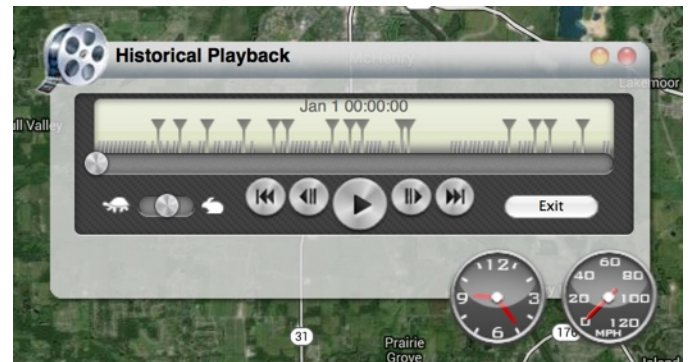
5.3 The SilverCloud® Sync Main Menu Selections

This section will help users navigate through the individual selections found on the Main Menu.

5.3.1 Historical Playback

To view Historical Data:

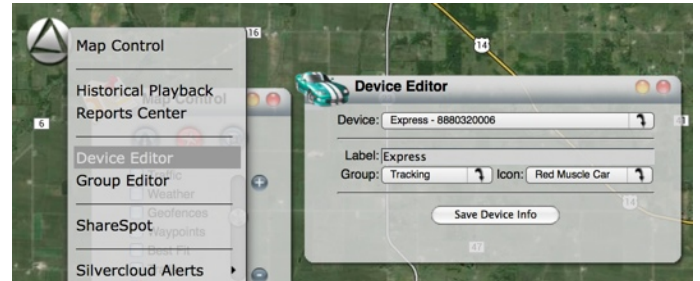
1. Select *Historical Playback* from the Main Menu.
2. Select a vehicle from the drop down menu if you are viewing multiple vehicles.
3. Choose the *Selected Timeframe* that you want to view to specify a desired timeframe.
4. Select *3D Tour* to view the playback in a 3D viewing window.
5. Select *Positions* to view all tracking data points in the historical report.
6. Select *Loop* to view playback in a continuous loop.
7. After the fields have all been set, click *Generate Playback*.
8. At this point Google Earth® may request to install a plug in if it has not already been done. Allow the plug in to be downloaded and installed (this will not harm the computer).
9. The Playback Control will display on the page along with an onscreen display of the path of the route traveled by the vehicle during the Start and End date time frame selected on the calendar.
 - a. Play Button: Starts Playback.
 - b. Pause Button: Pauses Playback.
 - c. Toggle the  to adjust the speed of the playback
 - d. |<< / >>| Buttons: Jump Playback Forwards or Backwards.
 - e. The Exit Tour Button: Closes the Playback control screen.
 - f. Clock and speedometer display time and speed will be in conjunction with the tour after Play is selected.



5.3.2 Device Editor

From the Device Editor window users will be able to create a name label and choose an icon for their vehicle(s), as well as set speed and low battery alarm notifications, which can be sent to an email address and/or cell phone via text message (SMS).

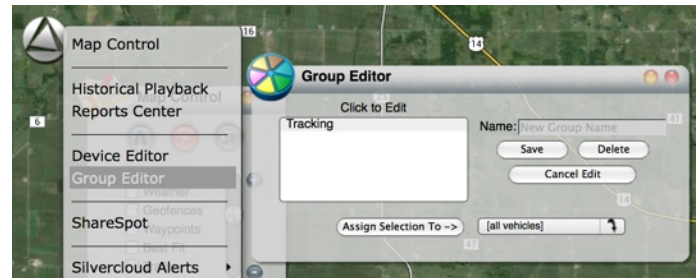
1. To **edit device name**, choose the vehicle from the *Device* dropdown menu.
2. Designate a name for vehicle(s) in the *Label* field. If a group has been created, choose that group in the group field.
3. Users will also be able to apply an *Icon* to the vehicle in the Icon field.
4. Choose *Save Device Info* and the changes will display when you click the vehicle icon.



5.3.3 Group Editor

Creating groups can be useful when needing to view multiple vehicles, but not necessarily all vehicles.

1. To create a new group, type the name of the group in the *Name* field.
2. Then choose the vehicle which you would like assigned to the new group from the *[all vehicles]* dropdown menu.
3. Choose *Save* and a new group will be created with the vehicle within that group.

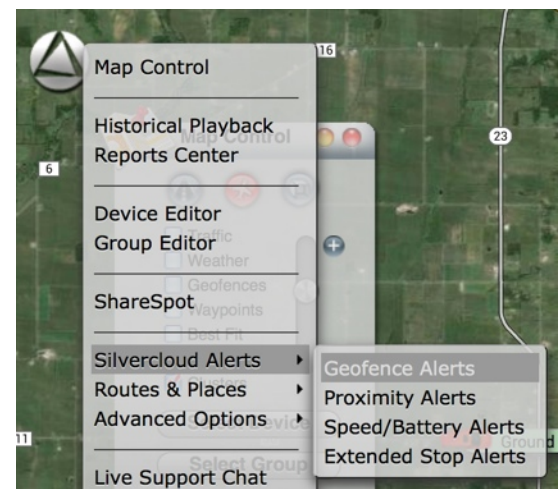


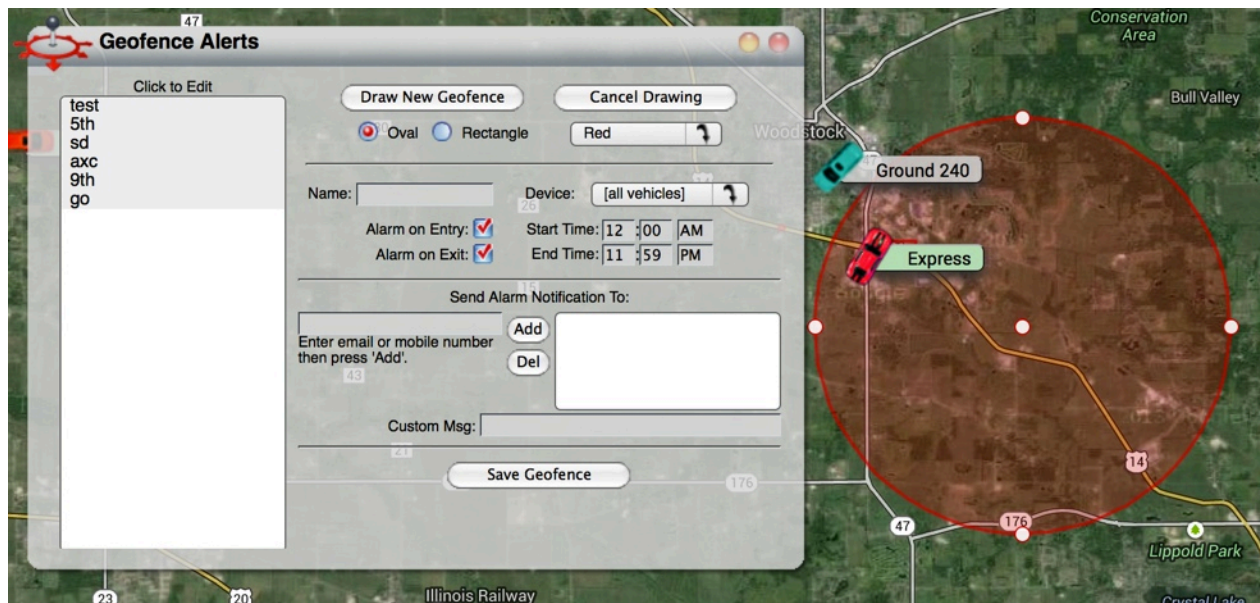
5.3.4 Setting Geo-Fence Alerts

A *geo-fence* is a virtual boundary, or zone, created around a physical geographical space. The SilverCloud's online mapping interface has the Geo-Fence Alerts feature, which allows the user to send email and/or text message (SMS) notifications whenever a vehicle either enters or exits a designated area.

To create a Geo-Fence Alert:

1. Select *SilverCloud Alerts* from the Main Menu, and then select the *Geofence Alerts* option.
2. Once the Geofence Alerts window opens, click on the *Draw New Region* button.





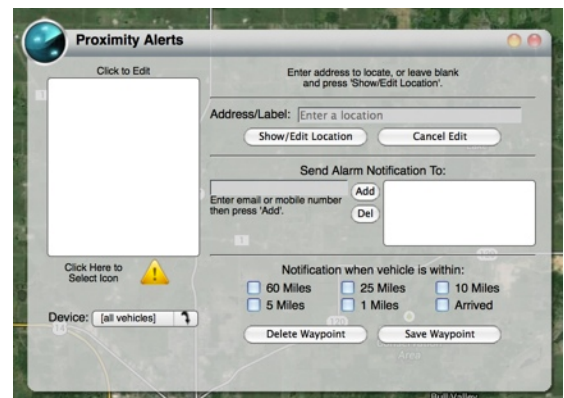
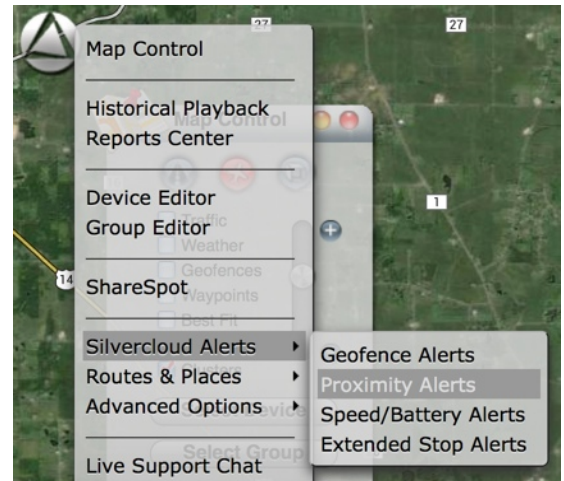
3. Choose whether the region is to be defined by an *Oval* or *Rectangle*, and then designate a desired color (red, yellow, blue, green, etc.).
4. Give the region a name by inserting the chosen name in the *Name* field.
5. Specify which unit or vehicle to designate for the alerts from the *Device* dropdown menu.
6. Define the time span for which the notifications will be sent in *Start Time* and *End Time*.
7. Choose *Alarm on Entry* or *Alarm on Exit* from the region or both by checking the corresponding box next to those fields.
8. Enter the email address and/or cell phone number to which notifications will be sent.
9. Enter a message to be sent to the recipient you want to display in *Custom Msg* field.
10. Click and drag the geofence (oval or rectangle) to the desired position on the map.
11. Click and drag to adjust the size of the geofence.
12. Once the geofence has been designated and the user is satisfied with the location and size of the alert, click on the *Save Alarm Region* button.
13. Users will now be able to receive notifications either through email or cell phone or both.
14. If users would like to make changes to the email or phone notifications, or move or resize the Alarm Region, reopen the *Geofence Alerts* screen from the Main Menu and click the named region in the upper left hand window. Make any changes necessary and choose *Save Alarm Region*.

5.3.5 Setting Proximity Alerts

Users will be able to set up *Proximity Alerts*, which will automatically send an email and/or text message (SMS) notification when a vehicle approaches a designated street address.

To create a *Proximity Alert*:

1. Select *SilverCloud Alerts* from the *Main Menu*, and then select the *Proximity Alerts* option, which will open a Alerts window.
2. Select a vehicle from the *Device* field.
3. Enter the desired street address to apply to the Proximity Alert or click the *Show/Edit Location* button to enter address information.
4. Enter an email address and/or text message number. Users can add more than one email address and/or cell phone number.
5. Set the distance for when the alert is to be triggered by checking the appropriate boxes (60 Miles, 25 Miles, 10 Miles, Arrived, etc.).
6. Once the Proximity Alert has been set click on the *Save Alert* button located at the bottom.
7. If users would like to make changes to the alerts, reopen the *Proximity Alerts* screen from the Main Menu and click the named region in the upper left hand window. Make any changes necessary and choose *Save Alert*.

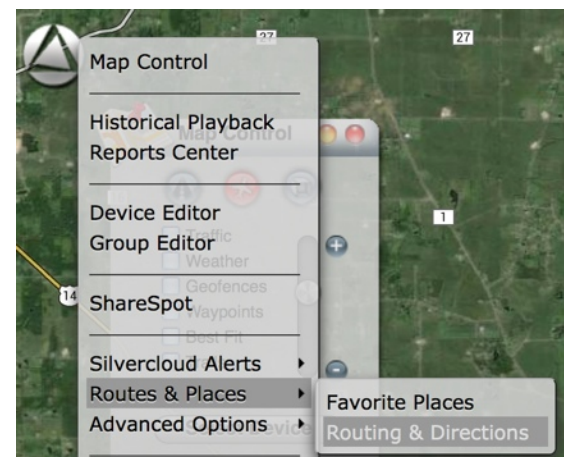


5.3.6 Routing Utility

With the Routing Utility, users will be able to create routing directions from a vehicle to an address, from an address to an address, or from vehicle to vehicle (multiple devices).

To generate a Route:

1. Select *Routing/Directions* from the *Main Menu*, and then select the *Basic Routing Utility* option, which will open the Routing window.

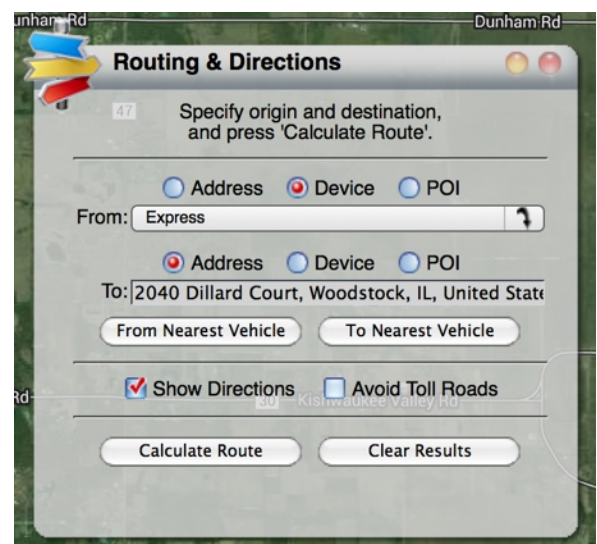




2. Select the *From an Address* box to route from an address or *From a Vehicle* box to route directions from a vehicle. If routing from an address, type in the desired address in the field, or select a desired vehicle from the dropdown menu.
3. Afterwards, select the *To an Address* box to route from an address or *To a Vehicle* box to route directions from a vehicle. If routing to an address, type in the desired address in the field, or select a desired vehicle from the dropdown menu.
4. Users will have the option to select the *Show Directions* box or *Avoid Toll Roads* box.
5. Once the fields have been designated and set, click on the *Calculate Route* button, which will open another window with directions. Users will have the option to send the routing directions to an email or a cell phone number.

5.3.7 Nearest Vehicle Routing Utility

The *Nearest Vehicle Routing Utility* screen is the same as the *Routing Utility* screen with one exception. If users are tracking multiple vehicles, they can enter an address and then choose *Find Nearest Vehicle*. The screen will return the name of the nearest vehicle on the screen and display its distance from the address point.

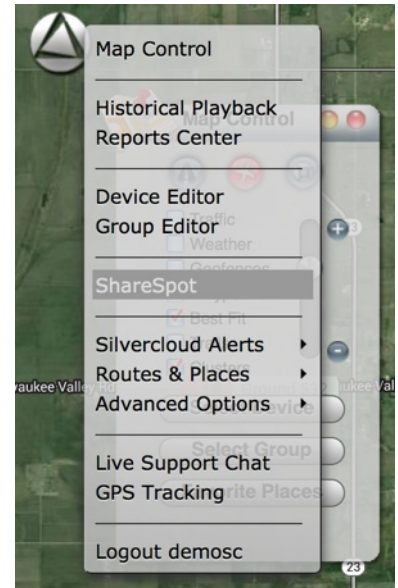


5.4 SilverCloud® Sync ShareSpot® Feature

The patent-pending ShareSpot® is one of the innovative features offered by LandAirSea's real-time GPS tracking systems. With the ShareSpot®, users of the SilverCloud and SilverCloud Sync will be able to share their precise GPS location online in real-time. The shared online mapping window not only shows where the vehicle is, it also shows where it's going and how fast it's traveling. This allows the public to conveniently identify where the vehicle is at any time on a web-browser without having to contact the user directly.

To utilize *ShareSpot®*:

1. Select *Advanced Options* from the *Main Menu*, and then select the *ShareSpot®* option, which will open a new window.
2. Once the ShareSpot® window opens, owners of the SilverCloud or SilverCloud Sync tracking systems will be able to share the real-time GPS location by sending a URL link via email, or by copying the automatically generated HTML code and embedding it onto a website or Facebook page.



Copy and paste site link for shared viewing.

Copy HTML code onto your website, blog or Facebook page to create a tracking window on a business or personal site for shared viewing.

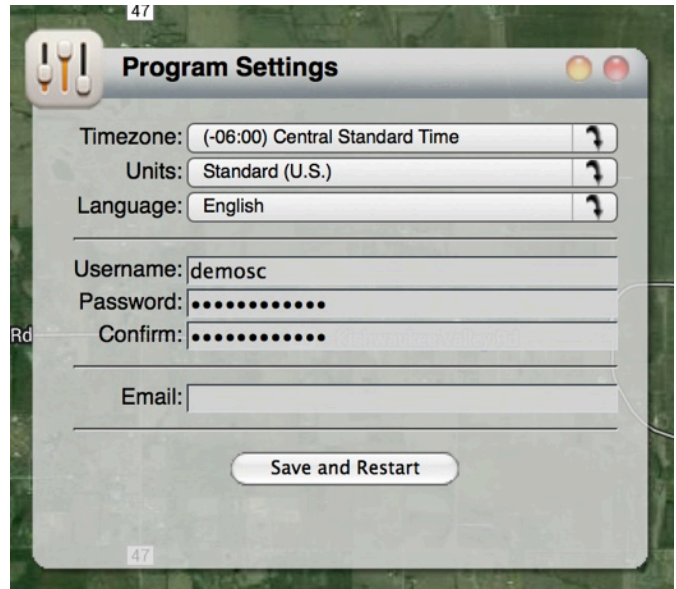
Once embedded onto the website, the online mapping window automatically refreshes the GPS location, with continuous updates as fast as every 3 seconds based on the data plan and device chosen. Owners will also be able to share their GPS tracking data without having to compromise their username and password.

5.5 Program Settings

The SilverCloud online interface also offers the user complete account control. The *Program Settings* management screen allows users to change their password when necessary for added security. In this section, users will also have the ability change their email address and set the desired timezone.

*****Sub Account: For Security Reasons, Sub Accounts have been disabled. If users would like to enable Sub Account options, please contact LandAirSea.*

Sub-accounts give users a way to manage permissions, create specific passwords for devices, and share public views.



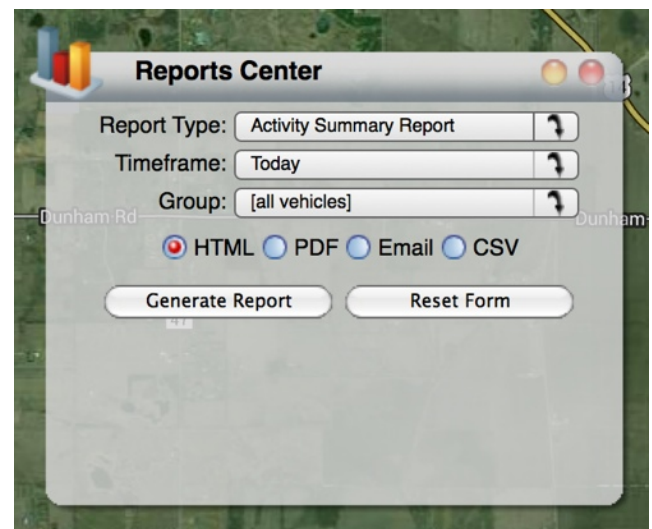
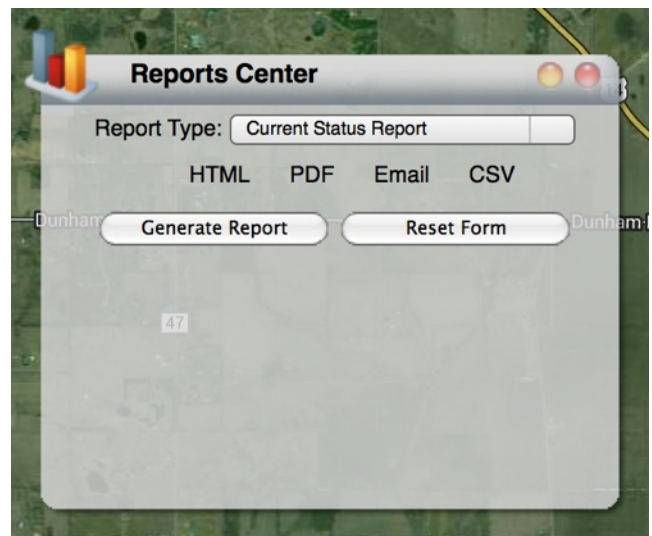
6. Reports

6.1 Generating Reports

From the *Reports Screen*, the user will have the ability to generate a number of detailed historical reports, which can then be viewed in a browser or Adobe PDF format. The reports can then be printed out for offline viewing or for filing/accounting purposes.

To generate a *Report*:

1. Select *Report Center* from the *Main Menu*, which will then open a new window.
2. Select the *Create HTML* box to view the report from a web browser.
3. Select the *Create PDF* box to generate a file that can viewed with Adobe Reader. Users will need to download and install Adobe Reader if it is not already a program on your computer. Adobe Reader can be downloaded by click on this link: <http://get.adobe.com/reader/>
4. Once the method of reporting has been determined, select the *Report Type* from the dropdown menu located at the top of the Report Center window.
5. Click the *Generate Report* button.



6.2 Report Types

6.2.1 Current Status Report

The *Current Status Report* displays the most current status of the vehicle(s), including battery life, speed, last reported data point and last reported location.

6.2.2 Activity Summary Report

The *Activity Summary Report* is a quick view of total daily mileage, travel time (runtime) and stops for the selected time period. Data is displayed on a Graph and on a Spreadsheet.

6.2.3 Excessive Speed Report

Set the maximum acceptable speed for a vehicle and each instance that the vehicle exceeds the maximum speed for the selected time period will be displayed in the *Excessive Speed Report*.

6.2.4 Complete Activity by Device Report

The *Complete Activity by Device Report* displays a graphical and spreadsheet of the time and speed for all positions reported for a selected time period. For each position reported to the server, the spreadsheet below the graph will display date/time, speed, heading and location. Alerts and Alarm notifications are also noted in the report. The street address in the location column is displayed as an active hyperlink street address which, when clicked, will open that location in Google Maps.

History Report for Express from 2/23/2014 to 3/2/2014

Date/Time	Description	MPH	Hdg	Elev.	Location	Coordinates
2/24/2014 4:41:02 PM	Position	11	333 (NW)	991 ft.	2043 Duncan Pl, Woodstock, IL	(42.298319,-88.415257)
2/24/2014 4:41:02 PM	Express has exited region, "sd" @ Feb 24 2014 4:41PM	11	333 (NW)	0 ft.	2043 Duncan Pl, Woodstock, IL	(42.298319,-88.415257)
2/24/2014 4:41:14 PM	Position	2	104 (E)	1007 ft.	2039 Duncan Pl, Woodstock, IL	(42.298348,-88.415513)
2/24/2014 4:41:19 PM	Position	2	40 (NE)	1001 ft.	2039 Duncan Pl, Woodstock, IL	(42.298383,-88.415469)
2/24/2014 4:41:21 PM	Position	0	40 (NE)	997 ft.	2035 Duncan Pl, Woodstock, IL	(42.298392,-88.415474)
2/24/2014 4:43:34 PM	Position	5	137 (SE)	1004 ft.	2039 Duncan Pl, Woodstock, IL	(42.298334,-88.415471)
2/24/2014 4:43:39 PM	Position	9	48 (NE)	994 ft.	2035 Duncan Pl, Woodstock, IL	(42.298396,-88.415274)
2/24/2014 4:43:44 PM	Position	16	359 (N)	994 ft.	2018 Duncan Pl, Woodstock, IL	(42.29863,-88.415243)
2/24/2014 4:43:49 PM	Position	26	0 (N)	988 ft.	1984 Duncan Pl, Woodstock, IL	(42.299096,-88.415222)
2/24/2014 4:43:54 PM	Position	25	349 (N)	981 ft.	1948 Duncan Pl, Woodstock, IL	(42.299625,-88.415249)
2/24/2014 4:43:59 PM	Position	26	320 (NW)	981 ft.	1910 Duncan Pl, Woodstock, IL	(42.30006,-88.415618)
2/24/2014 4:44:04 PM	Position	27	357 (N)	984 ft.	1708 Duncan Pl, Woodstock, IL	(42.300552,-88.415844)
2/24/2014 4:44:09 PM	Position	31	359 (N)	978 ft.	1426 Duncan Pl, Woodstock, IL	(42.301174,-88.41585)
2/24/2014 4:44:14 PM	Position	29	1 (N)	984 ft.	1142 Duncan Pl, Woodstock, IL	(42.301814,-88.415831)
2/24/2014 4:44:19 PM	Position	6	8 (N)	994 ft.	11198 McConnell Rd, Woodstock, IL	(42.302141,-88.415804)
2/24/2014 4:44:24 PM	Position	21	298 (NW)	1014 ft.	11216 McConnell Rd, Woodstock, IL	(42.302331,-88.416041)

6.2.5 Stops and Mileage Report

The *Stops and Mileage Report* is displayed in a spreadsheet format with Date/Time, Stop Description, Distance and Location columns.

- **Description** column displays the length of the stop.
- **Distance** column displays the distance traveled to the current stop from the last stop.
- **Location** displays a hyperlink street address that corresponds to latitude and longitude point. The location can be viewed in Google Maps by clicking the address.

Stops/Mileage Report for 2/26/2014 to 2/27/2014							Stops by Length (Minutes)				
Device Name	Begin Stop Date/Time	End Stop Date/Time	Description	Distance	Location		<15'	>15'	>30'	>60'	>120'
Express	2/26/2014 9:24:02 AM	-----	First Known Position Within Timeframe	-----	[Cary] McHenry County, Illinois		✓				
Express	2/26/2014 9:57:11 AM	2/26/2014 9:59:07 AM	Stopped for 1min 56sec	13.480 Miles	2699 Bridge Lane, Woodstock, IL		✓				
Express	2/26/2014 10:08:41 AM	2/26/2014 10:13:36 AM	Stopped for 4min 55sec	1.466 Miles	3707 Doty Road, Woodstock, IL		✓				
Express	2/26/2014 10:22:30 AM	2/26/2014 10:27:05 AM	Stopped for 4min 35sec	1.546 Miles	1552-1598 Rolling Hills Drive, Woodstock, IL		✓				
Express	2/26/2014 10:41:49 AM	2/26/2014 10:46:20 AM	Stopped for 4min 31sec	3.223 Miles	1375 South Eastwood Drive, Woodstock, IL		✓				
Express	2/26/2014 10:57:07 AM	2/26/2014 11:01:33 AM	Stopped for 4min 26sec	0.812 Miles	2145 South Eastwood Drive, Woodstock, IL		✓				
Express	2/26/2014 11:04:08 AM	2/26/2014 11:07:00 AM	Stopped for 2min 52sec	0.672 Miles	2023-2049 Willow Brooke Drive, Woodstock, IL		✓				
Express	2/26/2014 11:27:27 AM	2/26/2014 11:32:08 AM	Stopped for 4min 41sec	5.200 Miles	Tartan Drive, Crystal Lake, IL		✓				
Express	2/26/2014 11:36:31 AM	2/26/2014 11:39:23 AM	Stopped for 2min 52sec	1.073 Miles	8772-8850 Ridgefield Road, Crystal Lake, IL		✓				
Express	2/26/2014 11:43:10 AM	2/26/2014 11:45:50 AM	Stopped for 2min 40sec	1.590 Miles	7910 U.S. 14, Crystal Lake, IL		✓				
Express	2/26/2014 12:03:16 PM	2/26/2014 12:04:06 PM	Stopped for 50sec	7.045 Miles	1859-2009 South Eastwood Drive, Woodstock, IL		✓				
Express	2/26/2014 12:06:58 PM	2/26/2014 12:29:29 PM	Stopped for 22min 31sec	0.048 Miles	1640 South Eastwood Drive, Woodstock, IL			✓			
Express	2/26/2014 12:59:32 PM	2/26/2014 1:04:43 PM	Stopped for 5min 11sec	7.683 Miles	315 North Madison Street, Woodstock, IL		✓				
Express	2/26/2014 1:12:38 PM	2/26/2014 1:18:20 PM	Stopped for 5min 42sec	2.537 Miles	2100 Lake Avenue, Woodstock, IL		✓				
Express	2/26/2014 1:20:35 PM	2/26/2014 1:32:47 PM	Stopped for 12min 12sec	0.516 Miles	1760 Kilkenney Court, Woodstock, IL		✓				
Express	2/26/2014 1:37:00 PM	2/26/2014 1:48:50 PM	Stopped for 11min 50sec	0.186 Miles	1275 Lake Avenue, Woodstock, IL		✓				
Express	2/26/2014 2:13:10 PM	2/26/2014 2:19:14 PM	Stopped for 6min 4sec	5.919 Miles	1240 Cobblestone Way, Woodstock, IL		✓				
Total Distance: 57.530 Miles											

6.2.6 Mileage by State Report

The *Mileage by State Report* is displayed in a spreadsheet format with Date/Time, Description, Runtime and State Location columns.

6.1.2.5 Alarms by Device Report

If the user has already set up a SilverCloud alert, the number of alerts for the selected time period will be displayed in the *Alarms by Device Report*.

7. Geolocation - How addresses are defined

Addresses for any GPS device are derived from a process called Reverse Geocoding. The device tracks a latitude and longitude geographic location and then derives an address based upon a database of addresses compiled by the government. The geographical coordinate is then mapped to the nearest known address. The **nearest known** address is an important concept here. Obviously it is virtually impossible to accurately pinpoint each latitude and longitude on the face of the earth so addresses may be off by a house or two, or may be an estimation of the address. Addresses are determined by lot numbers from the US census, so the returned address is only good as the database from which it is derived. This is true for every GPS device on the market today. All GPS devices use this same process. So...the device may be working properly and tracking all of the right locations, but the addresses might be off by a few numbers.

Our accuracy claims are based on geographic location on the earth, meaning the universal latitude and longitude coordinates. Most people, however, are accustomed to travel using a numbers-and-names address system. For that reason, *all* GPS devices on the market today utilize a process of converting latitude and longitude parameters to best known and available address.

Addresses are derived from a U.S. government database, based on census reports. The database is the best information available, but it is not perfect. The numbers can be off by a house or two, or the address might be an estimate, based on the data that is available.

Based purely on latitude and longitude pairings, LandAirSea Systems GPS tracking devices are among the most accurate you can buy.

8. Specifications

SilverCloud® Sync Specifications	
Dimensions	1.8" W x 2.18" L x 1.08" H
Operating Temperature	-30°C to +75°C (-22°F to +158°F)
Power Source	9 - 16 Volts DC (powered by the vehicle's OBD-II port)
Typical Full-Power Current	70mA at 12 Volts DC
GSM Channels	850/1900 (U.S.) 900/1800 (Europe, Australia, Asia, Middle East)
Communication Protocol	SMS, GPRS (UDP)
Update Frequency	5 minute, 1 minute, 10 second and 5 second
Historical Playback	Unlimited historical playback stored at LandAirSea's server
Reporting	Individual and enhanced vehicle report, start/stop, mileage and more
Diagnostics	Blinking LED, SMS or TCP diagnostic messages
Notifications	Virtual geo-boundaries and speed and battery alerts via SMS text message or e-mail.