

dji OSMO MOBILE 8

Quick Start Guide

快速入门指南

v1.0

Instrukcja obsługi



<https://s.dji.com/guide116>



Contact
DJI SUPPORT



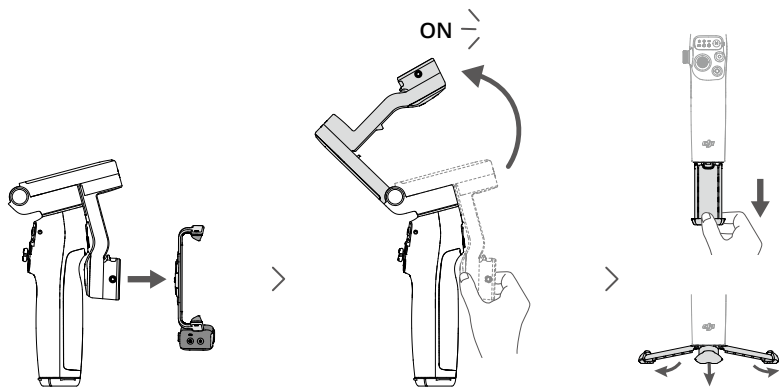
微信扫一扫
获取技术支持

DJI is a trademark of DJI.
OSMO is a trademark of DJI OSMO.
Copyright © 2025 DJI All Rights Reserved.

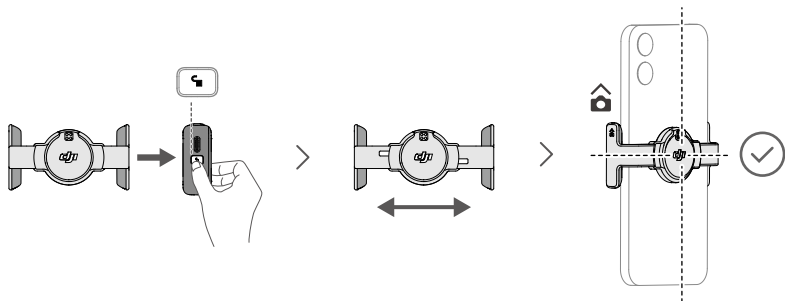


YCBZSS00343103

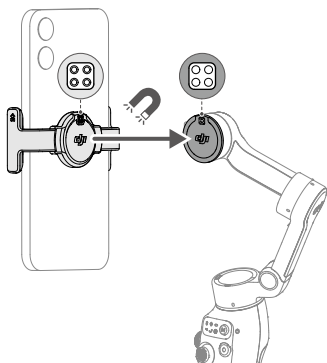
1



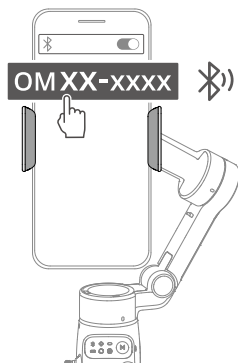
2



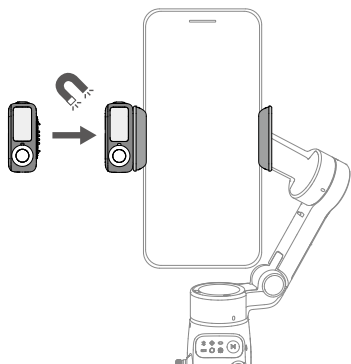
3



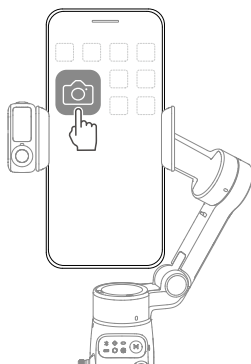
>



4



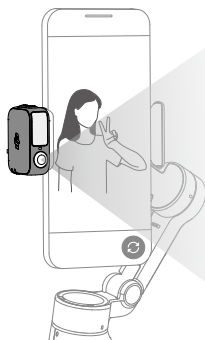
>



5



<https://s.dji.com/guide99>



3s

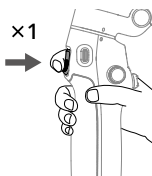


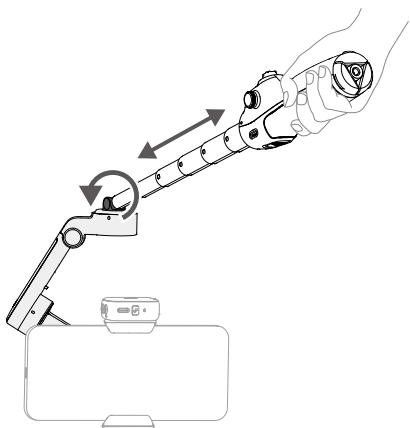
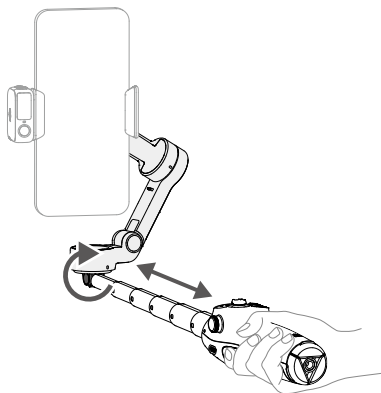
ON/OFF

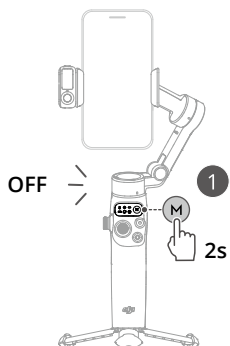
1s



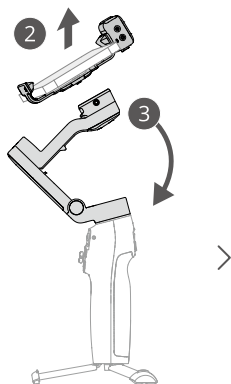
OR



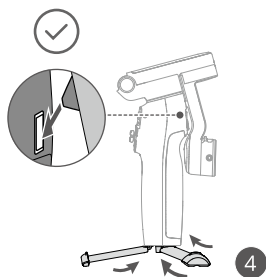




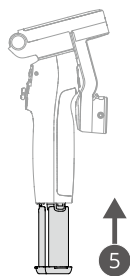
>

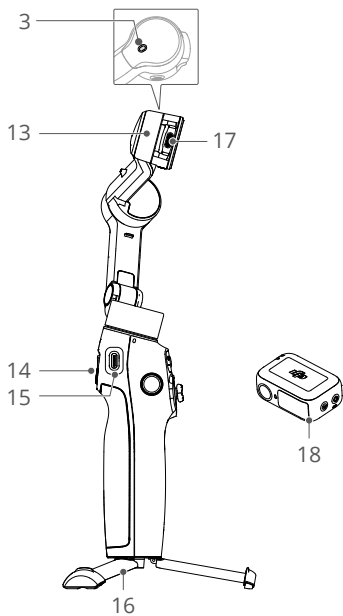
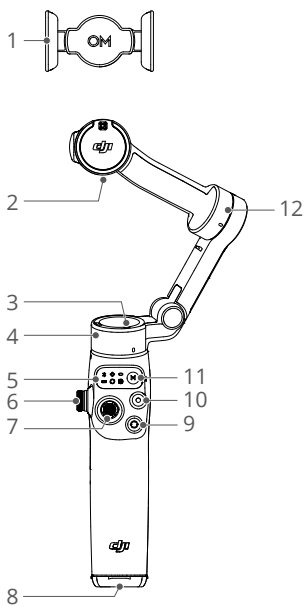
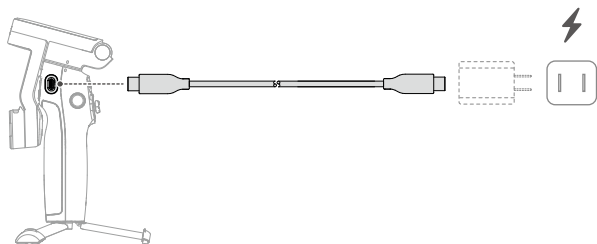


>



>





EN

1. Magnetic Phone Clamp
2. Counterweight Mounting Hole
3. Function Status Indicator
4. Pan Motor
5. Status Panel
6. Side Wheel
7. Joystick
8. 1/4"-20 UNC Port
9. Switch Button
10. Shutter/Record Button
11. Power/M Button
12. Tilt Motor
13. Roll Motor
14. Trigger
15. Charging Port (USB-C)
16. Built-in Tripod
17. Output Port (USB-C)
18. DJI OM Multifunctional Module

CHS

1. 磁吸手机夹
2. 配重块安装螺纹孔
3. 功能状态指示灯
4. 平移轴电机
5. 状态显示面板
6. 侧面拨轮
7. 摇杆
8. 1/4"-20 UNC 螺纹孔
9. 切换按键
10. 拍摄按键
11. 电源 / M 按键
12. 俯仰轴电机
13. 横滚轴电机
14. 扳机按键
15. 充电接口 (USB-C)
16. 内置三脚架
17. 输出接口 (USB-C)
18. DJI OM 多功能追踪模块

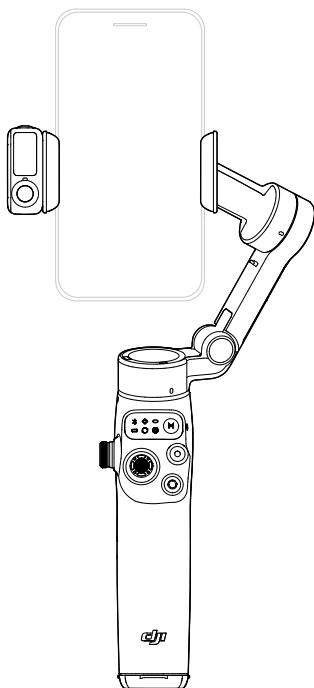
PL

1. Magnetyczny zacisk na telefon
2. Otwór montażowy przeciwwagi
3. Wskaźnik stanu funkcji
4. Silnik panoramowania
5. Panel stanu
6. Koło boczne
7. Manipulator
8. Port 1/4"-20 UNC
9. Przycisk przełączający
10. Przycisk Migawka/Nagrywanie
11. Przycisk zasilania/M
12. Silnik pochylenia
13. Silnik przechylenia
14. Spust
15. Port ładowania (USB-C)
16. Wbudowany Statyw
17. Port wyjściowy (USB-C)
18. Moduł wielofunkcyjny DJI OM

dji OSMO MOBILE 8

User Manual

v1.0 2025.11





This document is copyrighted by DJI with all rights reserved. Unless otherwise authorized by DJI, you are not eligible to use or allow others to use the document or any part of the document by reproducing, transferring or selling the document. Only refer to this document and the content thereof as instructions to operate DJI products. The document should not be used for other purposes.

In the event of divergence among different versions, the English version shall prevail.

Searching for Keywords

Search for keywords such as “battery” and “install” to find a topic. If you are using Adobe Acrobat Reader to read this document, press Ctrl+F on Windows or Command+F on Mac to begin a search.

Navigating to a Topic

View a complete list of topics in the table of contents. Click on a topic to navigate to that section.

Printing this Document

This document supports high resolution printing.

Using this Manual

Legend

⚠ Important

💡 Hints and Tips

📖 Reference

Read Before Use

DJI™ provides you with tutorial videos and the following documents:

1. *Safety Guidelines*
2. *Quick Start Guide*
3. *User Manual*

It is recommended to watch all the tutorial videos and read the *Safety Guidelines* before using for the first time. Make sure to review the *Quick Start Guide* before using for the first time and refer to this *User Manual* for more information.

Video Tutorials

Go to the address below or scan the QR code to watch the tutorial videos, which demonstrate how to use the product safely:



<https://www.dji.com/osmo-mobile-8/video>

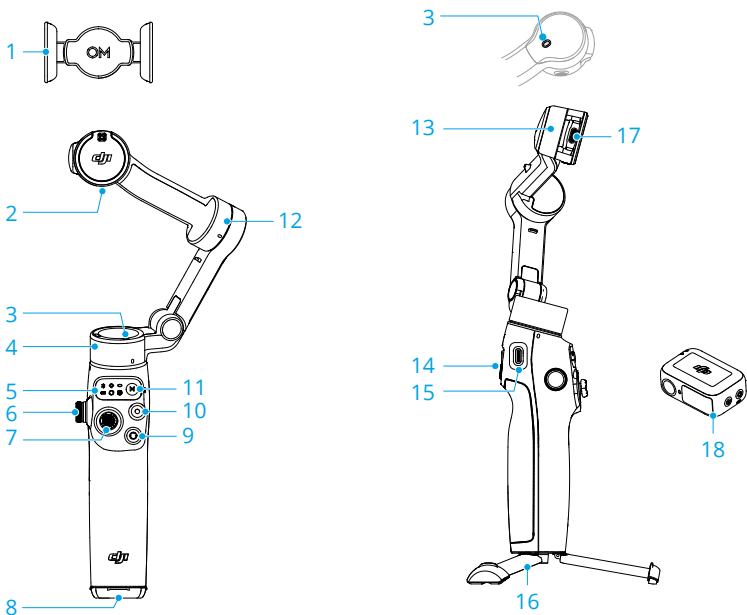
Contents

Using this Manual	3
Legend	3
Read Before Use	3
Video Tutorials	3
1 Product Profile	6
1.1 Osmo Mobile 8	6
1.2 Multifunctional Module	7
2 Using for the First Time	8
2.1 Charging	8
2.2 Unfolding	8
2.3 Attaching the Phone	9
2.4 Connecting to the DJI Mimo App	10
2.5 Firmware Update	11
3 Basic Features	12
3.1 Buttons and Ports	12
3.2 Indicators	14
3.3 Grip Gestures	16
3.4 Follow Modes	18
3.5 Automatic Pan and Roll	19
3.6 Phone Charging	20
3.7 Storage	21
4 Advanced Features	22
4.1 Multifunctional Module	22
Installing and Removing	22
Tracking and Shooting	23
Tracking	24
Shooting	25
Fill Light	26
Connecting to Wireless Microphones	27
Phone Charging	28
Indicators	28
Firmware Update	29
4.2 Apple DockKit Tracking	29
4.3 Remote Control With Watch	32
5 Maintenance	33


6	Appendix	34
6.1	Specifications	34
6.2	Phone Compatibility	34

1 Product Profile

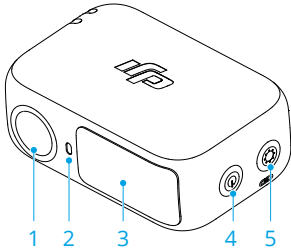
1.1 Osmo Mobile 8



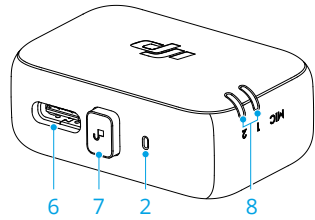
- | | |
|--------------------------------|-----------------------------------|
| 1. Magnetic Phone Clamp | 10. Shutter/Record Button |
| 2. Counterweight Mounting Hole | 11. Power/M Button |
| 3. Function Status Indicator | 12. Tilt Motor |
| 4. Pan Motor | 13. Roll Motor |
| 5. Status Panel | 14. Trigger |
| 6. Side Wheel | 15. Charging Port (USB-C) |
| 7. Joystick | 16. Built-in Tripod |
| 8. 1/4"-20 UNC Port | 17. Output Port (USB-C) |
| 9. Switch Button | 18. DJI OM Multifunctional Module |

 • DJI OM Multifunctional Module is hereinafter referred to as “Multifunctional Module”.

1.2 Multifunctional Module



1. Tracking Camera
2. Camera Status Indicator
3. Fill Light
4. Brightness Control Button
5. Color Temperature Control/Bluetooth Pairing Button

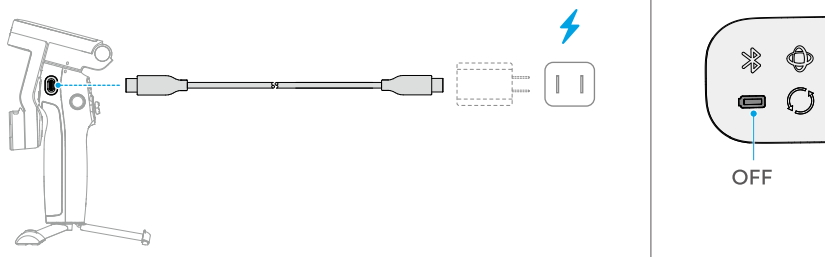


6. Audio Data/Phone Charging Port (USB-C)
7. Release Button
2. Camera Status Indicator
8. Wireless Microphone Status Indicator

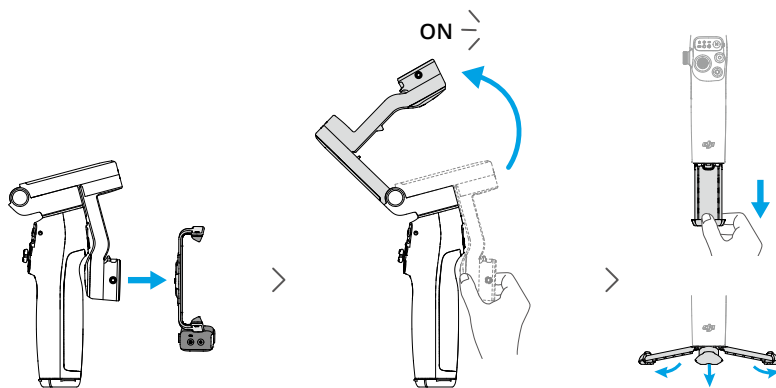
2 Using for the First Time

2.1 Charging

The product is fully charged when the Battery Level Indicator turns off.

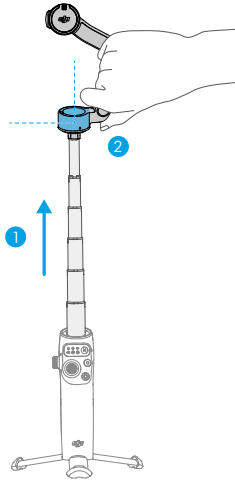


2.2 Unfolding

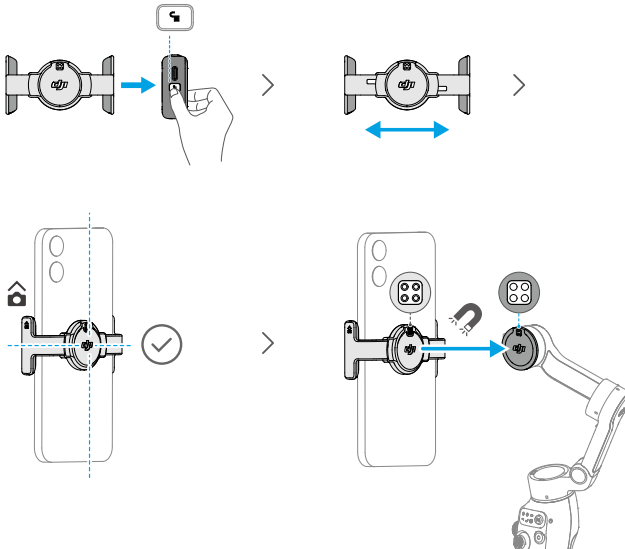






- The built-in tripod is suitable for stable, level surfaces in windless environments. In other conditions, it is recommended to attach DJI OM Grip Tripod (sold separately) to the bottom of the gimbal.

If you extend the built-in extension rod, make sure to adjust the Pan Motor to be level with the ground. This ensures balance after the phone is attached to the gimbal.



2.3 Attaching the Phone



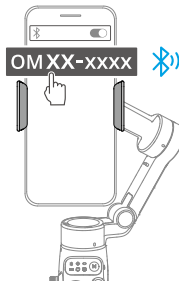
A steady gimbal mode light ( /  /  / ) indicates that the gimbal is stabilizing the phone. If the light is not displayed after you attach the phone, press the M button to enable stabilization.

2.4 Connecting to the DJI Mimo App


1. Scan the QR code to download DJI Mimo.



2. Enable Bluetooth on your phone, open DJI Mimo, and connect to the gimbal.



-
- To check the Android and iOS operating system versions supported by DJI Mimo, visit <https://www.dji.com/downloads/djiapp/dji-mimo>.
 - The interface and functions of DJI Mimo may vary as the software version is updated. Actual user experience is based on the software version used.
-

-  If Bluetooth connection fails, try the following steps:
1. Go to Bluetooth settings on your phone. Remove any existing connections with the gimbal and forget the device.
 2. [Reset Bluetooth for the gimbal](#).
 3. Tap the new device name in Bluetooth settings. Once connected, relaunch DJI Mimo.
-

2.5 Firmware Update

A prompt will appear in DJI Mimo when new firmware is available. Tap the prompt and follow the on-screen instructions to update the firmware.

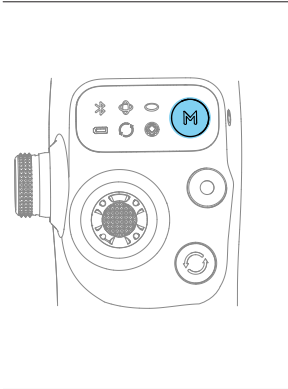
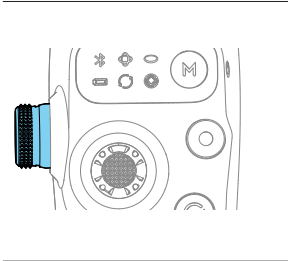
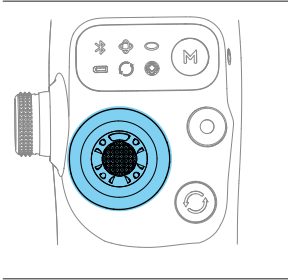
Ensure that the Battery Level Indicator shows solid green before the update. DO NOT exit DJI Mimo during the update.

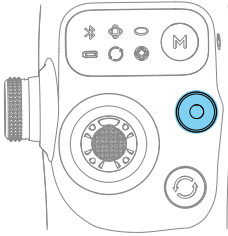
If the update fails, restart DJI Mimo, reestablish the Bluetooth connection, and retry.

3 Basic Features

3.1 Buttons and Ports

The following feature descriptions are **based on DJI Mimo usage examples**. Support for certain features in the system camera may vary depending on the phone model. For more information, visit <https://www.dji.com/osmo-mobile-8>.

	<p>Power/M Button</p> <p>When powered off</p> <p>With the gimbal folded, press once: Check the battery level</p> <p>With the gimbal unfolded, press once: Power on</p> <p>When powered on</p> <p>Press once: Switch between gimbal modes</p> <p>Press three times: Enter standby mode (press any button to exit)</p> <p>Press and hold: Power off</p> <p>* The M button can also control phone charging using the gimbal or Multifunctional Module.</p>
	<p>Side Wheel</p> <p>Press once: Switch between focus, zoom, or joystick zoom mode</p> <p>Rotate: Control focus or zoom</p> <p>In joystick zoom mode, vertically move the joystick to control zoom.</p> <p>* The side wheel can control the fill light when used with Multifunctional Module.</p>
	<p>Joystick</p> <p>Move vertically and horizontally to tilt and pan the mobile phone. The joystick control direction can be set in DJI Mimo.</p> <p>Push the joystick twice to the left or right, and the gimbal will automatically rotate.</p>



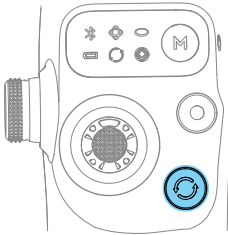
Shutter/Record Button

Press once in the camera view: Take a photo or start/stop recording

Press once in other views: Return to the camera view

Press twice: Take a photo during recording

Press and hold: Burst shooting when in photo mode



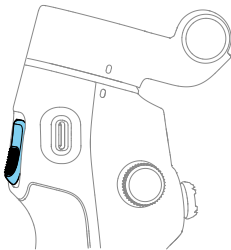
Switch Button

Press once: Switch between front and rear cameras

Press twice: Switch between landscape and portrait mode

Press three times: Switch between photo and video modes

Press and hold: View playback



Trigger

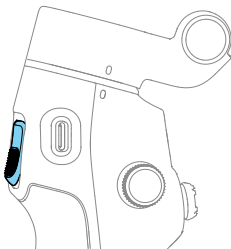
Press once: Start or stop ActiveTrack

Press twice: Recenter the gimbal

Press three times: Rotate the phone 180 degrees in the horizontal plane

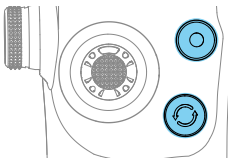
Press once, and then press and hold: Adjust the follow-speed to fast mode. Release to exit.

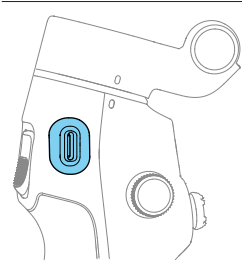
Press and hold: Enter lock mode. Release to exit.



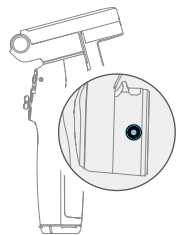
Combination Operation

Press the switch button, shutter/record button, and trigger simultaneously for more than one second to reset the Bluetooth name and connection and reconnect.





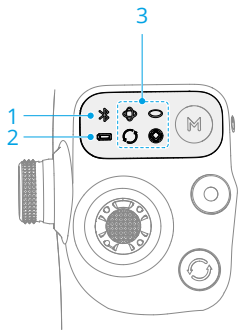
Charging Port (USB-C)
Charging the gimbal





Counterweight Mounting Hole
For mounting counterweights when the phone has a heavy lens module or lens filters attached.

* Contact official technical support to purchase the counterweights.


3.2 Indicators



1. System Status Indicator







	Pulses green	Bluetooth disconnected
	Solid green	Bluetooth connected

2. Battery Level Indicator

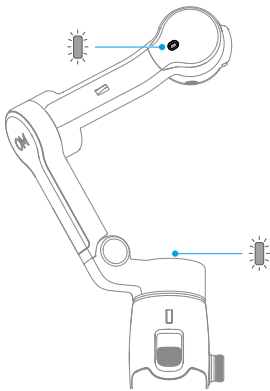
	Blinks red quickly	≤5%
---	--------------------	-----

	Solid red	6%-19%
	Solid yellow	20%-60%
	Solid green	>60%

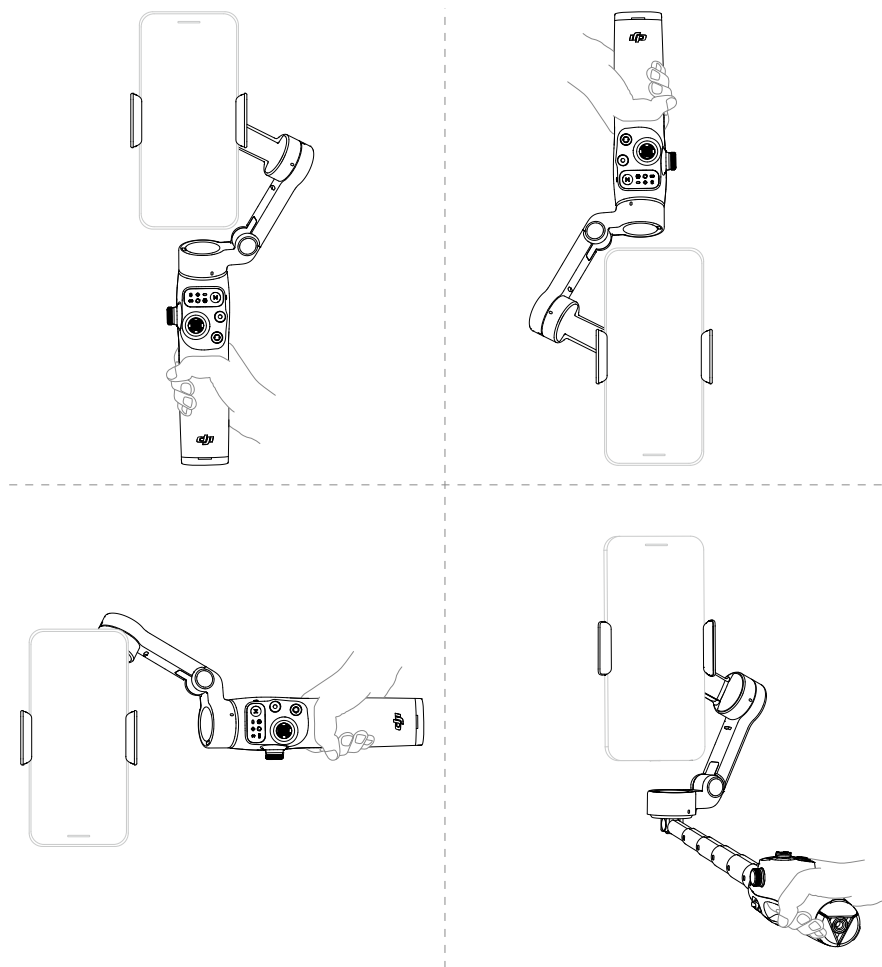
3. Gimbal Mode Indicator

	On	PTF
	On	PF
	On	FPV
	On	SpinShot
	Blinks alternately	Firmware updating
	Blink simultaneously	Firmware update failed or abnormal status

4. Function Status Indicator

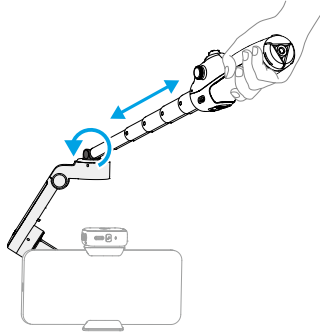


3.3 Grip Gestures



- Grip gestures apply to both landscape and portrait orientations.
- If the built-in tripod is extended, grip the handle to ensure stability. **DO NOT** grip only the tripod.

- The built-in extension rod of Osmo Mobile 8 can be used for low-angle shooting. Click to watch the [tutorial videos](#).



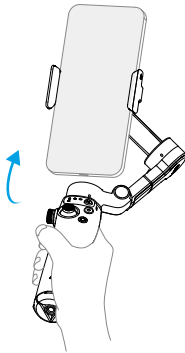
3.4 Follow Modes

Click to watch the [tutorial videos](#).

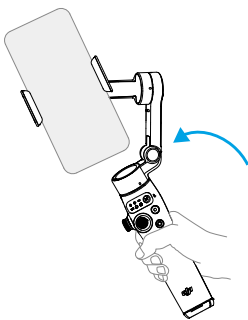
Follow mode	Effect
PTF (Pan and tilt follow)	①+②
PF (Pan follow)	①
FPV (Pan, tilt, and roll follow)	①+②+③
SpinShot	①+②+③+④
Lock	The phone does not follow handle movements



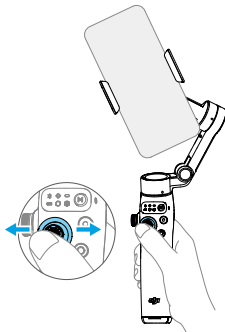
① Rotate the handle in the horizontal plane and the phone follows



② Swing the handle back and forth and the phone follows



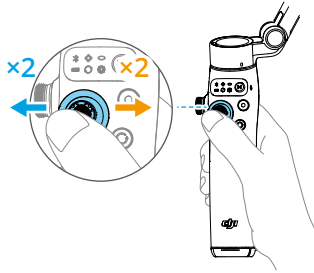
③ Rotate the handle in the vertical plane and the phone follows



④ Move the joystick left or right to rotate the phone in the vertical plane

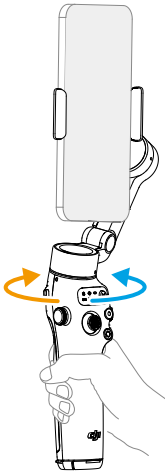
3.5 Automatic Pan and Roll

Push the joystick twice to the left or right, and the gimbal will automatically pan or roll in different follow mode.

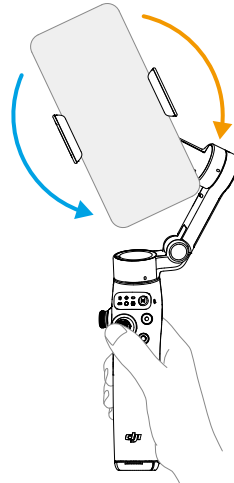


PTF / PF / FPV

SpinShot



Automatic pan for 360°

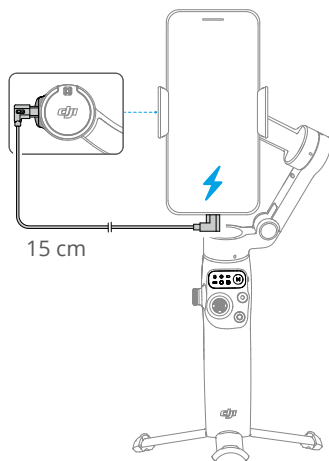


Rotation stops when the gimbal limit is reached

Double-press the trigger to stop the rotation and recenter the gimbal.

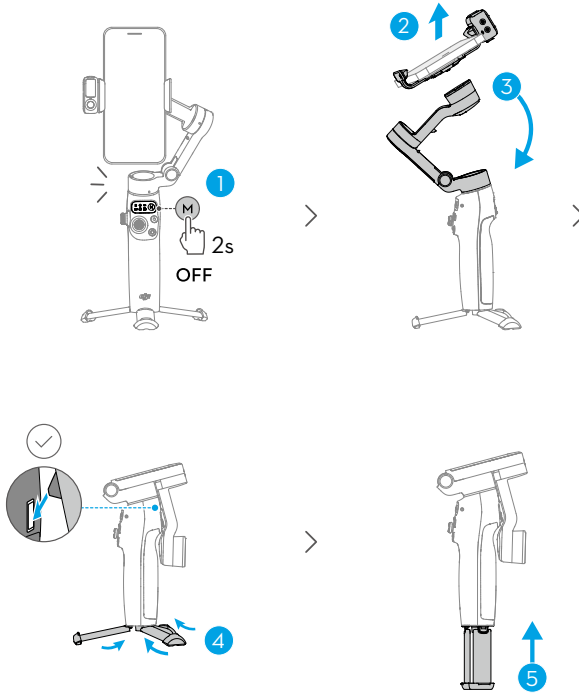
3.6 Phone Charging

- Make sure that the gimbal is sufficiently charged (the indicator shows  or ).



3.7 Storage

- For Osmo Mobile 8, retract the extension rod before performing the following steps.
- When the gimbal powers off, it automatically rotates to the folding position. Remove the phone, phone clamp, and Multifunctional Module together. For the next use, attach them as a whole and unfold the gimbal to start shooting.



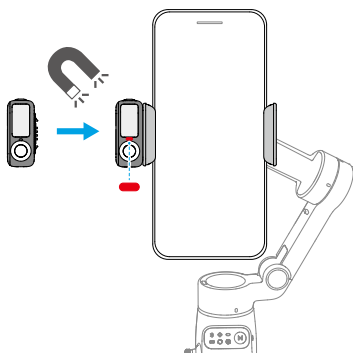
4 Advanced Features

4.1 Multifunctional Module

Installing and Removing

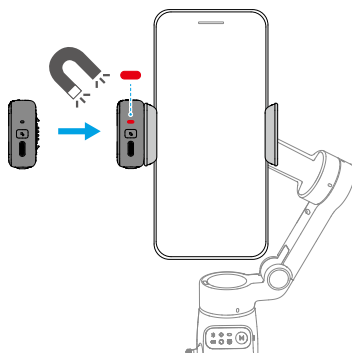
Example ①

Capture photos or videos of yourself



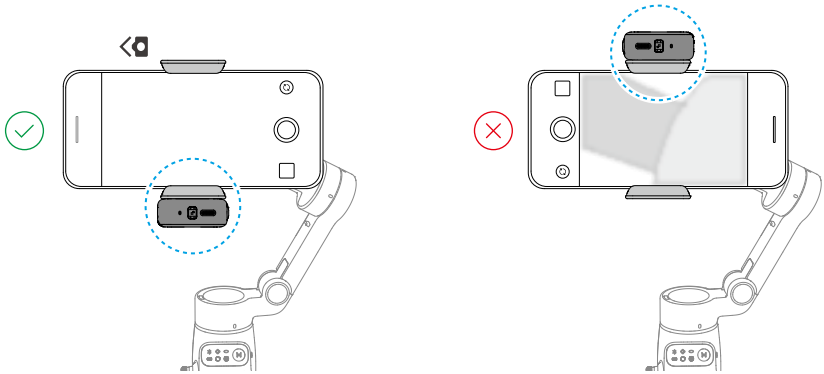
Example ②

Capture photos or videos of others

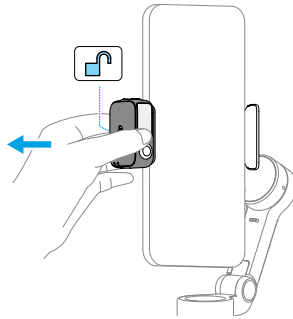


-
- If the indicator shown in the preceding figure does not turn on after Multifunctional Module is installed, check whether the marks on the gimbal and the phone clamp are aligned.
 - If Multifunctional Module is idle for more than five minutes, it automatically enters sleep mode and the indicator turns off. To exit sleep mode, press the trigger on the gimbal.
-

Avoid blocking the rear camera when shooting in landscape mode.



Remove Multifunctional Module:



Tracking and Shooting

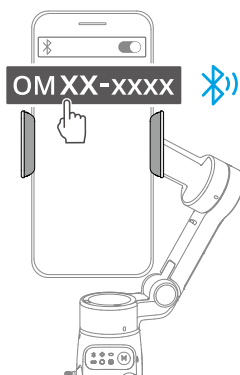
Multifunctional Module allows you to enable tracking in the system camera and third-party camera apps, without the need to use DJI Mimo.


-
- ⚠ • Multifunctional Module supports tracking people, cats, and dogs.
 - The tracking and shooting features of Multifunctional Module are disabled in DJI Mimo.
-
- 💡 • Position the tracking camera of Multifunctional Module and the phone camera towards the subject. For example, both cameras are used to take selfies in the following illustrations.

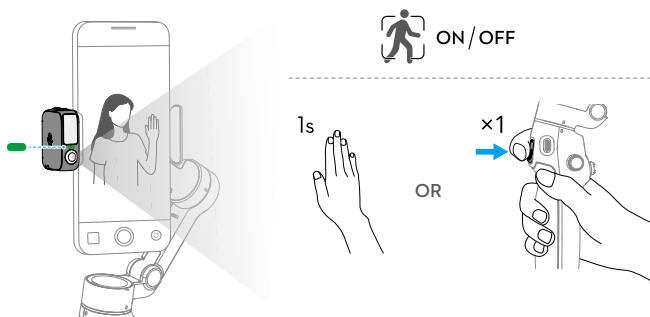
- To achieve optimal gesture recognition, keep the subject 0.5m to 3m away from the tracking camera.
- During tracking, keep the subject 0.5m to 8m away from the tracking camera.

Tracking

1. Enable Bluetooth on the phone and connect to the gimbal.



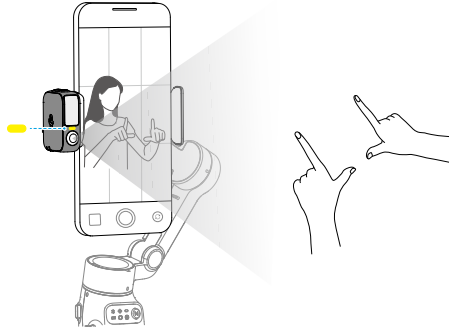
2. Enable tracking: Show the  gesture to the camera or press the trigger. The indicator turns solid green.



3. Adjust the composition as needed during tracking.

- Method 1: Use the joystick.
- Method 2: Use hand gestures.

Show the 🖐️🖐️ gesture to the camera. The indicator turns solid yellow and tracking is automatically paused. The subject can move to the desired position in the frame.



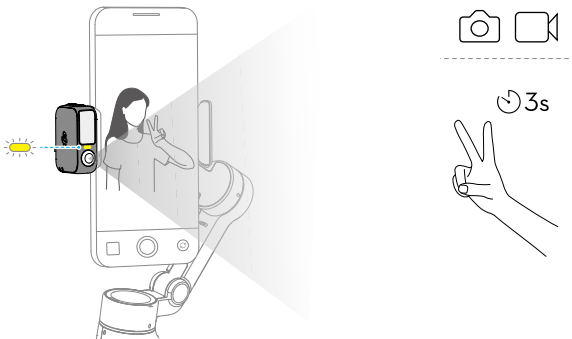
Show the 🖐️🖐️ gesture again to confirm the composition. The indicator turns solid green and tracking automatically resumes.

To restore the default composition for each method, press the trigger twice.

4. Stop tracking: Show the 🖐️ gesture or press the trigger again. The indicator turns solid red.

Shooting

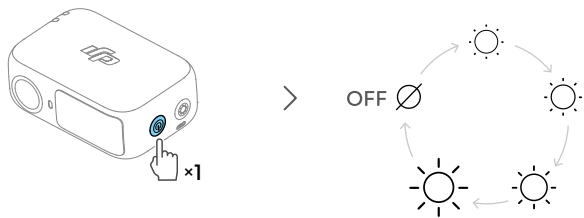
Whether tracking is enabled or not, you can use the 🖐️ gesture to start a countdown for taking a photo or starting/stopping recording. The indicator pulses yellow during the countdown.



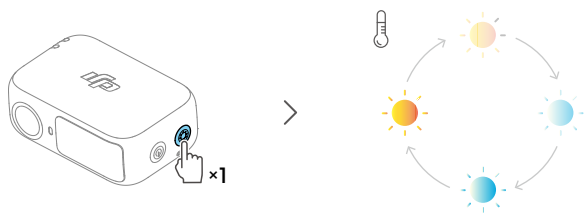
Fill Light

Make sure that Multifunctional Module is properly installed.

Adjust brightness:

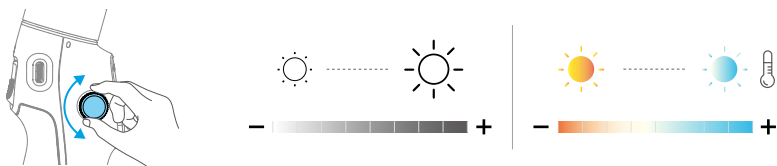


Adjust color temperature:



Osmo Mobile 8 allows you to control the fill light on Multifunctional Module using the side wheel:

- Press and hold: Turn on/off the fill light
- Rotate: Adjust brightness or color temperature



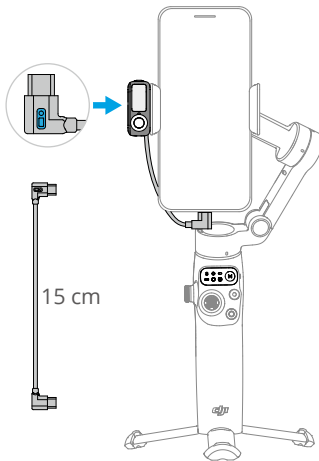
- Press once: Switch between controlling brightness and color temperature
- Press twice in DJI Mimo: Set the effect of rotating the side wheel to focus/zoom control or brightness/color temperature control

Connecting to Wireless Microphones

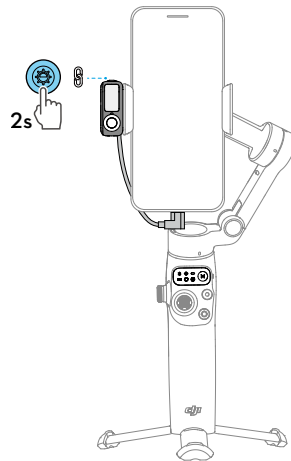
Multifunctional Module can connect to two wireless microphone transmitters (hereinafter referred to as “transmitters”). The two transmitters must be the same model. Supported transmitters:

- DJI Mic 3
- DJI Mic Mini
- DJI Mic 2

1. Connect Multifunctional Module to the phone.



2. Enable Bluetooth pairing for Multifunctional Module.



3. Power on the transmitter and set linking mode. For more information, refer to the User Manual of the corresponding microphone on the official website.

- DJI Mic Mini / DJI Mic 3 : Linking mode with the receiver.
- DJI Mic 2: Linking mode via Bluetooth.



4. Once linked, the indicator of Multifunctional Module turns solid green. The indicator of the transmitter switches to the linked status in the corresponding mode. You can start recording.

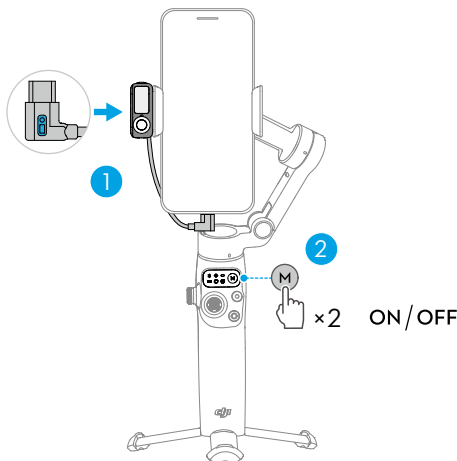


- To prevent the cable connecting Multifunctional Module and the phone from obstructing the gimbal, bend the cable as needed. Make sure to use the cable included in the package.
- For iPhone 14 and earlier models, a USB-C to Lightning cable (sold separately) is required to connect to Multifunctional Module.

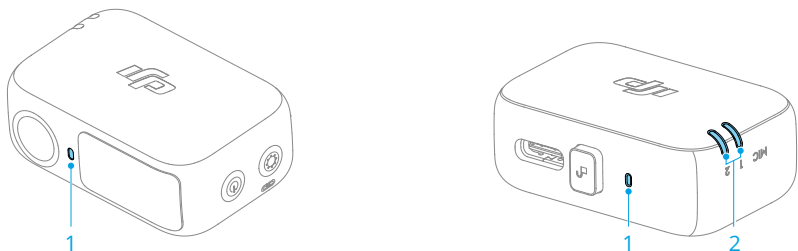
- You can configure wireless microphone settings in DJI Mimo.




Phone Charging


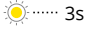

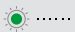
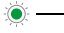


- ☀ • Make sure that the gimbal is sufficiently charged (the indicator shows  or ).



Indicators



1. Camera Status Indicator		
	Solid red	Tracking disabled or subject lost
	Solid green	Subject being tracked
	Blinks green	Subject lost temporarily

	Solid yellow	Composition being adjusted
	Blinks yellow	Countdown for photo shooting or video recording
2. Wireless Microphone Status Indicator		
	Blinks green quickly	Multifunctional Module pairing with a transmitter
	Blinks green slowly	Multifunctional Module paired with a transmitter but not connected to the phone using the cable
	Solid green	Ready for audio recording
	Solid red	Battery less than 10% for the paired transmitter
	Solid yellow	Noise cancelling enabled for the paired transmitter


Firmware Update

Make sure that Multifunctional Module is [properly installed](#).

When using DJI Mimo to update the gimbal firmware, the module firmware is updated together. Please wait for the upgrade to complete.

4.2 Apple DockKit Tracking

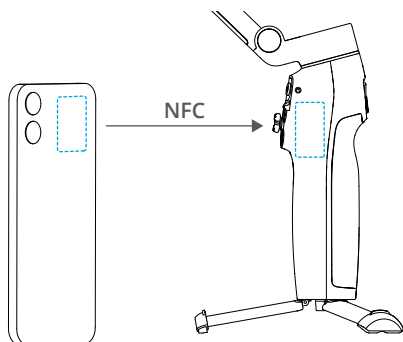
iPhone users can connect to the gimbal via NFC (near-field communication) and use the tracking feature based on Apple DockKit, without the need for the Multifunctional Module. This feature supports the system camera and third-party apps. For detailed instructions, watch the [tutorial videos](#).

- 
- Device requirement:
 - ♦ Model: iPhone 12 or later, excluding iPhone SE (3rd generation) and iPhone 16e.
 - ♦ System: iOS 18.5 or above.
 - This feature cannot be used simultaneously with the tracking feature of Multifunctional Module or DJI Mimo.
 - Refer to the [compatibility list](#) for more information on third-party apps that support Apple DockKit.

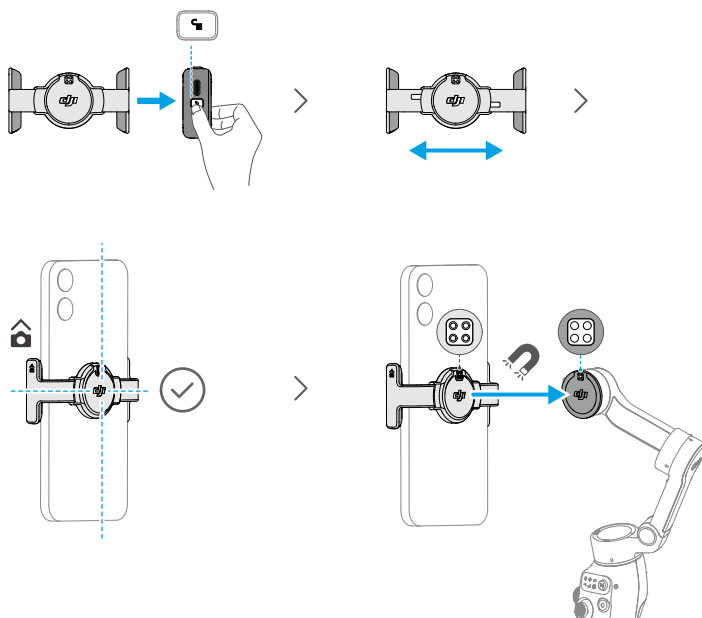
DockKit Pairing

1. Unlock the phone and stay on the home screen. Make sure the network connection is normal. Enable Bluetooth and NFC.

2. Unfold the gimbal. Touch the phone's NFC area to the gimbal's NFC area. Wait for the pop-up window and follow the instructions.



3. Remove the Multifunctional Module and then attach the phone to the gimbal.



4. The gimbal will nod when pairing is successful.



To pair with another phone, [reset Bluetooth for the gimbal](#) before pairing.

Enabling Tracking

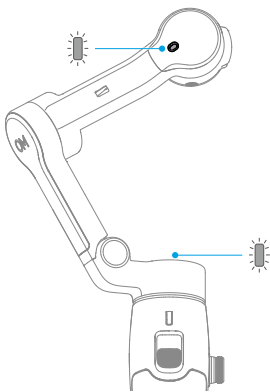
Open the system camera, tracking will automatically start when the subject enters the frame.

Press the trigger once to enable or disable DockKit tracking.

The Apple Watch can be used for remote control if it is paired with the phone. *

* The watch requires version of WatchOS 11 or later.

Function Status Indicator



DockKit Paring Status ^[1]		
	Blinks white slowly	NFC not paired
	Blinks white quickly	NFC pairing
	Solid white	NFC succesfully paired
DockKit Tracking Status		
	Solid green	DockKit is enabled but not tracking. Tracking will automatically start when the subject enters the frame.
	Pulses green	DockKit tracking
	Off	DockKit disabled

[1] Disabled by default. Modify the status indicator settings in DJI Mimo.

4.3 Remote Control With Watch

You can use DJI Mimo on an Apple Watch to view the camera feed, control the gimbal, and enable ActiveTrack remotely.

1. Pair the watch with your phone and install DJI Mimo on both devices.
2. Run DJI Mimo on the phone, connect to the gimbal, and enter the camera view.
3. Run DJI Mimo on the watch to start remote control.



- Keep the devices within the Bluetooth range.
 - To view the supported watch devices, visit <https://www.dji.com/osmo-mobile-8/faq>.
-

5 Maintenance



- Put out any product fire using water, sand, fire blanket, or a dry powder fire extinguisher.
 - Never disassemble or pierce the product in any way or the battery may leak, catch fire, or explode.
-



- It is recommended to use a soft, dry cloth to clean the product.
 - When the phone is attached to the gimbal, the compass feature of the phone may experience interference. In such cases, calibrate the compass according to the prompts in the phone.
 - The NFC (near-field communication) and wireless charging functions of the phone may be affected when the phone clamp is attached. These functions will no longer be affected once the phone clamp has been removed from the phone.
 - The built-in extension rod contains a spring. If the extension rod is extended for more than a week, the spring may become deformed and the extension rod can no longer be used normally. It is recommended to retract the extension rod and fold the gimbal after use.
-

6 Appendix

6.1 Specifications

Visit <https://www.dji.com/osmo-mobile-8/specs> for more information.

6.2 Phone Compatibility

Visit <https://www.dji.com/osmo-mobile-8> for more information.



Contact

DJI SUPPORT

This content is subject to change without notice.

Download the latest version from



<https://www.dji.com/osmo-mobile-8/downloads>

If you have any questions about this document, please contact DJI by sending a message to DocSupport@dji.com.

DJI and OSMO are trademarks of DJI.

Copyright © 2025 DJI All Rights Reserved.