

FLASHPOINT



FPLFEVS200

EV-S200

STICK LIGHT FLASH HEAD

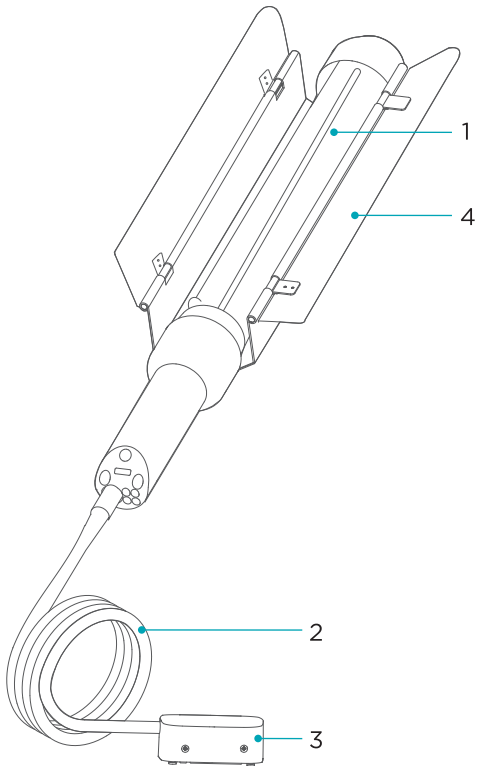
Thank You for choosing **FLASHPOINT**.

The Stick Light Flash Head EV-S200 has a compact structure, 200Ws strong power and convenient installing method. It can be collocated with eVOLV 200 & eVOLV 200Pro with a simple push, quite suitable for portrait shooting, studio shooting, jewelry shooting, medical shooting, outdoor shooting, etc.

Warning

- Do not disassemble. Should repairs become necessary, this product must be sent to an authorized maintenance center.
- Keep out of reach of children.
- Stop using this product if it breaks open due to extrusion, falling or strong hit. Otherwise, electric shock may occur if you touch the electronic parts inside it.
- Do not leave or store the flash unit if the ambient temperature reads over 50°C.
- Do not fire the flash directly into the eyes (especially those of babies) within short distances. Otherwise, visual impairment may occur.
- Do not use the flash unit in the presence of flammable gases, chemicals and other similar materials. In certain circumstance, these materials may be sensitive to the strong light emitting from this flash unit and fire or electromagnetic interference may result.
- In certain circumstance, please pay attention to the relevant warnings.
- Always keep this product dry. Do not use in rain or in damp conditions.
- Turn off the devices immediately in the event of malfunction.

Name of Parts

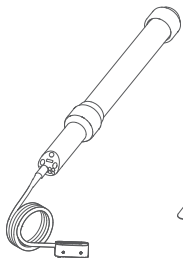


1. Flash Tube

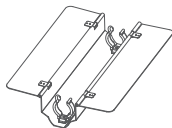
2. Power Cable

3. Male Port of Power Socket

4. Hood



Stick Light Flash
Head S200



Hood



Carry Bag

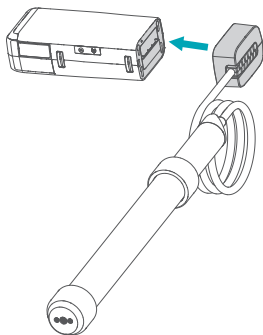


Instruction
Manual

Instructions for Use

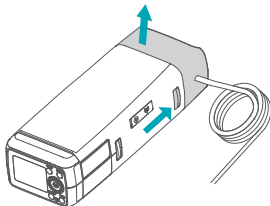
1. Connecting to Pocket Flash eVOLV 200 & eVOLV 200Pro

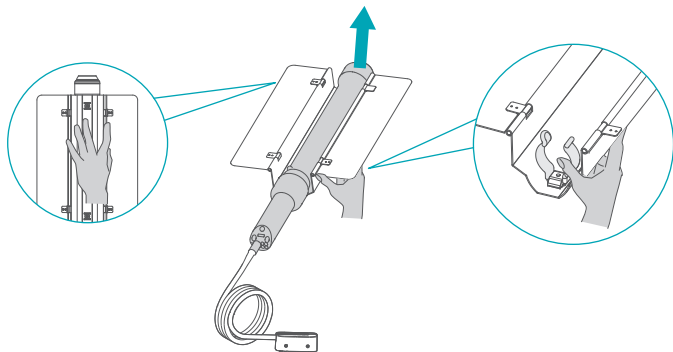
Insert the male port of power socket of EV-S200 into the female port of eVOLV 200/eVOLV 200Pro flash head, push forward to connect.



2. Detaching EV-S200

Press the locking button of eVOLV 200 / eVOLV 200Pro and pull out the male port of power socket of EV-S200.





3. Detaching Hood

Turn off the flash, hold the upper back of the hood with your left hand, press your right thumb against the edge of the clamp ring and break it slightly to the right while pulling the flash tube upwards.

Note: Please do not use brute force.

Technical Data

Model	EV-S200
Flash Power	200Ws
Flash CCT	5800K±200K
Dimension (excluding the power cable and including the hood)	652mm x 210mm x 60mm
Net Weight (including the hood)≈	1.12 kg

Changes made to the specifications or designs may not be reflected in this manual.

Maintenance

- Shut down the device immediately should abnormal operation be detected.
- Avoid sudden impacts and the product should be dedusted regularly.
- It is normal for the light beads to be warm when in use.
- Avoid continuous flashes if unnecessary.
- Maintenance of the light must be performed by our authorized maintenance department which can provide original accessories.
- This product, except consumables, is supported with a one - year warranty.
- Unauthorized service will void the warranty.
- If the product had failures or was wetted, do not use it until it is repaired by professionals.
- Changes made to the specifications or designs may not be reflected in this manual.

Declaration of Conformity:

Hereby declares that the This equipment are in compliance with the essential requirements and other relevant provisions of EU Directive 2014/35/EU, 2014/30/EU. They are allowed to be used in all EU member states.

For more information of DoC.

FCC Warning

This device complies with part 15 of the FCC Rules. Operation is subject to the following two conditions:

- (1) This device may not cause harmful interference, and
- (2) this device must accept any interference received, including interference that may cause undesired operation.

Any Changes or modifications not expressly approved by the party responsible for compliance could void the user's authority to operate the equipment.

Note: This equipment has been tested and found to comply with the limits for a Class B digital device, pursuant to part 15 of the FCC Rules. These limits are designed to provide reasonable protection against harmful interference in a residential installation. This equipment generates uses and can radiate radio frequency energy and, if not installed and used in accordance with the instructions, may cause harmful interference to radio communications. However, there is no guarantee that interference will not occur in a particular installation. If this equipment does cause harmful interference to radio or television reception, which can be determined by turning the equipment off and on, the user is encouraged to try to correct the interference by one or more of the following measures:

- ▶ Reorient or relocate the receiving antenna.
- ▶ Increase the separation between the equipment and receiver.
- ▶ Connect the equipment into an outlet on a circuit different from that to which the receiver is connected.
- ▶ Consult the dealer or an experienced radio/TV technician for help.

One Year Flashpoint Limited Warranty

Flashpoint warrants to the original purchaser that your Flashpoint product shall be free from defects in material and workmanship for the period of one (1) years from the date of purchase (or delivery as may be required in certain jurisdictions), or thirty (30) days after replacement, whichever comes later.

Flash point's entire liability and your exclusive remedy for any breach of warranty shall be, at Flash point's option, to repair or replace the hardware, provided that the hardware is returned to the point of purchase or such other place as Flashpoint may direct with a copy of the sales receipt or dated itemized receipt. Flashpoint may, at its option, replace your product, offer to provide a functionally equivalent product, or repair any product with new, refurbished or used parts as long as such parts are in compliance with the product's technical specifications. Any replacement hardware product will be warranted for the remainder of the original warranty period or thirty (30) days, whichever is longer, or for any additional period of time that may be applicable in your jurisdiction. If the product has been discontinued, the warranty provider reserves the right to replace it with a model of equivalent quality and function.

This warranty does not cover problems or damage resulting from accident, abuse, misapplication, or any unauthorized repair, modification or disassembly, improper operation or maintenance, normal wear and tear, or usage not in accordance with product instructions or connection to improper voltage supply, use of consumables, such as replacement batteries, not supplied by Flashpoint, except where such restriction is prohibited by applicable law.

Except where prohibited by applicable law, this warranty is nontransferable and is limited to the original purchaser and the country in which the product was purchased. This warranty gives you specific legal rights, and you may also have other rights, including a longer warranty duration that may vary under local laws.

To start a warranty claim contact the Flashpoint Customer Service Department to obtain a return merchandise authorization ("RMA") number, and return the defective product to Flashpoint, along with the RMA number and proof of purchase.


Question about our product line?

Need Product Support?

We are proud of our products and celebrate our customers. We are with you, from product selection to everyday use. Be secure with your purchase and reach us as you need.

 212-647-9300

 support@flashpointlighting.com

 Flashpoint,
42 West 18th Street,
New York, NY 10011

You can always contact us at BRANDS@ADORAMA.COM for personal technical support. Our website contains a wide range of Support and FAQ pages with valuable technical assistance.

Flashpoint is a registered trademark of ADORAMA CAMERA.

© 2023 Adorama Camera, Corp.

All Rights Reserved.