

# FLASHPOINT



FPLFML150II

## **ML-150II** MACRO RING FLASH

# Foreword

Thank you for purchasing!

**Macro ring flash ML-150II** has highly precise output power adjustment, power-saving dormancy mode and PC sync function. It is quite suitable for medical photography, jewelry photography, microbiological photography, clothing detail photography and watch precision detail photography.

## Main Features

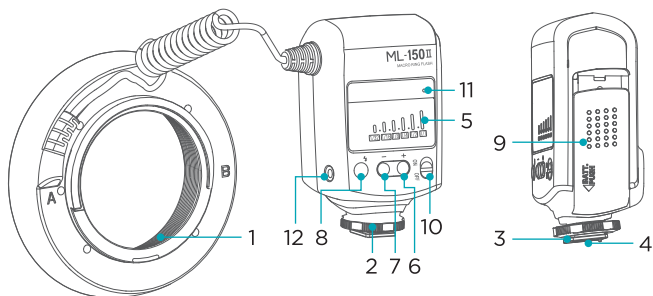
Compatible lens diameter: 49mm, 52mm, 55mm, 58mm, 62mm, 67mm, 72mm, 77mm. Support fine adjustment of output power from 1/1 to 1/32 in  $\pm 1/2$ EV stop.

Single triggering hot shoe contact is compatible with most cameras on market.

## Warning

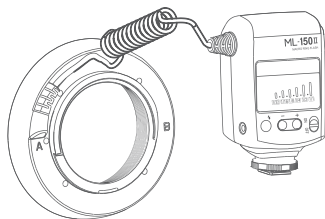
- Always keep this product from rain or damp in order to prevent fire or electric shock.
- The flash unit contains high voltage electric parts, do not try to open or repair the flash unit. If you touch the high-voltage circuit inside this product, electric shock may occur. Return it back to the nominated repair service station.
- If the unit is extruded, fallen, suffered from strong impact and thus its inside is exposed, stop using immediately so as to prevent electric shock leading from touching the inside electric components.
- Do not fire the flash direct to the eyes at short distances (especially baby's eyes), or it may cause damage to the eyes. When taking flash picture toward baby, it is recommended to keep the flash unit at least 1 meter (3.3 feet) away from the subject. Or use diffuser or bounce the light to soften its intensity.
- Always keep the battery or anything easy to be gulped out of children's reach. In case of gulping due to carelessness, please contact a doctor immediately.
- When there is caustic liquid leakage inside, it is necessary to wear gloves to take out the batter.
- Do not use the flash unit in the flammable gas, chemical or such liquids. These materials may be sensitive to the flash from the unit in some circumstance. It may cause fire or electromagnetic interference.
- Do not leave or store the flash unit in temperature over 40°C (such like in the automobile), or it may damage the electronic components.
- The flash unit isn't water resistant. Please keep it away from rain or humidity.
- If the flash unit is idle for long, please take out all batteries and keep the flash unit in dry area.

# Names of Parts



- |                     |                           |                        |
|---------------------|---------------------------|------------------------|
| 1. Ring Flash Head  | 5. Output Level Indicator | 9. Battery Cover       |
| 2. Locking Ring     | 6. Power + Button         | 10. Power Switch       |
| 3. Hot Shoe         | 7. Power - Button         | 11. Charging Indicator |
| 4. Hot Shoe Contact | 8. Test Button            | 12. PC Sync Socket     |

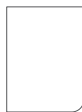
## What's Inside



Macro Ring Flash × 1



Adapter Rings Kit AR-R Kit  
(49mm, 52mm, 55mm, 58mm,  
62mm, 67mm, 72mm, 77mm) × 1



Instruction Manual × 1

# Operation Instruction

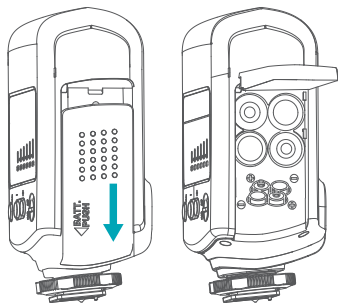
## Battery Installation

### 1. Open the battery cover

Slide the battery cover along the arrow direction and then open it by thumb.

### 2. Insert the batteries

Install the batteries according to the direction indicated in the battery holder and make sure the + and - battery contacts are correctly inserted at the battery compartment.



### 3. Close the battery cover

Slide the battery cover along the arrow direction and slide it back in place. The battery cover will be locked when there is a "click" sound.

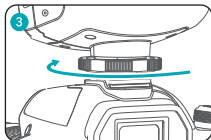
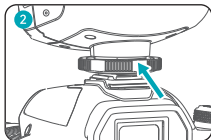
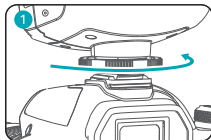
**Note:** Take care of the hot battery when changing them after continuous flashes. Take out of the battery when idle in case the battery leakage damages the flash unit.

## Mounting Macro Ring Flash on the Camera

### 1. Attach the Control Unit on the camera

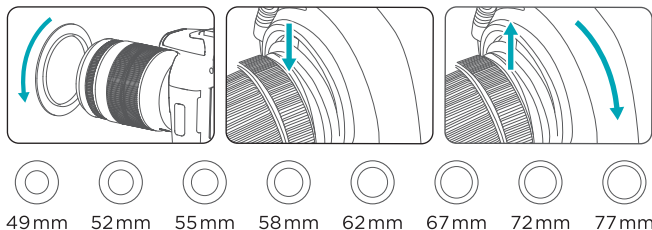
- Twist the mounting lock to loosen it.
- Slide the mounting foot of control unit into the camera's hot shoe completely.
- Twist the mounting lock to tighten it.

**Tip:** To remove the flash, loosen the fixed knob and slide it out of the hot shoe of camera.



## 2. Attach the Flash Ring on the camera.

- 8 types of adapter rings available to suit the camera lens: 49mm, 52mm, 55mm, 58mm, 62mm, 67mm, 72mm and 77mm.
- Choose the adapter ring needed for your camera and attach to the camera lens.
- Mount the flash ring onto the adapter ring.



### Power Switch

Switch the power switch to ON position to power on. Slide the power switch to OFF position to power off.

### Charging Indicator Instruction

Turn the flash on, the charging indicator turns red and it is ready to shoot.

If the charging indicator lamp blinks red in every 1s, it indicates low battery. In such case, please replace the batteries.

### Output Control

The flash unit has 6 stops of power output control from 1/32 to 1/1 in 1/2 stop of increment.

Press + button to increase power by 1/2 stop, otherwise, press - button to decrease power by 1/2 stop.

### Synchronization Function

The flash and camera will trigger synchronously by using a PC sync cord to connect the sync terminals of the camera and the flash together.

**Note:** PC sync cord is sold separately.

### Power Saving Function

The flash unit is equipped with power saving mode. When idle for about 30 minutes, it will enter deeper sleep state automatically to save power. To restart the unit, just press any button.

## Protection Function

To prevent the flash head from getting too hot and damage, please do not flash over 50 times when in power level 1/1. Please cool down the flash unit for at least 5 minutes.

The over-temperature protection function will be activated if you continue to flash after 50 times. In this case, the charging time will turn to 7s. Please cool down the flash unit around 5 minutes and it will turn to normal state.

### Number of flashes that will activate over-temperature protection:

Power Output	Flashes (Approx.)
1/1	50
1/2 +0.5	75
1/2	100
1/4 +0.5	150
1/4	200
1/8 +0.5	300
1/8	400
1/16 +0.5	500
1/16	600
1/32 +0.5	700
1/32	800

## Systematic Over-temperature Protection

When the inner circuit is over-heating, which indicates over use of the flash unit, the inner circuit will shut down power automatically. The flash unit will turn to normal state after the inner circuit is cooled down (about 5 minutes).

## Technical Data

Model	FPLFML150II
Power Supply	4 x AA alkaline batteries
Guide Number	GN12 (ISO 100, in meter)
Flash Times	300 - 1000 times (AA alkaline batteries used)
Recycle Time	Approx. 0.1 ~ 2s (AA alkaline batteries used)
CCT	5800K±200K
Flash Duration	1/200s - 1/5000s
Dimension	Controller: 116 x 71 x 48mm
	Flash Head: 132 x 132 x 32mm
Net Weight	0.42kg



## FCC Statement

This device complies with part 15 of the FCC Rules. Operation is subject to the following two conditions:

(1) This device may not cause harmful interference, and (2) this device must accept any interference received, including interference that may cause undesired operation.

Any Changes or modifications not expressly approved by the party responsible for compliance could void the user's authority to operate the equipment.

**Note:** This equipment has been tested and found to comply with the limits for a Class B digital device, pursuant to part 15 of the FCC Rules. These limits are designed to provide reasonable protection against harmful interference in a residential installation. This equipment generates uses and can radiate radio frequency energy and, if not installed and used in accordance with the instructions, may cause harmful interference to radio communications. However, there is no guarantee that interference will not occur in a particular installation. If this equipment does cause harmful interference to radio or television reception, which can be determined by turning the equipment off and on, the user is encouraged to try to correct the interference by one or more of the following measures:

- ▶ Reorient or relocate the receiving antenna.
- ▶ Increase the separation between the equipment and receiver.
- ▶ Connect the equipment into an outlet on a circuit different from that to which the receiver is connected.
- ▶ Consult the dealer or an experienced radio/TV technician for help.

## One Year Flashpoint Limited Warranty

Flashpoint warrants to the original purchaser that your Flashpoint product shall be free from defects in material and workmanship for the period of one (1) year from the date of purchase (or delivery as may be required in certain jurisdictions), or thirty (30) days after replacement, whichever comes later.

Flashpoint's entire liability and your exclusive remedy for any breach of warranty shall be, at Flashpoint's option, to repair or replace the hardware, provided that the hardware is returned to the point of purchase or such other place as Flashpoint may direct with a copy of the sales receipt or dated itemized receipt. Flashpoint may, at its option, replace your product, offer to provide a functionally equivalent product, or repair any product with new, refurbished or used parts as long as such parts are in compliance with the product's technical specifications. Any replacement hardware product will be warranted for the remainder of the original warranty period or thirty (30) days, whichever is longer, or for any additional period of time that may be applicable in your jurisdiction. If the product has been discontinued, the warranty provider reserves the right to replace it with a model of equivalent quality and function.

This warranty does not cover problems or damage resulting from accident, abuse, misapplication, or any unauthorized repair, modification or disassembly, improper operation or maintenance, normal wear and tear, or usage not in accordance with product instructions or connection to improper voltage supply, use of consumables, such as replacement batteries, not supplied by Flashpoint, except where such restriction is prohibited by applicable law.

Except where prohibited by applicable law, this warranty is nontransferable and is limited to the original purchaser and the country in which the product was purchased. This warranty gives you specific legal rights, and you may also have other rights, including a longer warranty duration that may vary under local laws.


To start a warranty claim contact the Flashpoint Customer Service Department to obtain a return merchandise authorization ("RMA") number, and return the defective product to Flashpoint, along with the RMA number and proof of purchase.

## Question about our product line? Need Product Support?

We are proud of our products and celebrate our customers.  
We are with you, from product selection to everyday use.  
Be secure with your purchase and reach us as you need.

 212-647-9300

 [support@flashpointlighting.com](mailto:support@flashpointlighting.com)

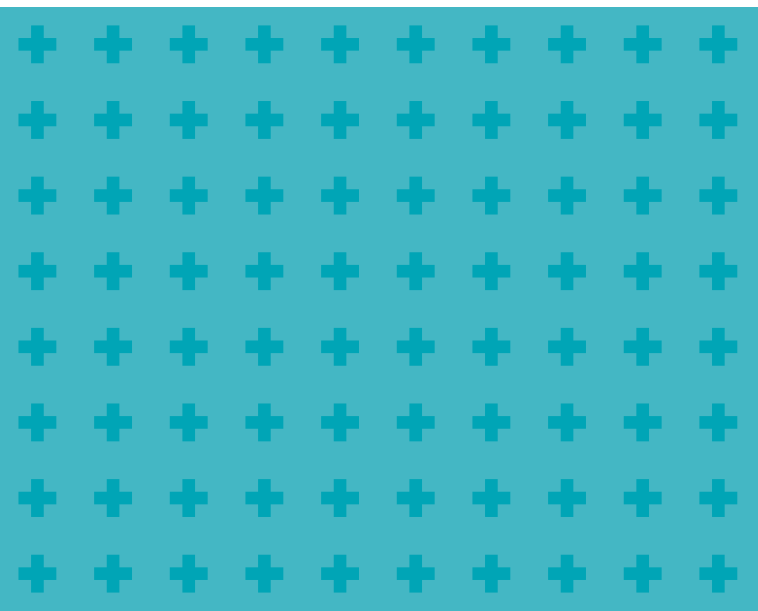
 Flashpoint,  
42 West 18th Street,  
New York, NY 10011

You can always contact us at [BRANDS@ADORAMA.COM](mailto:BRANDS@ADORAMA.COM) for personal technical support. Our website contains a wide range of Support and FAQ pages with valuable technical assistance.

Flashpoint is a registered trademark of ADORAMA CAMERA.

© 2022 Adorama Camera, Corp.

All Rights Reserved.



FLASHPOINTLIGHTING

[WWW.FLASHPOINTLIGHTING.COM](http://WWW.FLASHPOINTLIGHTING.COM)

Scan to follow our  
official instagram