

FLASHPOINT



FPLFR2400

R2400 RING FLASH HEAD

FOR THE FLASHPOINT XPLORE POWER 2400 PRO



FLASHPOINTLIGHTING
Scan to follow our
official Instagram

WWW.FLASHPOINTLIGHTING.COM

Foreword

Before using this product

Please read this user manual carefully in order to ensure your safety and the proper operation of this product. Keep for future reference.

Thank you for purchasing a Flashpoint product.

Ring Flash Head R2400 should be used in combination with P2400 Power Pack, which offers soft and even light effects and shadowless illumination.

Warning

- Always keep this product dry. Do not use in rain or in damp conditions.
- Do not disassemble. Should repairs become necessary, this product must be sent to an authorized maintenance center.
- Keep out of reach of children.
- Stop using this product if it breaks open due to extrusion, falling or strong hit. Otherwise, electric shock may occur if you touch the electronic parts inside it.
- Do not fire the flash directly into the eyes (especially those of babies) within short distances. Otherwise visual impairment may occur.
- Do not use the flash unit in the presence of flammable gases, chemicals and other similar materials. In certain circumstance, these materials may be sensitive to the strong light emitting from this flash unit and fire or electromagnetic interference may result.
- Do not leave or store the flash unit if the ambient temperature reads over 50°C. Otherwise the electronic parts may be damaged.
- Turn off the flash unit immediately in the event of malfunction.

1

Contents

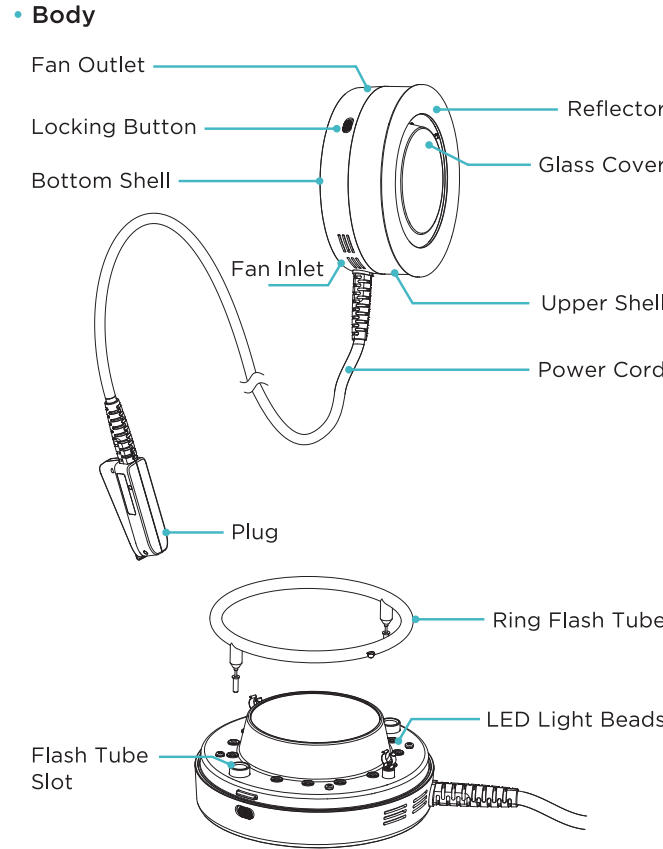
- 1 Foreword
- 1 Warning
- 4 Name of Parts
 - Body
 - What's in the Box of R2400
 - Optional Accessories
- 7 Usage
- 9 Technical Data
- 10 Maintenance
- 11 FCC Statement
- 12 Flashpoint Limited Warranty

Conventions used in this Manual

- This manual is based on the assumption that both the camera and camera flash's power switches are powered on.
- Reference page numbers are indicated by "p.*".
- The following alert symbols are used in this manual:
 - The Caution symbol indicates a warning to prevent shooting problem.
 - The Note symbol gives supplemental information.

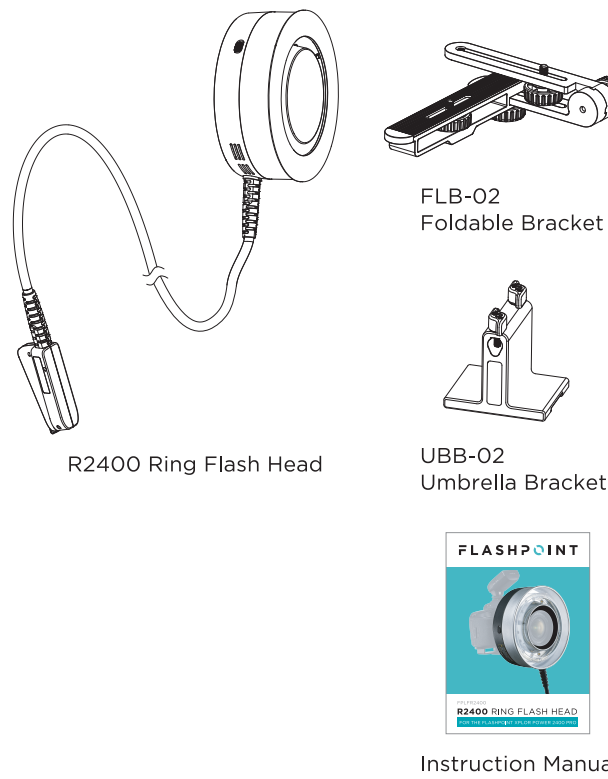
2

Names of Parts



4

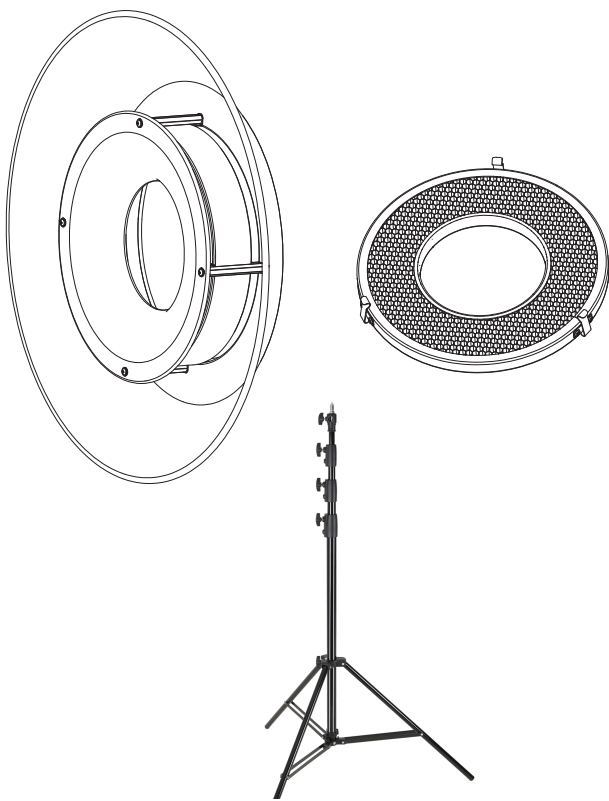
What's in the Box of R2400



5

Optional Accessories

This product can be used in combination with the following optional accessories to achieve best photography effects: RFT-21 Reflector for Ring Flash, BD-09A Honeycomb, Light Stand, etc.

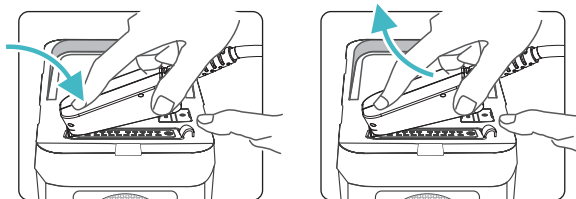


6

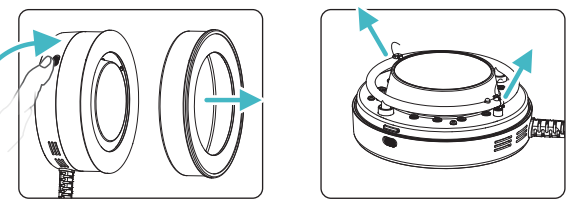
Usage

Connect to Power Pack

Insert the power cord plug of flash head into the power socket of P2400 Power Pack. Please insert the tail end of the plug into the slot firstly and insert the other end to finish installation. When taking the plug out, hold down the spring and pull out the plug upwards.



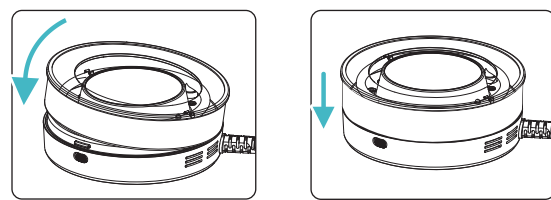
Install and Detach the Ring Flash Tube



- Detach the upper shell: push the locking button forward to the end.
- Take out the tungsten cord.

7

- Take out the flash tube from both fixing sockets.
- Insert the flash tube: match the flash tube in the Tube Socket (note: as there are anode and cathode, the flash tube cannot be inserted if the raised end is aiming at the U-type spring. The tube foot with red sign means anode.).



- Install the upper shell: please hook the upper shell into the buckle before pressing down the top of upper shell until it is locked.

8

Cautions

- Do not short circuit.
- Do not expose to rain or immerse into water. This battery is not water proof.
- Keep out of reach of children.
- Store in dry, cool, ventilated places.
- Do not put aside or into fire.

Technical Data

Model	R2400
Power	2400Ws
Guide No. (1/1 output)	64(with RFT-21 reflector)
100% Light Brightness (Lux, 0.5m distance)(≈)	10200
Working Temperature	-10°C-50°C
Modeling Lamp (LED)	4300±200k; 40W
Color Temperature	5800±200k
Dimension	205x205x80mm
Net Weight	1.8 kg

Note: Parameters will be changed by different accessories and distance. Product design and specifications are subject to change without notice.

9

Maintenance

- Shut down the device immediately should abnormal operation be detected.
- Avoid sudden impacts and the product should be dedusted regularly.
- It is normal for the flash tube to be warm when in use. Avoid continuous flashes if unnecessary.
- Maintenance of the flash must be performed by our authorized maintenance department which can provide original accessories.
- This product, except consumables e.g. flash tube, is supported with a one-year warranty.
- Unauthorized service will void the warranty.
- If the product had failures or was wetted, do not use it until it is repaired by professionals.
- Changes made to the specifications or designs may not be reflected in this manual.

10

FCC Statement

This device complies with part 15 of the FCC Rules. Operation is subject to the following two conditions:

- (1) This device may not cause harmful interference, and (2) this device must accept any interference received, including interference that may cause undesired operation. Any Changes or modifications not expressly approved by the party responsible for compliance could void the user's authority to operate the equipment.
- NOTE:** This equipment has been tested and found to comply with the limits for a Class B digital device, pursuant to part 15 of the FCC Rules. These limits are designed to provide reasonable protection against harmful interference in a residential installation. This equipment generates uses and can radiate radio frequency energy and, if not installed and used in accordance with the instructions, may cause harmful interference to radio communications. However, there is no guarantee that interference will not occur in a particular installation. If this equipment does cause harmful interference to radio or television reception, which can be determined by turning the equipment off and on, the user is encouraged to try to correct the interference by one or more of the following measures:

- Reorient or relocate the receiving antenna.
- Increase the separation between the equipment and receiver.
- Connect the equipment into an outlet on a circuit different from that to which the receiver is connected.
- Consult the dealer or an experienced radio/TV technician for help.

11

One Year Flashpoint Limited Warranty

Flashpoint warrants to the original purchaser that your Flashpoint R2400 Ring Flash Head for the XPLORE Power 2400 Pro shall be free from defects in material and workmanship for the period of one (1) year from the date of purchase (or delivery as may be required in certain jurisdictions), or thirty (30) days after replacement, whichever comes later.

Flashpoint's entire liability and your exclusive remedy for any breach of warranty shall be, at Flashpoint's option, to repair or replace the hardware, provided that the hardware is returned to the point of purchase or such other place as Flashpoint may direct with a copy of the sales receipt or dated itemized receipt. Flashpoint may, at its option, replace your product, offer to provide a functionally equivalent product, or repair any product with new, refurbished or used parts as long as such parts are in compliance with the product's technical specifications. Any replacement hardware product will be warranted for the remainder of the original warranty period or thirty (30) days, whichever is longer, or for any additional period of time that may be applicable in your jurisdiction. If the product has been discontinued, the warranty provider reserves the right to replace it with a model of equivalent quality and function.

This warranty does not cover problems or damage resulting from accident, abuse, misapplication, or any unauthorized repair, modification or disassembly, improper operation or maintenance, normal wear and tear, or usage not in accordance with product instructions or connection to improper voltage supply, use of consumables, such as replacement batteries, not supplied by Flashpoint, except where such restriction is prohibited by applicable law.

Except where prohibited by applicable law, this warranty is nontransferable and is limited to the original purchaser and the country in which the product was purchased. This warranty gives you specific legal rights, and you may also have other rights, including a longer warranty duration that may vary under local laws.

To start a warranty claim contact the Flashpoint Customer Service Department to obtain a return merchandise authorization ("RMA") number, and return the defective product to Flashpoint, along with the RMA number and proof of purchase.

12

Question about our product line? Need Product Support?

We are proud of our products and celebrate our customers. We are with you, from product selection to everyday use. Be secure with your purchase and reach us as you need.

212-647-9300

brands@adorama.com

Adorama Brands,
42 West 18th Street,
New York, NY 10011

You can always contact us at BRANDS@ADORAMA.COM for personal technical support. Our website contains a wide range of Support and FAQ pages with valuable technical assistance.

Flashpoint is a registered trademark of ADORAMA CAMERA.
© 2022 Adorama Camera, Corp.
All Rights Reserved.

13