

# FLASHPOINT



FPLFX2400P

## **XPLOR POWER 2400 PRO** **POWER PACK**

DESIGNED FOR THE PROFESSIONAL ON THE XPLOR

## Conventions used in this Manual

- This manual is based on the assumption that both the camera and camera flash's power switches are powered on.
- Reference page numbers are indicated by "p.\*\*".
- The following alert symbols are used in this manual:



The Caution symbol gives supplemental information.



The Note symbol indicates a warning to prevent shooting.

# Contents

- 1 Foreword
- 2 Features
- 3 Warning
- 4 Name of Parts
  - Power Pack
- 5 Display
- 5 Included Accessories
- 6 Optional Accessories
- 6 Power Supply
- 7 Operation
  - Power On/Off
  - Flash Head Adjustment
  - Modeling Lamp
- 9 Wireless Flash Mode
  - R2 2.4G Wireless Mode
  - 433MHz Wireless Mode
- 12 Flash Mode - M: Manual Flash
- 13 Display Flash Duration
- 13 Stable Color Temperature Function
- 14 Flash Mode - Multi: Stroboscopic Flash
  - Calculating the Shutter Speed
  - $\text{Number of Flashes} / \text{Flash Frequency} = \text{Shutter Speed}$
  - Maximum Stroboscopic Flashes
- 15 Optic S1 Secondary Unit Setting
- 16 Optic S2 Secondary Unit Setting
- 17 Setting Custom Functions
- 19 Sync Triggering
- 19 Protection Functions
- 20 Technical Data
- 21 Firmware Upgrade
- 21 Maintenance
- 22 FCC Statement
- 23 One Year Flashpoint Limited Warranty

## Foreword

The champion of Flashpoint XPLOR electronic flash is the Power 2400 Pro R2 Power Pack. The dynamic strobe power pack touts pro controls, as sweet in this AC studio version as the portable XPLOR is on the trail or halfway across the globe. The pack's sheer raw power makes it the perfect solution for demanding commercial studio use, rapid-fire fashion sessions, sizable hard-to-light event coverage, in a wedding hall, or stadium venue. Lithium batteries are grand for shooting on the move, but an AC circuit is a studio resident's heartthrob. AC power provides the most efficient and reliable source of energy supply. Photographers directly connected to mains no longer need to worry about battery transportation, recharge, and cell lifespan. Plug in the FP 2400P, throw the switch, and fire away! All of this, while syncing wirelessly with reliability and accuracy to the R2 radio family of flash.

### **The R2 Family. One Remote to Rule Them All.**

There is no other flash system with the amazing range of Watt Second options, various on-camera speedlights and triggers, off-camera remote receivers, and strobes, with uncompromising system compatibility and wireless reliability. The signal is clear and robust. R2 TTL is the wireless radio shot heard around the world.

Flashpoint R2 TTL wireless controls for Canon, Sony, Nikon, Fujifilm, Panasonic, Olympus, and Pentax camera systems. Featured on all XPLOR, eVOLV, Rapid, StreakLight, and Studio flash brands by Flashpoint.

This is the One. The crown of Watt-Second output, precision stop-action flash duration, and the Grand-daddy of the R2 Family Legacy.

You know, One Remote to Rule Them All. You know.

## Features

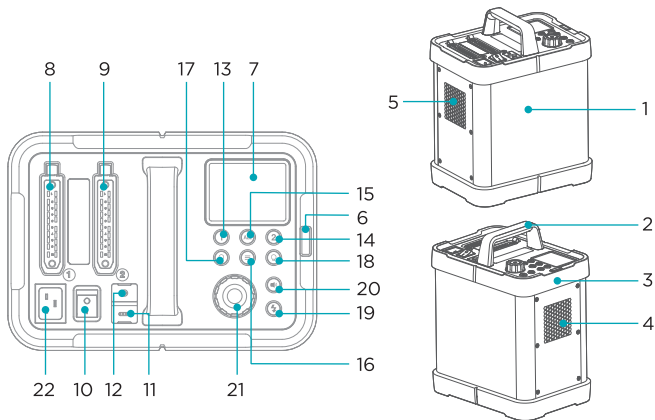
- Incredible 2400ws R2 enabled wireless power pack.
- Flagship R2 blockbuster with two independent flash head ports.
- Optional flashheads include variable 2400ws and fixed 1200ws.
- Two proactive Modes: Manual and Multiflash.
- Ten f-stop range of output – 4.6 to 2,400ws.
- Tenth step value increments for critical exposure precision.
- Flashtubes mount on a movable axis track to seat correctly with any modifier.
- Lightening fast recycle with color stabilization to 75°K.
- Freeze motion with finesse and power to spare.
- Rich color rendition at all flash durations to as low as 1/17,800s.
- Solid build to stand up to years of studio demands under pressure.
- Dedicated fan-cooled heads keep it going under the gun.
- Custom Function for Masking, Delay, and Sequence.
- The brilliant 60W COB LED modeling lamp provides a clear preview of the lighting.
- Bowen's mount compatibility for hundreds of modifiers.
- Flashpoint R2 wireless control for Canon, Sony, Nikon, Fujifilm, Panasonic. Olympus and Pentax TTL camera systems.
- Custom functions only a photog would appreciate.

## Warning

- ⚠ Turn off the flash unit immediately in the event of a malfunction.
- ⚠ Always keep this product dry. Do not use in rain or in damp conditions.
- ⚠ This product contains high-voltage electronic parts. Touching the high-voltage circuit inside it may result in electric shock. Do not disassemble. Should repairs become necessary, this product must be sent to an authorized maintenance center.
- ⚠ Stop using this product if it breaks open due to impact or force. Electric shock may occur if you touch the internal parts.
- ⚠ Do not use the flash unit in the presence of flammable gases, chemicals and ignitable materials. In certain circumstances, these materials may be sensitive to the strong light or electromagnetic interference emitted from this flash unit.
- ⚠ Do not leave or store the flash unit if the ambient temperature reaches over 120°F/50°C (e.g. in a sun-bathed automobile). Electronic parts may be permanently damaged.
- ⚠ Do not insert metal parts into any lighting equipment.
- ⚠ Do not touch the electrical contacts on the strobe or contact them with any conductive materials.
- ⚠ Do not fire the flash directly into the eyes, especially those of babies, within short distances. Visual impairment may occur.

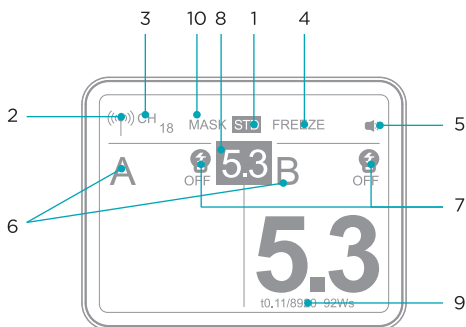
# Names of Parts

## Power Pack:



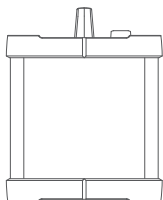
- |   |  |
|---|--|
| 1. Power Pack Body                            | 11. USB Type-C Firmware Upgrade Port         |
| 2. Handle                                     | 12. 3.5mm Sync Cord Jack                     |
| 3. Protect Cover                              | 13. Adjustment Button for No. 1 Flashhead    |
| 4. Fan Inlet                                  | 14. Adjustment Button for No. 2 Flashhead    |
| 5. Fan Outlet                                 | 15. All Adjustment Button for Both Flashhead |
| 6. Optical Sensor Cover                       | 16. < ≡ > Menu Button                        |
| 7. Control Panel                              | 17. < ☉ > Flashhead 1 Model Lamp Button      |
| 8. Power Socket 1 for Flash Head's Power Cord | 18. < ☉ > Flashhead 2 Model Lamp Button      |
| 9. Power Socket 2 for Flash Head's Power Cord | 19. < ⚡ > Test Button/Flash Ready Indicator  |
| 10. Power Switch                              | 20. < 🔊 > Audio Button                       |
|   | 21. Select Dial                              |
|   | 22. Power Socket                             |

## Display



- |   |                   |
|---|-------------------|
| 1. Standard Recycle                     | 6. Group (GR)     |
| 2. Radio Transmission Wireless Shooting | 7. Modeling Lamp  |
| 3. Channel (CH)                         | 8. Power Level    |
| 4. FREEZE Stable Color Temperature      | 9. Flash Duration |
| 5. Audio                                | 10. MASK          |

## Included Accessories



Power Pack



Power Cord

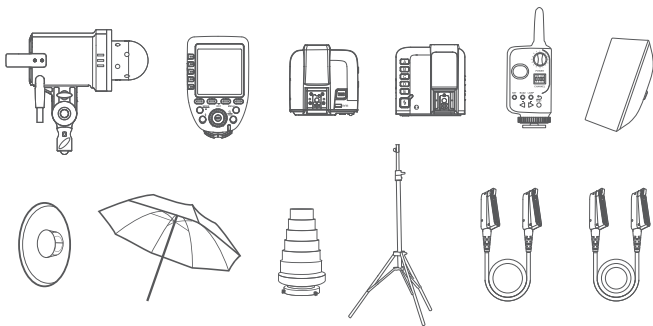


Instruction Manual  
(Including Warranty)



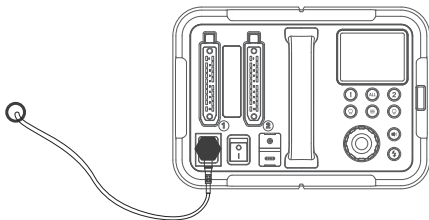
## Optional Accessories

The P2400 power pack can be used in combination with the following optional accessories so as to achieve outstanding lighting: The H2400P and H1200 Flash head, Flashpoint R2 Pro MarkII, R2 Pro, R2 MarkII, and R2 TTL 2.4GHz Transmitters, R2T and R1 433MHz Remotes, softbox, beauty dish, umbrella, snoot, light stand, H2400P 16 foot Head Extension Cord EC2400, H2400P 32 foot Head Extension Cord EC2400L, and the wide range of Bowens mount modifiers available from Glow at **ADORAMA.COM**



## Power Supply

Insert the supplied AC power cord into the XPLOR 2440 Power pack. Plug the cord into an AC socket with sufficient current.

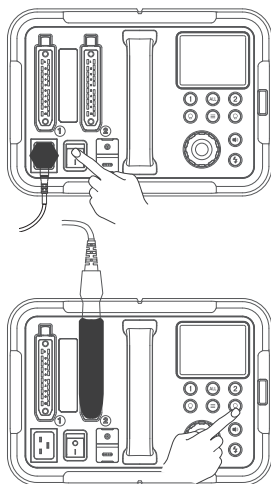


# Operation

## Power On/Off

Slide power switch to "I" to power on;  
Slide power switch to "O" to power off.

**Note:** Unplug the power cord when the power pack is not being used.



## Flash Head Adjustment

When connecting the flash head (optional) into the power socket 1 or 2, short press the corresponding adjustment button 1 or 2 to set parameters. Short press ALL button to adjust the two lights simultaneously.

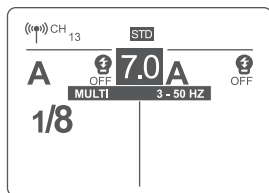
**Special Note:** When the 1200W flash head and the 2400W flash head are plugged into this power pack at same time, the corresponding display screen of the 1200W flash head shows "Not Compatible". In this state, the 1200W modeling lamp cannot work, and the 2400W flash head works normally.

## Modeling Lamp

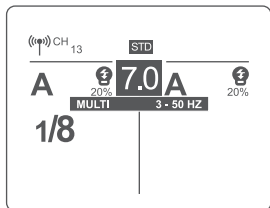
The P2400 Power pack is equipped with a 60W LED modeling lamp which has two continuous lighting modes: Percentage and PROP.

There are three modes: OFF, Percentage (1%-100%) and PROP. Short press the Modeling Lamp Button, and the three modes will be displayed on the LCD panel in sequence.

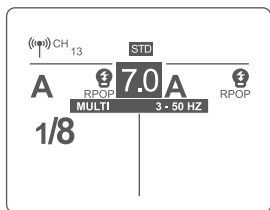
1. **OFF**: the modeling lamp is off.



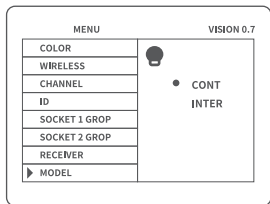
2. **Percentage:** 1%~100% To prevent overheating, the internal fan operates at low speed below 113°F. Above 113°F, the fan shifts to high power.



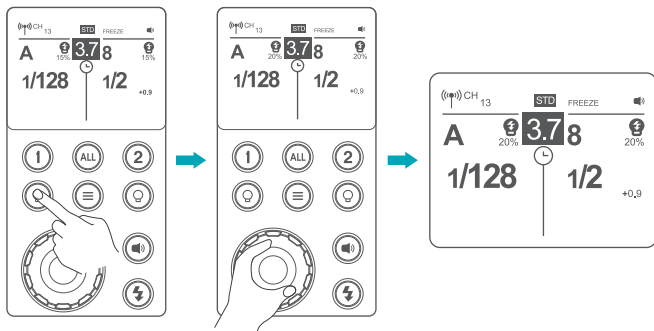
3. **PROP:** The modeling lamp's power changes with the flash's power. The more power the flash has, the brighter the modeling lamp is. To prevent overheating, the internal fan operates at low speed below 113°F. Above 113°F, the fan shifts to high power.



4. Modeling light has continuous and intermittent lamp status functions. Short press **<≡>** to enter the main menu. Turn the select dial to select MODEL, then short press the select dial once. Rotate the select dial to select **"CONT"** or **"INTER"**. Press **<≡>** menu button again to return to the main interface.



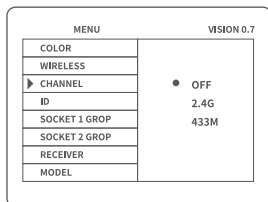
- Long press the modeling lamp button and choose the percentage. Turn the select dial to adjust brightness from 1% to 100%.



## Wireless Flash Mode

With built-in R2 2.4G and 433MHz wireless, P2400 power pack can be set as a receiver. Enter the menu to choose wireless ON or OFF, 2.4G or 433MHz wireless mode.

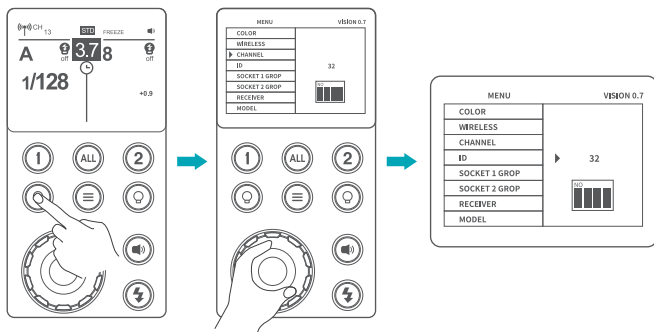
Press the **< ≡ >** button to enter the main menu. Turn the select dial to choose WIRELESS. Then, short press the select dial once and turn it to choose 2.4G or 433MHz mode. Press the **< ≡ >** button to return to the main interface **< ≡ >** displays on the left upper corner of the screen.



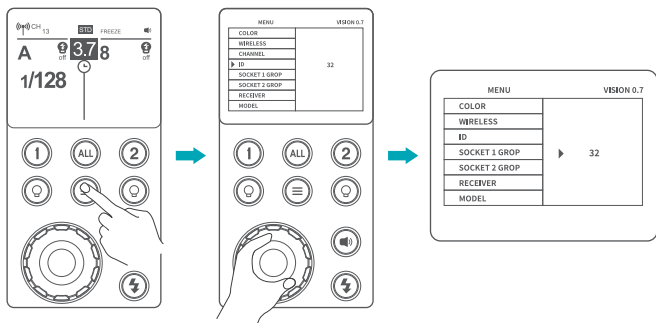
## R2 2.4G Wireless Mode

When choosing 2.4G wireless transmission, R2 2.4GHz wireless remote control operates through Flashpoint R2 Series flash triggers and can be fired by Flashpoint speedlights. The optional devices are available at ADORAMA.COM. If there are other R2 wireless flash systems nearby, you can change the channel (CH), identification number (ID) and group (GR) to prevent signal interference. The channels (CH), identification numbers (ID) and groups (GR) of the transmitter unit and the receive unit must be set to the same values.

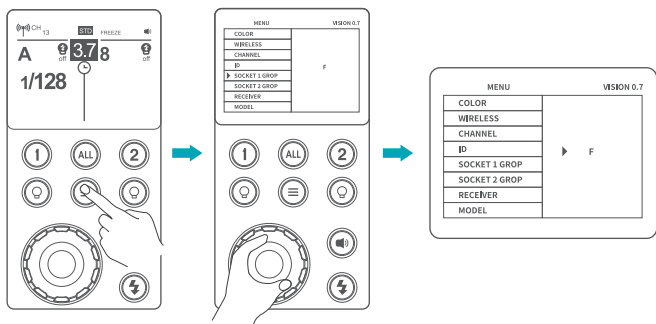
1. Channel (CH) setting: press the **< ≡ >** button to enter menu. Turn the select dial to choose channel. Short press the select dial once and turn it to choose channel from 1 to 32.



2. Identification number (ID) setting: short press the  $\langle \equiv \rangle$  button to enter menu. Turn the select dial to choose ID. Short press the select dial once and turn it to choose ID from OFF and 01 to 99.



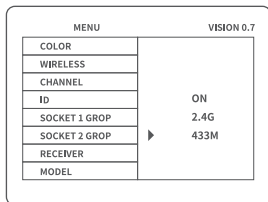
3. Group (GR) setting: short press the  $\langle \equiv \rangle$  button to enter menu. Turn the select dial to choose the corresponding group of socket 1 or socket 2. Then, short press the select dial once and turn it to choose group from 0 to 9 and A to F.



## 433MHz Wireless Mode

When choosing 433MHz wireless transmission, Flashpoint R1 Commander Transmitter remote control (optional) is needed. Set the channels and groups of remote control to the same with the power pack's.

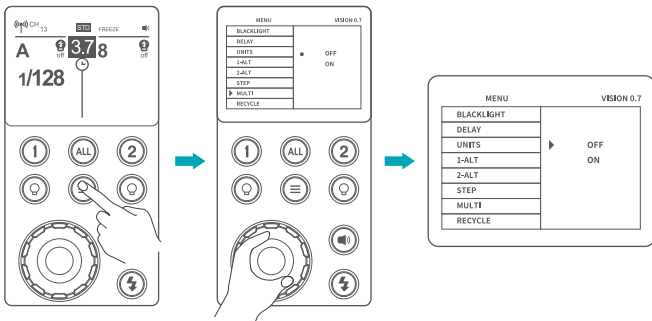
To get more using details of remote control, please refer to Flashpoint R1 Commander Transmitter instruction manual.



## Flash Mode - M: Manual Flash

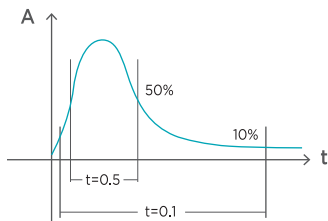
The flash output is adjustable from 1.0 power to 10 power in 0.1 step increments. To obtain a correct flash exposure, use a hand-held flash meter to determine the required flash output.

1. Press **<≡>** button to enter the menu. Turn the select dial to choose multi flash. Then, short press the select dial and turn it to choose **“OFF”**. Press the **<≡>** button to back to the main interface.
2. Turn the select dial to set the flash output.



## Display Flash Duration

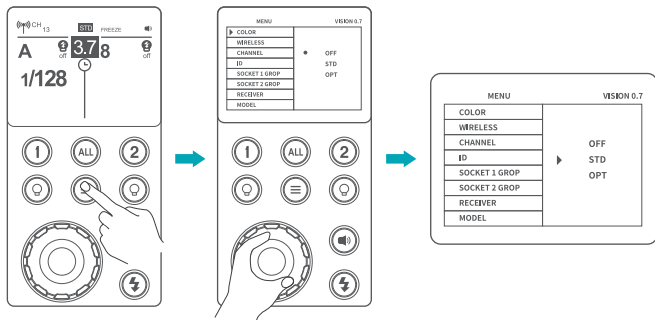
Flash duration refers to the length of time that the flash's intensity reaches the maximum half peak. The half peak is usually expressed as  $t=0.5$ . In order to provide the photographer with more concrete data, this product adopts  $t=0.1$ . The difference between  $t=0.5$  and  $t=0.1$  is shown in the following picture.



## Stable Color Temperature Function

The Stable Color Temperature feature keeps the color temperature changes within  $\pm 75K$  over the entire power range.

Press the  $\leftarrow \equiv \rightarrow$  button to enter the main menu and turn the select dial to choose COLOR temperature mode. Short press the select dial once and turn it to choose OFF, STD or OPT(STD means regular state, and OPT means optimum state). The Flash Ready Indicator  $\leftarrow \text{⚡} \rightarrow$  will blink (the Audio tone will sound). Press the Test Button to discharge, and the flash can be used as normal in the Stable Color Temperature mode.





## Flash Mode - Multi: Stroboscopic Flash

MULTI, or stroboscopic flash, is when a rapid series of flashes are fired. MULTI can be used to capture a multiple images of a moving subject in a single photograph. You can set the firing frequency (number of flashes per sec. expressed as Hz), the number of flashes, and the flash output.

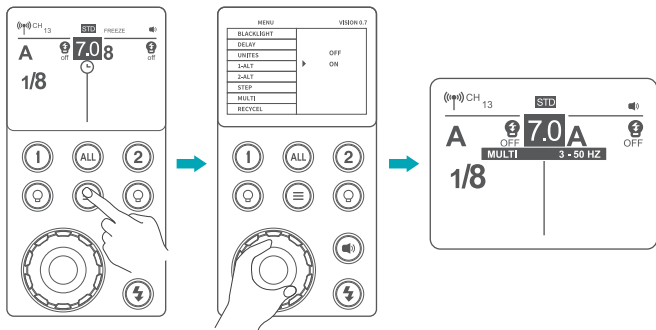
1. Press **<≡>** to enter the menu and turn the select dial to choose MULTI flash. Then, short press the select dial and turn it to choose ON. Press the **<≡>** button to return to the main interface.
2. Set the flash frequency and flash times.
  - Press the select dial to choose flash times. Turn the Select Dial to set the number.
  - Press the select dial to choose flash frequency. Turn the Select Dial to set the number.
  - After you finish the setting, press the select dial to confirm.

## Calculating the Shutter Speed

During stroboscopic flash, the shutter remains open until the firing stops. Use the formula below to calculate the shutter speed and set it with the camera.

### Number of Flashes / Flash Frequency = Shutter Speed

For example, if the number of flashes is 10 and the firing frequency is 5Hz, the shutter speed should be at least 2 seconds.





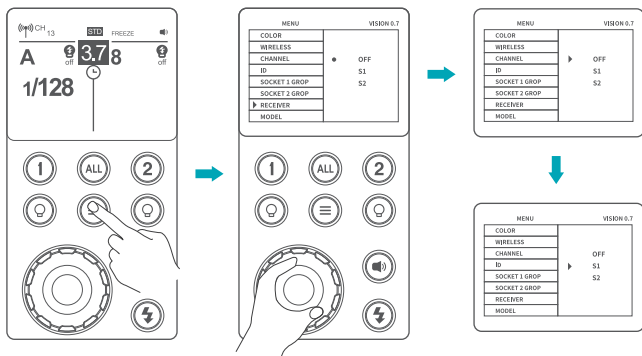
- Stroboscopic flash is most effective with a highly reflective subject against a dark background.
- Using a tripod and a remote control is recommended.
- A flash output of 9.0 and 10 cannot be set for stroboscopic flash.
- Stroboscopic flash can be used with “**BULB**”.  
If the number of flashes is displayed as “--”, the firing will continue until the shutter closes or the battery is exhausted.
- The number of flashes will be limited as shown by the following table.

## Maximum Stroboscopic Flashes:

Flash Output \ Hz	1	2	3	4	5	6-7	8-9	10	11	12-14	15-19	20-50	60-99
1/4	7	6	5	4	3	3	3	2	2	2	2	2	2
1/8	20	15	12	10	8	6	5	4	4	4	4	4	4
1/16	30	30	30	20	20	20	10	8	8	8	8	8	8
1/32	60	60	60	50	50	40	30	20	20	20	18	16	12
1/64	90	90	90	80	80	70	60	50	40	40	35	30	20
1/128	100	100	100	100	100	90	80	70	70	60	50	40	40
1/256	100	100	100	100	100	90	80	70	70	60	50	40	40
1/512	100	100	100	100	100	90	80	70	70	60	50	40	40

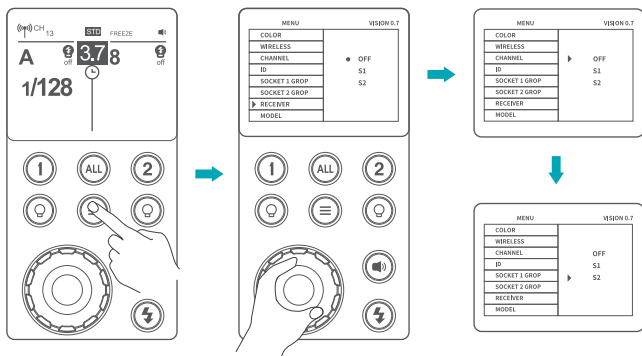
## Optic S1 Secondary Unit Setting

Press the **<≡>** button to enter menu and turn the select dial to choose optical flash. Then, short press the select dial and choose S1 function, so that this flash can function as an optic S1 secondary flash with optic sensor. With this function, the flash will fire synchronously when the main flash fires, the same effect as that by the use of radio triggers. This helps create strobist multiple flash lighting.



## Optic S2 Secondary Unit Setting

Press the  $\triangleleft \equiv \triangleright$  button to enter menu and turn the select dial to choose optical flash. Then, short press the select dial and choose S2 function, so that this flash can also function as an optic S2 secondary flash with optic sensor. This is useful when cameras have pre-flash function. With this function, the flash will ignore a single “preflash” from the main flash and will only fire in response to the second, actual flash from the main unit.



## Setting Custom Functions

1. Press the **<≡>** button to enter the menu. Turn the select dial to choose custom functions.
2. Short press the select dial and turn it to choose the corresponding functions.
3. Short press the select dial again or short press the **<≡>** button to return to the main interface.

MENU Custom Function Settings			
Custom Functions	Settings	Settings & Descriptions	Restrictions
Color Temperature	Off	Off	
	On	On	Stable color temperature mode, changes within $\pm 75K$
Wireless	Off	Off	
	2.4G	2.4G Wireless	
	433MHz	433MHz Wireless	
Channel	1-32	Choose any figure from 1 to 32	
Group of Socket 1 Group of Socket 2	0-9/A,B,C,D,E,F	Choose one from 0-9/A,B,C,D,E,F	Choose group of socket 1
			Choose group of socket 2
Optical	Off	Off	
	S1	S1 Mode	
	S2	S2 Mode	
Modeling Lamp	Continuous	Always ON	
	Flash off	Off after finishing the flash recycle	
Backlight	-3-0-3	7 levels	

MENU Custom Function Settings			
Custom Functions	Settings	Settings & Descriptions	Restrictions
Modeling Lamp Sleep	Off	Off	
	30 min.	Auto power off after 30 minutes of no operation	
	60 min.	Auto power off after 60 minutes of no operation	
	120 min.	Auto power off after 120 minutes of no operation	
Delay Flash	Off	Off	
	0.01-30s	Can be set as second-curtain sync	
Mask Setting of Socket	2 Mask		
	3 Ranking		
	4 Ranking		
1 Ranking 2 Ranking	Off		
	1,2		
Identification Number	Off	Off	Wireless mode
	01-99	Choose any figure from 01 to 99	
Increment	2.0	Display in the form of decimal	
	1/128	Display in the form of fraction	
Multi Flash	Off	Off Multi Flash	
	On	On Multi Flash	
Recycle	Standard Recycle	Within 4 seconds in 110V standard recycling mode, within 2 seconds in 220V standard recycling mode	
	Fastest Recycle	Within 2 seconds in 110V fastest recycling mode, within 1 second in 220V fastest recycling mode, and fastest up to 0.7s	
Language	ENGLISH		
	Chinese (Simplified)		
Reset	No		
	Yes	Reset to default	
Order	16976	Record flash times	

## Sync Triggering



The Sync Cord Jack is a  $\Phi 3.5\text{mm}$  plug. Insert a trigger plug and the flash fires synchronously with the camera shutter. To control the flash wirelessly, you need to insert the receive end of flash trigger into the Wireless Control Port on the flash and insert the transmit end into the camera hot shoe. Settings made on the hotshoe-mounted transmit and receive ends will be wirelessly communicated to the flash. Then you can press the camera shutter release button to trigger the flash. You can also hold the transmit end at hand to control your off-camera flash. The Sync Cord Jack is a  $\Phi 3.5\text{mm}$  plug. Insert a trigger plug and the flash will fire synchronously with the camera shutter.



For full instructions on the use of flash trigger, see its user manual.

## Protection Function

### 1. Over-Temperature Protection

The inner over-temperature protection function activates when firing more than 200 continuous flashes in fast succession at 1/1 full power. The symbol  will be displayed. A slower recycle time indicates the need to allow a rest time of about 5 minutes. The flash unit will then return to normal and the  will disappear.

### 2. Other Protections

The system provides real-time protection to secure the device and your safety. The following lists prompts for your reference:

Prompts on LCD Panel	Meaning
E1	A failure prevents the flash from proper operation. That the flash cannot fire. Please restart the flash unit. If the problem still exists, please send this product to a maintenance center.
E3	The voltage on two outlets of the flash tube is too high. Please send this product to a maintenance center.
E6	Flash fan failure.
E9	There are some errors during the upgrading process. Restart the installation using the correct firmware upgrades method.

## Technical Data

Model	Flashpoint XPLORE2400 Pro Power
Maxi. Power	2400WS
Flash Duration	Min. $\approx 1/17800s$
Power Adjustment	1.0-10 (1/256-1/1) 10 levels adjust, and each level in 0.1 increments
Stable Color Temperature	Change within $\pm 75K$ during the entire range
Flash Mode	Manual flash
	Multi flash
Stroboscopic Flash	Provided (up to 100 times, 100Hz)
Delay Flash	0.01-30 seconds
Mask	√
Fan	√
Beeper	√
Modeling Lamp(LED) Power	60W
Optic Slave Flash	S1/S2 Secondary Unit Setting
Flash Duration Indication	√
Display	3.5 inch color screen
<b>• R2 2.4G Wireless Transmission</b>	
Wireless Function	Receive, Off
Controllable Receive Groups	16 (0 - 9, A - F)
Transmission Range (approx.)	328ft / 100m
Channels	32 (1-32)
Wireless ID	99 (01-99)
<b>• 433MHz Wireless Transmission</b>	
Wireless Function	Auxiliary, Off
Controllable Receive Groups	16 (0 - 9, A - F)
Transmission Range (approx.)	98ft / 30m
Channels	32 (1-32)
<b>• Power Supply</b>	
Power Supply	AC Power Supply
Recycle Time	fastest recycling time $\approx 0.7s$
<b>• Sync Triggering Mode</b>	3.5mm sync line
<b>• Dimensions</b>	
Dimension	13 x 11.3 x 8 in / 330 x 287 x 202 mm
Net Weight	24.25 lb / 11 kg

## Firmware Upgrade

This flash supports firmware upgrade through the USB Type-C port. Update information will be released on our official website.



An USB-C cable is not included in this product. Use a Type-C USB cable to link to your computer.

- The firmware upgrade requires Flashpoint F3 interface software. Download and install the "Flashpoint F3 firmware upgrade software" before upgrading. Then, choose the related firmware file.

## Maintenance

- Shut down the device immediately should abnormal operation be detected.
- Avoid sudden impacts. Maintenance of the device must be performed by our authorized maintenance department which can provide original accessories.
- This product, except consumables e.g. flash tube, is supported with a one-year warranty.
- Unauthorized service will void the warranty. Keep the unit clean and dust-free. Changes made to the specifications or designs may not be reflected in this manual.



## FCC Statement

This device complies with part 15 of the FCC Rules. Operation is subject to the following two conditions:

(1) This device may not cause harmful interference, and (2) this device must accept any interference received, including interference that may cause undesired operation.

**Note:** This equipment has been tested and found to comply with the limits for a Class B digital device, pursuant to part 15 of the FCC Rules. These limits are designed to provide reasonable protection against harmful interference in a residential installation. This equipment generates uses and can radiate radio frequency energy and, if not installed and used in accordance with the instructions, may cause harmful interference to radio communications. However, there is no guarantee that interference will not occur in a particular installation. If this equipment does cause harmful interference to radio or television reception, which can be determined by turning the equipment off and on, the user is encouraged to try to correct the interference by one or more of the following measures:

- Reorient or relocate the receiving antenna.
- Increase the separation between the equipment and receiver.
- Connect the equipment into an outlet on a circuit different from that to which the receiver is connected.
- Consult the dealer or an experienced radio/TV technician for help.

## One Year Flashpoint Limited Warranty

Flashpoint warrants to the original purchaser that your Flashpoint R2 PRO C be free from defects in material and workmanship for the period of one (1) year from the date of purchase (or delivery as may be required in certain jurisdictions), or thirty (30) days after replacement, whichever comes later.

Flashpoint's entire liability and your exclusive remedy for any breach of warranty shall be, at Flashpoint's option, to repair or replace the hardware, provided that the hardware is returned to the point of purchase or such other place as Flashpoint may direct with a copy of the sales receipt or dated itemized receipt. Flashpoint may, at its option, replace your product, offer to provide a functionally equivalent product, or repair any product with new, refurbished or used parts as long as such parts are in compliance with the product's technical specifications. Any replacement hardware product will be warranted for the remainder of the original warranty period or thirty (30) days, whichever is longer, or for any additional period of time that may be applicable in your jurisdiction. If the product has been discontinued, the warranty provider reserves the right to replace it with a model of equivalent quality and function.

This warranty does not cover problems or damage resulting from accident, abuse, misapplication, or any unauthorized repair, modification or disassembly, improper operation or maintenance, normal wear and tear, or usage not in accordance with product instructions or connection to improper voltage supply, use of consumables, such as replacement batteries, not supplied by Flashpoint, except where such restriction is prohibited by applicable law.

Except where prohibited by applicable law, this warranty is nontransferable and is limited to the original purchaser and the country in which the product was purchased. This warranty gives you specific legal rights, and you may also have other rights, including a longer warranty duration that may vary under local laws.

To start a warranty claim contact the Flashpoint Customer Service Department to obtain a return merchandise authorization ("RMA") number, and return the defective product to Flashpoint, along with the RMA number and proof of purchase.

## Question about our product line? Need Product Support?

We are proud of our products and celebrate our customers.  
We are with you, from product selection to everyday use.  
Be secure with your purchase and reach us as you need.



212-647-9300



brands@adorama.com



Adorama Brands,  
42 West 18th Street,  
New York, NY 10011

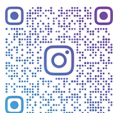
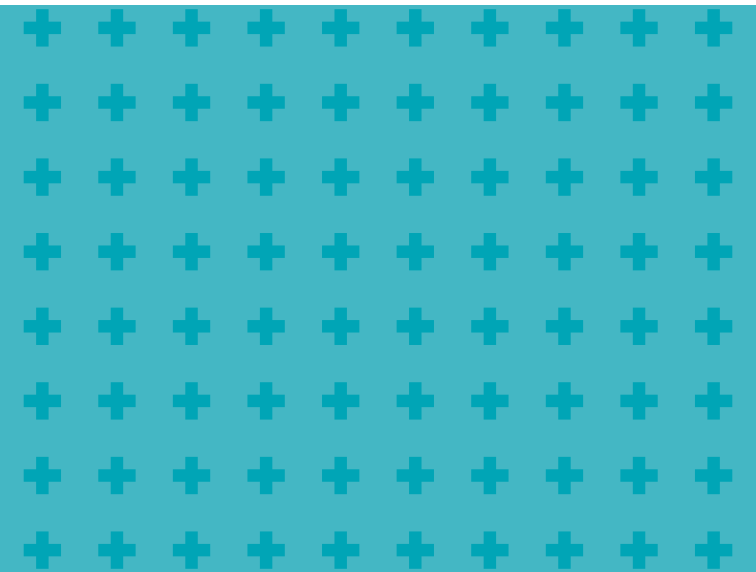
You can always contact us at BRANDS@ADORAMA.COM for personal technical support.

Our website contains a wide range of Support and FAQ pages with valuable technical assistance.

Flashpoint is a registered trademark of ADORAMA CAMERA.

© 2021 Adorama Camera, Corp.

All Rights Reserved.



FLASHPOINTLIGHTING

Scan to follow our  
official instagram

**WWW.FLASHPOINTLIGHTING.COM**