

FP FLASHPOINT



Blast Pack

FPPPBP960

Thank You for Choosing Flashpoint!

The Flashpoint Blast Pack is a fully functioning power source for your shoe mount flash needs. Besides powering the Flashpoint Streaklight, the Blast Pack can power professional speedlights from most brands, including Canon, Nikon, Metz, and (of course) Flashpoint. Simply choose the appropriate cord for the speedlight manufacturer, and the Blast Pack will provide the correct power for speedy recycle times and longer shooting time. Using the Blast Pack, most professional speedlights can be powered to provide a 1-1.5 second FULL POWER recycle, consistently through the life of the battery, which is rated for up to 1800 full power shots.

The Blast Pack can independently cycle 2 devices with its 2 power ports, or the ports can be combined to cut down even more dramatically on recycle time using the accessory Twin Power Adapter. The convenient belt clip and included neoprene strap make mounting or carrying the blast pack comfortable and secure. The battery status indicator keeps the photographer apprised of the remaining power.

The power cell and the pack are 2 independent parts, allowing the cell to be charged and replaced separate from the battery connection and mount. This allows for quick swapping the power cell during use, and the ability to compactly transport multiple power cells and charge them while continuing to photograph.

If you have any questions or concerns, please feel free to contact us at Brands@Adorama.com

For Your Safety

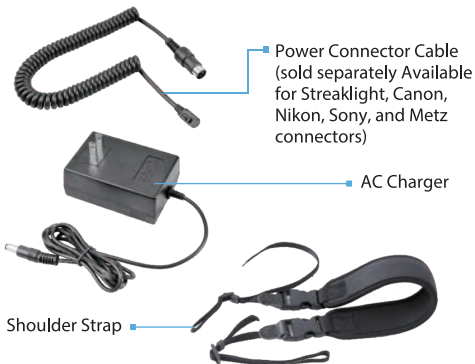
- Always keep this product dry. Do not use in rain or in damp conditions.
- Do not use any power supply other than the included one to charge the battery.
- Do not charge the battery for more than 12 hours
- This product contains high-voltage electronic parts. Touching the high-voltage circuit inside it may result in electric shock. Do not disassemble. Should repairs become necessary, this product must be sent to an authorized maintenance center.
- Stop using this product if it breaks open due to internal shifting, falling or strong impact. STRONG electric shock may occur if you touch the components inside it. You might DIE. Don't risk it. Reincarnation is not covered by the warranty
- Do not use the flash unit in the presence of flammable gases, chemicals and other similar materials. In certain circumstances, these materials may be sensitive to the strong light emitting from this flash unit and fire may result. A whole new meaning to "Flashpoint".
- Do not leave or store the battery if the ambient temperature reads over 50°C (e.g. in automobile in the sun). Otherwise the electronic parts may be damaged.
- Do not insert metal parts into any equipment
- Do not touch the electrical contacts on the flash or battery or contact them with any conductive materials
- Do not lick the battery contacts

- The flash has an over-heat protection circuit, rapid continuous firing will cause the flash to slow operation and trigger a "cool down" period. After this period, the flash will resume normal operation. You may also reboot the flash by cycling the power off and then on.
- Do not use selective coloring
- Do not use the flash to support other equipment. For example, do not lift your camera by the flash
- The power cell should slide smoothly into the battery. If it does not, remove it, check alignment, and check for obstructions. Do not force the battery
- In case of abnormal function, sparks, excessive heat, flames or smoke, immediately power off the unit and disconnect the battery if safely possible. Have it checked by an authorized technician

Product Layout



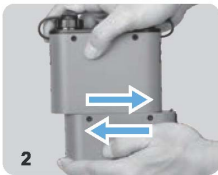
Accessories



Connecting/Disconnecting Battery Chamber

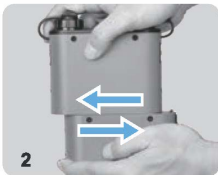
Loading:

1. Clasp the control unit with the battery chamber;
2. Slide the battery chamber to the left until it locks into place with a "click".



Unloading:

1. Slide the battery chamber lock downwards;
2. Slide the battery chamber to the right.



Battery Charging

Insert one end of the AC charger into an AC socket (100-240V) and the other end into the charging port of the power pack. If the charger indicator turns red, the battery is being charged. If the charger indicator turns green, the battery is fully charged. It takes about 2.5 hours to fully charge the battery.

Note:

When used with a speedlight, the speedlight still needs the AA batteries for its basic functions like the screen, control board, and other low voltage components. It only draws power directly to the capacitors from the battery pack.

You can confirm that it's drawing from the pack during use by looking at the pack after a shot, while the flash is recycling the RED light next to the connected port will go out during recycle, and light red when the speedlight is ready to fire.

Operations

(i) Start-up



- Select a connector cable that is compatible with your product.
- Connect the power plug of the connector cable to a socket on of the power pack.




- Insert the terminal of the connector cable into the flash.



- Press the On/Off button, and the LED battery level indicators will illuminate, indicating the power pack is working.



 Note: If this product is used for a speedlight, the speedlight must be installed with batteries that have sufficient power.

(ii) Power-off

- Turn off the power pack by pressing the On/Off touch button.
- Do not turn off the power pack by directly unplugging the connector cable from the power pack.

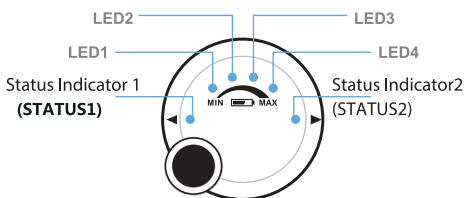
Status Indicators

- Power-off status: There is no LED indicator, and no power output from sockets. Energy consumption of the entire unit is so low that the loss of battery power is negligible.
- Testing battery status: When the connector cable is not inserted into either socket, press the On/Off test button, and only the battery level indicators go on, indicating the power pack is in battery testing mode. Press the On/Off button again or wait for 3 seconds to return to the power-off status.
- Working status: Insert the connector cable into a socket and press the On/Off touch button, and the LED indicators go on, indicating the power pack enters into the working status. Press the On/Off button again to enter the power-off status.

* Automatic Power-off Function: The power pack will be automatically powered off after twelve hours, in case shutdown is missed, preventing long-time power consumption.

LED Indicators

1. Battery Level Indicators: LED1, LED2, LED3, LED4



Battery level \ LED	LED1	LED2	LED3	LED4
Weak	Flicker	OFF	OFF	OFF
Low	ON	OFF	OFF	OFF
Middle	ON	ON	OFF	OFF
To be full	ON	ON	ON	OFF
Full	ON	ON	ON	ON

- Please timely charge the battery when low battery is indicated by the LEDs.
- When LED1 is blinking, this product will disable power output; the battery needs immediate charging before it can be used again.

⚠ Note: Please charge the device for use if it falls to start.

2. Status Indicators: STATUS1, STATUS2

- STATUS1/STATUS2 is off during flash recycle and will go on when the flash is fully recycled.
- STATUS1/STATUS2 LED blinking (blinking cycle: 1Hz), indicates that the flash has been overused. In case of excessively high temperature inside the power pack, the overheat protection will be enabled with the power output suspended. Please wait for 10 minutes before using it again.

Technical Data

Battery pack	Lithium battery-11.1V/4500mAH
Battery charging time	Approx. 2.5 hours
Speedlight recycle time	Approx. 1s (at full power)
Number of Flashes (Speedlight)	Approx. 1800 times (for one Canon 580EX2 at full power)
Dimension	159*133.5*49.2MM
Weight	510G