

FLASHPOINT



FPTPP712

DELUXE TELEPOLE SUPPORT SYSTEM

BLACK (PAIR)

We sincerely extend our heartfelt gratitude to you for selecting the unparalleled **FLASHPOINT** Deluxe Telepole Support System. In your pursuit of excellence, we stand by your side with a product that is not just remarkable but transcends the ordinary.

Your journey begins now. Unleash the full potential of your Flashpoint Deluxe Telepole Support System and embark on a thrilling adventure where safety, precision, and excellence are your constant companions. Thank you for entrusting us with your support, and we can't wait to witness the amazing feats you will accomplish with your new tool at your side.

Our confidence in the enduring performance of the Telepole Support System is unwavering, and we trust that it will faithfully support your creative endeavors for many years.

Unpacking and Inspection:

Prepare for an exceptional experience by commencing with the unpacking and inspection of your shipment. This pivotal step ensures that your system is primed for peak performance and assures that no compromise is made on the quality of your equipment.

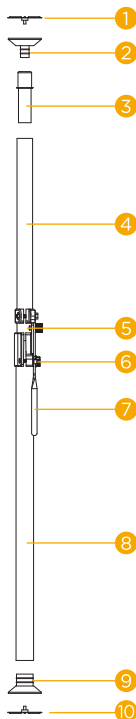
- 1. Unveiling the Contents:** With anticipation, open the shipping carton to reveal the contents within. In your pursuit of excellence, each component is a vital piece of the puzzle. Take a moment to appreciate the attention to detail that has gone into curating your package.
- 2. Comprehensive Verification:** Diligently verify that all the equipment essential for operating the system is present and accounted for. It's not just about having the right tools; it's about having the right tools intact. We're committed to your satisfaction, and this step ensures that no vital element is overlooked.
- 3. Scrutinizing Transport Effects:** In your quest for perfection, examine each item for any signs of transportation-induced damage. Our journey to you is not without its challenges, but your equipment should arrive unscathed and ready to perform flawlessly. Should you spot any damage, it's imperative to act promptly.

This meticulous Unpacking and Inspection process guarantees that your system's journey starts on the right foot, and your quest for excellence begins with confidence. Thank you for choosing us as your partner on this journey, and rest assured, we're with you every step of the way.

Introduction

Introducing the "Flashpoint Deluxe Telepole Support System" - a game-changer for your creative pursuits. Elevate your projects to new heights with this top-tier support system, offering unparalleled stability, precision, and reliability. Your creative journey just found its perfect partner.

- 1 10 Rubber Pad (White only)
- 2 Top Rubber Cover (Black or White)
- 3 Spring-loaded cushion
- 4 Upper tube 40mm (1-9/16")
- 5 Extension-adjusted knob
- 6 Safety locking latch
- 7 Handle
- 8 Bottom tube 45mm (1-3/4")
- 9 Bottom Rubber Cover (Black or White)



Cautions

- 1. Ensure Proper Support:** The safe operation of the Telepole necessitates secure placement between two rigid support surfaces. Confirm that you are engaging a solid ceiling, avoiding unsupported ceiling panels or tiles. If a secure ceiling is unavailable, employ a Telepole base for stability.
- 2. Verify Stability:** Always check the stability of your setup after attaching or removing lights, paper drives, or any other items. Ensuring stability is a key safety measure that should never be overlooked.
- 3. Latch Poles Securely:** Please note that the Telepoles are not air cushioned. Before attaching fixtures or backgrounds, ensure that the poles are securely latched. It's crucial to remove all accessories and backgrounds before disassembling the Telepoles to prevent accidents.
- 4. Adhere to Load Limits:** Respect the specified maximum load limits to prevent overloading. Do not exceed 55 lbs. (25 kg) on any single Telepole and adhere to the weight limits indicated in the provided diagram for crossbars.
- 5. Temperature Considerations:** Operate the Telepole within the temperature range of -20°F (-30°C) to 140°F (60°C). Keep the Telepole dry, and if it becomes wet, ensure thorough drying. Avoid exposure to saltwater and clean the Telepole using mild detergent and a soft cloth to maintain its optimal condition.

Your adherence to these guidelines is crucial for a safe and productive experience with the Telepole Support System.

Operating Instructions

Step 1:

Please take a moment to ensure that the top and bottom rubber covers are properly attached. These rubber covers, meticulously designed to offer protection and stability, are essential components that play a pivotal role in preserving the integrity of your equipment and preventing any potential damage during operation.

By conscientiously confirming the secure placement of these covers, you contribute to the longevity, safety, and overall functionality of your Telepole Support System.

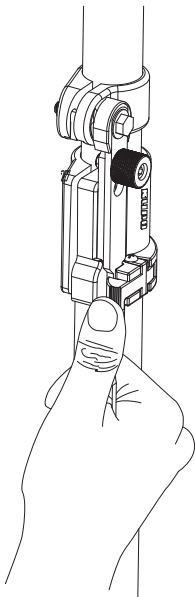


Step 2:

When setting up the Telepole, carefully select your desired location, ensuring the presence of a stable foundation below and a dependable ceiling overhead. It is imperative that the surface beneath the Telepole provides a firm and secure footing, while the ceiling above should be sturdy and capable of supporting the system safely.

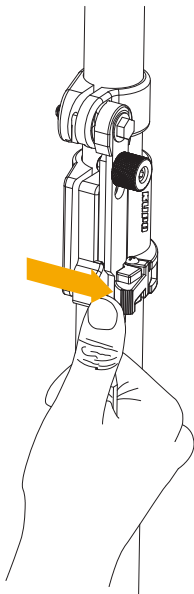
Step 3:

Grip the handle firmly while positioning your thumb on the locking latch. This secure hold allows you to maintain control over the Telepole Support System and conveniently access the locking mechanism. Ensuring a proper grip with your thumb ready on the locking latch enhances the ease and precision of operating your equipment.



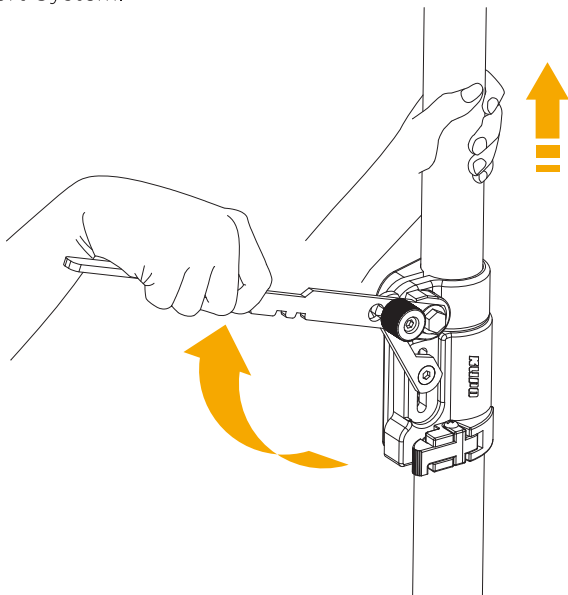
Step 4:

Effortlessly engage the locking latch by applying upward pressure with your thumb. This intuitive action grants you quick and convenient access to the locking mechanism, simplifying the process of securing your Telepole Support System. By pushing the latch upward with your thumb, you can swiftly and securely lock the system into place, ensuring stability and reliability during your creative endeavors.



Step 5:

To release the upper tube and adjust it to your desired height against the ceiling, begin by pulling the handle upward. This action disengages the upper tube, allowing you to smoothly elevate it to the preferred height. The handle's design ensures a user-friendly experience, making height adjustments quick and hassle-free, providing you with a seamless setup process for your Telepole Support System.



Adjusting Tension on Telepole

Step 1:

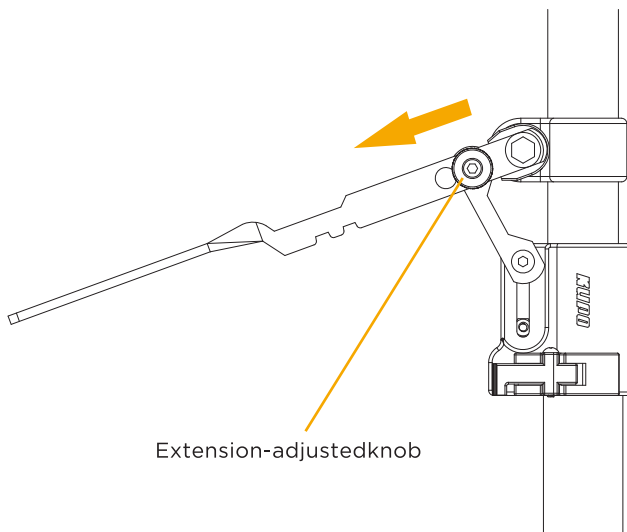
The tension applied by the handle to the upper tube can be customized to your preferences. To adjust this tension, release the locking latch on the handle by pulling it down, and then swing the handle outward. This action allows you to fine-tune the handle's tension, providing you with the flexibility to set it to your desired level of resistance. This feature ensures that the Telepole Support System caters to your specific needs and offers a comfortable and customizable user experience.

Step 2:

To adjust, simply turn the tension knob located on the handle bracket in a counterclockwise direction. This straightforward process allows you to loosen the tension for further customization. By unscrewing the tension knob, you can achieve the desired level of flexibility and ease of operation, tailoring the Telepole Support System to your specific requirements. This user-friendly feature ensures that you can effortlessly fine-tune the system to your liking, providing an optimal and personalized experience. The Telepole Support System meets your specific needs for ease of operation and optimal performance.

Step 3:

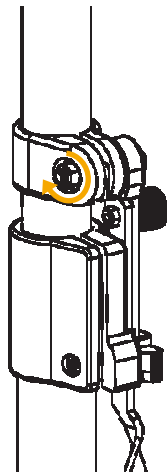
Adjust the tension level by sliding the tension knob to the lower position for increased tension or the upper position for reduced tension on the handle bracket. After achieving the desired tension setting, securely tighten the tension knob, and then return the handle to its locked position. This straightforward procedure allows you to fine-tune the tension according to your preferences, ensuring that the Telepole Support System meets your specific needs for ease of operation and optimal performance.



Step 4:

Should you encounter any slippage of the upper tube during the installation process, you can address this issue by utilizing a socket wrench to securely fasten the nut located at the top of the handle bracket. This simple action ensures that the upper tube remains in place, maintaining the stability and integrity of your setup. By promptly addressing any slippage, you can be confident that the Telepole Support System will continue to provide a reliable and secure foundation for your equipment and creative endeavors.

We express our sincere appreciation for choosing the **FLASHPOINT** Deluxe Telepole Support System as your trusted partner in your creative endeavors. Your pursuit of excellence is our inspiration, and we are honored to be a part of your journey. Should you ever need assistance or have any questions, our dedicated support team is here to help.



Thank you for placing your trust in us. We look forward to witnessing the remarkable feats you will achieve with your new Telepole Support System. Your success is our success, and we are here to support you every step of the way.

One Year Flashpoint Limited Warranty

Flashpoint warrants to the original purchaser that your Flashpoint product shall be free from defects in material and workmanship for the period of one (1) year from the date of purchase (or delivery as may be required in certain jurisdictions), or thirty (30) days after replacement, whichever comes later.

Flashpoint's entire liability and your exclusive remedy for any breach of warranty shall be, at Flashpoint's option, to repair or replace the hardware, provided that the hardware is returned to the point of purchase or such other place as Flashpoint may direct with a copy of the sales receipt or dated itemized receipt. Flashpoint may, at its option, replace your product, offer to provide a functionally equivalent product, or repair any product with new, refurbished or used parts as long as such parts are in compliance with the product's technical specifications. Any replacement hardware product will be warranted for the remainder of the original warranty period or thirty (30) days, whichever is longer, or for any additional period of time that may be applicable in your jurisdiction. If the product has been discontinued, the warranty provider reserves the right to replace it with a model of equivalent quality and function.

This warranty does not cover problems or damage resulting from accident, abuse, misapplication, or any unauthorized repair, modification or disassembly, improper operation or maintenance, normal wear and tear, or usage not in accordance with product instructions or connection to improper voltage supply, use of consumables, such as replacement batteries, not supplied by Flashpoint, except where such restriction is prohibited by applicable law.

Except where prohibited by applicable law, this warranty is nontransferable and is limited to the original purchaser and the country in which the product was purchased.

This warranty gives you specific legal rights, and you may also have other rights, including a longer warranty duration that may vary under local laws.

To start a warranty claim contact the Flashpoint Customer Service Department to obtain a return merchandise authorization (“RMA”) number, and return the defective product to Flashpoint, along with the RMA number and proof of purchase.

Question about our product line? Need Product Support?

We are proud of our products and celebrate our customers. We are with you, from product selection to everyday use. Be secure with your purchase and reach us as you need.

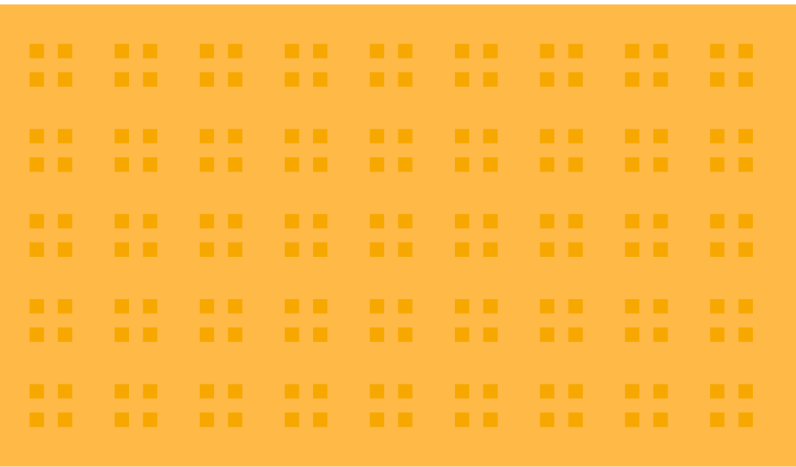
📞 212-647-9300

✉ support@flashpointlighting.com

📍 Flashpoint,
42 West 18th Street,
New York, NY 10011

You can always contact us at BRANDS@ADORAMA.COM for personal technical support. Our website contains a wide range of Support and FAQ pages with valuable technical assistance.

Flashpoint is a registered trademark of ADORAMA CAMERA.
© 2023 Adorama Camera, Corp.
All Rights Reserved.



Scan to follow our official instagram
WWW.FLASHPOINTLIGHTING.COM