



# User Manual

## **R300 Luminic** LED Ring Light





Caution .....	3
Components .....	4
Control & Functions .....	5
Specifications .....	6
 User Guide .....	 7
[1] Getting Started .....	7
[2] Functions .....	7
[3] After Use .....	7
 Dimensions .....	 8
Maintenance .....	9



## CAUTION

## R300 Lumic

### • Always use set voltage. (DC 10-18V)

- All operating instructions must be read and understood before the product is operated. These safety and operating instructions must be kept in safe place for future reference.
- All warnings on the product and in the instructions must be observed closely.
- All operating instructions must be followed.
- Do not use attachments not recommended by the manufacturer. Use of inadequate attachments can result in accidents.
- This product must be operated on a power source specified on the specification label.
- If you are not sure of the type of power supply used in your home, consult your dealer or local power company. For units designed to operate on batteries or another power source, refer to the operating instructions.
- The power cords must be routed properly to prevent people from stepping on them or objects from resting on them. Check the cords from the plugs and product.
- If using other DC adapters instead of the standard adapter provided by the manufacturer, please check the proper load capacity (or current capacity) and use an adapter with stable voltage.
- Do not overload DC outlets or extension cords. Overloading can cause damage or electric shock.
- Never insert an object into the product's vents or openings. High voltage in the product can cause electric shock and/or a short circuit. For the same reason, do not spill water or liquid on the product.
- Do not attempt to service the product yourself. Removing covers can expose you to high voltage and other dangerous conditions. Request a qualified service person to perform servicing.

- If any of the following conditions occurs, unplug the power cord from the DC outlet, and request a qualified service person to perform repairs.

- a. When the power cord or plug is damaged.
- b. When a liquid was spilled on the product or when objects have fallen into the product.
- c. When the product has been exposed to rain or water.
- d. When the product does not operate properly as described in the operating instructions. Do not touch the controls other than those described in the operating instructions. Improper adjustment of controls not described in the instructions can cause damage, which often requires extensive adjustment work by a qualified technician.
- e. When the product has been dropped or damaged.
- f. When the product displays an abnormal condition. Any noticeable abnormality in the product indicates that the product needs servicing.

- In case the product needs replacement parts, make sure that the service person uses replacement parts specified by the manufacturer, or those with the same characteristics and performance as the original parts. Use of unauthorized parts can result in fire, electric shock and/or other danger.

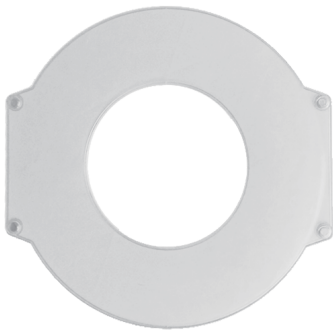
- Upon completion of service or repair work, request the service technician to perform safety checks to ensure that the product is in proper operating condition.



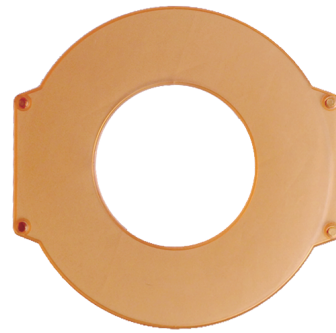
R300 Ring Light



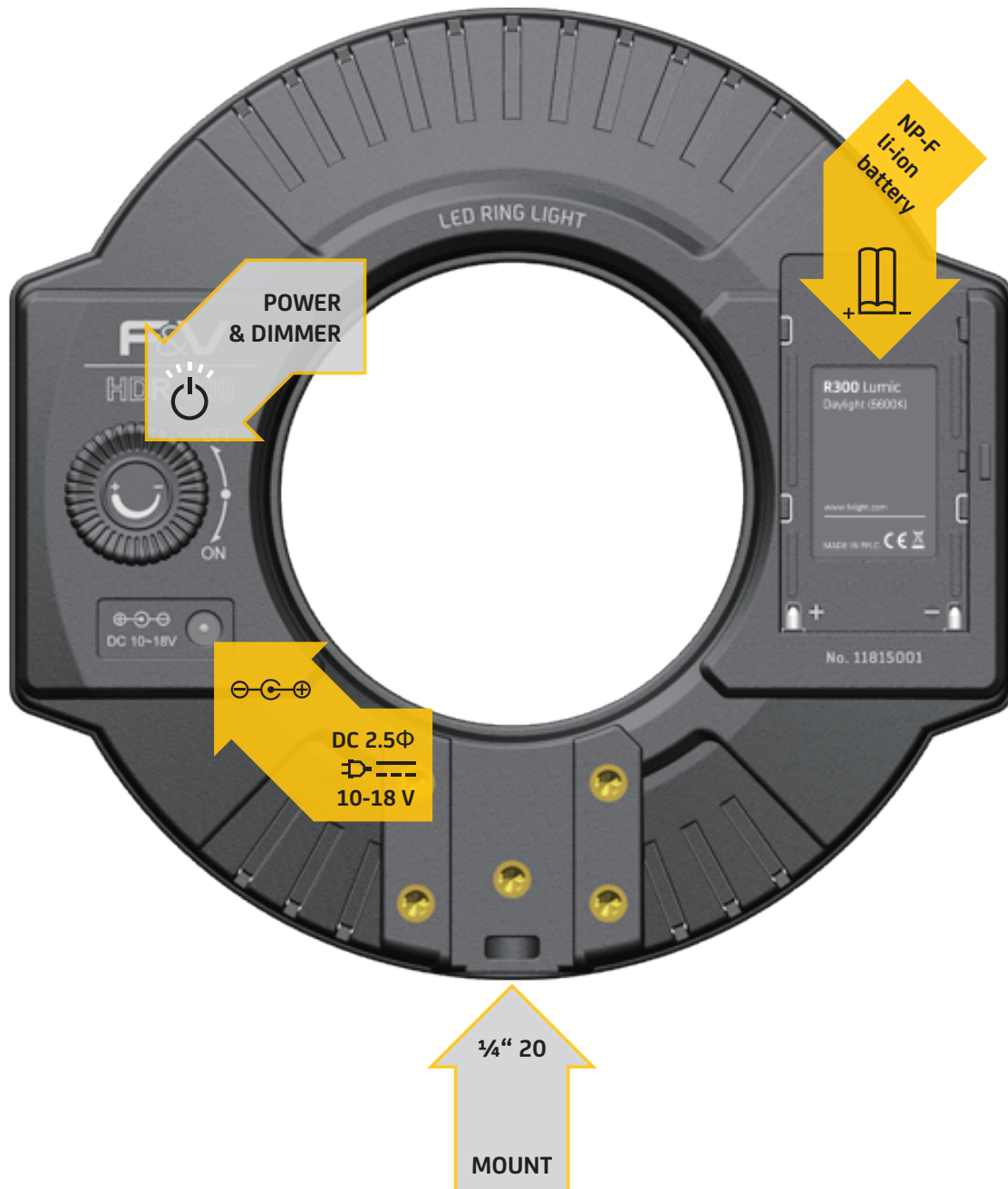
Light-Stand Mount



Frost Diffusion Filter

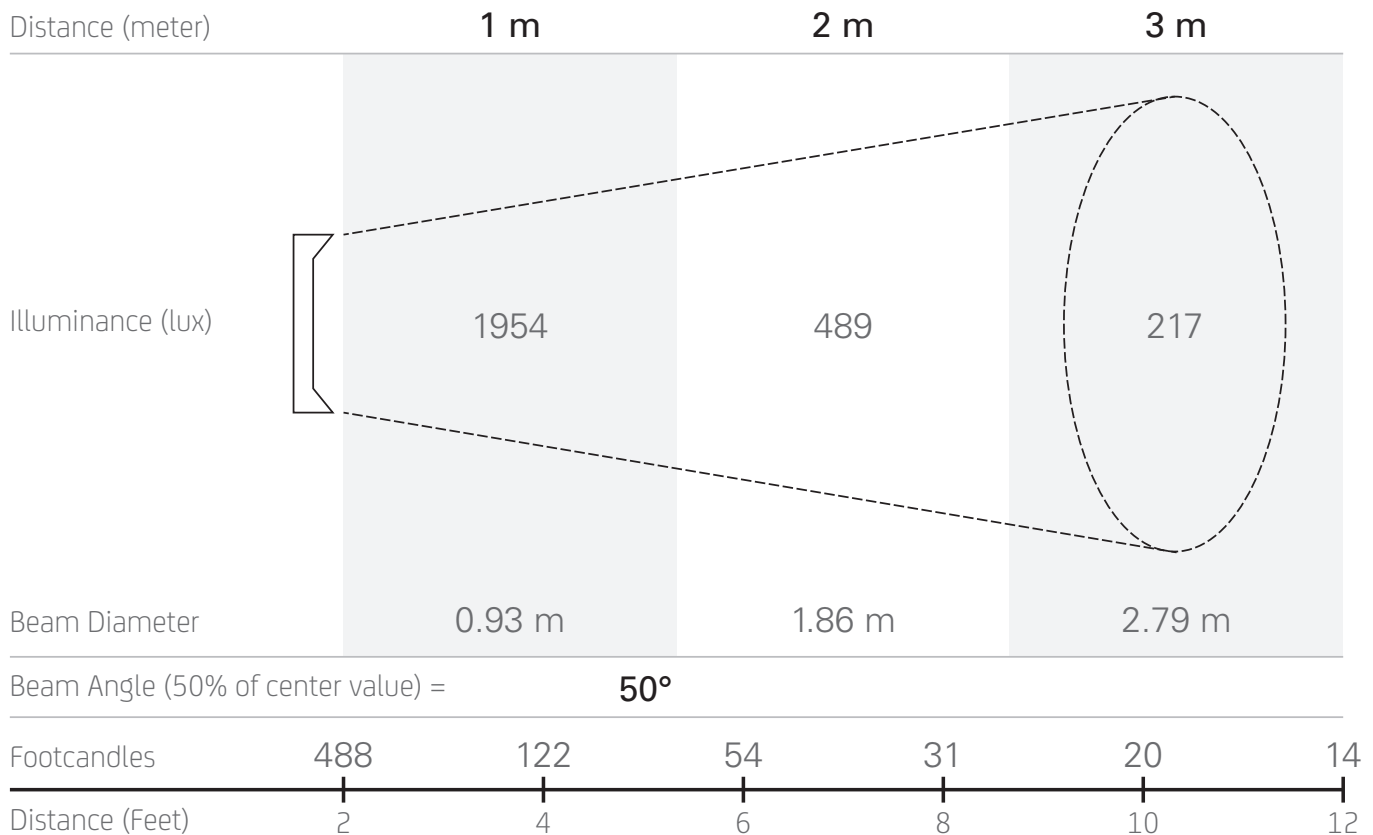


Tungsten Filter



POWER →

FUNCTION →

**R300 Lumic Daylight** (100% 5600K) ●

Item No.	11815001
Correlated Color Temperature	5600K Daylight
Color Rendering Index	85 - 90
Illumination (Lux@1m)	100% ● 1954 lx
Lumen	100% ● 1944 lm
Power Draw	21.18 W Max
Operating Voltage	6 - 18V DC
Nominal Weight	350 g
Dimensions L×W×H	208 × 43 × 202 mm
Power Supply	1 × Sony NP-F Li-ion battery; DC Φ2.5 Jack
Battery Lifetime	78 mins @ 1*4800mAh NP-F750



The specification above may be changed without notice.

## [1] Getting Started

- Setting up the R300 Lumic

The R300 Lumic features a ¼" 20 threading (see page 5 where it is located) to mount it onto lightstands with a ¼" 20 screw. Alternatively the optional 15mm LWS rail mount can be used to attach the ring light to a rail support system.

- Powering options

You can power the R300 Lumic by a NP-F compatible li-ion battery or a power adapter with a 2.5 plug providing 10-18V (see page 5). Compatible battery types are:

NP-F550  
NP-F750  
NP-F770  
NP-F970

## [2] Functions

- Turning the light on and brightness adjustment

To turn the R300 Lumic on turn the Power & Dimmer rotary knob in a clockwise direction. With this movement you also adjust the brightness, increasing it from 0 – 100 % by rotating it clockwise and decreasing it by a counter-clockwise movement.

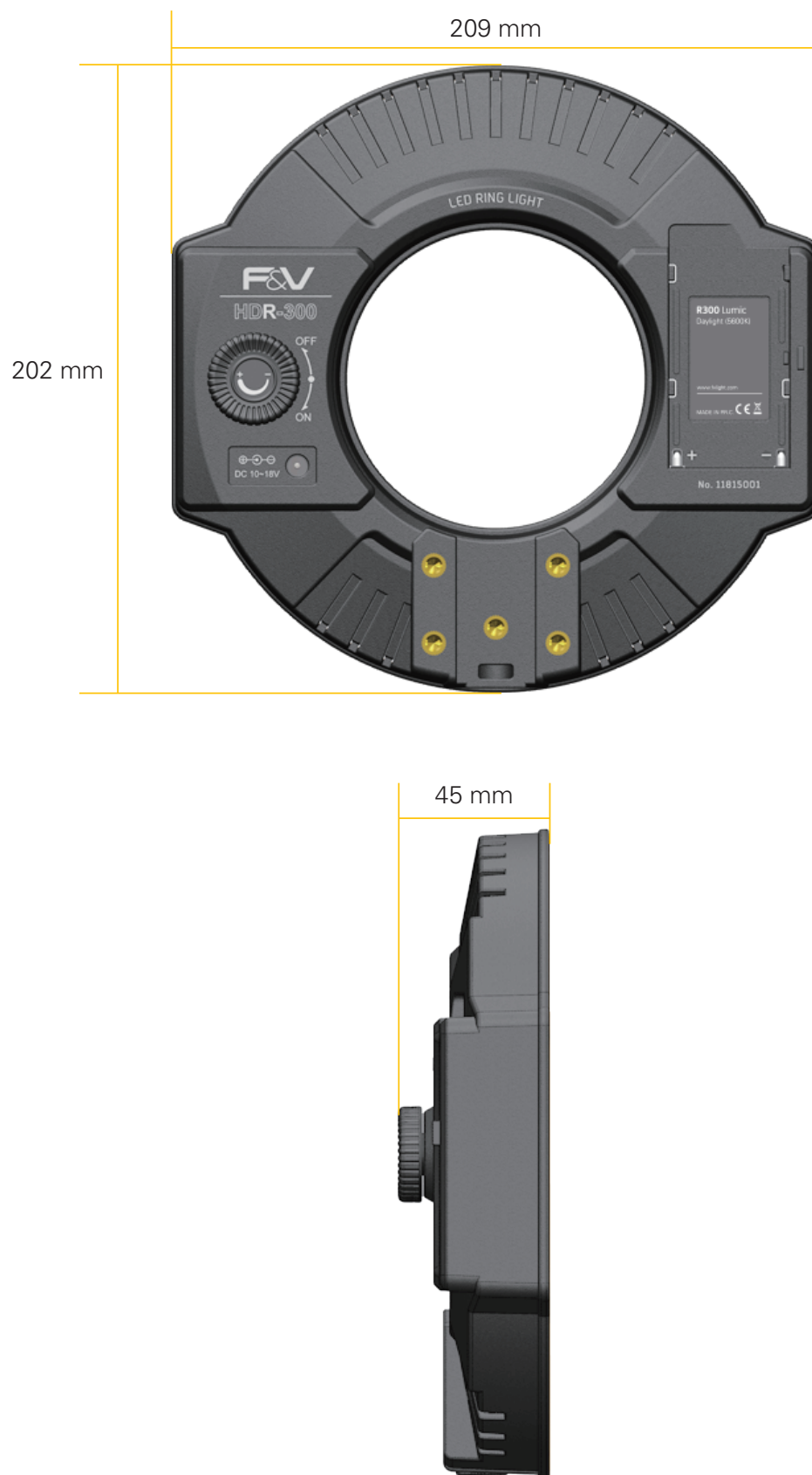
## [3] After Use

- Turning the light off

To turn the light off turn the Power & Dimmer rotary knob in a counter-clockwise direction until you hear a slight clicking sound.

- Storage

When the R300 Lumic is not in use please remove all power sources from it.





- Faceplate Dusting

Dust the unit with a soft cloth or chamois. You may use a slightly damp cloth, but make sure unit is not connected to any power. Dry or abrasive cloths may cause electrostatic charge on the surface, attracting dust particles. Neutralize static electricity by using the recommended cleaning and polishing practice.







F&V Photographic Industry B.V.  
Steenovenweg 5, 5708HN Helmond, Netherlands  
TM & © F&V All rights reserved.

For more information visit: **[fvlight.com](http://fvlight.com)**