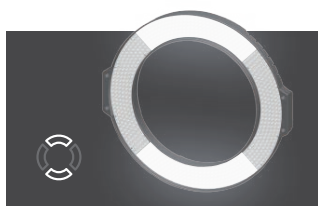


WiFi Module & Optional Accessories

Unlock the full potential of your ring light with our offering of optional accessories. Our WiFi Module for R720 not only gives you the ability to control your R720 by an APP and dedicated remote, but also adds Independent Quadrant Control functionality. Independent Quadrant Control lets you individually control each quadrant's brightness and/or color temperature, allowing for unique catch lights. See optional extra's below...



WiFi App



Independent Quadrant Control

Optional Accessories

Milk Diffusion Filter

for Z720 / R720
Item No.: 11815103



Wifi Module

for R720
Item No.: 10911105



Pro Case

Item No.: 10501105



RS-2 Soft Box

Octagonal
Item No.: 11815206



Dedicated Controller

for WiFi Module
Item No.: 10911201



RB-2 Bracket

for RS-2 soft box
Item No.: 11815234



Rail Mount

15mm LWS & 19mm Studio
Item No.: 11815105



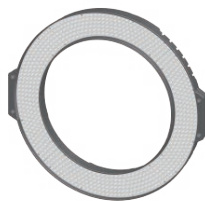
Quick Start Guide



R720 Lumic
Ring Light

- 1 Getting Started
- 2 Functions

What's in the box?



R720 LED Ring Light



Frost Diffusion Filter



Tungsten Filter*
*Only comes with R720 Daylight



5/8" Light Stand Mount (16mm)



Base Case for R720



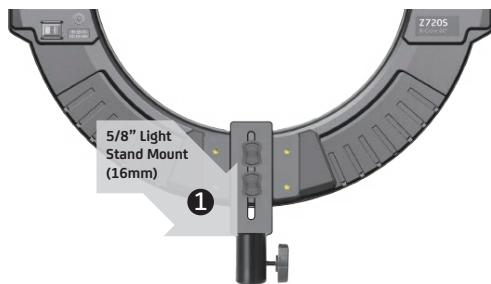
F&V Photographic Industry B.V.
Steenovenweg 5, 5708HN Helmond, Netherlands
TM & © F&V All rights reserved.

For more information visit: fvlight.com

1 Getting Started

1 Mount

5/8" Light Stand Mount (16mm)



2 Power

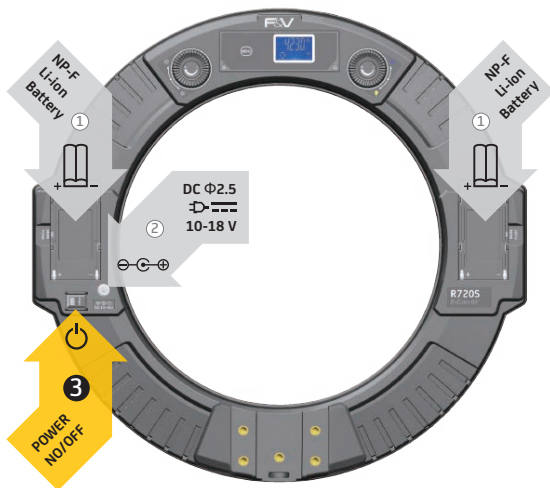
Two power options

- ① NP-F Li-ion battery
- ② DC Φ2.5 6.8-18V

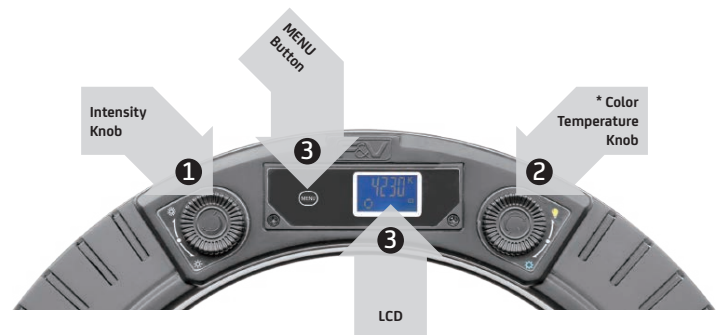
3 Let's do this!

Turn the light ON

- <I> when powering through DC Jack
- <II> when using NP-F batteries



2 Functions



1 Adjust the Intensity

Use <Intensity> knob to adjust the intensity

2 * Adjust the Color Temperature (only the bi-color version)

Use <Color Temperature> knob to adjust the color temperature

3 LCD Display

Each time you press the <MENU> button, the LCD display will change:

View the current intensity

→ * View the current color temperature (only the bi-color version)

→ View the current energy level of your first battery or the AC adapter's efficiency

→ View the energy level of your second battery