



# 8 x 8 Butterfly Frame & Kit

## Welcome!

We are excited that you have selected our Glow Butterfly Frame Kit for inclusion in your creative lighting gear. Explore diffused directional light techniques for portraits, fashion close-ups, beauty, and small product photography, and whenever a soft yet directional light is desired.

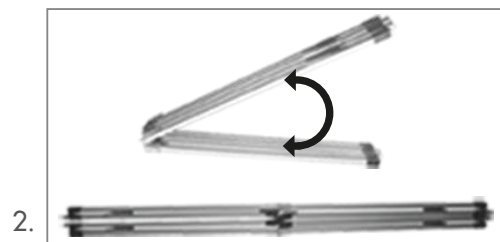
The unique portability of this accessory allows you to take it virtually anywhere, set it up and break it down in minutes, and create a rigid light modifier in any location. Use the Butterfly Frame Kit to turn any light source into flattering studio light. This kit is great for strobes, constant lights, and natural sunlight, and indoor, outdoor, studio, and location work.

Glow for it!

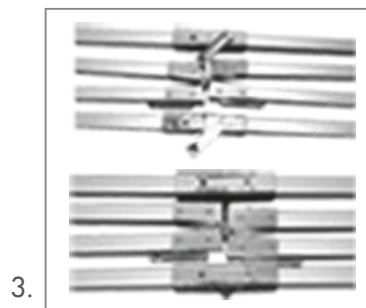
## Instructions:



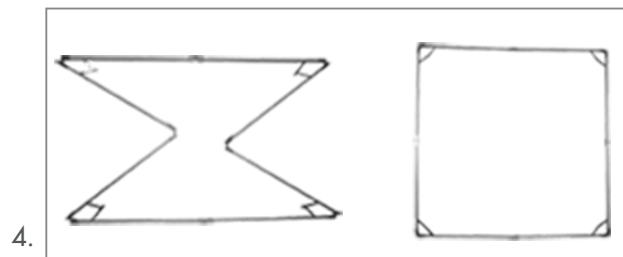
1. Lay out all contents on flat surface



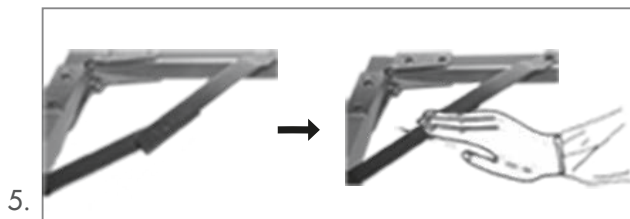
2. Extend the stretchers



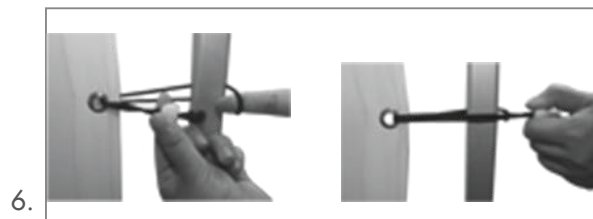
3. Secure joints in position by turning locking dial 180°



4. Extend all 4 stretchers to form a square frame



5. Push each diagonal lock in place to secure 4 corners of the frame



6. Spread diffuser cloth. Stretch cloth by threading an elastic fastener through each eyelet and fasten to frame



7. Set diffuser cloth vertically onto stands