



GRANDBOX PRO USER GUIDE

User Guide for the Following Models:

- **GrandBox Pro 16**
35"/90cm, 47"/120cm, 55"/140cm, 71"/180cm
- **GrandBox 4 Pro Square**
24x24"/60x60cm, 32x32"/80x80cm, 40x40"/100x100cm
- **GrandBox 4 Pro Rectangle**
24x34"/60x85cm, 30x40"/75x100cm, 36x48"/90x120cm
- **GrandBox 4 Pro Strip**
12x36"/30x90cm, 14x60"/35x150cm, 16x48"/40x120cm
- **GrandBox 8 Pro Octa**
32"/80cm, 43"/110cm, 51"/130cm, 60"/150cm
- **GrandBox Pro Focus Bounce Rod**



CE / CSA / ISO 9001 / ISO14001 / RoHS

Thank You for Choosing the Glow GrandBox Pro Softbox.

The unique Glow GrandBox Pro Softbox series is the amazing construction of a parabolic design, supported by external aluminum flex rods; no fragile dowels or 'bones' interfere with the entire silvered interior bowl. The optional Focus Bounce Rod adds customization to the formula, adding up to a no compromise solution you only wished for. The result?

The ideal source for mastering all location situations where quality counts by imitating natural sunlight - even in a sports arena or outdoors on a playing field. The highlight /shadow ratio is optimized with a concentrated focus of illumination from the special bowl reflector, reverse umbrella design. The GrandBox Pro Softbox combines the strength of a key light while acting as an excellent reflector, blending perfectly with additional fill soft lights and is best for the full-length figure, fashion, large group shots, celebrity, lifestyle, and commercial assignments.

The patented construction mechanism is marvelously easy to open and close. The quick setup and convenient portability provides a perfect solution for serious photographers with excellence in lighting on their mind. There is exceptional efficiency in this design, and the flattering results reveal human form with grace and warmth, lending strength to this Softbox for typical striking fashion, portrait, and beauty photography. Light spread is exceptionally even, pleasing and contrasts balanced. The exceptionally smooth coverage handles groups and objects, even can be utilized for outdoor shoots, blending perfectly with daylight.

In essence, mastering the light is no accident. This one modifier can serve as the main light, as an excellent reflector, imitate a large direct source, or by adding the outer diffuser shield, you can change the overall wash of sharper light to a less harsh attitude, all the way to a soft touch bank light effect. Independently, the inner diffuser avoids hotspots while maintaining the 'pop' of the silvered rim of material extending beyond its position. The use of both outer and inner double diffusion material combine to go even farther to produce very soft light, thereby creating three levels of contrast, sharpness, and dimension.

The entire Glow GrandBox Pro series employs advanced technology designed to create perfect images from high-end fashion to editorial and product still life subjects.

Safety Instructions

Please read and understand all the instructions to avoid injury to yourself or damage to the Glow GrandBox Pro Softbox.

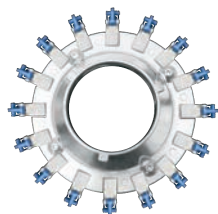
- Do not expose to moisture. Do not use a Glow GrandBox Pro Softboxes near water.
- Do not let any foreign matter spill into the softbox.
- Do not expose to chemicals such as benzene and lacquer based thinners. Do not use liquid or aerosol cleaners. Clean with a soft damp cloth only.
- Do not try to disassemble or repair a Glow GrandBox Pro Softboxes yourself.
- Do not subject a Glow GrandBox Pro Softboxes to severe impact.
- Do not place heavy objects on the folded or constructed softbox.
- Do not store in dusty environments or areas with high humidity.
- Glow GrandBox Pro Softbox fabric is heat-resistant to a degree. A 500w Halogen lamp can be used if the surface temperature does not exceed 1050F/40°C. Never expose the Softbox directly to fire.

Included Items

Your package contains the following items.

GrandBox Pro 16

35"/90cm, 47"/120cm, 55"/140cm, 71"/180cm



Adapter



Front



Back Side



Glow GrandBox Pro 16 Reflector



Inner Diffuser



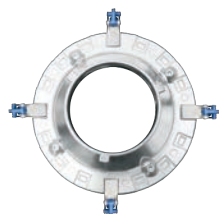
Outer Diffuser



Carrying Bag

GrandBox 4 Pro Square

24x24"/60x60cm, 32x32"/80x80cm, 40x40"/100x100cm



Adapter



Front



Back Side



Glow GrandBox 4 Pro Square Reflector



Inner Diffuser



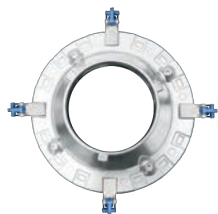
Outer Diffuser



Carrying Bag

GrandBox 4 Pro Rectangle

24x34"/60x85cm, 30x40"/75x100cm, 36x48"/90x120cm



Adapter



Front



Back Side



Glow GrandBox 4 Pro Rectangle Reflector



Inner Diffuser



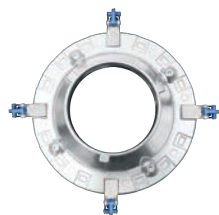
Outer Diffuser



Carrying Bag

GrandBox 4 Pro Strip

12x36"/30x90cm, 14x60"/35x150cm, 16x48"/40x120cm



Adapter



Front



Back Side



Glow GrandBox 4 Pro Strip Reflector



Inner Diffuser



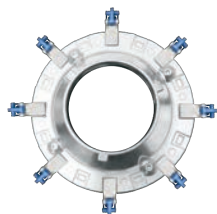
Outer Diffuser



Carrying Bag

GrandBox 8 Pro Octa

32"/80cm, 43"/110cm, 51"/130cm, 60"/150cm



Adapter



Front



Back Side



Glow GrandBox 8 Pro Octa Reflector



Inner Diffuser



Outer Diffuser



Carrying Bag

Initial Setup



Prepare the Speedring, Rods and Link-Levers of the Softbox.



Install the rods into the hole of each link-lever.



Connect each loop band of the Softbox onto the Link-lever on a Rod.



Insert the assembled link of the Softbox to the sockets of the to the GrandBox Pro Speedring.

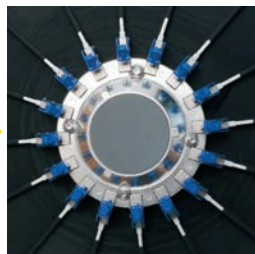


Carefully place the tabs into place in sequence around the Speedring.



Store the assembled box in Carrying bag.

Opening the Softbox

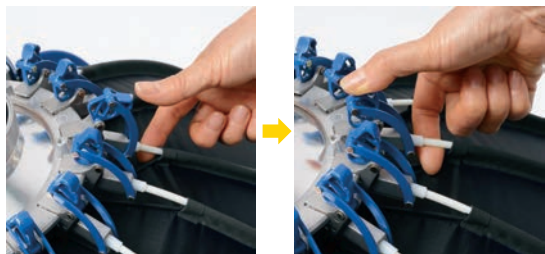


Place your thumb on the link-knob while lifting the support rods and push it upwards until each rod locks into place.



Fit the assembled softbox onto the modifier mount of your light

Closing the Softbox



Lift the rods up slightly and tilt the link-knob downwards



Optional Focus Bounce Rod Assembly



1. Main Focus Arm: Pivoting Clamp
+ Focus Bounce Rod.



2. Focus Bounce Rod mount plate



3. Indirect mount for Strobe



4. Focus Bounce Rod (Total length: 59in/150cm)
Extension Arm (Length: 29.5in/75cm)



Optional counterbalance weight

Flashhead Strobe Mount



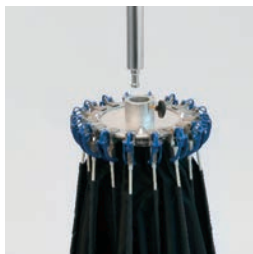
Focus Bounce Rod Mount



Loosen the 4 bolts and remove the Flashhead Speedring Adapter.

Seat the Focus Bounce Rod mount plate to the Speedring and tighten the 4 bolts.





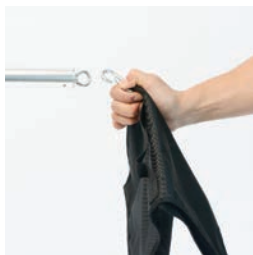
Install the Focus Rod into the hole of the Focus Bounce Rod mount of the Speedring.



Position the Rod well within the Softbox and tighten the locking bolt.

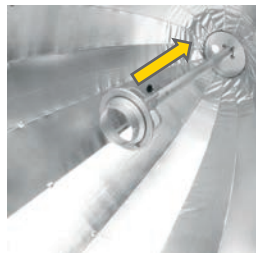
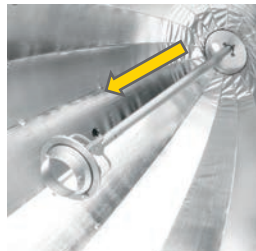


Secure the Softbox on the light stand.



Attach the Counter Balance weight bag on the hook end of the Focus Rod.

Position the Zoom In/Out Focus Arm for Custom Lighting Effects



Specifications

GrandBox Pro Common Specifications

Materials	Reinforced Fabric, Aluminum Flex Rods, Aluminum Ring
Finish	Silver interior, black matte exterior, custom trim
Diffusion	Removable Front and Interior Baffle
Speedring Mount	Glow 144mm Interchangeable
Maximum Modeling Lamp Wattage	500W

GrandBox 16 Pro Softbox

Model	35" / 90cm	47" / 120cm
Open	35 x 24" / 90 x 61.0cm	47 x 24" / 120 x 61.0cm
Closed	10 x 29" / 25.4 x 73.5cm	10 x 36" / 25.4 x 91.4cm
Rods	16 Aluminum Flex	16 Aluminum Flex
Weight	4lb 3.2oz / 1kg 906g	4lb 14.3oz / 2kg 220g
Model	55" / 140cm	71" / 180cm
Open	55 x 30.5" / 140 x 77.5cm	71 x 40" / 180 x 101.6cm
Closed	10 x 40.5" / 25.4 x 103.9cm	10 x 53" / 25.4 x 134.6cm
Rods	16 Aluminum Flex	16 Aluminum Flex
Weight	4lb 11.5oz / 2kg 142g	6lb 10.1oz / 2kg 767g

GrandBox 4 Pro Square Softbox

Model	40 x 40" / 100 x 100cm	32 x 32" / 80 x 80cm
Size	40 x 40 x 22.75" / 101.6 x 101.6 x 57.8cm	32 x 32 x 19" / 81.3 x 81.3 x 48.3cm
Closed	10 x 34.5" / 25.4 x 87.6cm	10 x 27" / 25.4 x 68.6cm
Rods	4 Aluminum Flex	4 Aluminum Flex
Weight	2lb 8.9oz / 1kg 160g	2lb 2.6oz / 980g
Model	24 x 24" / 60 x 60cm	
Size	24 x 24 x 17.5" / 61 x 61 x 44.5cm	
Closed	10 x 24" / 25.4 x 61cm	
Rods	4 Aluminum Flex	
Weight	1lb 11.1oz / 768g	

GrandBox 4 Pro Rectangle Softbox

Model	36 x 48" / 90 x 120cm	30 x 40" / 75 x 100cm
Size	36 x 48 x 20" / 91.4 x 121.9 x 50.8cm	30 x 40 x 19" / 76.2 x 101.6 x 48.3cm
Closed	10 x 34.5" / 25.4 x 87.6cm	10 x 30" / 25.4 x 76.2cm
Rods	4 Aluminum Flex	4 Aluminum Flex
Weight	2lb 9oz / 1kg 162g	2lb 4oz / 1kg 28g
Model	24 x 36" / 60 x 85cm	
Size	24 x 34 x 18" / 60.9 x 86.4 x 45.7cm	
Closed	10 x 26" / 25.4 x 66cm	
Rods	4 Aluminum Flex	
Weight	2lb 0.6oz / 926g	

GrandBox 4 Pro Strip Softbox

Model	16 x 48" / 40 x 120cm	14 x 60" / 35 x 150cm
Size	16 x 48 x 19" / 40.6 x 121.9 x 48.3cm	14 x 60 x 18.5" / 33 x 152.4 x 47cm
Closed	10 x 30" / 25.4 x 76.2cm	10 x 34.5" / 25.4 x 87.6cm
Rods	4 Aluminum Flex	4 Aluminum Flex
Weight	2lb 2.7oz / 984g	2lb 5.4oz / 1kg 62g
Model	12 x 36" / 30 x 90cm	
Size	12 x 36 x 16" / 30.5 x 91.4 x 40.6cm	
Closed	10 x 23" / 25.4 x 58.4cm	
Rods	4 Aluminum Flex	
Weight	1lb 10.8oz / 760g	

GrandBox 8 Pro Octagon Softbox

Model	32" / 80cm	43" / 110cm
Size	32 x 18" / 81.3 x 45.7cm	43 x 22" / 110 x 55.9cm
Closed	10 x 23" / 25.4 x 58.4cm	10 x 29.5" / 25.4 x 74.9cm
Rods	8 Aluminum Flex	8 Aluminum Flex
Weight	2lb 6.1oz / 1kg 82g	2lb 12.7oz / 1kg 266g
Model	51" / 130cm	60" / 150cm
Size	51 x 24.5" / 130 x 62.2cm	60 x 24" / 150 x 61cm
Closed	10 x 34" / 25.4 x 86.4cm	10 x 37" / 25.4 x 94cm
Rods	8 Aluminum Flex	8 Aluminum Flex
Weight	3lb 12.2oz / 1kg 708g	4lb 1.5oz / 1kg 856g

GrandBox Bounce Focus Rod (Optional)

Weight	6lb 1.1oz / 2kg 778g
Size Closed	29 x 24 x 6.5" / 73.6 x 60.9 x 14.0cm
Maximum Focus Rod Length	5' 9.25" / 175.9cm
Mount Size	144mm adapter series
Stand Adapter	5/8" stud socket with lock
Materials	Aluminum, Steel, and Plastics
Certifications and Standards	CE / CSA / ISO 9001 / ISO 14001 / RoHS

Two Year Glow Limited Warranty

Glow warrants to the original purchaser that your Glow product shall be free from defects in material and workmanship for the period of two (2) years from the date of purchase (or delivery as may be required in certain jurisdictions), or thirty (30) days after replacement, whichever comes later.

Glow's entire liability and your exclusive remedy for any breach of warranty shall be, at Glow's option, to repair or replace the hardware, provided that the hardware be returned to the point of purchase or such other place as Glow may direct with a copy of the sales receipt or dated itemized receipt. Glow may, at its option, replace your product, offer to provide a functionally equivalent product, or repair any product with new, refurbished or used parts as long as such parts comply with the product's technical specifications. Any replacement hardware product will be warranted for the remainder of the original warranty period or thirty (30) days, whichever is longer, or for any additional period that may be applicable in your jurisdiction. If the product has been discontinued, the warranty provider reserves the right to replace it with a model of equivalent quality and function.

This warranty does not cover problems or damage resulting from accident, abuse, misapplication, or any unauthorized repair, modification or disassembly, improper operation or maintenance, normal wear and tear, or usage not in accordance with product instructions or connection to improper voltage supply, use of consumables, such as replacement batteries, not supplied by Glow, except where such restriction is prohibited by applicable law.

Except where prohibited by applicable law, this warranty is nontransferable and is limited to the original purchaser and the country in which the product was purchased. This warranty gives you specific legal rights, and you may also have other rights, including a longer warranty duration that may vary under local laws.

To start a warranty claim contact the Glow Customer Service Department to obtain a return merchandise authorization ("RMA") number, and return the defective product to Glow, along with the RMA number and proof of purchase.

Question about our product line? Need Product Support?

We are proud of our products and celebrate our customers. We are with you, from product selection to everyday use. Be secure with your purchase and reach us as you need.

Email us: brands@adorama.com

Call: 212-647-9300

Address: Adorama Brands, 42 West 18th Street, New York, NY 10011

You can always contact us at BRANDS@ADORAMA.COM for personal technical support. Our web site contains a wide range of Support and FAQ pages with valuable technical assistance.

GLOW is a registered trademark of ADORAMA CAMERA.

© 2019 Adorama Camera, Corp. All Rights Reserved.

