

godox

# THINKLITE

Camera Flash

TT520 II / TT560 II

INSTRUCTION MANUAL



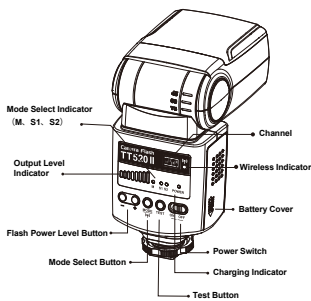
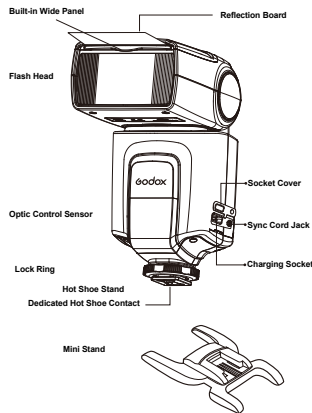
## FOREWORD

Thank you for purchasing GODOX product. Before use, please read this user manual carefully in order to ensure your safety. Keep it properly for reference in future.

## WARNING

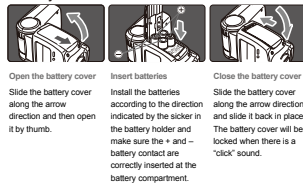
- Always keep this product dry. Do not use in rain or in damp conditions.
- Do not disassemble. Should repairs become necessary, this product must be sent to an authorized maintenance center.
- Keep out of reach of children.
- Stop using this product if it breaks open due to extrusion, falling or strong hit. Otherwise, electric shock may occur if you touch the electronic parts inside it.
- Do not fire the flash directly into the eyes (especially those of babies) within short distances. Otherwise visual impairment may occur.
- Do not use the flash unit in the presence of flammable gases, chemicals and other similar materials. In certain circumstance, these materials may be sensitive to the strong light emitting from this flash unit and fire or electromagnetic interference may result.
- Do not leave or store the flash unit if the ambient temperature reads over 50 °C. Otherwise the electronic parts may be damaged.
- Turn off the flash unit immediately in the event of malfunction.

## I . NOMENCLATURE



## II . INSTALLATION

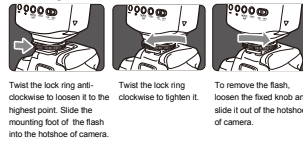
### 1. Battery Installation



#### Attention:

- Take care of the hot battery when changing them after continuous flashes.
- Take out the battery when idle in case the battery leakage damages the flash unit.

### 2. Mounting the flash on the camera



## III . USING THE FLASH

### 1. Power management

- After use, press the ON/OFF to OFF to power off.
  - Switch to the ON, the flash will start charging. (the charging indicator is dim) After several seconds, the charging indicator turns red and TT520 II / TT560 II is ready to shoot.
  - For a test flash, press the test button. After use, press the ON/OFF to OFF to power off.
  - If the red charging indicator lamp flickers in every 1s, it indicates low battery. In such case, the power will turn off automatically and you need to replace the batteries.
- ### 2. Power Control
- The flash unit has 8 steps of power output control which indicated by 8 pieces of LED lamp for different level.
  - Press "+" to make power higher and they are 1/128, 1/64, 1/32, 1/16, 1/8, 1/4, 1/2, 1/1. Otherwise, press "-" to make power lower.

### 3. M Mode

- Press the MODE key to M Mode. In this mode, you can set TT520 II / TT560 II onto your camera hotshoe or speedlite trigger hotshoe to trigger the flash unit. When shooting, adjust the flash power and press the camera shutter, the flash light will flash under the camera synchronous signal.

### 4. S1 Mode

- Press the MODE key to S1 Mode. The mode is applicable for slave flash in order to create many lighting effects. It is respectively applicable for manual flash environment.
- When the flash is S1 mode, it will fire synchronously when the master flash fires, comparable with the effect by the use of radio trigger.

### 5. S2 Mode

- Press the MODE key to S2 Mode. The mode is applicable for slave flash in order to create many lighting effects. The flash unit won't flash synchronously with the first flash but the second flash from the master flash, which is the second flash synchronization.

**Note:**  
The optic light sensor will stop functioning under M Mode.  
The hotshoe's trigger function will stop under S1 and S2 Mode.

### 6. Wireless Triggering Function

- As TT520 II / TT560 II has built-in wireless signal, please use RT transmitter as the transmitter end.
- Long press MODE button for 2 seconds to control the ON/OFF of wireless triggering function. When the wireless indicator lighted, wireless triggering function is ON; when the wireless indicator put out, wireless triggering function is OFF. To save power, turn off wireless triggering function when in idle use.

### 7. Sync Trigger Function

- The speedlite and camera will trigger synchronously by using a PC sync cord to connect the sync terminals of the camera and the speedlite together.

### 8. Power-saving Function

- To save battery power, the flash will enter stand-by state in about 30 minutes of idle use. Press any button to wake it up.
- In S1/S2 mode, the flash will enter stand-by state in about 60 minutes of idle use. Press any button to wake it up.
- In power-saving mode, the charging indicator flickers in every 3 seconds. Other indicators are turned off.

## 9. Protection Function

- Protection in continuous flashes**  
To prevent the flash head from getting too hot and damage, please do not flash over 20 times when in power level 1/2, 1/1. Please cool down the flash unit for at least 10 minutes. The over-temperature protection function will be activated if you continue to flash after 20 times. In this state the charging time will turn to 10-25s. Please cool down the flash unit around 10 minutes and it will turn to normal state.

### Number of flashes that will activate over-temperature protection:

Power Level	Number
1/1	20
1/2	33
1/4	50
1/8	66
1/16, 1/32	100
1/64, 1/128	200

### Systematic over-temperature protection

- When the inner circuit is over-heating, which indicates over use of the flash unit, the inner circuit will shut down power automatically. The flash unit will turn to normal state after the inner circuit is cooled down.

## IV . ADVANCED APPLICATION

### 1. Bounce Lighting

- Bounce flash means to take photos by bouncing the light off wall or ceiling to soften the light on the subject, and the shadow shade out, to get more desired picture.

### 2. Use Reflection Board to Take Photos

- Pull out the reflection board and built-in wide panel from the flash head at the same time and then push the built-in wide panel back. In such case, if this product is being used to take photos, it will produce a highlighted point on the eyes of the subject and thus make the eyes charming (catch lights). This function can reach optimal effect when the flash head is up 90°.

### 3. Use Wide-angle Diffuser

- Pull out the built-in wide panel to enlarge flash lighting range, so as to get more softened and natural lighting effect.

## V . SPECIFICATIONS

Model	TT520 II	TT560 II
Guide number	33 ( m ISO 100 )	38 ( m ISO 100 )
Flash mode	M, S1, S2	
Vertical rotation angle	0-90 degrees	
Horizontal rotation angle	0-270 degrees	
Power	4x AA batteries (Alkaline or Ni-MH are usable)	
Lighting times	100-1500 times (AA alkaline batteries used)	
Recycle time	approx 0.1-5s (AA alkaline batteries used)	
Color temperature	5600K±200K	
Wireless frequency	433MHz	
Channel	16	
Workable distance	15m	
Flash duration	1/300s~1/20000s	
Dimensions	190*75*55mm	
Net weight	310g	

**Accessories :**  
Flash light ..... (1)      Protecting bag ..... (1)      Mini stand ..... (1)  
User manual ..... (1)      RT transmitter ..... (1)