



**GVM Official  
website**



**Facebook**

**Huizhou City Latu Photographic Equipment Co., Ltd.**

Web: [www.gvmled.com](http://www.gvmled.com)

B&H Email: [bh@gvmled.com](mailto:bh@gvmled.com)

GVM Email: [support@gvmled.com](mailto:support@gvmled.com)

Amazon Email: [amazonsupport@gvmled.com](mailto:amazonsupport@gvmled.com)

Warehouse Add: 4301 N Delaware ave, unit D. PHILADELPHIA, PA19137, USA



**GVM<sup>®</sup>**  
Great Video Maker

**GVM-MIC-LM2**

# CONTENTS

product Features -----	1 page
Product Parameters -----	2 page
Disclaimer -----	2 page
Product Handling Instructions -----	3~4 page
TFT screen icon and LED light function introduction -----	5~6 page
Instructions -----	7~8 page
Package Contents -----	9 page
Precautions -----	10 page
Security Information -----	11 -12page

## PRODUCT FEATURES

1. Built-in microphone and external extension microphone.
2. 2.4G wireless transmission, stable signal, low distortion, low delay, highly realistic reproduction of human voice.
3. Intelligent noise reduction algorithm, which can meet the sound pickup requirements of any complex environment.
4. The receiver's TFT screen displays the transmitter's voice intensity/voice progress bar, which is beautiful and truly shows the volume of the human voice. The microphone has a local recording function and a built-in large-capacity memory chip, which can be used as a voice recorder without fear of data loss due to disconnection of the receiver or accidental data loss, making video recording or interviews safer.
5. Support TYPE-C digital audio and 3.5mm TRS analog audio output, applicable to: mobile phones, computers, SLR cameras, camcorders and other related equipment.
6. Equipped with 3.5mm headphone monitoring output, which supports real-time monitoring.
7. Fixed EQ value switch, one-click to open vocal beautification.
8. High, medium and low three-stage volume control, which is convenient for users to choose the volume.
9. Suitable for the current environment simply and quickly.
10. Equipped with a large-capacity battery storage box, it meets the requirements of long battery life for travel, live broadcast, and interviews, and is no longer troubled by battery life.

## PRODUCT PARAMETERS

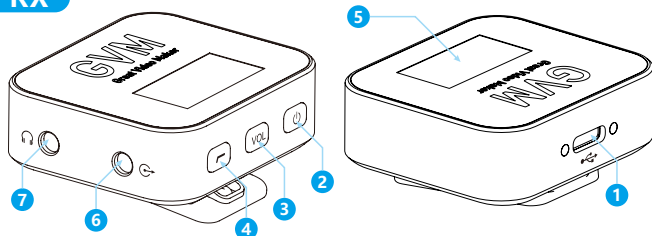
- ◆ Working frequency: 2.4-2.4835GHz
- ◆ Power supply: 3.7V lithium battery
- ◆ Acoustic/Radio Sensitivity: -40dB +/-2dB
- ◆ Maximum sound pressure level (SPL): 25DB SPL
- ◆ Frequency response: 20HZ-20KHZ
- ◆ Input signal to noise ratio: ≥73DB 1KHZ/1PA
- ◆ Transmit power: 10dBm
- ◆ Receiving sensitivity: -94dBm
- ◆ Modulation: GFSK  $\pi/4$  DQPSK
- ◆ Transmission Bandwidth and Sampling Rate: 16bit 48KHZ
- ◆ Audio output: stereophony
- ◆ Delay: ≤20mS
- ◆ Transmission distance: ≥100m
- ◆ Automatic shut-down: Automatically shut down after 5 minutes when the battery power is lower than 3.3V or no connection
- ◆ Charge limit voltage: 5.2V
- ◆ Standby power consumption: ≤35uA
- ◆ Charging time: 1.5H
- ◆ Storage box battery capacity: At 3.7V 2800mAh, it can charge TX RX more than 3 times
- ◆ Battery life: RX≥7H; TX≥10H(not recording); TX≥5H(recording)

## DISCLAIMER

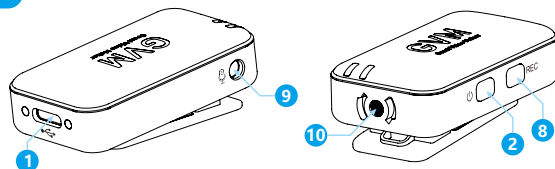
1. Before using this product, please read the text carefully to ensure proper operation of the product. Failure to follow and operate in accordance with the instructions and precautions in this article may cause injury to you and the people around you, or even damage the product or other surrounding items.
2. Once you use this product, it is deemed that you have carefully read the disclaimer and precautions, understood and recognized all the terms and contents of this statement, and promise to take full responsibility for the use of this product and possible consequences.
3. Design and specifications are subject to change without notice.

# PRODUCT HANDLING INSTRUCTIONS

## RX



## TX



### 1 Type-c socket (TX RX):

- ① Charging (TX RX).
- ② Connect to a computer or mobile phone for USB microphone (RX) function.
- ③ Connect to the computer to read the recording file (TX) in the FLASH IC.

### ON/OFF (TX RX):

- ② ① Long press on/off (2 seconds).
- ② Press and hold for 5 seconds to enter pairing when the device is powered off.
- ③ Press and hold for 5 seconds to reset the system in the power-on state.

### 3 Volume key/mute key (RX):

- ① Short press to adjust the volume. The volume is divided into three levels: low, medium and high. (reboot after shutting down/Recall the volume before shutdown) 3RX.
- ② Long press for 2 seconds to mute, the mute symbol will be displayed on the LCD screen, long press again to exit mute.

### 4 Noise reduction key/American tone key (RX):

- ① Short press to enter noise reduction (TX enters ambient noise reduction), short press again to turn off noise reduction.
- ② Long press to enter the fixed EQ value sound effect (enhance middle and low frequency), long press again to exit EQ.

### 5 TFT 0.96(RX):

- ① Display TX and RX battery power or charging indication, connection status, microphone voice input strength, system volume, EQ, mute, noise reduction, etc.
- ② Reduce the brightness of the LCD screen after 10 seconds of no operation, and trigger any button to restore the brightness.

### 6 Audio output/LINE OUT (RX):

- output audio to recording equipment.

### 7 Headphone output/HEADPHONE (RX):

- plug in a 3.5mm headphone to monitor the volume of the transmitter.

### 8 Record key (TX):

- ① Short press to enter recording. (-6DB safe recording to built-in eMMC flash memory, eMMC capacity: 8GB)
- ② Automatic loop recording, when the memory is full, it will automatically delete the recording file at the earliest time.

### 9 External microphone (TX):

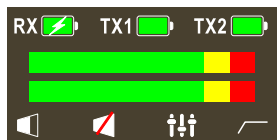
- external microphone input. (disconnect the built-in microphone when the external microphone is plugged in)

### 10 Built-in microphone (TX):

- built-in microphone audio Input.

# TFT SCREEN ICON AND LED LIGHT FUNCTION INTRODUCTION

## ① Receiver TFT display



1. Volume icon: minimum volume, medium volume, maximum volume.
2. The voice input signal strength of the microphone is displayed.
3. The noise reduction symbol lights up in the noise reduction state.
4. Charging symbol.
5. Charging complete symbol.
6. Low battery symbol.
7. Two grid electricity symbols.
8. Three grid electricity symbols.
9. Full battery symbol.
10. Mute icon, light up when mute.
11. EQ symbol, light up when EQ is turned on. (enhance middle and low frequency sounds)
12. RX pairing display: Press and hold the ON/OFF button for 5 seconds to enter pairing when the device is off. The TX1 and TX2 characters will flash. After the pairing is successful, the TX1 or TX2 characters will stay on and wait for 5 minutes. If the device is not connected, the device will automatically shut down.

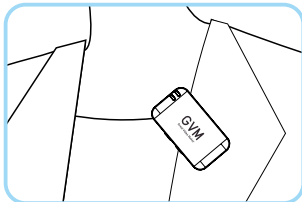
## ② Transmitter LED Indicators



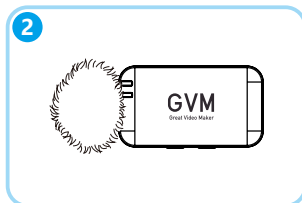
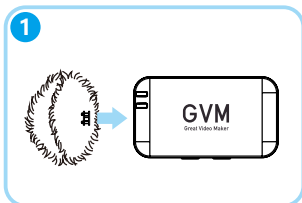
1. TX work light (blue light): flashes 1 time per second when there is no connection, and stays on when the connection is successful.
2. TX pairing light (blue light): Press and hold the ON/OFF button for 5 seconds to enter pairing in the off state, the blue light will flash quickly (once every 0.5 seconds), and the device will automatically shut down after waiting for 5 minutes if the connection fails.
3. TX recording light (green light): It is always on when the recording is turned on, and the light is off when the recording is turned off.
4. Prompt when the TX recording memory is full: the green light flashes once every 0.5 seconds.
5. TX low power flashing light: Green and red lights flash alternately.
6. TX charging indication: The red light is flashing (once every 1.5 seconds), and the flashing light is turned off after a delay of 5 seconds after fully charged.

# INSTRUCTIONS

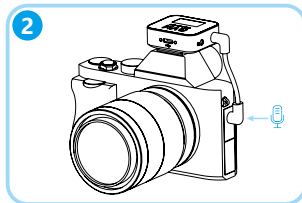
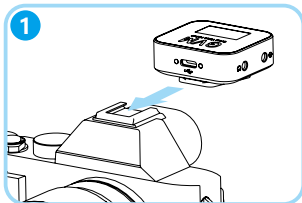
1. Clip the transmitter to the collar.



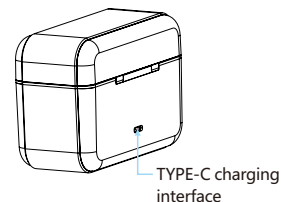
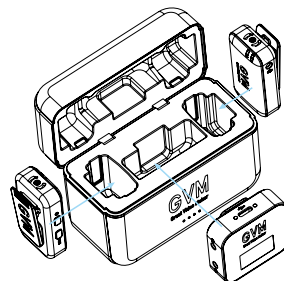
2. It is recommended to use a windproof wool cover for outdoor or windy environments. Align the wool cover with the built-in microphone bayonet of the transmitter, insert it, and rotate it to lock it.



3. Install the camera cold shoe and hot shoe on the receiver, connect the 90-degree bent TRS head of the camera audio cable to the LINE OUT port of the receiver, and connect the straight TRS head of the other end to the microphone port of the camera.



4. Charging case operation:



\* It is recommended to use a USB interface output power adapter with a voltage of 5V and a current greater than 2A to charge the charging box, adaptive charging current regulation, and adaptive adapter.

\* The charging box has a built-in 2800mAh battery, which can charge two transmitters and one receiver more than 3 times at the same time.

\* Intelligent identification of machines entering the warehouse, intelligent identification of loads, when the machine in the warehouse is fully charged, it will automatically enter standby.

\* 4 LEDs in the charging box indicate the battery level of the charging box: 25%, 50%, 75%, 100%.

## PACKAGE CONTENTS

Instructions	Quantity	Remark
Transmitter	2	
Receiver	1	
Charging box	1	
Windproof cotton	2	
Camera audio cable	1	
TYPE-C data cable	1	
Warranty Card	1	
Manual	1	

## PRECAUTIONS

In order to avoid personal injury or property damage that may be caused by electric shock, high temperature, fire, radiation, explosion, mechanical hazards and improper use, please read and abide by the following items carefully before using this product:

1. When using the product, please confirm whether the power of the connected device matches the product and adjust the volume of the device reasonably. Do not use it for a long time under the power of the product and high volume, so as not to cause product abnormalities;
2. If any abnormality (such as smoke, peculiar smell, etc.) is found during use, please immediately turn off the power switch and unplug the power plug, and then send the product to the dealer for repair;
3. This product and its accessories should be placed in a dry and ventilated place indoors. Do not store it in a humid or dusty environment for a long time. During use, avoid close to fire sources, rain, water, excessive collision, throwing, vibration of the machine and cover ventilation holes to avoid damaging their functionality;
4. When using this product, you must comply with relevant safety regulations. Laws and regulations clearly prohibit the use of the product, so as not to cause accidents;
5. Please do not disassemble, refit or repair by yourself to prevent personal injury. If you have any questions or service needs, please contact your local dealer for follow-up.

## SECURITY INFORMATION



Changes or modifications not expressly approved by the party responsible for compliance could void the user's authority to operate the equipment. This device complies with Part 15 of the FCC Rules. The operation is subject to the following two conditions:

- ① This device may not cause harmful interference;
- ② This device must accept any interference received, including interference that may cause undesired operation.

**NOTE:** This equipment has been tested and found to comply with the limits for a Class B digital device, pursuant to Part 15 of the FCC Rules. These limits are designed to provide reasonable protection against harmful interference in a residential installation. This equipment generates, uses and can radiate radio frequency energy and, if not installed and used in accordance with the instructions, may cause harmful interference to radio communications. However, there is no guarantee that interference will not occur in a particular installation.

If this equipment does cause harmful interference to radio or television reception which can be determined by turning the equipment off and on, the user is encouraged to try to correct the interference by one or more of the following measures:

- Reorient or relocate the receiving antenna.
- Increase the separation between the equipment and receiver
- Connect the equipment into an outlet on a circuit different from that to which the receiver is connected.
- Consult the dealer or an experienced radio/TV technician for help

NOTE: This device and its antenna(s) must not be co-located or operation in conjunction with any other antenna or transmitter.

The device has been evaluated to meet general RF exposure requirement.  
The device can be used in portable exposure condition without restriction.



This product should be handed over to an authorized electrical and electronic equipment (WEEE) collection point for recycling. Also, your proper disposal of this product will contribute to the efficient use of natural resources. For more information on where you can put your waste recycling equipment, please contact your local city office, waste authority or household waste disposal service.