



GREEN
EXTREME™

Vertical

Battery Grip

GXBGMBN11
for Nikon Z6II/Z7II
Nikon MB-N11 Replacement
Manual

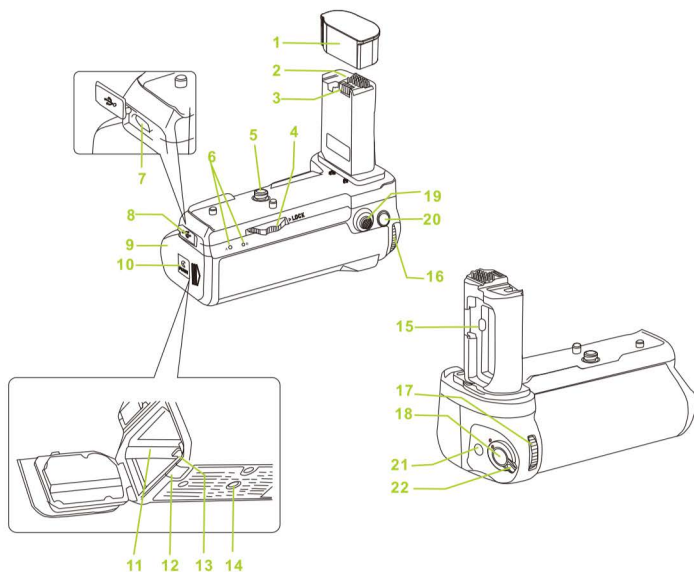
Thank You for Choosing Green Extreme

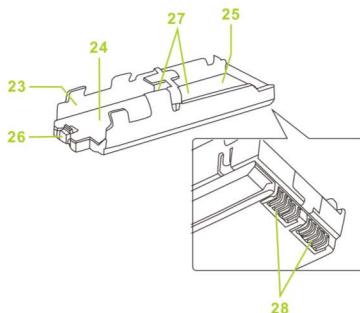
The Green Extreme MB-N11 is installed on Z6II/Z7II and can be used with two EN-EL15C/EL15B/EL15A/EL15 lithium batteries. Please read these instructions carefully before using this product, and save this manual for future use.

Enjoy the many benefits that a battery grip offers, extend your shooting time and have more control and comfort when shooting in portrait orientation.

Please read the manual before using this product. Please keep it properly for convenient access. Please use the product only after you fully understand how to use.

Overview



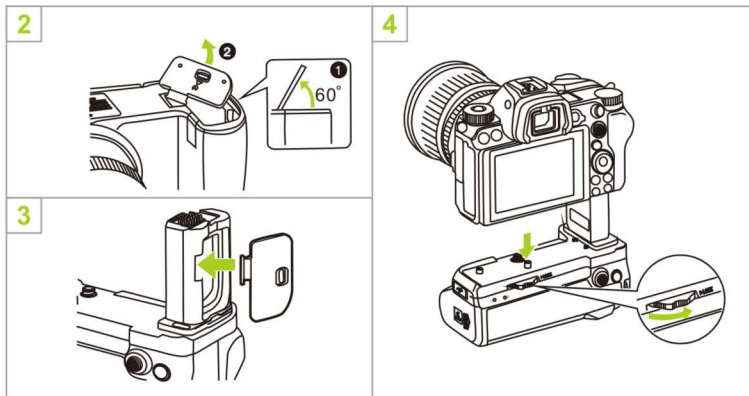


- | | |
|----------------------------------|--|
| 1. Contact cover | 15. Battery bay cover bracket |
| 2. Signal contact | 16. Vertical dial for master command |
| 3. Power supply contact | 17. Vertical dial for secondary command |
| 4. Lock screw knob | 18. Portrait shutter release button |
| 5. Fixed screw | 19. Portrait shot multiple selector |
| 6. LED lights (2PCS) | 20. Tap the AF-ON button vertically |
| 7. Charging interface | 21. Tap the Fn button in portrait |
| 8. Charging interface cover | 22. Control lock |
| 9. Battery hatch cover | 23. Battery holder |
| 10. Battery cabin latch | 24. Battery compartment A |
| 11. Battery cabin | 25. Battery compartment B |
| 12. Camera power connector cover | 26. Battery latch lock |
| 13. Battery holder latch | 27. Battery power terminal (2PCS) |
| 14. Tripod connection hole | 28. Power terminal of the battery holder |

- These controls perform the same function as their on-camera equivalents and are effected by changed made to the custom setting menu(see your cameras manual for details)

Attaching the Grip

Please turn off the camera before installing MB-N11. You will also need to rotate the control lock to the L position.



1. Remove the contact cover from the battery case.

Store the contact cover in a safe place.

2. Remove the battery hatch cover from the bottom of the camera (Figure 2) and install it on the battery hatch support of the MB-N11 (Figure 3).

If there are batteries in the camera, take them out.

3. Mount the MB-N11 on the camera (Figure 4).

Hold the battery case in place by rotating the locking screw button in the direction indicated by the ► LOCK arrow.

Remove the MB-N11

1. To remove the MB-N11, close the camera and loosen it by turning the locking screw in the opposite direction as indicated by the arrow. After removing the MB-N11, remove the battery hatch cover from the battery hatch bracket phase and re-place it over the camera.

2 Place the contact cover back on the MB-N11 when the battery case is not in use.

Install to the camera

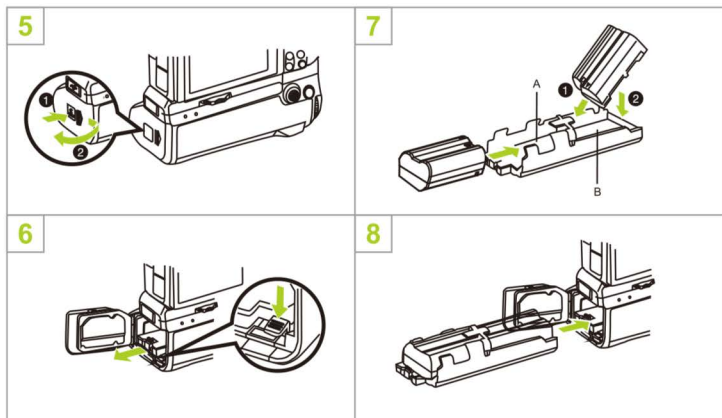
A maximum of two EN-EL15C lithium-ion battery packs can be used in the MB-N11. Turn off the camera before inserting the battery. You will also need to rotate the control lock to the L position.

1. Hold down the battery cabin latch and slide the battery cabin cover to one end and open it (Figure 5).
2. Press down the battery seat latch in the direction shown and remove the battery seat (Figure 6).
3. Insert the battery into the battery holder (Figure 7).

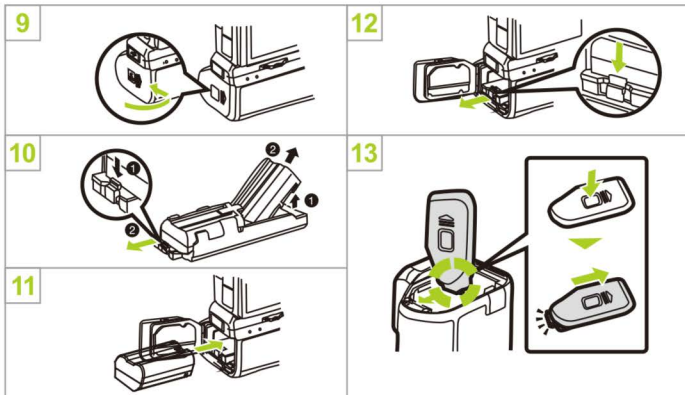
Ensure that the battery is inserted in the correct direction. When the battery is fully inserted into Battery Bay A, the battery latch will snap into the correct position and make a clicking sound.

4. Insert the battery holder with the battery holder terminal facing inward (Figure 8).

Use the bottom of the battery holder to press the latch on the battery holder, and slide the battery holder into the battery cabin with the terminal facing inward until the latch snaps back into place and clicks.



5. Close the battery hatch cover and press and slide in the direction shown to lock it (Figure 9).



1. Take out the battery

Remove the battery holder and then remove the battery as shown (Figure 10).

2. Replace the battery in battery bay A

You can directly replace the battery in battery Bay A without removing the battery holder. Insert the battery as shown in the picture until the latch snaps into the correct position and clicks (Figure 11). You can remove the battery in battery Bay A by pressing the battery holder latch as shown in (Figure 12) and sliding the battery out from the battery holder.

3. Replace batteries during filming

When two batteries are inserted, you can replace the batteries in battery Bay A without turning off the camera. You may find this practical when using your camera continuously for long periods of time. Be careful not to press the battery holder latch or remove the holder during the battery replacement process.



4. Battery order

1. If you use only one battery, you can insert the battery into any battery compartment.
2. When two batteries are inserted, the battery in battery Bay A will be used first. When the battery in battery Bay A is depleted, the camera will use the battery in battery Bay B.

5. Low temperature environment

When powered by an uncharged EN-EL15C/EN-EL15B/EN-EL15A/EN-EL15 lithium ion battery pack, the camera may not work properly in a low temperature environment (about 10°C or below). In cold weather, fully charge one battery pack before use, and store the other fully charged battery pack in a warm place to be replaced if needed. Battery power may recover somewhat after the battery has warmed up.

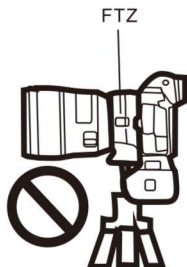
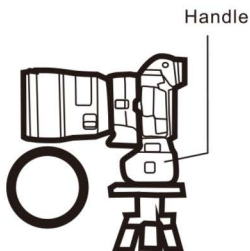
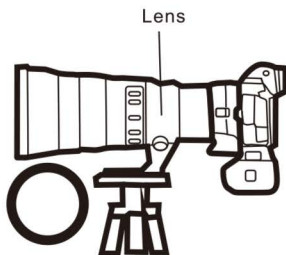
Battery level in MB-N11

The battery level in the MB-N11 is displayed in the camera shooting display and control panel.

Precautions for Use

Please note the following when using MB-N11.

1. Contact of power/signal contacts with metal objects may cause short circuit; Close the contact cover before storing or transporting the battery case, or charging the battery without the case installed in the camera.
2. The camera memory card access indicator may light up when the handle is mounted to or removed from the camera.
3. When using the camera with both the handle and the purchased FTZ port adapter, connect the tripod to the tripod mounting mount on the lens or handle, not to the tripod mounting mount on the FTZ.



4. The handle is not equipped with a power switch. Use the camera power switch to turn the camera on and off.
5. When transporting the product, please pack enough cushioning material in the packing case to minimize (avoid) damage caused by impact.
6. When transporting the product, please take out the battery inside, cover the battery terminal cover or store it in a bag to prevent the battery electrode from contacting other battery electrodes, necklaces, and other items, which may cause battery short circuit. Battery short circuit may cause leakage, damage and other problems.

Specifications Sheet

Type	GXBGMBN11
Power Sources	EN-EL15C/EL15B/EL15A/EL15 Battery pack * 2pcs
Fit Cameras	Nikon Z6II/Z7II
Replacement For	MB-N11
Operating Temperature	0°C~40°C
Dimensions	139 × 77 × 118 mm
Weight	about 261g

- All the trademarks are the property of their respective owners



One Year Limited Warranty

Green Extreme warrants to the original purchaser that your Green Extreme product shall be free from defects in material and workmanship for the period of one (1) years from the date of purchase (or delivery as may be required in certain jurisdictions), or thirty (30) days after replacement, whichever comes later.

Green Extreme's entire liability and your exclusive remedy for any breach of warranty shall be, at Green Extreme's option, to repair or replace the hardware, provided that the hardware is returned to the point of purchase or such other place as Green Extreme may direct with a copy of the sales receipt or dated itemized receipt. Green Extreme may, at its option, replace your product, offer to provide a functionally equivalent product, or repair any product with new, refurbished or used parts as long as such parts are in compliance with the product's technical specifications. Any replacement hardware product will be warranted for the remainder of the original warranty period or thirty (30) days, whichever is longer, or for any additional period of time that may be applicable in your jurisdiction. If the product has been discontinued, the warranty provider reserves the right to replace it with a model of equivalent quality and function.

This warranty does not cover problems or damage resulting from accident, abuse, misapplication, or any unauthorized repair, modification or disassembly, improper operation or maintenance, normal wear and tear, or usage not in accordance with product instructions or connection to improper voltage supply, use of consumables, such as replacement batteries, not supplied by Green Extreme, except where such restriction is prohibited by applicable law.

Except where prohibited by applicable law, this warranty is nontransferable and is limited to the original purchaser and the country in which the product was purchased. This warranty gives you specific legal rights, and you may also have other rights, including a longer warranty duration that may vary under local laws.

To start a warranty claim contact the Green Extreme Customer Service Department to obtain a return merchandise authorization ("RMA") number, and return the defective product to Green Extreme, along with the RMA number and proof of purchase.

Question about our product line? Need Product Support?

We are proud of our products and celebrate our customers. We are with you from product selection to everyday use. Be secure with your purchase and reach us as you need.

Email us: brands@adorama.com Call: 212-647-9300

Address: Adorama Brands, 42 West 18th Street, New York, NY 10011

You can always contact us at BRANDS@ADORAMA.COM for personal technical support. Our web site contains a wide range of Support and FAQ pages with valuable technical assistance.

Green Extreme is a registered trademark of ADORAMA CAMERA.

© 2023 Adorama Camera, Corp. All Rights Reserved.