



GREEN
EXTREME™

Vertical

Battery Grip

GXBGVGC4EM

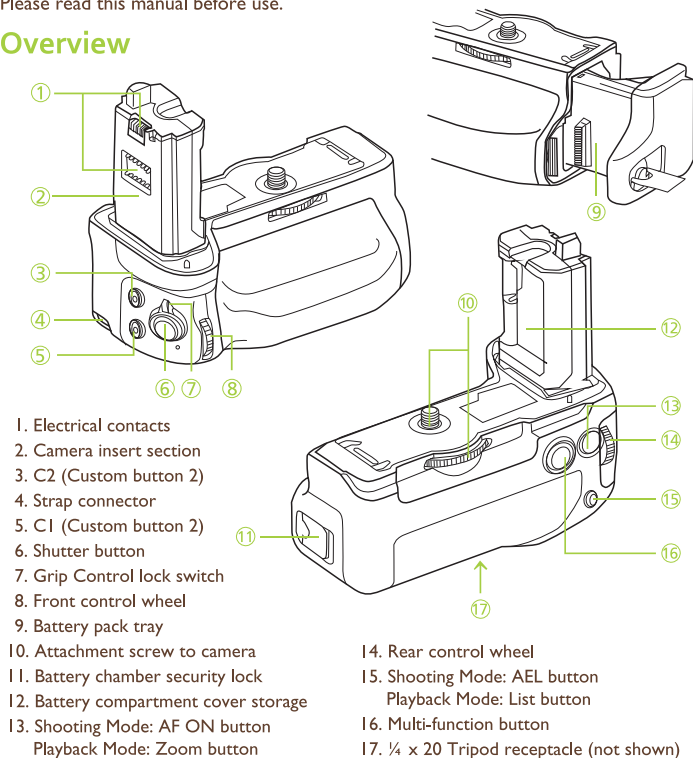
for Sony Alpha a7R IV / a9 II
Sony VG-C4EM Replacement
Manual

Thank You for Choosing Green Extreme

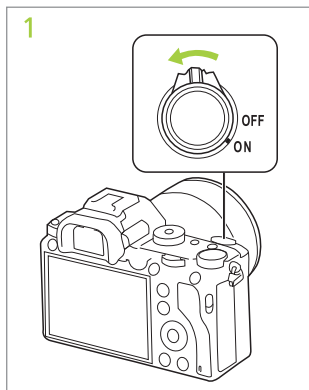
The Green Extreme Professional Power Battery Grip for the Sony A7R IV & A9 II MSLR Cameras is an essential accessory with excellent ergonomics, explicitly designed for the Sony A7R IV & A9 II MSLRs using up to two NP-FZ100 batteries. The grip matches the design and feel of your camera while doubling the battery power with a twin cell chamber that can load a choice of one or two battery packs. The grip has generous operating controls as well: shutter button, Main Dial, multi-controller, AF point selection button, AE lock/FE lock button, AF start button, and multi-function button. The grip has smart, utilizing inserted batteries in a sequence of power reserve while displaying the status in realtime.

Please read this manual before use.

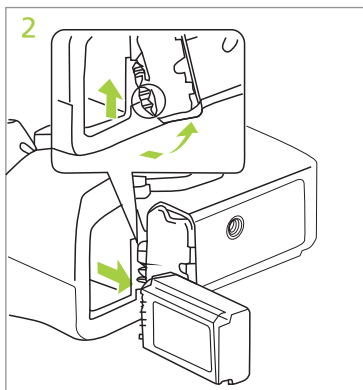
Overview



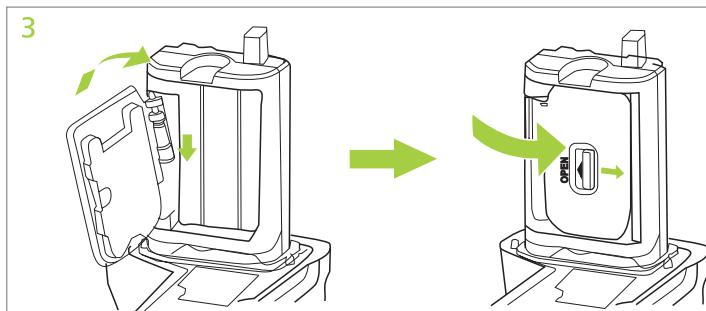
Join the Grip to the Camera



1. Turn of the camera.

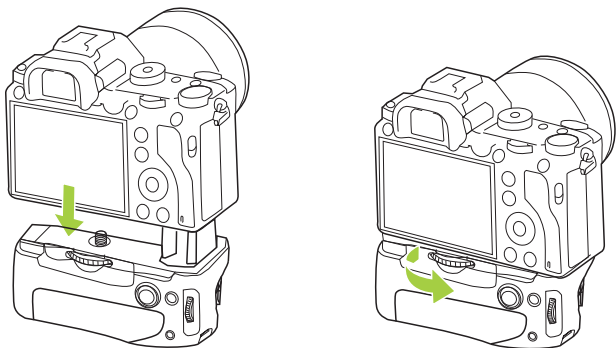


2. Open the camera's battery chamber cover and remove the battery. Unhinge and remove the compartment cover from the camera.



3. Attach the chamber cover onto the battery compartment cover storage (12) for safe keeping on the grip.

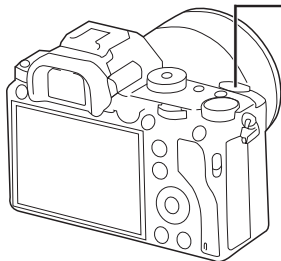
4



4. Insert the grip's electrical control bar in the camera's open battery chamber. Slide the grip into the chamber until the camera base meets the grip and carefully align the grip attachment screw with the camera's tripod socket. Turn the attachment wheel in the direction of the arrow to securely join camera and grip.

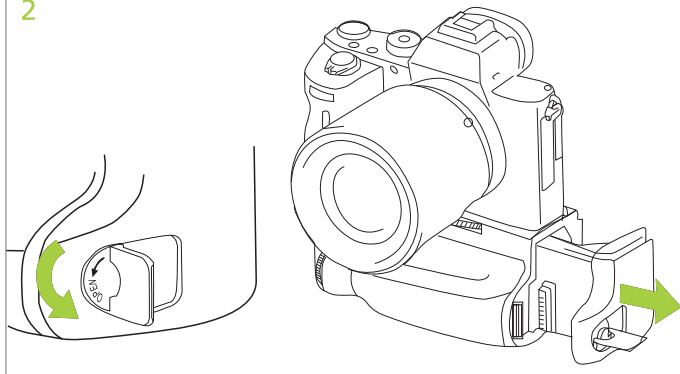
Load the Batteries

1

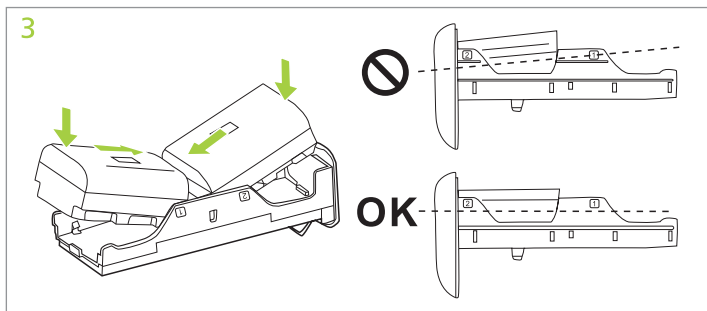


1. Turn the Camera and the Grip off.

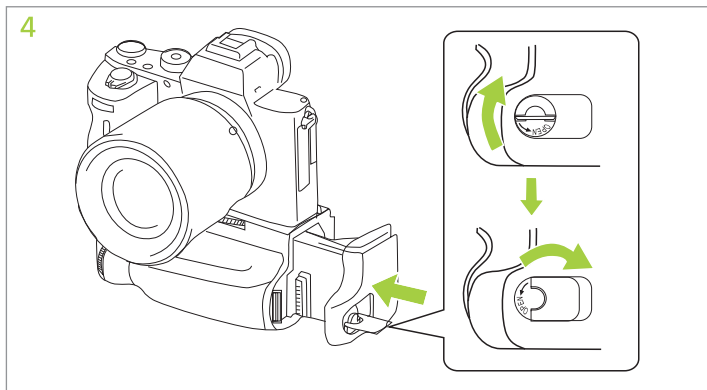
2



2. Open the battery chamber by turning the latch counterclockwise. Slide the battery tray from the grip body.



3. Place each NP-FZ100 battery module in its space, carefully aligning the cells to lay flat in the channel to assure firm contact in the tray. One cell can be used. The tray has space for two cells.



4. Slide the battery tray back into the grip body. Rotate the lock clockwise and fold the handle into the pocket.
5. Switch the Battery Grip ON. Turn your Camera ON. Confirm the grip is supplying power to your camera by observing the battery capacity display for your particular camera model. Recharge and replace batteries as often as necessary, but always before an important photo session.
6. Fire away!

Important Notes:

- Recharge and replace batteries as often as necessary, but always before an important photo session.
- Vertical camera controls on the front right of the Grip, including a second camera trigger, are the same as the horizontal camera grip designations. The trigger button must be unlocked to activate.
- Camera power is not controlled by the Grip. Always turn off both the Camera and the Grip when shutting down.
- As we mentioned, this Grip has smarts, utilizing inserted batteries in a sequence of power reserve while displaying the status in real-time on the camera. Once two NP-FZ100 battery packs are inserted in the Grip, the one with less power reserve is displayed and is used first. The display shows the weaker module level. When the battery pack in use is depleted, the Grip automatically switches to the second cell.

Specification

Camera Compatibility	Sony A7R IV & A9 II MSLR Cameras
Power Source	Sony NP-FZ100 or equivalent
Voltage	7.2V DC
Working Temperature Range	32°F - 104°F / 0°C - 40°C
Storage Temperature	-4°F - 140°F / 20°C - 60°C
Weight	8.1oz / 230g (without batteries)
Dimensions	5.0 x 4.25 x 2.4in / 126.9 x 107.9 x 61.8mm

One Year Green Extreme Limited Warranty

GREEN EXTREME warrants to the original purchaser that your GREEN EXTREME product shall be free from defects in material and workmanship for the period of one (1) year from the date of purchase (or delivery as may be required in certain jurisdictions), or thirty (30) days after replacement, whichever comes later.

GREEN EXTREME's entire liability and your exclusive remedy for any breach of warranty shall be, at GREEN EXTREME's option, to repair or replace the hardware, provided that the hardware is returned to the point of purchase or such other place as GREEN EXTREME may direct with a copy of the sales receipt or dated itemized receipt. GREEN EXTREME may, at its option, replace your product, offer to provide a functionally equivalent product, or repair any product with new, refurbished or used parts as long as such parts are in compliance with the product's technical specifications. Any replacement hardware product will be warranted for the remainder of the original warranty period or thirty (30) days, whichever is longer, or for any additional period of time that may be applicable in your jurisdiction. If the product has been discontinued, the warranty provider reserves the right to replace it with a model of equivalent quality and function.

This warranty does not cover problems or damage resulting from accident, abuse, misapplication, or any unauthorized repair, modification or disassembly, improper operation or maintenance, normal wear and tear, or usage not in accordance with product instructions or connection to improper voltage supply, use of consumables, such as replacement batteries, not supplied by GREEN EXTREME, except where such restriction is prohibited by applicable law.

Except where prohibited by applicable law, this warranty is nontransferable and is limited to the original purchaser and the country in which the product was purchased. This warranty gives you specific legal rights, and you may also have other rights, including a longer warranty duration that may vary under local laws.

To start a warranty claim contact the GREEN EXTREME Customer Service Department to obtain a return merchandise authorization ("RMA") number, and return the defective product to GREEN EXTREME, along with the RMA number and proof of purchase.

Question about our product line? Need Product Support?

We are proud of our products and celebrate our customers. We are with you from product selection to everyday use. Be secure with your purchase and reach us as you need.

Email us: brands@adorama.com Call: 212-647-9300

Address: Adorama Brands, 42 West 18th Street, New York, NY 10011

You can always contact us at BRANDS@ADORAMA.COM for personal technical support. Our web site contains a wide range of Support and FAQ pages with valuable technical assistance.

Green Extreme is a registered trademark of ADORAMA CAMERA.
© 2020 Adorama Camera, Corp. All Rights Reserved.