



GREEN  
EXTREME™

Vertical

# Battery Grip

**GXBGVGC5**  
for Sony A9III/A1II  
Sony VG-C5 Replacement  
Manual

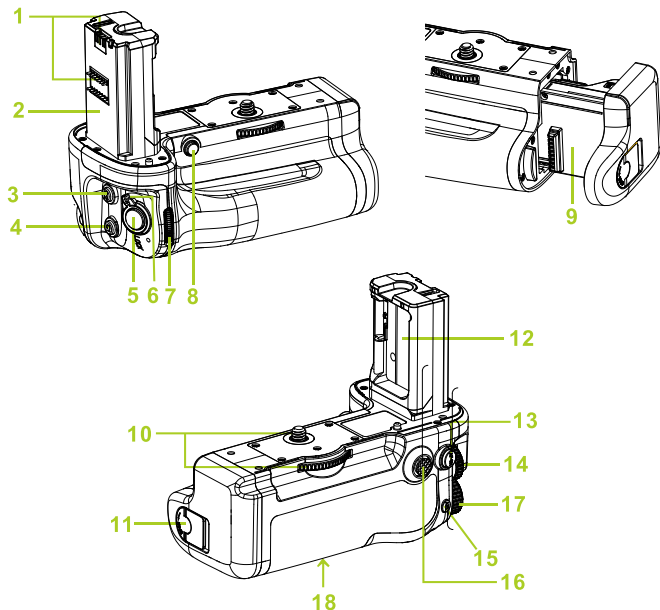
# Thank You for Choosing Green Extreme

The Green Extreme VG-C5 is installed on A9III/A1III and can be used with two NP-FZ100 batteries. Please read these instructions carefully before using this product, and save this manual for future use.

Enjoy the many benefits that a battery grip offers, extend your shooting time and have more control and comfort when shooting in portrait orientation.

Please read the manual before using this product. Please keep it properly for convenient access. Please use the product only after you fully understand how to use.

## Overview



1. Electrical contacts
2. Guide bar
3. C2 (custom 2) button
4. C1 (custom 1) button
5. Shutter button
6. Grip control LOCK switch
7. Front control dial
8. C5 (custom 5) button
9. Battery pack tray
10. Attachment screw
11. Battery chamber OPEN/CLOSE knob
12. Battery cover slot
13. While shooting: AF ON button  
While playing: (Zoom-in) button
14. Rear control dial L
15. While shooting: AEL button  
While playing: (List minimization) button
16. Multi-selector
17. Rear control dial R
18. Tripod receptacle

## WARNING:

To reduce fire or shock hazard, do not expose the unit to rain or moisture.

Tape over lithium battery contacts to avoid short-circuit when disposing of batteries, and follow local regulations for battery disposal.

Keep batteries or things that could be swallowed away from young children.

Contact a doctor immediately if an object is swallowed. Immediately remove the batteries and discontinue use if...

- The product is dropped or subjected to an impact in which the interior is exposed.

- The product emits a strange smell, heat, or smoke.

Do not disassemble. Electric shock may occur if a high voltage circuit inside the product is touched.

- These controls perform the same function as their on-camera equivalents and are effected by changed made to the custom setting menu(see your cameras manual for details)

## Attaching this unit to the camera

1. Set the ON/OFF switch of the camera to "OFF."
2. Detach the battery cover, then remove the battery pack(s) from the camera.
3. Attach the battery cover of the camera firmly to the battery cover slot as illustrated

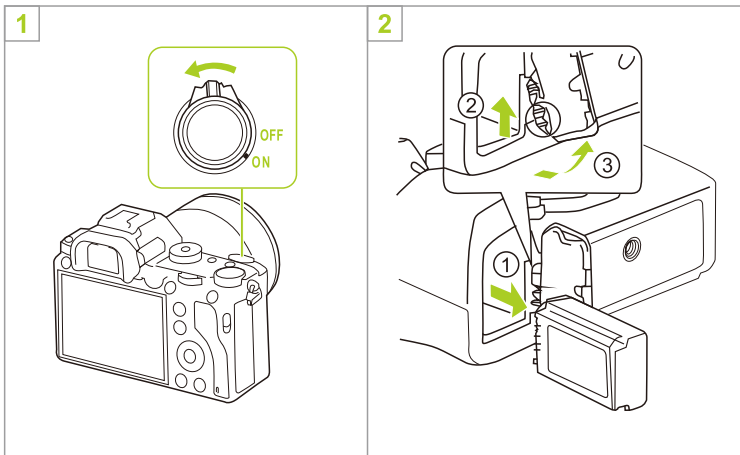
- 1). When you do not use this unit, be sure to attach the battery cover to the camera.
- 2). If the battery pack(s) is in this unit, remove the battery pack(s) from this unit.

### 4. Align the following part to attach this unit to the camera.

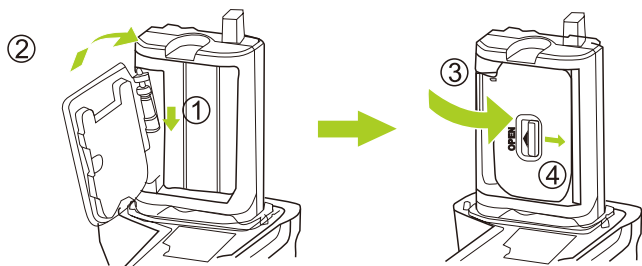
- 1). [This unit] Guide bar  $\longleftrightarrow$  [Camera] Battery insertion slot
- 2). [This unit] Attachment screw  $\longleftrightarrow$  [Camera] Tripod socket hole

### 5. Rotate the attachment screw to lock it.

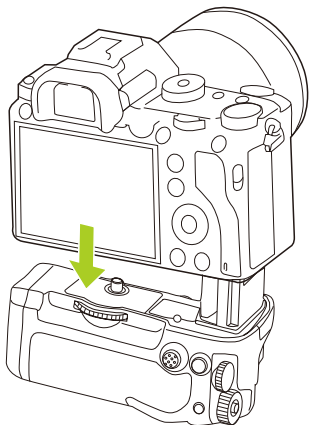
- 1). Periodically confirm that the attachment screw is not loose while in use.
- 2). After attaching this unit to the camera, make sure that all parts are securely in place.



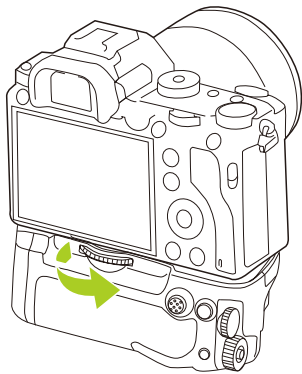
3



4



5



# Inserting the battery packs

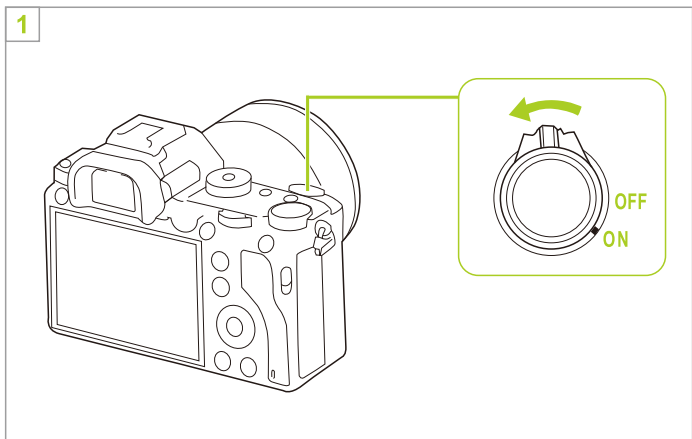
Battery pack NP-FZ100 (1 or 2 required)

1. When replacing the battery pack(s) with this unit attached to the camera, set the ON/OFF switch of the camera to OFF.
2. Rotate the battery chamber OPEN/CLOSE knob in the direction of the arrow pointing to "OPEN," and then pull out the battery pack tray.
3. Attach the battery pack(s) to the battery pack tray according to the display on the battery pack tray.

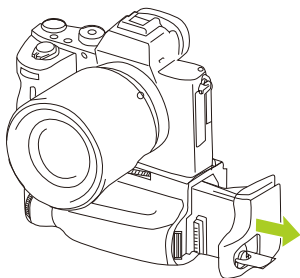
- When attaching a battery pack, attach it to either side.
- Attach the battery pack NP-FZ100 only to the battery pack tray. Do not attach the other battery pack(S).

4. Inset the battery pack tray and rotate the battery chamber OPEN/CLOSE knob.

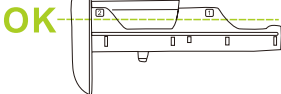
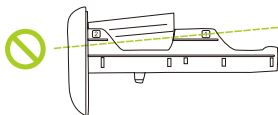
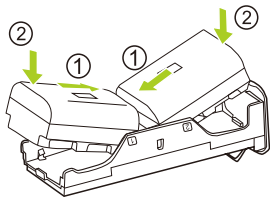
- Rotate the battery chamber OPEN/CLOSE knob properly to the position as illustrated.



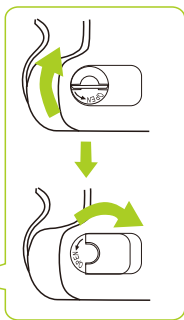
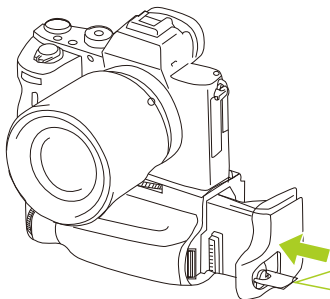
2



3



4



## Charging the battery pack(s)

Charge the battery pack(s) while this unit is attached to the camera. Note that this unit itself is not capable of charging the battery pack(s).

1. Set the ON/OFF switch of the camera to "OFF".
  2. Attach the AC adaptor (supplied with the camera) to the camera with the micro USB cable (supplied with the camera) and plug the AC adaptor to a power outlet.
- \* You can charge the battery pack(s) with a computer as well.

- 1). When two battery packs are inserted, the one that has less power remained is first charged.
- 2). It takes 120 minutes to charge one battery pack and 250 minutes to charge two battery packs.
- 3). While battery charge is in progress, the charge indicator lamp lights on the camera.
- 4). For more information, refer to the operating instructions supplied with your camera.

## Shooting vertical images

The operations of the unit's dials and buttons are same as those for the camera main body. When using this unit, also refer to the operating instructions supplied with your camera.

When using this unit in vertical orientation, align the grip control LOCK switch with “.”

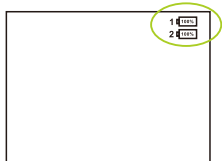
- The grip control LOCK switch enables/ disables the dial and button functions.
- Regardless of the position of the grip control LOCK switch, the operating button on the camera always operates.
- Switch the power ON and OFF with the ON/OFF switch of the camera.

The grip control LOCK switch can not switch the power ON and OFF.

## Remaining battery power indicator

When you insert the two battery packs ( NP-FZ100 ) into this unit, the following indicator is displayed on the LCD monitor of the camera. ( The position of the battery power indicator varies depending on the mode of the camera. )

### LCD monitor (example)



In the two sets of batteries, the one with the higher remaining power will be used first. If the remaining power of the two batteries is close to equal, both will be used at the same time.

## Specifications Sheet

Type	GXBGVGC5
Power Sources	NP-FZ100 Battery pack * 2pcs
Fit Cameras	Sony A9III/A1III
Replacement For	VG-C5
Operating Temperature	0°C~40°C
Dimensions	136.1 × 108.9 × 68.3mm
Weight	about 204g

- All the trademarks are the property of their respective owners



## One Year Limited Warranty

Green Extreme warrants to the original purchaser that your Green Extreme product shall be free from defects in material and workmanship for the period of one (1) years from the date of purchase (or delivery as may be required in certain jurisdictions), or thirty (30) days after replacement, whichever comes later.

Green Extreme's entire liability and your exclusive remedy for any breach of warranty shall be, at Green Extreme's option, to repair or replace the hardware, provided that the hardware is returned to the point of purchase or such other place as Green Extreme may direct with a copy of the sales receipt or dated itemized receipt. Green Extreme may, at its option, replace your product, offer to provide a functionally equivalent product, or repair any product with new, refurbished or used parts as long as such parts are in compliance with the product's technical specifications. Any replacement hardware product will be warranted for the remainder of the original warranty period or thirty (30) days, whichever is longer, or for any additional period of time that may be applicable in your jurisdiction. If the product has been discontinued, the warranty provider reserves the right to replace it with a model of equivalent quality and function.

This warranty does not cover problems or damage resulting from accident, abuse, misapplication, or any unauthorized repair, modification or disassembly, improper operation or maintenance, normal wear and tear, or usage not in accordance with product instructions or connection to improper voltage supply, use of consumables, such as replacement batteries, not supplied by Green Extreme, except where such restriction is prohibited by applicable law.

Except where prohibited by applicable law, this warranty is nontransferable and is limited to the original purchaser and the country in which the product was purchased. This warranty gives you specific legal rights, and you may also have other rights, including a longer warranty duration that may vary under local laws.

To start a warranty claim contact the Green Extreme Customer Service Department to obtain a return merchandise authorization ("RMA") number, and return the defective product to Green Extreme, along with the RMA number and proof of purchase.

### Question about our product line? Need Product Support?

We are proud of our products and celebrate our customers. We are with you from product selection to everyday use. Be secure with your purchase and reach us as you need.

Email us: [brands@adorama.com](mailto:brands@adorama.com) Call: 212-647-9300

Address: Adorama Brands, 42 West 18th Street, New York, NY 10011

You can always contact us at [BRANDS@ADORAMA.COM](mailto:BRANDS@ADORAMA.COM) for personal technical support. Our web site contains a wide range of Support and FAQ pages with valuable technical assistance.

Green Extreme is a registered trademark of ADORAMA CAMERA.

© 2026 Adorama Camera, Corp. All Rights Reserved.