

PT-ELITE-LS



Elite Universal Tablet & iPad Teleprompter for Light Stand



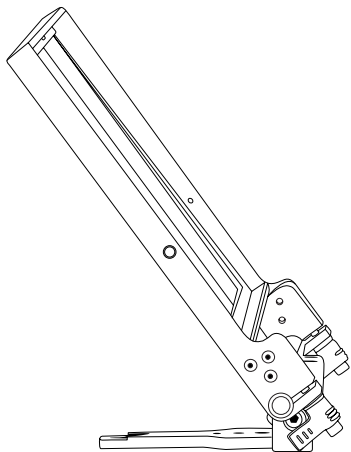
What's Included

- ☐ 1 x Glass Frame Assembly
- ☐ 1 x Magnetic Hood
- ☐ 1 x Tablet Holder Extension
- ☐ 1 x Universal Tablet Holder
- ☐ 2 x D-Ring

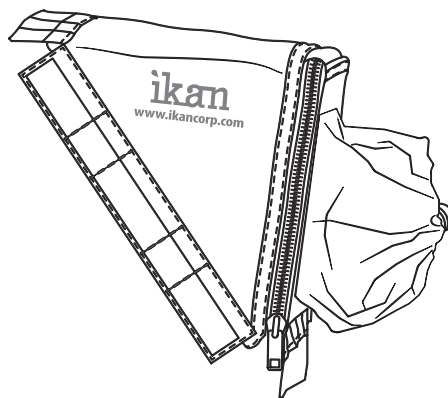
CHECKED BY



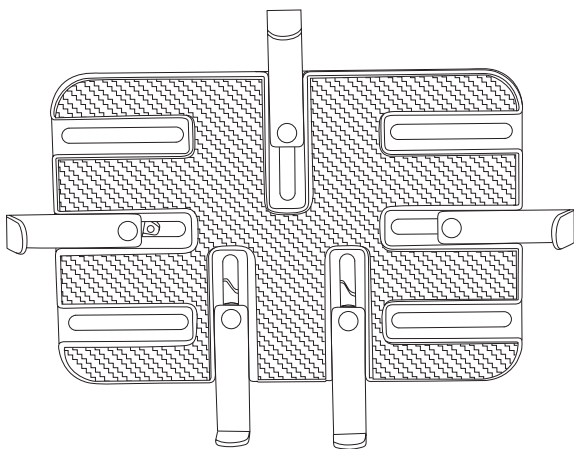
What's Included



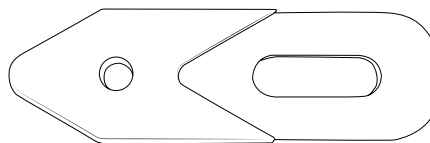
☐ Glass Frame Assembly



☐ Magnetic Sunhood



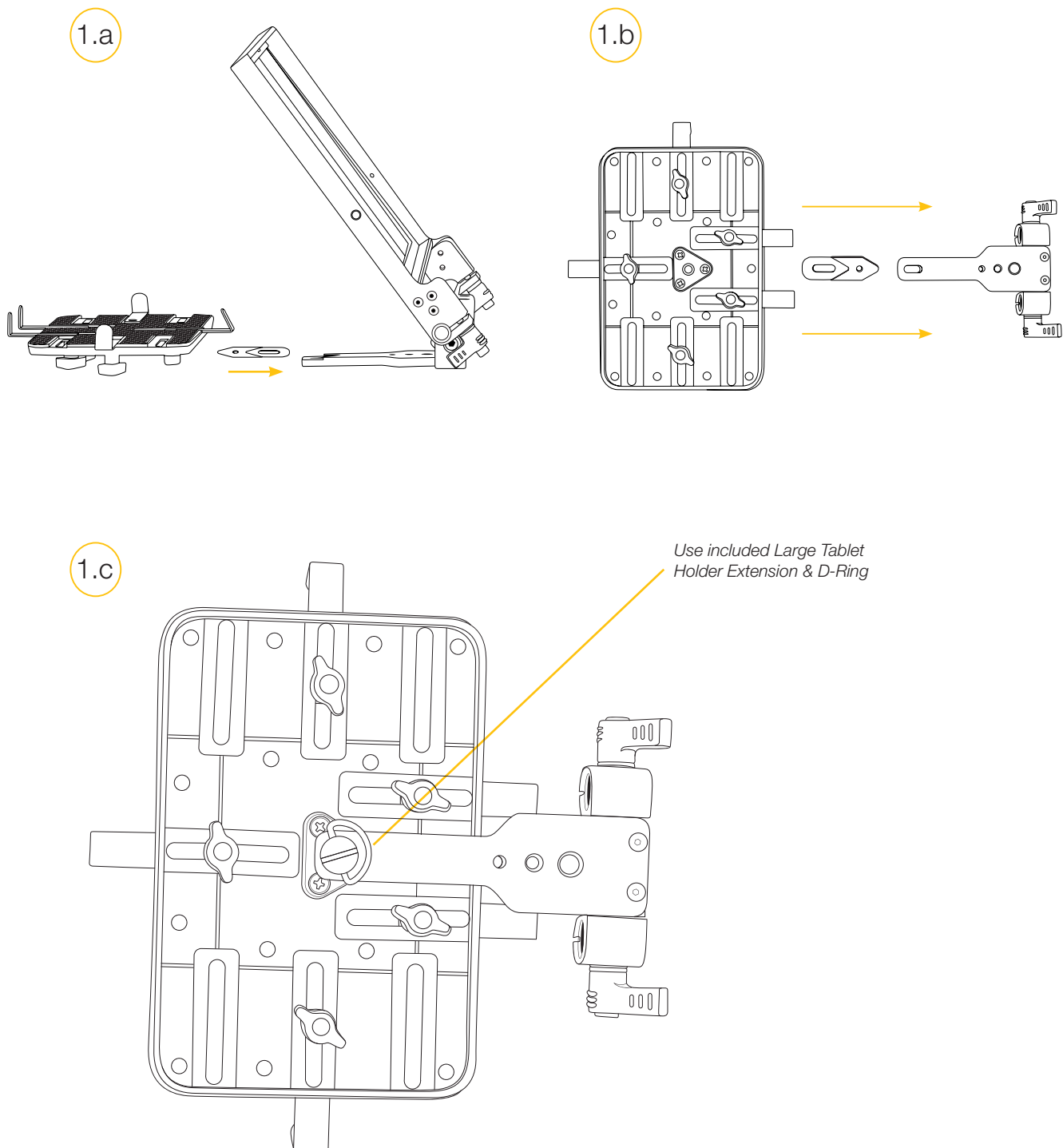
☐ Tablet Holder



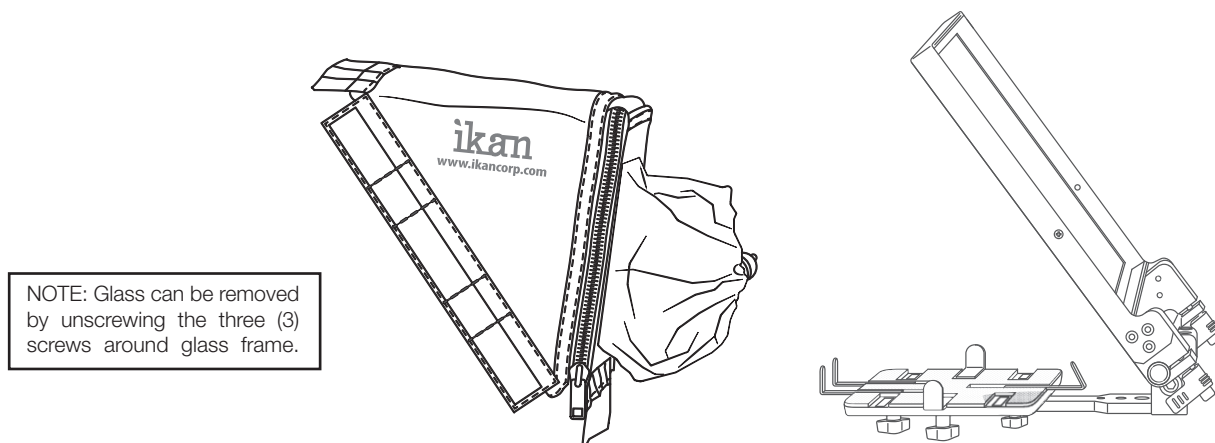
☐ Large Tablet Holder Extension & D-Ring

How to Assemble

1. Attach tablet mount to glass frame assembly. Figures 1a, 1b, 1c.



Tighten & loosen thumb screws to adjust glass frame. Ideal angle is 45 degrees.
Attach magnetic hood to glass frame.



DO NOT THROW AWAY FOAM INSERT.

The PT-ELITE-LS comes packaged in high quality custom-cut foam. It is sized perfectly to fit inside a waterproof case.

Software Options

Windows: Choose from PrompterPro from Ikan, or from multiple third party options in the Windows Store or on the Web.

iOS: Download Ikan Elite Prompter App from App Store

Android: Choose from multiple 3rd party options on Google Play Store

Specifications

Fixture Specifications	
Build Material	Aluminum / Steel
Dimensions	22 x 10.5 x 12 in.
Reading Range	20 ft
Shipping Dimensions	7 x 16 x 20 in.
Shipping Weight	10 lbs

Optional Accessories

Some other products that work well with the PT-ELITE-LS available from Ikan include:

PT-CASE-ELITE
ELITE-REMOTE

Rolling Hard Case for Teleprompters (PT-ELITE, PT1200)
Bluetooth Teleprompter Remote for PT-ELITE Prompters

Learn More

More dynamic information at official website: www.ikancorp.com

Support

Contact email: support@ikancorp.com

CONDITIONS OF WARRANTY SERVICE

- Free service for one year from the day of purchase if the problem is caused by manufacturing errors.
- The components and maintenance service fee will be charged if the warranty period is expired.

Free Service will not be Provided in the Following Situations:(*Even if the product is still within the warranty period.)

- Damage caused by abuse or misuse, dismantling, or changes to the product not made by the company.
- Damage caused by natural disaster, abnormal voltage, and environmental factors, etc.

©2018 ikan Corporation. All rights reserved





Quick Start Guide

ELITE REMOTE



Quick Start Guide

Thank you for purchasing the ELITE Remote – Bluetooth iPad teleprompter remote. Please follow these simple instructions to get started.

Downloading Compatible Apps

1. Go to the App Store on your tablet



2. Locate the search bar at the top right corner and key in the name of one of our compatible apps.



Teleprompter Premium

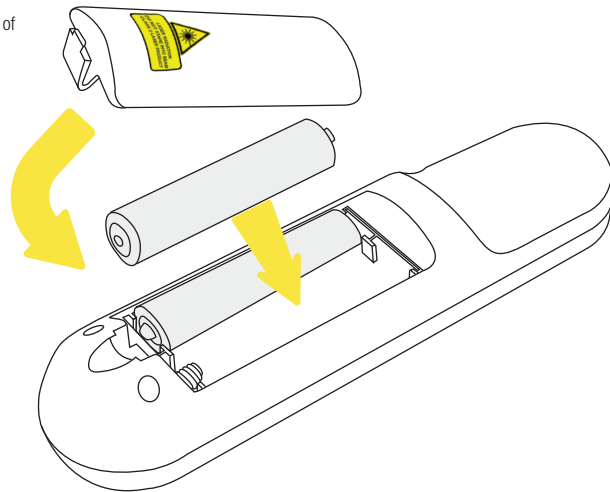


Teleprompt+ 3

3. Select the app and install it.

Inserting battery into ELITE Remote

1. Remove the battery on the back of the remote
2. Insert 2 AAA batteries into the battery compartment
3. Re-install the battery cover




Troubleshooting

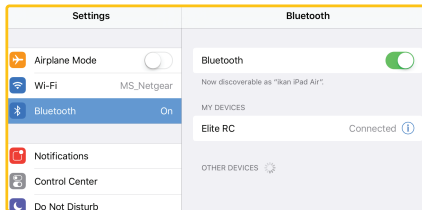
If you have any issues with the ELITE Remote, please call us at 1.713.272.8822 Monday through Friday 9:00 am to 6:00 pm CST. Or you can email us at support@ikancorp.com.

Copyright Ikan 2018



Syncing ELITE Remote to your iPad

1. Go to the "Settings" app on your iPad 
2. Select the Bluetooth tab on the left side and confirm the Bluetooth option is on (switch will toggle green).
3. Turn on the remote by inserting 2 AAA batteries into the battery compartment. A red light should blink momentarily on the front side of the remote.



4. Press and hold the "Rewind & Forward" button for 3 seconds to sync the remote. A blue light should blink momentarily on the front side of the remote.
5. The words "Elite RC" should appear on your iPad. Select it.
6. Once connection between the iPad and the remote has been established, the status message next to "Elite RC" should change to Connected.

Re-establishing connection with your iPad

Once you sync your iPad and Elite remote, your iPad will always remember the Elite Remote. To re-establish connection, simply turn on the remote, press any button, and wait a few seconds. The remote will automatically re-establish connection with your iPad.

Controlling your iPad with ELITE Remote

