



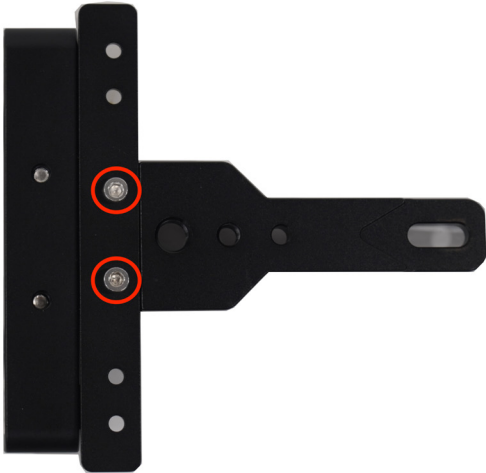
What's Included

- ☐ 1 x Teleprompter Base
- ☐ 1 x Bracket with Glass
- ☐ 1 x Magnetic Teleprompter Hood with Boot
- ☐ 1 x Dual Sided Riser
- ☐ 1 x 15mm Rod Adapters
- ☐ 1 x Tablet Extender
- ☐ 1 x Tablet Holder
- ☐ 1 x ¼"-20 D-Ring
- ☐ 2 x Hex Keys
- ☐ 2 x Screws

Assmebly Setup

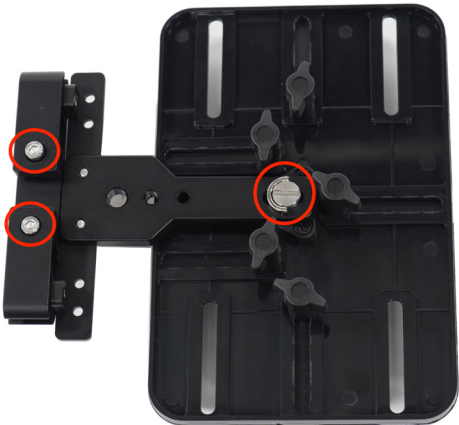
Step 1

Connect the 15mm rod monitor adapter to the tablet extender.



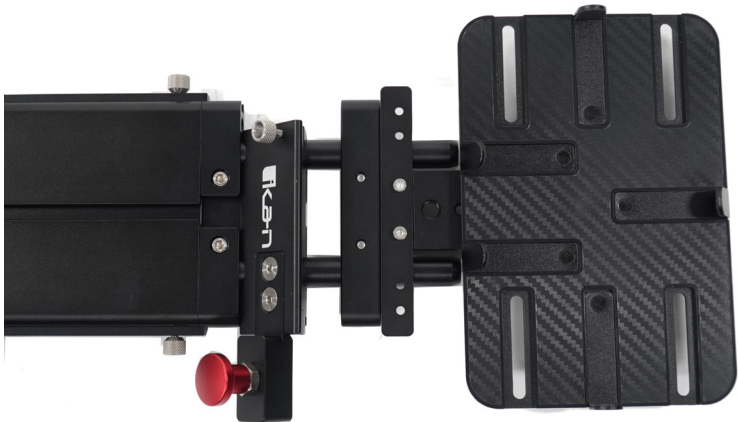
Step 2

Connect the tablet holder to the extender with the D-ring. Loosen the two rod clamps on the rod adapters.



Step 3

Slide the rod adapter into the teleprompter base.



Step 4

Pull the red knob to insert the teleprompter bracket with glass into the teleprompter base.



Step 5

Tighten the silver knob to hold the teleprompter bracket in place.



Step 6

Attach the magnetic teleprompter hood with boot.



Step 7

Slide the dual sided riser into the directional channel of the teleprompter base. Larger or taller cameras should insert the lower side facing glass, while smaller cameras should insert with higher side.



Specifications

Build Material	Aluminum / Steel
Reading Range	11-14 ft. (depending on tablet size)
Beamsplitter Material	70/30 Glass
Tripod Mount Type	3 x 1/4"-20 Female 3 x 3/8"-16 Female
Min. Tablet Dimensions	9" x 6" / 22.9 x 15.4 cm
Max. Tablet Dimensions	13" x 9" / 33 x 22.9 cm

Features

- Supports Larger iPad, Android, and Windows Tablets
- Min Tablet Size: 6" x 9" - Max Tablet size: 9" x 13"
- Works with Apple iPad and iPad Pro
- Fits many different sized camera
- Easy balancing with adjustable base
- 15mm Rod Based for Versatility and Ease of Use
- Solid CNC Machined Aluminum Construction
- Ships in Custom Foam for Hard Case



Learn More

More dynamic information at official website: www.ikancorp.com

Support

Contact email: support@ikancorp.com

CONDITIONS OF WARRANTY SERVICE

- Free service for one year from the day of purchase if the problem is caused by manufacturing errors.
- The components and maintenance service fee will be charged if the warranty period is expired.

Free Service will not be Provided in the Following Situations: (Even if the product is still within the warranty period.)

- Damage caused by abuse or misuse, dismantling, or changes to the product not made by the company.
- Damage caused by natural disaster, abnormal voltage, and environmental factors, etc.

©2020 Ikan International. All rights reserved.





Quick Start Guide

ELITE-REMOTE



Quick Start Guide

Thank you for purchasing the ELITE-REMOTE – Bluetooth iPad teleprompter remote. Please follow these simple instructions to get started.

Downloading Compatible Apps

1. Go to the App Store on your tablet



2. Locate the search bar at the top right corner and key in the name of one of our compatible apps.



Teleprompter Premium

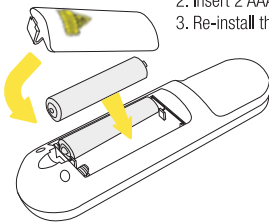


Teleprompt+ 3


3. Select the app and install it.

Inserting battery into ELITE-REMOTE

1. Remove the cover on the back of the remote
2. Insert 2 AAA batteries into the battery compartment
3. Re-install the battery cover



Syncing ELITE-REMOTE to your iPad

1. Go to the "Settings" app on your iPad 
2. Select the Bluetooth tab on the left side and confirm the Bluetooth option is on (switch will toggle green).
3. Turn on the remote by inserting 2 AAA batteries into the battery compartment. A red light should blink momentarily on the front side of the remote.



4. Press and hold the "Rewind & Forward" buttons (above the "Laser Pointer Button") for 3 seconds to sync the remote. A blue light should blink momentarily on the front side of the remote.
5. The words "Elite RC" should appear on your iPad. Select it.
6. Once connection between the iPad and the remote has been established, the status message next to "Elite RC" should change to Connected.

Re-establishing connection with your iPad

Once you sync your iPad and ELITE-REMOTE, your iPad will always remember the ELITE-REMOTE. To re-establish connection, simply turn on the remote, press any button, and wait a few seconds. The remote will automatically re-establish connection with your iPad.

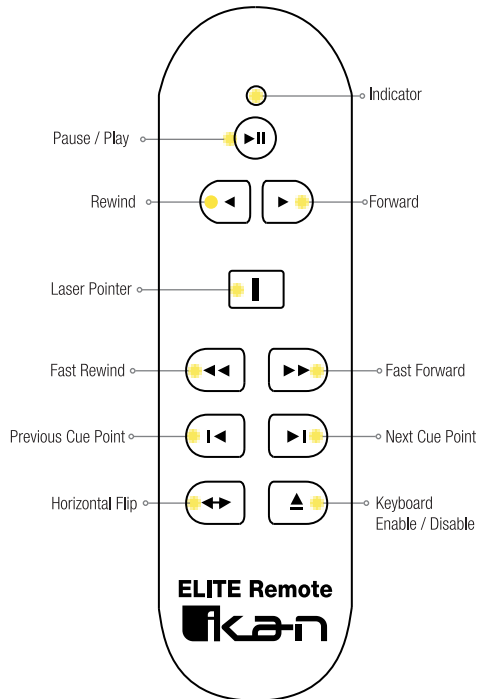
Troubleshooting

If you have any issues with the ELITE-REMOTE, please call us at 1.713.272.8822 Monday through Friday 9:00 am to 6:00 pm CST. Or you can email us at support@ikancorp.com.

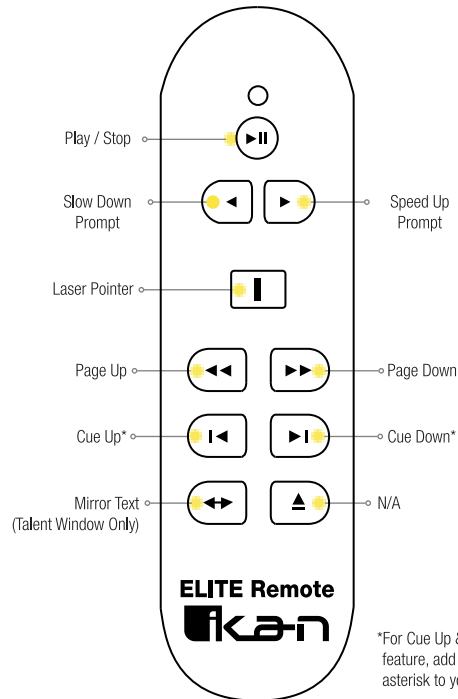
Ikan International 2022. All Rights Reserved.



Controlling your iPad with ELITE-REMOTE



PrompterPro4 Control



*For Cue Up & Down feature, add an asterisk to your script