

PowerSlide X Plus User's Manual



FEDERAL COMMUNICATIONS COMMISSION (FCC) STATEMENT

FEDERAL COMMUNICATIONS COMMISSION (FCC) STATEMENT

This Equipment has been tested and found to comply with the limits for a class B digital device, pursuant to Part 15 of the FCC rules. These limits are designed to provide reasonable protection against harmful interference in a residential installation. This equipment generates uses and can radiate radio frequency energy and, if not installed and used in accordance with the instructions, may cause harmful interference to radio communications. However, there is no guarantee that interference will not occur in a particular installation. If this equipment does cause harmful interference to radio or television reception, which can be determined by turning the equipment off and on, the user is encouraged to try to correct the interference by one or more of the following measures:

- Re-orient or relocate the receiving antenna.
- Increase the separation between the equipment and receiver.
- Connect the equipment into an outlet on a circuit different from which the receiver is connected to.
- Consult the dealer or an experienced radio/TV technician for help.

Warning:

Use only shielded signal cables to connect I/O devices to this equipment. You are cautioned that changes or modifications not expressly approved by the party responsible for compliance could void your authority to operate the equipment.

TABLE OF CONTENTS

Getting Started	<i>click</i>
Quick Installation Guide (QIG)	<i>click</i>
Installing Scanning Software	
Installing Hardware	
General Information	<i>click</i>
Removing jammed slide from the top access door	<i>click</i>
Technical Support	<i>click</i>

GETTING STARTED

Check the package content before getting started.

For Quick Installation please refer to Quick Installation Guide. (Ref. Pg. 6)

Important! Save the original box, receipt and packing material for future shipping needs.

Package Contents

Slide Scanner

50 Slide Magazine

Power Adapter (comes in 2 pcs)

USB Cable

Warning!

Using any other power adapter or slide trays may severely damage the scanner and will void the product warranty.

GENERAL GUIDANCE:

Connect the scanner directly using the USB cable provided.

Do not use a hub or USB extension cable. Only use the USB ports on the rear of desktop computers.

If there are any other devices (multifunction device, printers, scanners, webcam) connected to the computer through USB, disconnect or power them off.

A minimum of 2GB RAM (Win/Mac) is required.



Operating Ambient Temperature Range

50° to 104°F (10° to 40°C)

Note: Do not turn on the scanner unless it is within this range. If the scanner has been stored or transported outside of this range, allow it to return to within this range before turning it on.

Operating Ambient Humidity Range 15% to 76%

Relative humidity (non-condensing)

Note: If the scanner is stored or to be transported in cold temperature and then brought into a warm / humid environment condensation may occur

This device is designed solely for private use and is not intended for commercial use.

QUICK INSTALLATION GUIDE

INSTALLING - CyberView X- for PC (Windows) User

a. Download the driver/Software to operate the scanner from this link [SCANNER SOFTWARE](https://www.scanace.com/sd.php?pid=&cid=&pcid=21)

Click link or copy and paste: <https://www.scanace.com/sd.php?pid=&cid=&pcid=21>

Once downloaded go to the folder where you saved the download and double click the file to install follow the onscreen prompts to complete the installation process.

CyberView X- for MAC

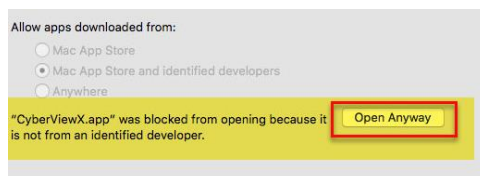
a. Download the driver/Software to operate the scanner from this link

<https://www.scanace.com/sd.php?pid=&cid=&pcid=21>

Click link or copy and paste: <https://www.scanace.com/sd.php?pid=&cid=&pcid=21>

Once downloaded go to the folder where you saved the download and double click the file to install follow the onscreen prompts to complete the installation process.

NOTE: Apple systems may display a warning that the software was from unidentified developer because it was not downloaded from the Apple Store, once you run the installer, if you see this warning, next click on the Apple icon – System Preferences – Security & Privacy – Look for the message CyberView X attempted to run, Select Open Anyways



NOTE: Make sure the scanner is NOT connected to the computer during the CyberView X driver installation.

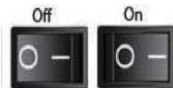
b. Restart computer once the installation process is complete.

Installing the Hardware

a. Connect the slide scanner to a power source. The hardware drivers automatically loaded with the CyberView X installation process.

1. Locate the power switch on the lower left side of the scanner. Make sure the scanner is TURNED OFF.

Circle in OFF / Line in ON



2. Plug the AC adapter into an AC power source FIRST before plugging it into the scanner.

3. Attach the USB cable to the computer using the standard USB adapter end. Attach the USB adapter end of the cable to back panel of the scanner.

3a. When using USB 3.0, Mini Port (USB-C) it may be necessary to use a hub if you experience connectivity issues i.e. Scanner hangs on calibrating please wait or if it freezes mid-scan, please see [this document](#) for more information

b. Ensure the scanner does NOT have a slide magazine loaded, turn the scanner ON. The calibration cycle on the scanner will start automatically and will take several minutes to complete. A green light will flash while the calibration is in progress.

The slide transport arm will move in and out of the scanner.

MAKE SURE THERE IS ENOUGH ROOM IN FRONT OF THE SCANNER FOR THE SLIDE TRANSPORT ARM TO EXTEND FULLY; DO NOT PUSH THE ARM BACK DURING CALIBRATION.

GENERAL INFORMATION

ALL Trays: Load slides with the SHINY side facing the right side of the tray, this will result in a backwards scanned image, but due to the hardware design this is necessary to obtain the best scan quality. Images can be flipped using 3rd party image editing software

Supported Slide Trays:

PIE Dark gray tray (bundled), the aftermarket **Braun PAXIMAT Magazine 50** (Gray- for Glassless Slides up to 2mm Thick - MFR #15062)

CS Magazine (European) for CS/CS2-mounted slides (European design) 50 slide maximum version ONLY)

NO OTHER BRANDS OF TRAYS OR CAROUSELS SUPPORTED

Glass slides that are attached to glass frames may cause complications due to the hard edges and thickness and cannot be batch scanned, no slides with mounts that are thicker than 3mm can be scanned.

METAL SLIDES: Cardboard slides mounted into metal frames, these not supported, they **MUST** be un-mounted from the metal frames

Loading slide(s) into the magazine(s)

Gray Magazine (Bundled tray) or aftermarket Paximat Magazine (gray)

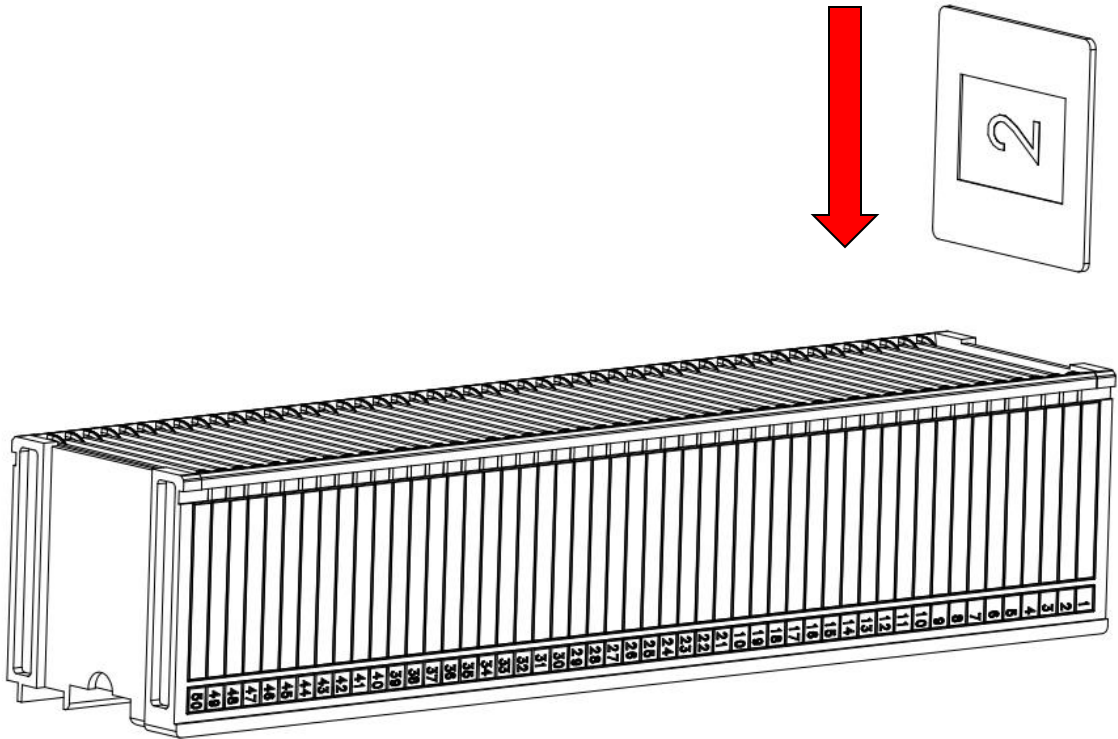
a. Locate the numbering sequence text on the top of the slide magazine indicating the slide order. The numbers should be facing up and starting from the left.

b. Hold the slide right side up, facing forward so the image is NOT reversed. Rotate the slide as illustrated below (180 deg) and Insert each slide, one at a time, into the magazine slots. Essentially they will be inserted upside down and backwards, they will require flipping in an image editing program



PIE & Braun Paximat Magazines

#2 on the slides in this drawing represents the emulsion side of the slide film, this faces the #50 in the tray. This method of insertion will result in backward image scans due to the mechanical design of the unit, they will need to be flipped using an image editing program back to the proper orientation.

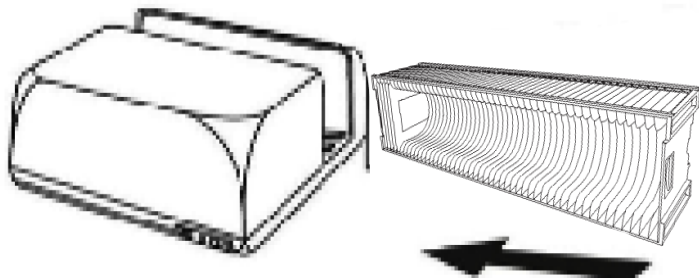


WARNING: Load slides into the magazine properly and make sure the slide mounts are in good condition. Improperly inserted slides or slides with distorted/damaged slide mounts may cause the scanner to jam and potentially damage both the slide and the scanner.

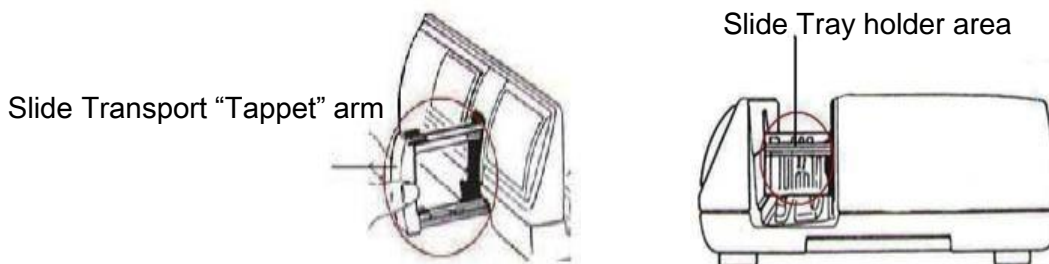
NOTE: Orientation of scanner in these diagrams is viewed from the back of the unit. Take note that the magazine slide opening also faces towards the back of the scanner for correct orientation when loading into the scanner.

Inserting the trays - Bundled & Braun Paximat Magazines

Slide order numbers printed on top of magazine the large opening you load the slides into faces the back of the device., This tray needs to be level otherwise it will not insert and appear to be blocked by a small black tab on the bottom of the tray area, if it hits this the tray is not level, it needs to guide in straight and touch the “Slide Transport” Tappet scanning arm



Place the slide magazine into the scanner from the left side until it touches the slide transport arm and the magazine “clicks” into place.



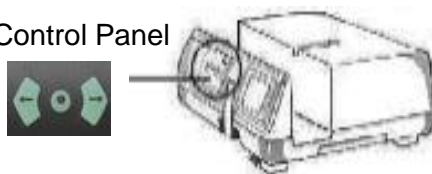
Additional hardware features....

Manual Front Control Panel – Push buttons on the front of the scanner

a. You can advance or reverse the slide tray by pressing the navigation buttons or scan manually using the scan button to perform one button scanning, CyberView X must be open to use this button.

NOTE: When installing your new scanner onto a Windows system that already has another USB Flatbed scanner or All-in-one Scan/Copier/Printer device installed, it may be necessary for you to power off or even disconnect or the other scanner from the USB port for the Film scanner to work properly,

Manual Control Panel




One Button Scan (PC ONLY)

1. Open the CyberView X application ([Download Link](#))

2. Configure Scan Settings

Configure the scan settings: Select the Scan to directory, file format (TIF or JPG) Magic Touch/Auto Color etc. (Refer to CyberView User Manual Pg.13 and 16), once configured, Press the

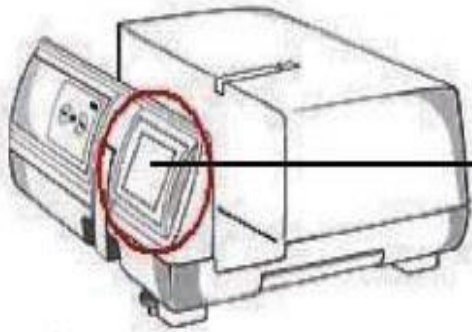
scanner button () to begin scanning.

NOTE: If you do not open CyberView X FIRST, the scan button will not function.

c. Slide Viewer – Backlit slide viewer (Not scanning display) The scanner has a built in mini light panel which

allows the slides to be manually previewed with a backlight before inserting into the tray for scanning.

Insert the slide into the slide viewer for previewing. The scanner has to be switched on. Gently press down on the top of the slide to engage the back light for viewing the slide.



Mini light table **VIEWING**
Panel does not display
prescanned/scanned image



Removing a jammed slide from inside the scanner

1. Close the CyberView X scanning software
2. Turn off the scanner power, disconnect the power cable from the back of the unit
3. Remove the cap from the slide retrieval area (Fig. 1)
4. Next remove the inner slide aligner (Fig 2.) by lifting straight up and out

Fig. 1

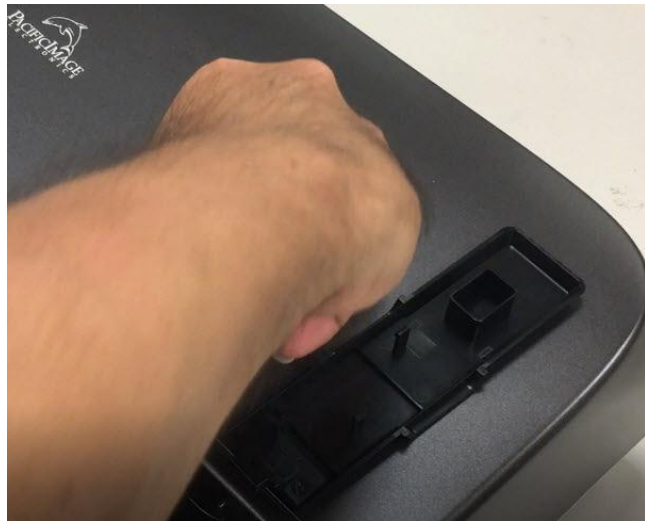


Fig. 2 Lift up and out



5. Now you have access to the inside, using thin tweezers
Reach inside and grab the stuck slide (Fig. 3)



Fig. 3



6. Once stuck slide has been retrieved, replace slide aligner, and cover back onto the scanner.

TECHNICAL SUPPORT

For information regarding the film scanner and CyberView X driver, please visit <http://www.scanace.com/>

For additional Troubleshooting an tips click [here](#)

Transporting the device

For safety purposes, follow the procedure below before transporting the scanner (i.e. before moving the scanner from one location to another or packing and shipping the unit):

1. Plug in the power adapter Turn on the power switch.
2. Wait for the scanner to warm up (around 3 minutes).
The LED indicator will always blink during warm up.
3. After LED indicator turns ON solid, turn off the power switch.