



SPIDER V 20 MkII

PILOT'S GUIDE ►

**Supplier's Declaration of Conformity
47 CFR § 2.1077 Compliance Information**

Unique Identifiers: Line 6® Spider® V 20, Line 6® Spider® V 20 MkII

Responsible Party - U.S. Contact Information:

Yamaha Guitar Group, Inc.
26580 Agoura Road
Calabasas, CA 91302-1921
(818) 575-3600
<https://line6.com/>

FCC Compliance Statement:

This device complies with Part 15 of the FCC Rules. Operation is subject to the following two conditions: (1) This device may not cause harmful interference, and (2) this device must accept any interference received, including interference that may cause undesired operation.

© 2026 Yamaha Guitar Group, Inc. All rights reserved.

Line 6, the Line 6 logo, Spider, Relay, and FBV are trademarks or registered trademarks of Yamaha Guitar Group, Inc. in the U.S. and/or other jurisdictions. Apple, iPhone, iPod, Lightning, and macOS are trademarks of Apple Inc., registered in the U.S. and other countries. Apple is not responsible for the operation of this device or its compliance with safety and regulatory standards. iOS is a trademark of Cisco, registered in the U.S. and other countries. Android is a trademark of Google LLC. Windows is a trademark of Microsoft Corp. registered in the U.S. and other countries. Cubase and ASIO are registered trademarks of Steinberg Media Technologies GmbH.

The Model and Serial numbers can be found on the product label. Please record these numbers below and retain this document for your records.

Model No: _____

Serial No: _____

SPIDER V MkII AMPLIFIERS - SPECIFICATIONS

Features	SPIDER V 20 MkII	SPIDER V 30 MkII	SPIDER V 60 MkII	SPIDER V 120 MkII	SPIDER V 240 MkII	SPIDER V 240HC MkII
Amp Models	78	78	78	78	78	78
Cabinet Models	23	23	23	23	23	23
Effect Models	101	101	101	101	101	101
Amplifier Wattage	20 watts	30 watts	60 watts	120 watts	240 watts (120 w/per side)	240 watts (120 w/per side)
Mono/Stereo	Mono	Mono	Mono	Mono	Stereo	Stereo
Speaker Size	1 x 8" 4Ω	1 x 8" 4Ω	1 x 10" 4Ω	1 x 12" 4Ω	2 x 12" 4Ω	2 x 4" 16Ω
Tweeter Configuration	None	1	1	1	2	2
XLR Direct Outs	No	No	No	Yes	Yes	Yes
USB Audio Interface	USB Micro B	USB A + USB B	USB A + USB B	USB A + USB B	USB A + USB B	USB A + USB B
Headphone Output	1/8" Stereo	1/8" Stereo	1/8" Stereo	1/4" Stereo	1/4" Stereo	1/4" Stereo
FBV™ Support	No	Yes	Yes	Yes	Yes	Yes
Drum Loops	No	Yes	Yes	Yes	Yes	Yes
Metronome	No	Yes	Yes	Yes	Yes	Yes
Looper	No	No	Yes	Yes	Yes	Yes
Relay Wireless Ready	No	No	Yes	Yes	Yes	Yes
External Speaker Outs	No	No	No	No	No	Yes
Weight (kg)	5.00	7.35	9.30	12.70	21.05	13.00
Dimensions (mm)	331 x 310 x 211	392 x 380 x 208	442 x 430 x 230	520 x 489 x 271	684 x 550 x 271	684 x 276 x 271

All specifications are subject to change.

For details on other Spider V and Spider V MkII amplifier models, please see the *Spider V Family Pilot's Guide*, available at: www.line6.com/manuals.

Overview

Welcome to the *Spider V 20 MkII Pilot's Guide*. This guide contains descriptions of the Line 6® Spider® V 20 and Spider V 20 MkII amplifiers' features and functionality.

The Spider V 20 MkII amplifier is the fifth generation guitar amp from the Spider family. It features the diverse quality of Line 6 amp modeling in a compact combo form factor.

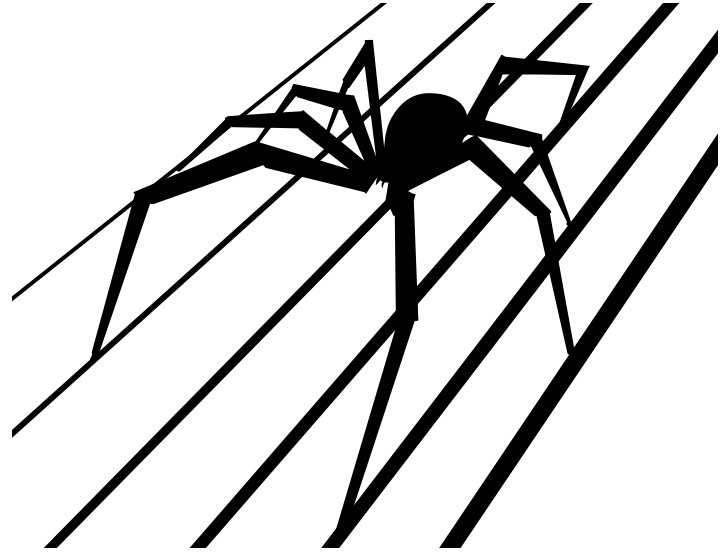
Features:

- Over 200 available amps and effects models (full access requires use of the *Spider V Remote* software)
- Extended-range speaker system delivers excellent tone for electric guitar, acoustics and music playback
- 4 simultaneous effects, including 3 Smart FX
- Built-in Tuner
- Enhanced preset for acoustic guitars
- USB Audio Interface - playback with macOS & PC computers, or iOS* & Android™** mobile devices
- Expanded editing & preset librarian functionality with use of the free *Spider V Remote* application for macOS & PC computers, or iOS* & Android** mobile devices
- Upgradable firmware using the *Line 6 Updater* software for macOS and PC computers
- Stereo headphone output

Expanded Features with use of the Spider V Remote App

- Utilize additional simultaneous effects
- Perform fast visual editing of all available amp & effects models and parameters
- Access and search for thousands of tones on the cloud
- Create, save and share unlimited guitar tones
- Control every aspect of your tone to get the perfect sound

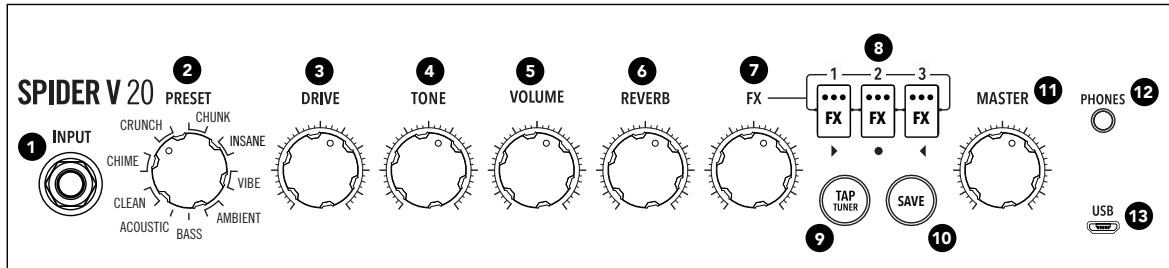
- Create a backup all your Spider V amp tones, and restore from the backup at any time



*iOS device operation requires use of Apple USB Camera Connection Kit, sold separately. iOS version 10 or greater is required.

**Requires Android™ OS 5.0+ or newer with High Performance Audio and micro USB 2.0 OTG (On-The-Go) host mode adapter, sold separately. Check line6.com/android for more information.

Controls and Connections



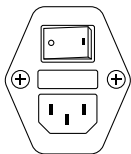
1. **INPUT Jack** – Plug in your guitar here.
2. **PRESET Encoder** – Turn to select one of the 16 available presets. A preset stores the value of each knob, as well as the FX 1, 2 & 3 model types and their bypass states.
3. **DRIVE Knob** – Drive is like the volume or gain knob on other amps; it controls how much “dirt” or “distortion” you get in your sound.
4. **TONE Knob** – This knob is a macro control for the overall tonal settings for each amp, utilizing bass, mid and treble controls under-the-hood. Turn this down for a warmer tone, or up for a brighter sound, with a flatter or “scooped” sound at 12 o’clock.
5. **VOLUME Knob** – Controls the volume of the preset independently of the **MASTER Volume Knob**. Use this knob to match volumes between presets.
6. **REVERB Knob** – Controls the mix and depth of the Reverb effect. Turn it up or down for more or less ambience.
7. **FX Knob** – Controls how much of each of the three enabled on-board effects are applied. To adjust a particular effect amount, select and enable the desired effect using the three FX Buttons.
8. **FX 1, 2 & 3 Buttons** – These buttons select and control the bypass state of the three on-board effects. The **FX Knob** controls how much of the currently selected effect is applied to the sound.

There are five different types of effects available, with each type displaying a corresponding color: yellow for Dynamics/Compression, orange for Distortion, blue for Modulation, green for Delay/Echo, and purple for Filter/Pitch/Synth.

9. **SAVE Button** – Press to store the values of the knobs and state of the FX buttons within the currently selected preset.
10. **TAP/TUNER Button** – Tapping this button a few times sets the tempo of your delay and modulation effects in use.
Pressing and holding this button for 2 seconds engages the Tuner. The Tuner mutes the guitar signal and utilizes the three FX Buttons’ lights to indicate your pitch by displaying red on the left (flat), red on the right (sharp) or green in the middle (in-tune). Press the **TAP/TUNER** button once to exit the Tuner.
11. **MASTER Volume Knob** – You can choose the overall volume of the amplifier (or headphones, if connected), without affecting the overall tone or saturation. **Always start with the MASTER knob set to minimum!**
12. **PHONES Output** – Connect a pair of headphones here. When you do so, the speaker is muted. This jack also doubles as a direct output. Use a stereo TRS cable to connect to a mixer or recording device.
13. **USB (Micro B connector)** – Connect a macOS, PC, iOS device (with Apple USB Camera Connection Kit) or Android device (with OTG adapter), to edit tones using the *Spider V Remote* application, or to playback and record audio.

AC Power

The amplifier's **Power Switch** and **AC Connector**, for use with the included power cable, are located on the rear panel of the amplifier. Please see the amplifier's rear panel markings for electrical information.



Changing Presets

Turn the **PRESET Encoder** to choose the desired preset. Each preset is designed for a particular style or application and includes one type of amp model, the 3 Smart FX and their settings.

Editing Your Tone

Select the preset from which you wish to base your tone and use the knobs and buttons to modify the sound to your liking (see "Controls and Connections" for details). The Drive, Tone, Volume, Reverb amount, Effects amounts and their bypass states can all be modified using the controls on the front panel of the amplifier. You can utilize the *Spider V Remote* editor application to further modify the type of amp or effects you want to use within the preset.

Saving Presets

Save your settings to the current **PRESET Encoder** location by pressing the **SAVE** button once. The **SAVE** button will blink twice to indicate the preset is now saved. You can utilize the *Spider V Remote* app to copy or rearrange your presets.

Using Smart FX

A built-in Reverb effect as well as 3 assignable Smart FX per preset are included.

The assignable Smart FX types are Dynamics (yellow), Drives (orange), Modulation (blue), Delay (green), and Filter/Pitch/Synth (purple). There are multiple models to choose from for each effect type. You can utilize the *Spider V Remote* app to change the effect type or model.

1. Press the **FX Buttons 1-3** to turn each effect on or off. When illuminated brightly, the effect is on (enabled). When an effect is off (bypassed), it is lit dimly.
2. The **FX Knob** controls how much of the effects are being applied. This only applies to whichever effects that are currently enabled, all at once. To modify only a single effect's amount, turn off the other two effects. This control functions in a relative manner, so you may have to move it back and forth to find the right amount.
3. Once you are pleased with the amount of the effects, press the **SAVE Button** to retain these settings as part of the preset.

Using the Spider V Remote Application for macOS & PC

Spider V Remote is a FREE editor and librarian application for macOS and PC, available at <https://line6.com/software>. To connect a Spider V amp to your computer, use a standard USB-A to USB-Micro B cable or adapter (not included). Simply install and launch the application and it will automatically sync up with your Spider V amplifier.



***NOTE:** For USB operation with Windows® computers, it is necessary to install the latest **Line 6 Spider V ASIO® driver** from <https://line6.com/software>. No driver installation is necessary for macOS computers.

Application Overview

The application displays a preset's contents within its three panels: the Signal Flow, Model Browser and Editor panels. The Signal Flow panel shows the various types of "blocks" that make up the current preset. All available amp & effects models are selectable within the Model Browser, arranged by type. All available parameters for the currently-selected block appear within the Editor, located in the lower right pane. To edit a parameter value, click and drag on the slider handles within the Editor panel.

Changing Amps and Effects

To change the model for any amp or effects block, select the block within the Signal Flow, then choose the desired model from the Model Browser.

Loading and Saving Presets

To save your tone from within the application, click the **LOAD/SAVE** button and select **Save Tone to Spider V**. The current preset slot will be highlighted. Alternatively, you may select a different save destination slot if desired. Click **Save** to complete the operation. To follow are additional options available from this menu for managing your Preset Library.

- **Save Tone to Spider V** – Saves the tone with all its current settings to a preset slot of your choosing.
- **Save Tone to Disk** – Saves the current tone to a folder on disk as an .l6p tone file.
- **Load Tone** – Loads a tone from disk, but does not save the tone to the current preset slot.
- **Import Tone to Spider V** – Loads a .l6p tone file from disk and saves it to a preset slot of the of your choosing.
- **Export Tone from Spider V** – Saves a different tone than the one currently loaded to a folder on disk.
- **Back Up Spider V to File** – Creates a "bundle" backup file which includes all the tones currently loaded on your Spider V amp and saves the file to disk.

- **Restore Spider V from File** – Overwrites all presets on your Spider V amp with the tones in the backup file from disk.

Using Spider V Remote on iOS and Android Devices

Spider V Remote is also offered as a FREE editor, librarian and updater app for iOS and Android mobile devices. The functionality of the mobile application is very similar to that of the *Spider V Remote* macOS & PC application (please see preceding section).

For iOS Devices - An Apple USB Camera Connection Kit adapter is required for connecting to your Spider V amp's USB port. The *Spider V Remote* mobile app is available free from the Apple App Store.

For Android Devices - An Android "On-The-Go" (OTG) Adapter is required for connecting to your Spider V amp's USB port. The *Spider V Remote* mobile app is available free from the Google Play™ store.

Steinberg Cubase® LE Recording Software

To get your FREE copy of *Steinberg Cubase LE* software for macOS or PC, please register your Spider V amplifier at <https://line6.com/account/registergear/>. Once registered, you'll receive a software activation code and download link on the online registration page.

Spider V 20 MkII Amplifier Firmware Updates

For optimal performance, always run the latest firmware in your **Spider V 20** or **Spider V 20 MkII** amplifier. The *Spider V Remote* mobile application will inform you whenever a firmware update is available, so you'll always know you have the latest version! If a firmware update is available, you can perform the update from within the *Spider V Remote* mobile application - just follow the prompts to complete the update on your connected Spider V amplifier.

If your Spider V amp is connected to a macOS or Windows computer, you'll need use the *Line 6 Updater* application to check for and perform firmware updates - available free from <https://line6.com/software>. The *Line 6 Updater* app contains all instructions for successful firmware updates, and best of all, completes the update in just a few minutes.