



OWNER'S MANUAL

LG Cloud Device Thin Client

Please read this manual carefully before operating your set and retain it for future reference.

CL600W

CL600N

CL600I

CL601W

CL601N

CL601I



* M F L 7 0 5 4 3 2 3 2 *

(2209-REV10)

Printed in Taiwan

www.lg.com

Copyright © 2019 LG Electronics Inc. All Rights Reserved.

SAFETY INSTRUCTIONS

- Please make sure the device is installed near the wall outlet to which it is connected and that the outlet is easily accessible.
- As long as this unit is connected to the AC wall outlet, it is not disconnected from the AC power source even if the unit is turned off.
- Be sure to use power cords and AC adapters provided or approved by LG Electronics, Inc.
- Do not use this equipment near water such as near a bathtub, washbowl, kitchen sink, laundry tub, in a wet basement, or near a swimming pool.
- Equipment is provided with ventilation openings in the cabinet to allow the release of heat generated during operation. If these openings are blocked, built-up heat can cause failures which may result in a fire hazard. Therefore, NEVER:
 - Block the bottom ventilation slots by placing the Equipment on a bed, sofa, rug, etc.
 - Place the equipment in a built-in enclosure unless proper ventilation is provided.
 - Cover the openings with cloth or other material.
 - Place the equipment near or over a radiator or heat source.
- There is a risk of explosion if a battery is replaced with incorrect type.

OPEN SOURCE SOFTWARE NOTICE INFORMATION

(Only CL600W, CL601W, CL600I, CL601I)

To obtain the source code under GPL, LGPL, MPL, and other open source licenses, that is contained in this product, please visit <http://opensource.lge.com>.

In addition to the source code, all referred license terms, warranty disclaimers and copyright notices are available for download.



LG Electronics will also provide open source code to you on CD-ROM for a charge covering the cost of performing such distribution (such as the cost of media, shipping, and handling) upon email request to opensource@lge.com.

This offer is valid for a period of three years after our last shipment of this product.

This offer is valid to anyone in receipt of this information.

LICENSE

Each model has different licenses. Visit www.lg.com for more information on the license.

| | |
|--|--|
|  | <p>The SuperSpeed USB Trident logo is a registered trademark of USB Implementers Forum, Inc.</p> |
|  <p>(Wi-Fi/Bluetooth supported models only.)</p> | <p>The Bluetooth® word mark and logos are registered trademarks owned by Bluetooth SIG, Inc. and any use of such marks by LG Electronics Inc. is under license. Other trademarks and trade names are those of their respective owners.</p> |

ASSEMBLING AND PREPARING

BIOS

CAUTION

- BIOS Password: Without the registered password, access to the system will be denied. Write down and keep the password in a safe place.
- SSD Password: If you forgot SSD Password, you cannot restore the SSD.
- The replacement of SSD due to a forgotten SSD Password is not covered by warranty.

Supported Drivers, Software and Language pack install guide

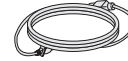
- You can download the latest version for installation on the LG Electronics website (www.lg.com).

Product Composition

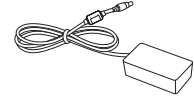
Please check whether all the components are included in the box before using the product. If there are any missing components, contact the retailer where you purchased the product.



Owner's Manual/Regulatory Manual/Cards



Power cord

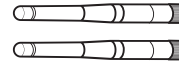


Adapter

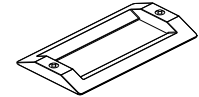


Bracket / Screws

- ① (2 ea, M3 x L5)
- ② (4 ea, M4 x L10)
- ③ (2 ea, M3 x L7)



Wifi Antenna
(Wi-Fi/Bluetooth supported models only.)



Stand Base

CAUTION

- Only use an approved LG power adapter.
- Damage caused by other power adapters is not covered by warranty.

NOTE

- Note that the components may look different from those shown here.
- Without prior notice, all information and specifications in this manual are subject to change to improve the performance of the product.

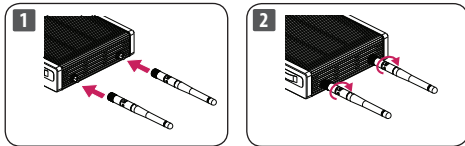
Product Installation

! CAUTION

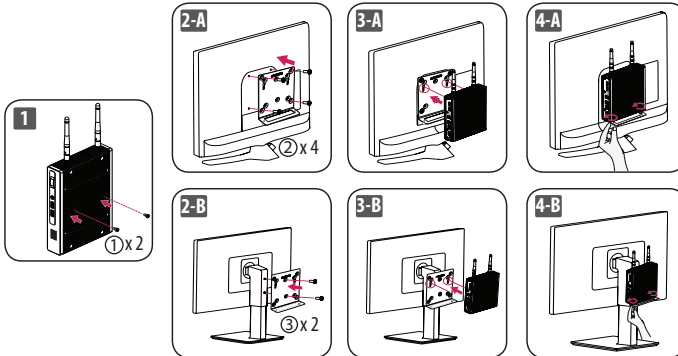
- Illustrations in this document represent typical procedures, so they may look different from the actual product.
- Applying excessive force when tightening screws may cause damage to the Cloud Device. Damage caused in this way will not be covered by the product warranty.
- The product may not be mounted on some monitors with mount bracket.
 - In this case, use the product in horizontal or vertical position.
- When connecting the peripherals after mounting the product on the monitor, be sure to hold the product.

1. Assembling the Wifi Antenna

(Wi-Fi/Bluetooth supported models only.)



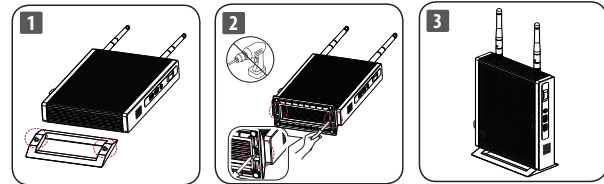
2-1. Mounting on the Back of the Monitor



! CAUTION

- When installing the system on the back of the monitor, please keep stability in mind. (Recommended for monitors that weigh 6.2 kg (13.6 lbs) or less.)

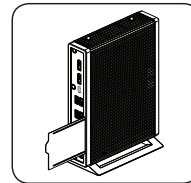
2-2. Assembling the Stand base



! CAUTION

- When the product is used upright, it must be tighten the stand.

Check the ID Label Slot



! NOTE

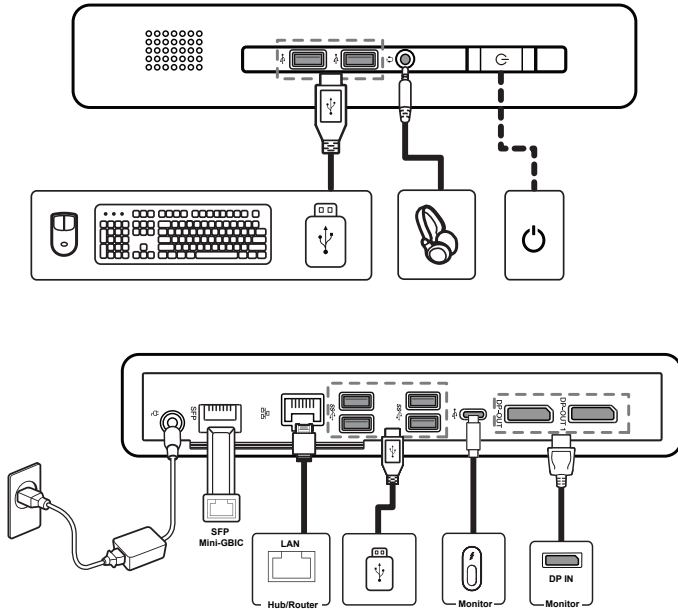
- Standard certification can be found by pulling the ID Label Slot.

Using the Kensington Lock

For more information on installation and usage, refer to the Kensington lock owner's manual or visit the website at <http://www.kensington.com>.

Parts and Buttons

Connection



! NOTE

- Some games (online, 3D, 2D) may not be supported, and some high-resolution videos (including Full HD and some HD videos) may stutter during playback.
- DP-OUT1 Limitation
 - Supported Resolution: 2560 x 1080 (Maximum)
 - A monitor connected to this port cannot support the Audio output.
 - When using the DP to HDMI converter, use the (Active Type) DP to HDMI converter.
- SFP Module (SFP supported models only.)
 - Only supports 1 Gbps module. (155 Mbps, 10 Gbps (SFP+) are not supported)
 - When you choose the SFP module, refer to the compatibility list by SFP vendor.
 - Use the same SFP module to connect both devices.
 - Devices are sold separately.
- Headphone Port (4-pole ear microphone port)
 - The 4-pole ear microphone port supports US 4-pole standards, but not the European 4-pole ear microphone.
 - When using ear microphone (or Bluetooth® headset), audio input and output are directed to the connected device and the microphone and speaker on PC do not work.
 - The 4-pole ear microphone port does not support external microphone.
- This product is intended to be supplied by a Listed Power Adapter or DC power source, output rated 19 Vdc, 3.42 A (AC/DC adapter) or 20V, 3 A (Type-C Power Delivery in) and compiled LPS.
- If further assistance is needed when purchasing the power source, please contact the brand owner or agency for further information.

PRODUCT SPECIFICATION

| | | | |
|-------------------------------------|---|---|-----------------------------------|
| AC/DC Adapter | Manufacturer: APD Model: DA-65G19 Output: 19V --- 3.42 A | | |
| Power Consumption (Typical) | Off Mode: 0.9 W * Sleep Mode: 1.1 W * Idle Mode (Display Off): 5 W * Idle Mode (Display On): 5 W * | | |
| Environmental Conditions | Operating Conditions | Temperature | 10 °C to 35 °C (50 °F to 95 °F) |
| | | Humidity | 20 % ~ 80 % |
| | Storing Conditions | Temperature | -20 °C to 60 °C (-4 °F to 140 °F) |
| | | Humidity | 10 % ~ 90 % |
| Dimensions (Width x Depth x Height) | With Stand | 209 x 137 x 67 (mm) 8.2 x 5.3 x 2.6 (inches) | |
| | Without Stand | 199 x 137 x 35 (mm) 7.8 x 5.3 x 1.3 (inches) | |
| Weight (Without packaging) | With Stand | 820 g (1.8 lbs) | |
| | Without Stand | 800 g (1.7 lbs) | |

Specifications are subject to change without notice.

* The Operating Mode of Power Consumption is measured with ENERGY STAR® test standard and follow OS (Windows 10 IoT Enterprise LTSB 2016 (RS1)).

Wireless module (AC9560NGW) Specifications

(Wi-Fi/Bluetooth supported models only.)

| Wireless LAN (IEEE 802.11a/b/g/n/ac) | |
|--------------------------------------|---------------------|
| Frequency Range | Output Power (Max.) |
| 2400 to 2484 MHz | 20.0 dBm |
| 5150 to 5350 MHz | 20.0 dBm |
| 5470 to 5725 MHz | 23.0 dBm |
| 5725 to 5850 MHz | 13.98 dBm |
| Bluetooth | |
| Frequency Range | Output Power (Max.) |
| 2400 to 2500 MHz | 9.5 dBm |

- As band channels can vary per country, the user cannot change or adjust the operating frequency. This product is configured for the regional frequency table.
- For consideration of the user, this device should be installed and operated with a minimum distance of 20 cm between the device and the body.
- FCC ID: PD99560NG / IC: 1000M-9560NG

ENERGY STAR complied product

(Only CL600W, CL601W)

ENERGY STAR is a joint program of the U.S. Environmental Protection Agency and the U.S. Department of Energy helping us all save money and protect the environment through energy efficient products and practices.

The products with the ENERGY STAR logo comply with the ENERGY STAR standard, and the power management feature is enabled by default.

The monitor and computer are automatically set to sleep after 10 and 30 minutes of user inactivity. To wake your computer, click the mouse or press any key on the keyboard.

Please visit <http://www.energy.gov/powermanagement> for detail information on power management and its benefits to the environment. In addition, please visit <http://www.energystar.gov> for detail information on the ENERGY STAR joint program.



- For EPEAT (EPEAT applied model)

Spare parts are available for 5 years after the end of production.

Spare parts include base assembly, adapter and cables.

It may differ by model, you can get the more information by visiting to this website: <https://lgparts.com>

WARNING: This equipment is compliant with Class A of CISPR 32. In a residential environment this equipment may cause radio interference.

The model and serial numbers are located on the product. Record them below in case you ever need service.

Model

Serial No.

Supplier's Declaration of Conformity

| | |
|-------------------|--|
| Trade Name | LG |
| Responsible Party | LG Electronics USA, Inc. |
| Address | 111 Sylvan Avenue, North Building, Englewood Cliffs, NJ 07632 |
| E-mail | lg.environmental@lge.com |

(Only CL600W, CL601W)



ENERGY STAR® is a set of power-saving guidelines issued by the U.S. Environmental Protection Agency (EPA).
As an ENERGY STAR® Partner LGE U. S. A., Inc. has determined that this product meets the ENERGY STAR® guidelines for energy efficiency.

Refer to ENERGYSTAR.gov for more information on the ENERGY STAR® program.