

TRIO & TRIO MAX

Portable Laptop Monitor

USER GUIDE

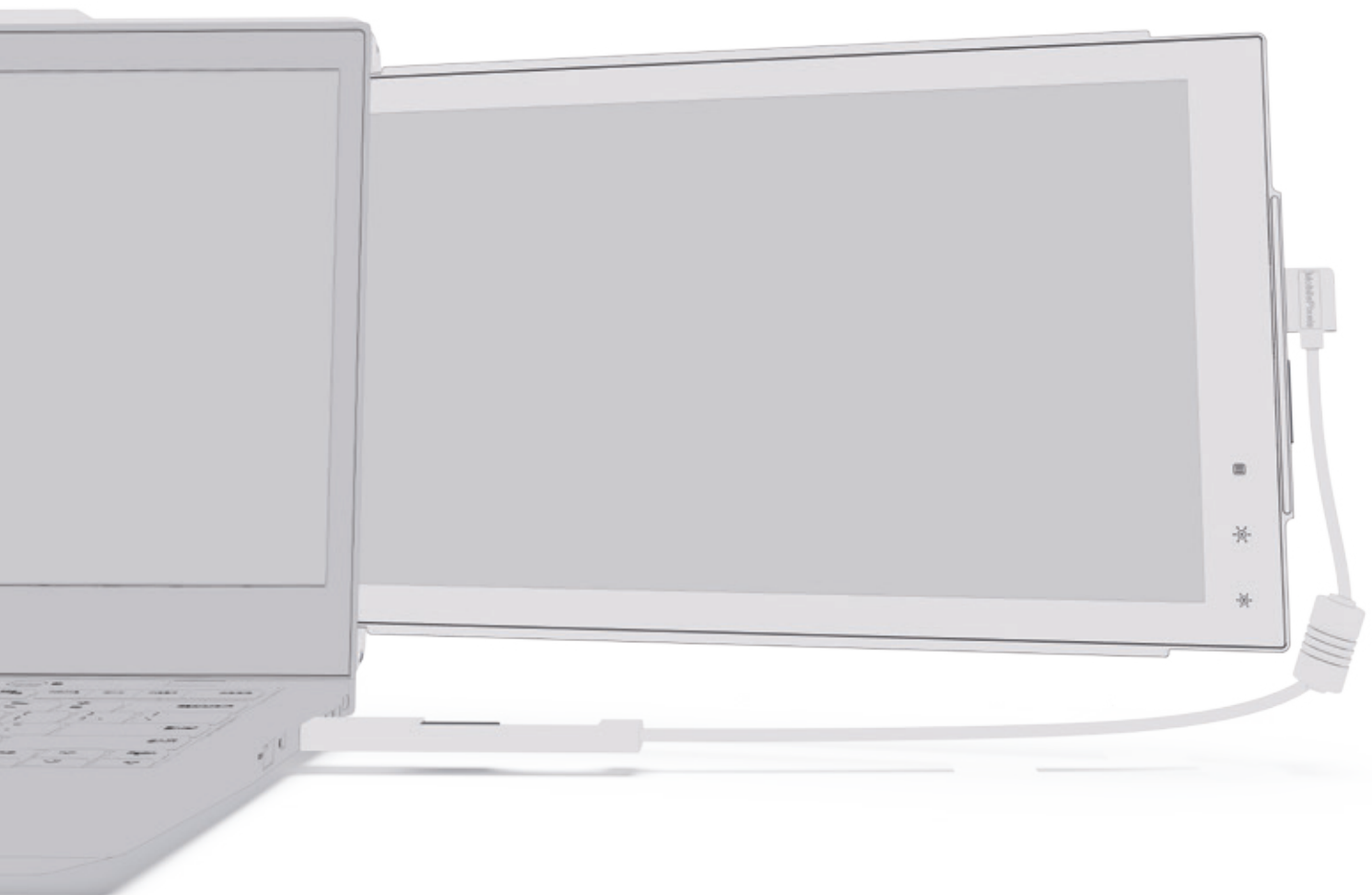


Table of content

SECTION 1: PACKAGE OVERVIEW

1.1	MONITOR	1
1.2	ACCESSORIES	1

SECTION 2: DRIVER INSTALLATION GUIDE

2.1	WINDOWS INSTALLATION GUIDE.....	2
2.2	MAC INSTALLATION GUIDE.....	3

SECTION 3: MONITOR POSITIONING GUIDE

3.1	ATTACHMENT MODE.....	4
3.2	PORTRAIT MODE	6
3.4	PRESENTATION MODE.....	7
3.5	THREE-SCREEN MODE	8

SECTION 4: DISPLAY SETTINGS

4.1	DUPLICATE MODE TO EXTEND MODE	9
4.1.1	WINDOWS SETTINGS	10
4.1.2	MAC OS SETTINGS	10
4.2	ROTATE DISPLAY AND LAYOUT SET UP.....	11
4.2.1	WINDOWS SETTINGS.....	11
4.2.2	MAC OS SETTINGS.....	12
4.3	CHANGE DISPLAY SETTINGS TO ADJUST CONTENT SIZE	13
4.3.1	WINDOWS.....	13
4.3.2	MAC OS	14

SECTION 5: TECHNICAL INFORMATION

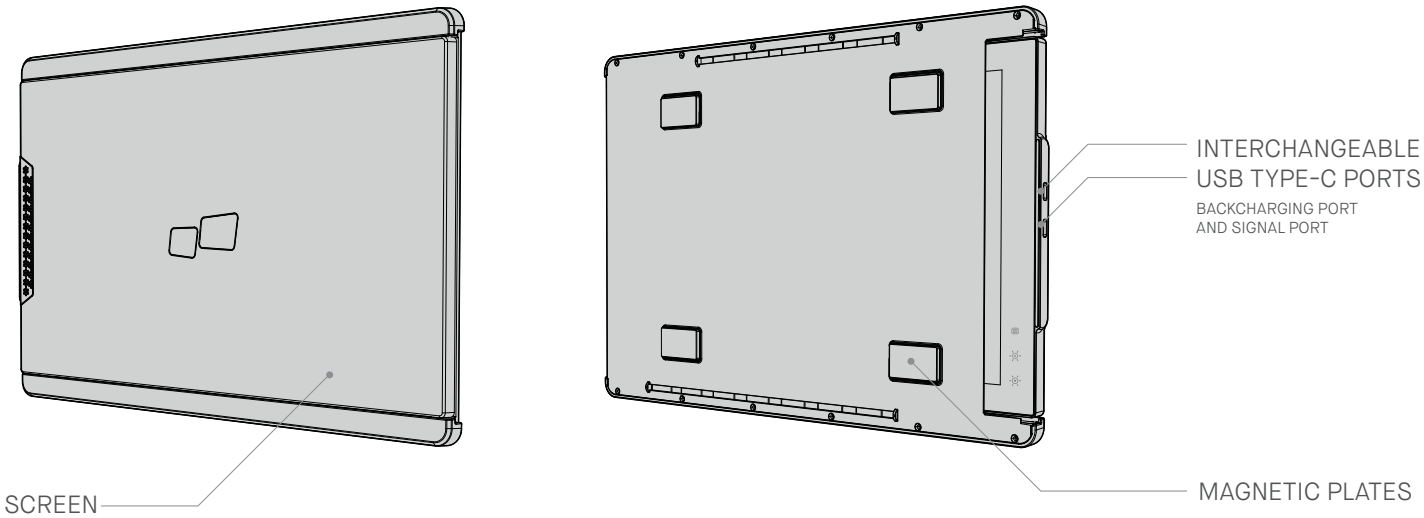
5.1	SPECIFICATIONS.....	16
5.2	REMOVING METAL PLATES	17

Safety information

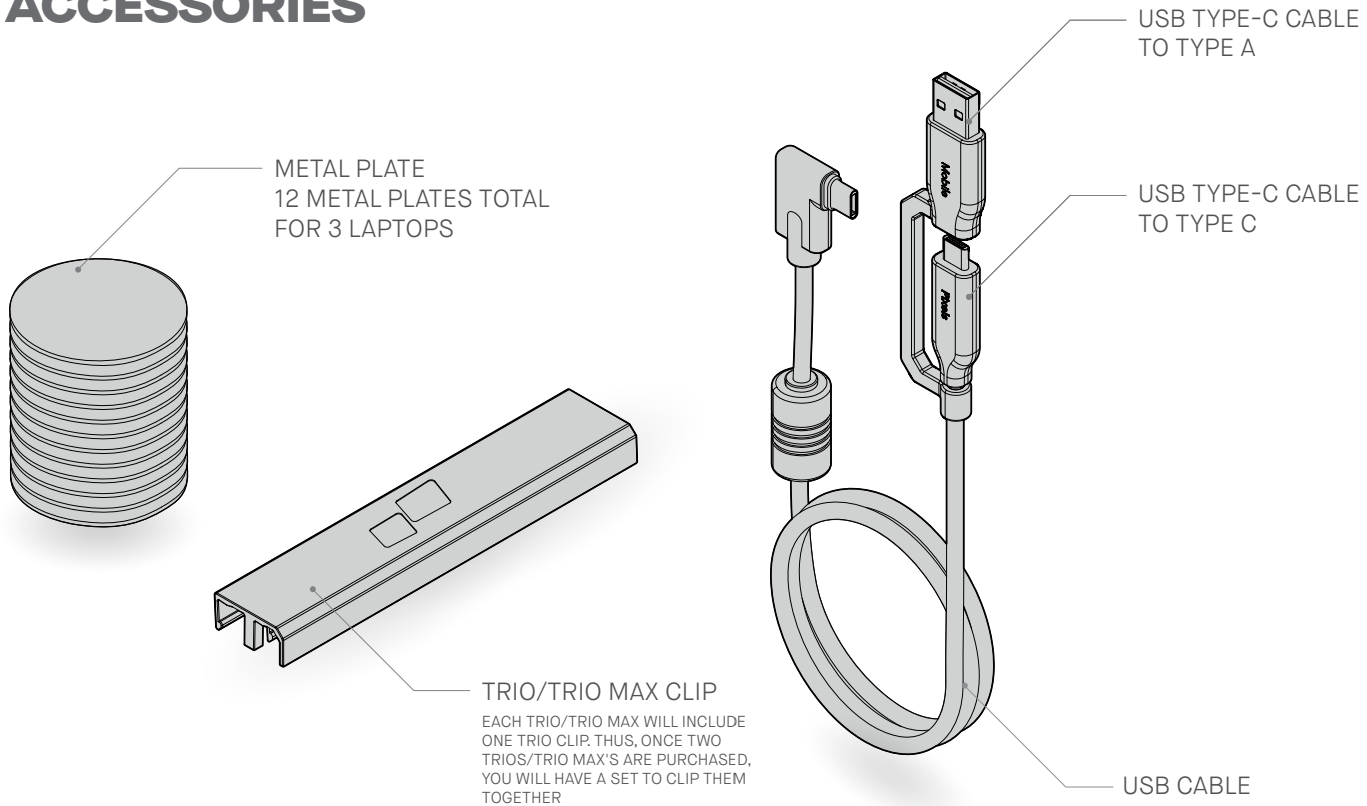
- Before setting up this Portable USB Monitor, carefully read all the documentation that came with the package.
- To prevent fire or shock hazard, never expose this Portable USB Monitor to rain or moisture.
- Never try to open this Portable USB Monitor cabinet.
- Before using this Portable USB Monitor, make sure all cables are correctly connected and the power cables are not damaged. If you detect any damage, contact your dealer immediately.
- Avoid dust, humidity, and temperature extremes. Do not place this Portable USB Monitor in any area where it may become wet. Place this Portable USB Monitor on a stable surface.
- Never push objects or spill liquid of any kind into the slots on this Portable USB Monitor cabinet.
- If you encounter technical problems with this Portable USB Monitor, contact a qualified service technician, your retailer or contact@mobilepixels.us

SECTION 1: PACKAGE OVERVIEW

1.1 MONITOR



1.2 ACCESSORIES



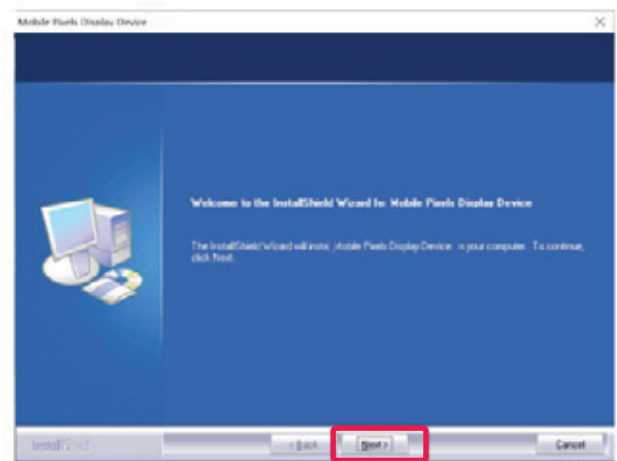
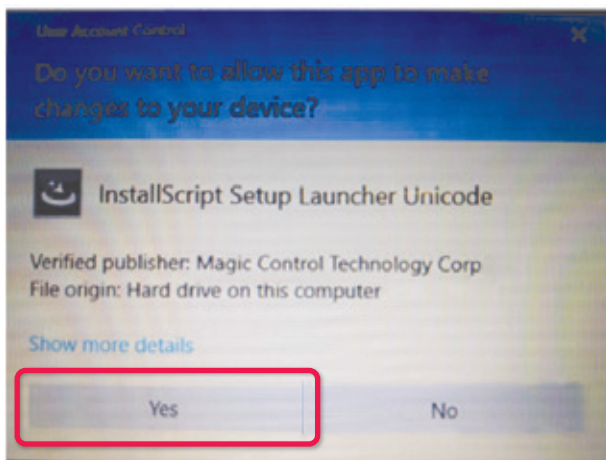
SECTION 2: DRIVER INSTALLATION GUIDE

When using USB C to connect, driver installation is not necessary.

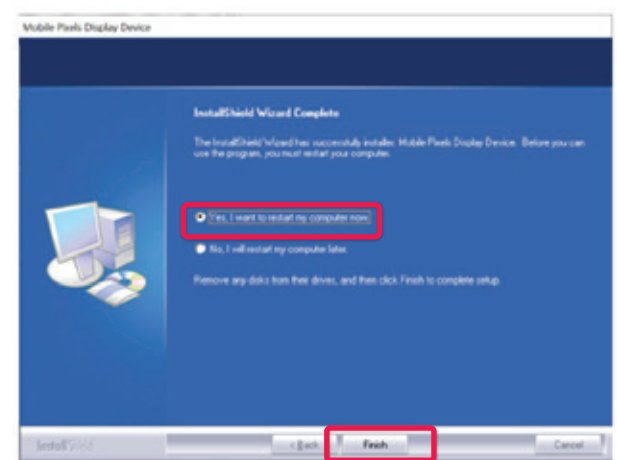
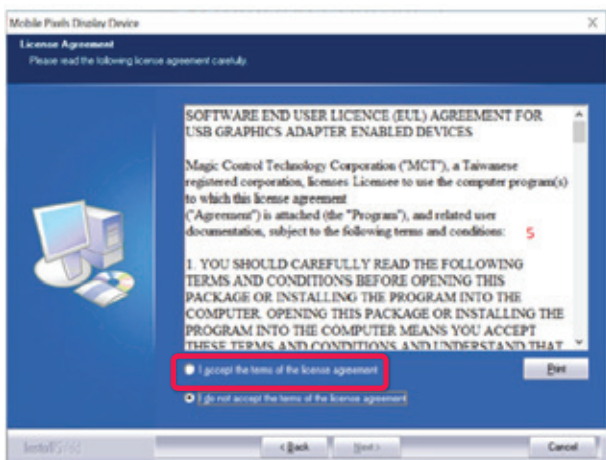
2.1 WINDOWS INSTALLATION GUIDE

Connect Windows Laptop to Mobile Pixels Trio/Trio Max Monitor, wait 20 secs and the monitor should turn on. In the event the monitor does not turn on, please follow the steps below:

1. Please download the correct windows driver from: **WWW.MOBILEPIXELS.US/PAGES/DOWNLOAD-DRIVERS**
2. Double click and launch the installer.
3. Click "Yes" in the window below.
4. Click "Next" in the Window below:



5. Please select "I accept the terms of the license agreement" and click Next
6. Please select "Yes, I want to restart my computer now" and click Finish



2.2 MAC INSTALLATION GUIDE

Do not plug the Mobile Pixels Device into your mac before executing the driver installation

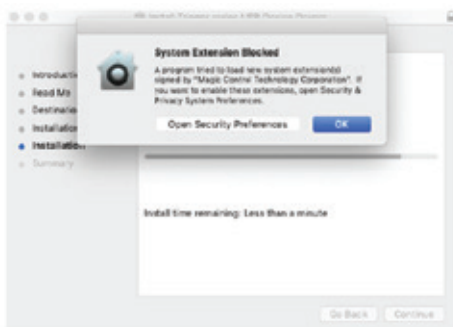
1. Please download the Mac driver from the link below.
Run the .pkg file to load the drivers to the mac folder

WWW.MOBILEPIXELS.US/PAGES/DOWNLOAD-DRIVERS

2. Click **"MP_Graphics_Driver_v1.0.0.pkg"**, please follow the instructions to install the device driver.



3. The system should pop-up a screen "System Extension Blocked" after installation asks the user to enable these extensions for the first time. Click **"Open Security Preference"** go to setting and restart the laptop.



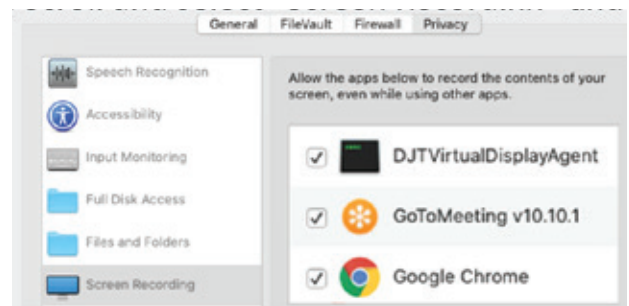
Important: This warning is not always shown. Even if it is not shown, for new installations the user must **"Allow"** to install the Mobile Pixels driver.



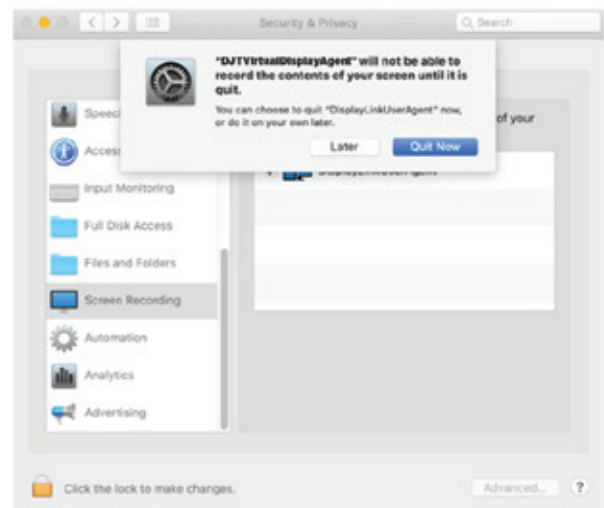
5. Go to System Preferences > Security & Privacy > Privacy

6. Click on the **Lock** to make changes

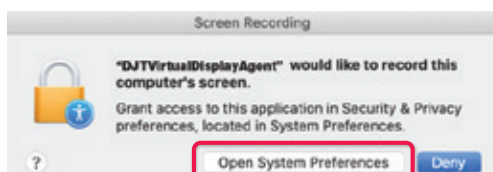
7. Scroll and select **"Screen Recording"** and check **"DJTVirtualDisplayAgent"**



8. Click on the **Lock** to save changes Click **"Quit Now"**

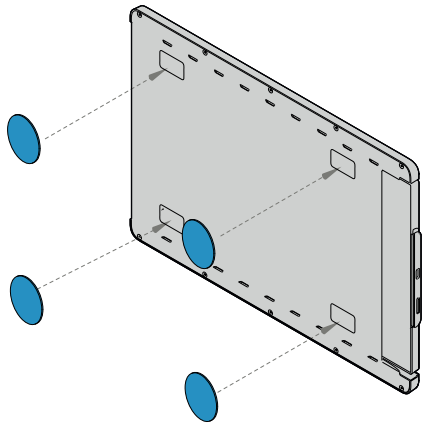


4. (After System Reboot) Connect Mobile Pixels device to Mac computer, a screen recording prompt should pop up **"Click Open System Preferences"**

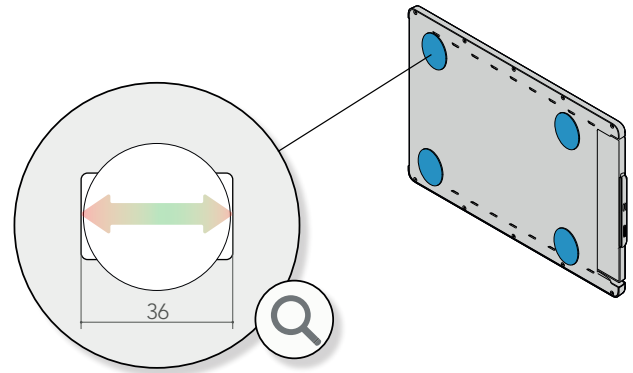


SECTION 3: MONITOR POSITIONING GUIDE

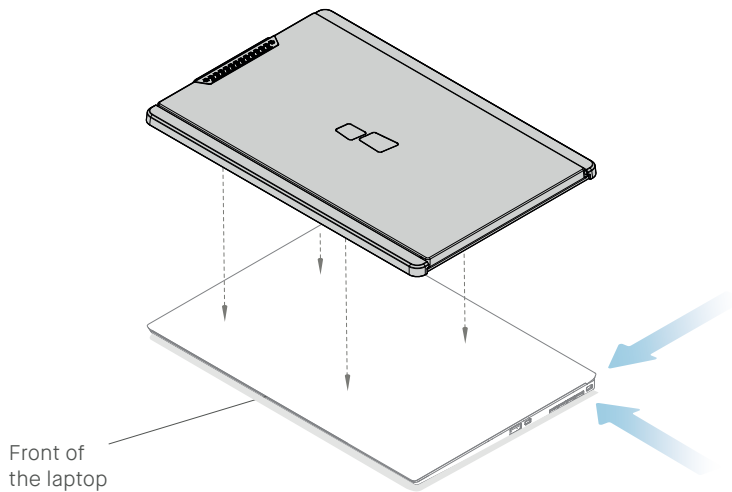
3.1 ATTACHMENT MODE



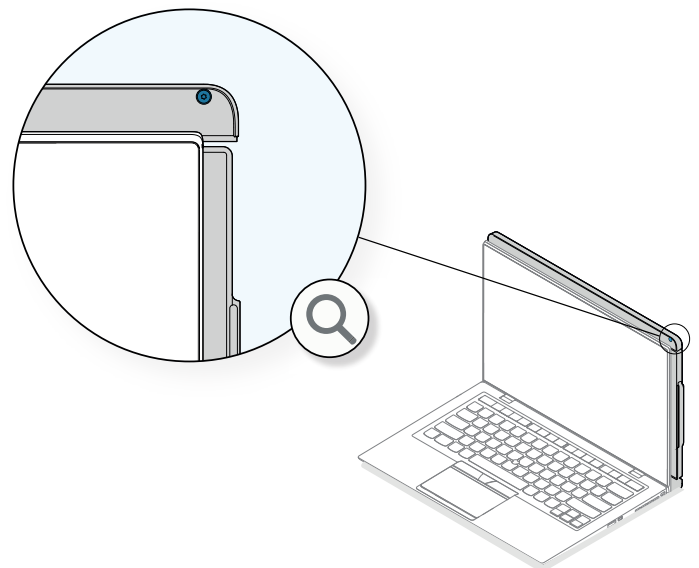
1. Place the metal plates (included in the box) over the magnets in the back of TRIO/TRIO MAX.



2. Make sure round plate is centered on the magnet

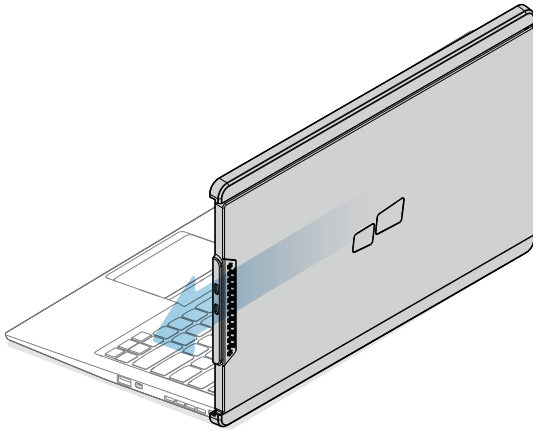


3. Once the metal plates are all placed, close your laptop and align TRIO/TRIO MAX.

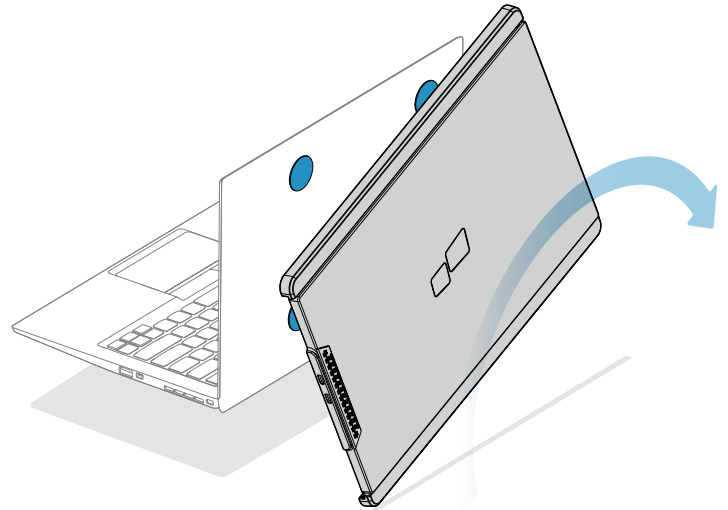


4. For a proper install try to match the right edge of TRIO/TRIO MAX with one screw exposed past the edge of the laptop.
Align bottom of TRIO/TRIO MAX to bottom of the laptop.

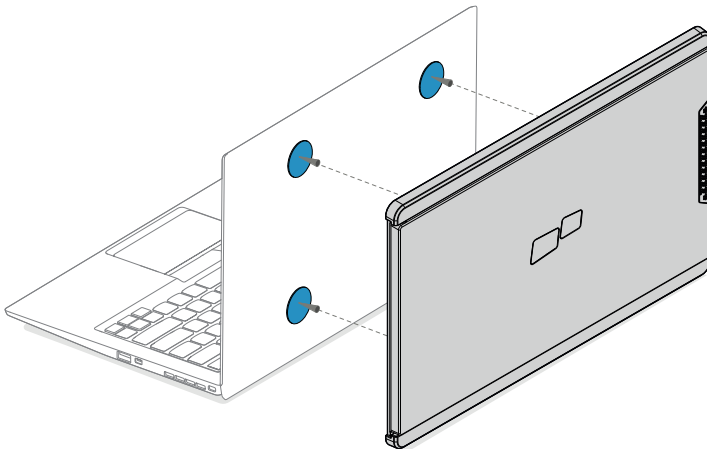
*USB Cable omitted



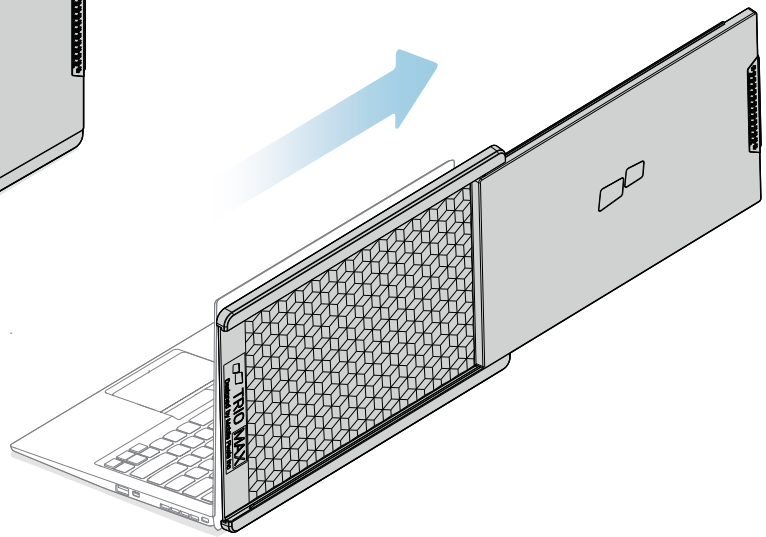
- 1.** To remove it, slide TRIO/TRIO MAX off of the magnets, do not pull.



- 2.** To use it on the other side, rotate 180 degrees.

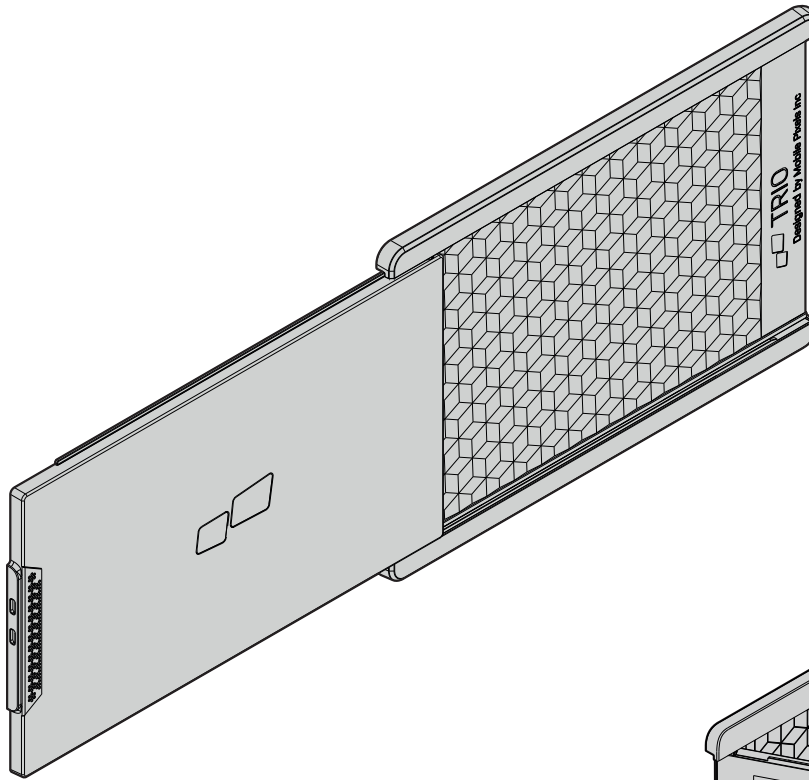


- 3.** Snap into the back of the laptop.

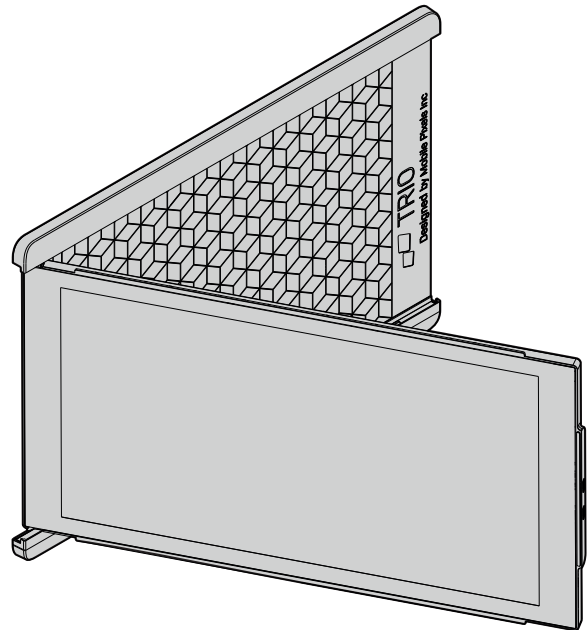


- 4.** You are ready to work.
*USB Cable omitted

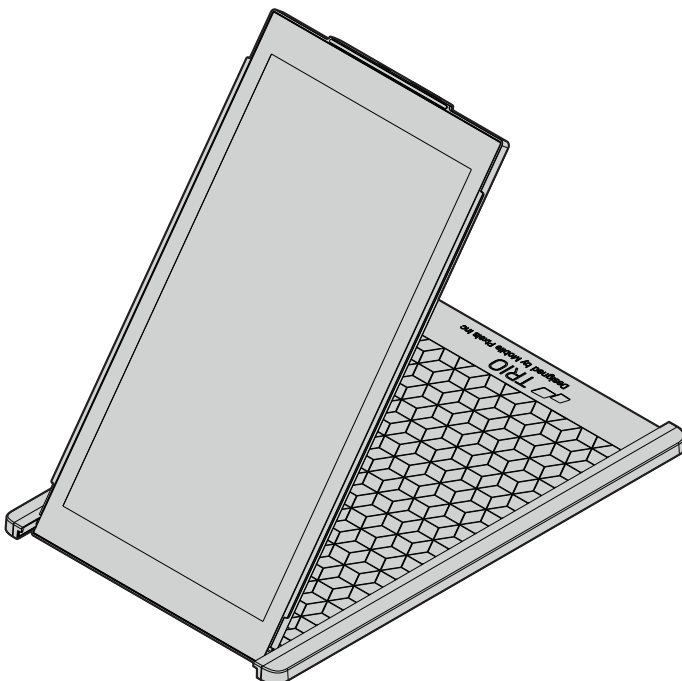
3.2 PORTRAIT MODE



1. Slide Trio



2. Rotate around 110° degrees

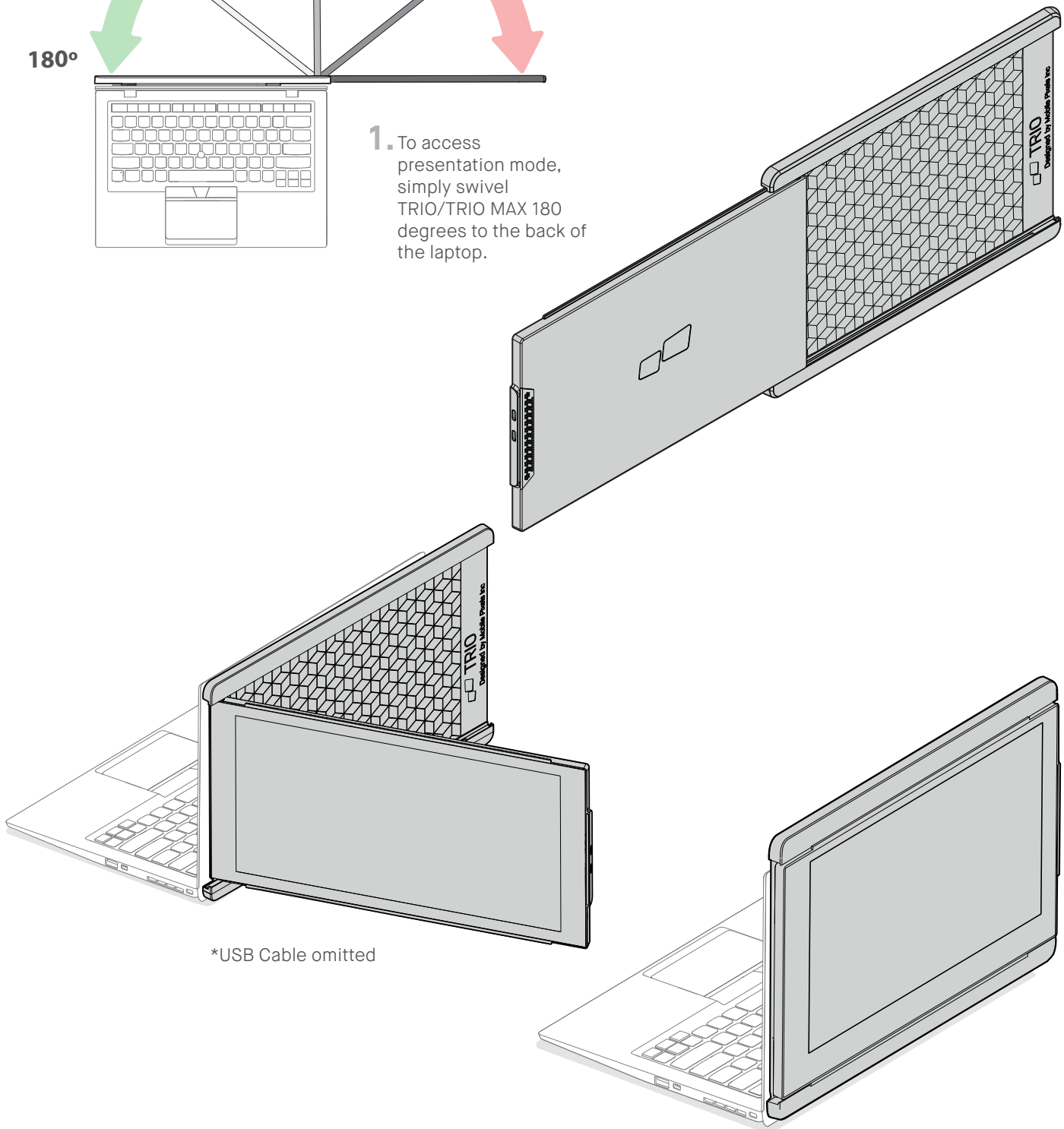
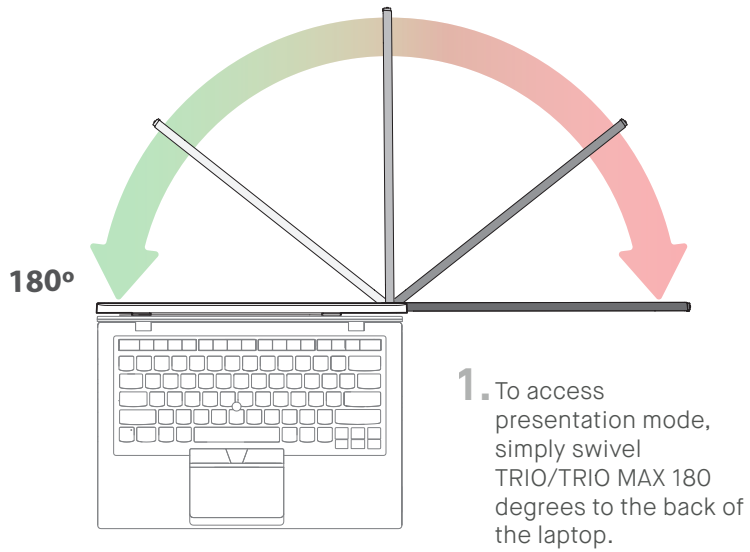


3. Connect Trio to the Pc and use it in portrait mode

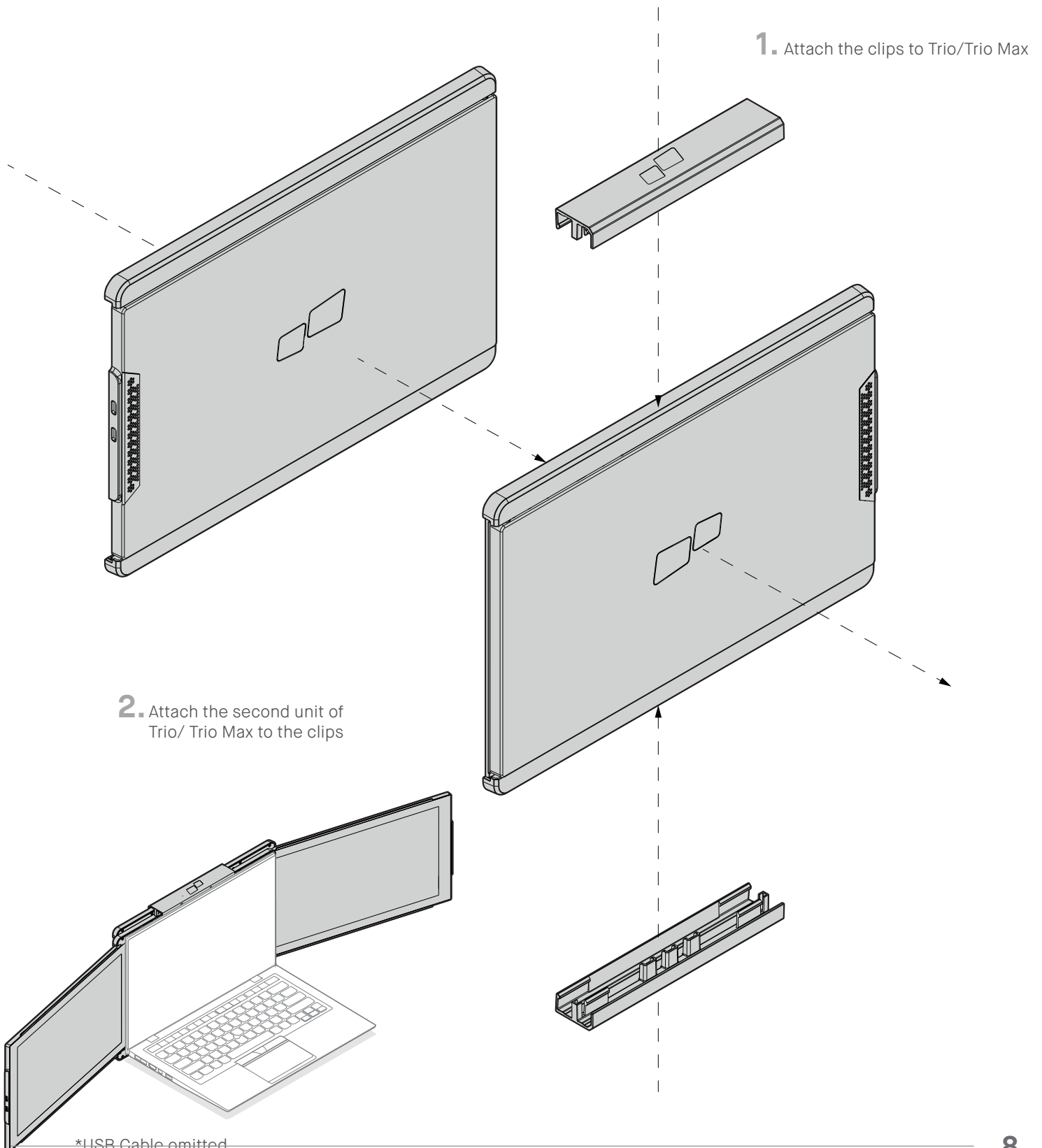
4. Go to Display settings to rotate display
See section 4.2

*USB Cable omitted

3.4 PRESENTATION MODE



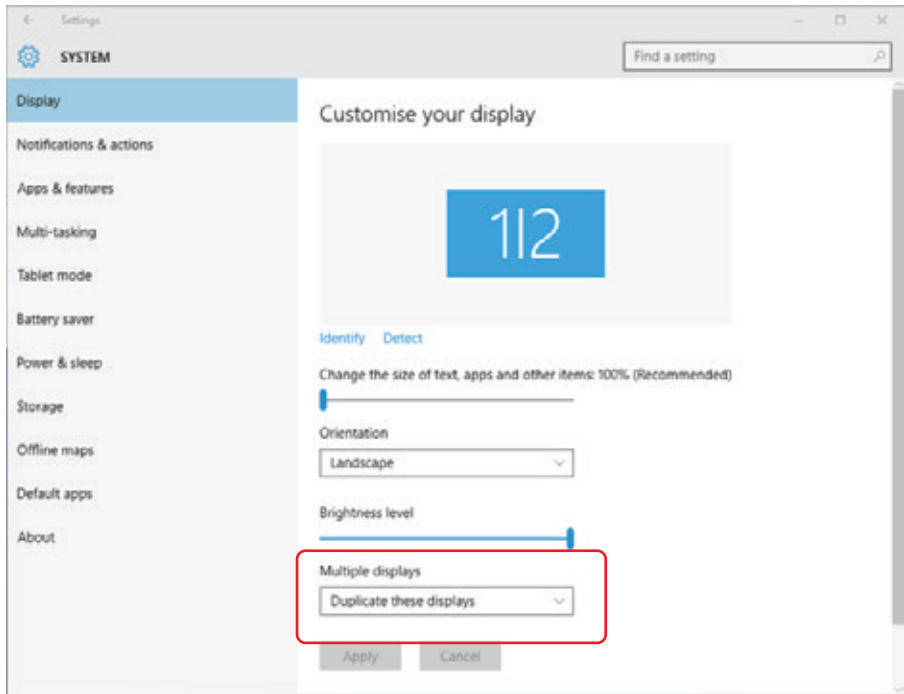
3.5 THREE-SCREEN MODE



SECTION 4: DISPLAY SETTINGS

4.1 DUPLICATE MODE TO EXTEND MODE

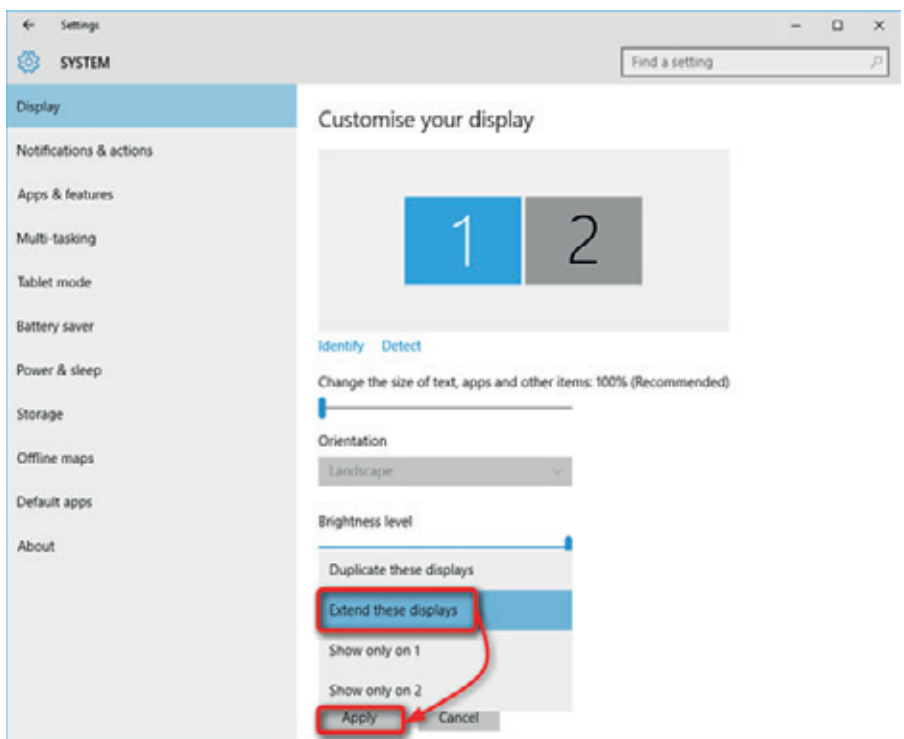
4.1.1 WINDOWS SETTINGS



-Right click on your desktop while TRIO/TRIO MAX Is connected and choose "Display Setting"

-Then you should either see this screen or the one at next Section

-If you have a duplicate screen and want to change it to extend mode, click on the "Duplicate these displays" from the drop down box



-When the drop down box is opened, choose "Extend these displays"

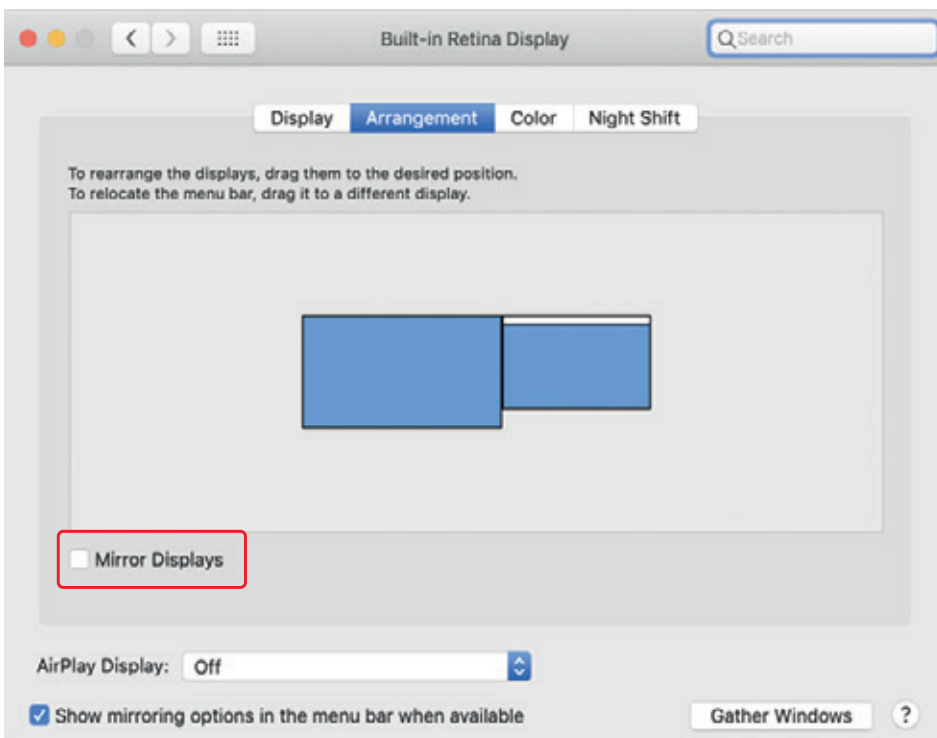
-Then click "Apply"

-Now you are in Extend Mode

4.1.2 MAC OS SETTINGS



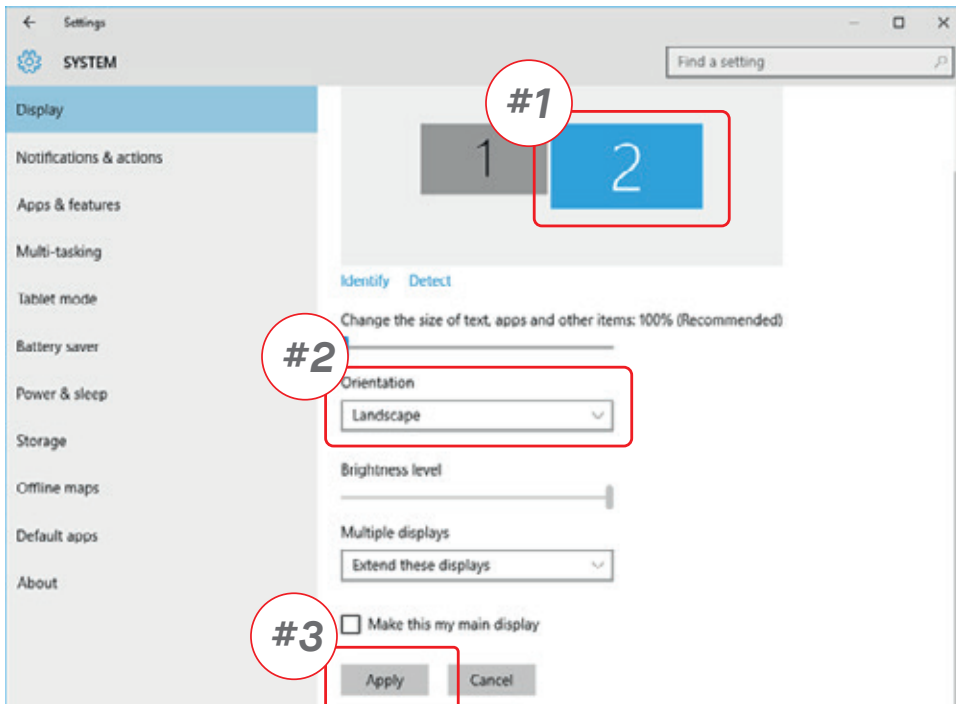
- Click on system preference and go to Displays



- Checking the "Mirror Displays" box will switch between duplicate and extend mode for Duex Pro.

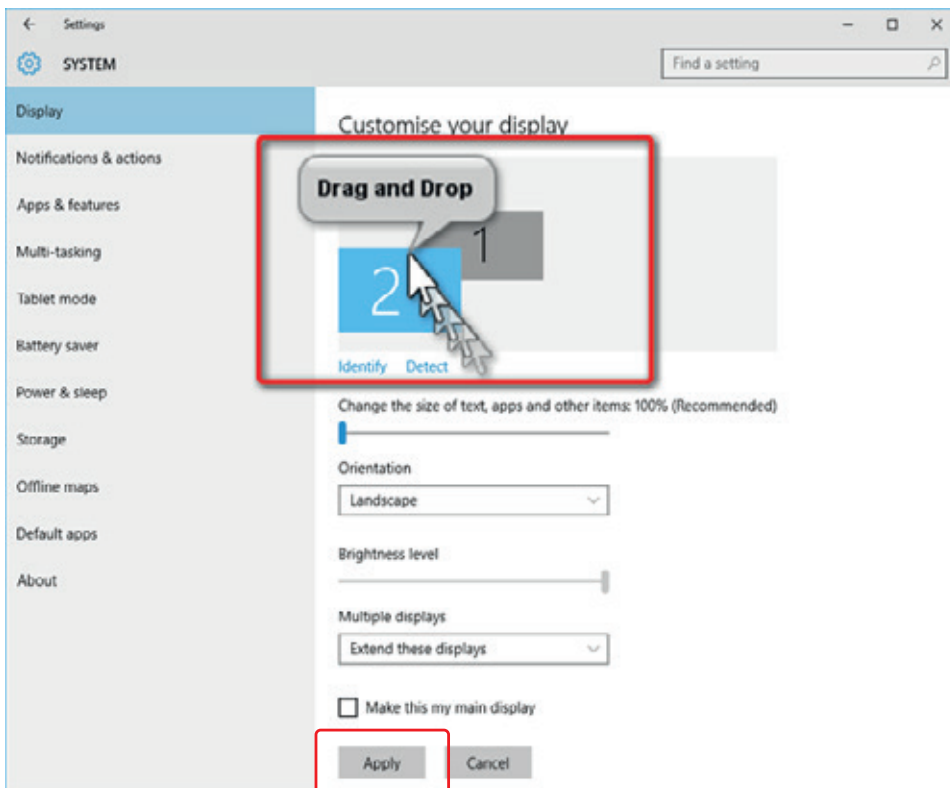
4.2 ROTATE DISPLAY AND LAYOUT SET UP

4.2.1 WINDOWS SETTINGS



If you are already in "Extend mode" and want to use TRIO/TRIO MAX on the left

1. First click on the 2nd screen icon
2. Then open the Orientation drop down box and change it from "Landscape" to "Landscape (flipped)"; Choose "Portrait" for Portrait Mode".
3. Then click "Apply"

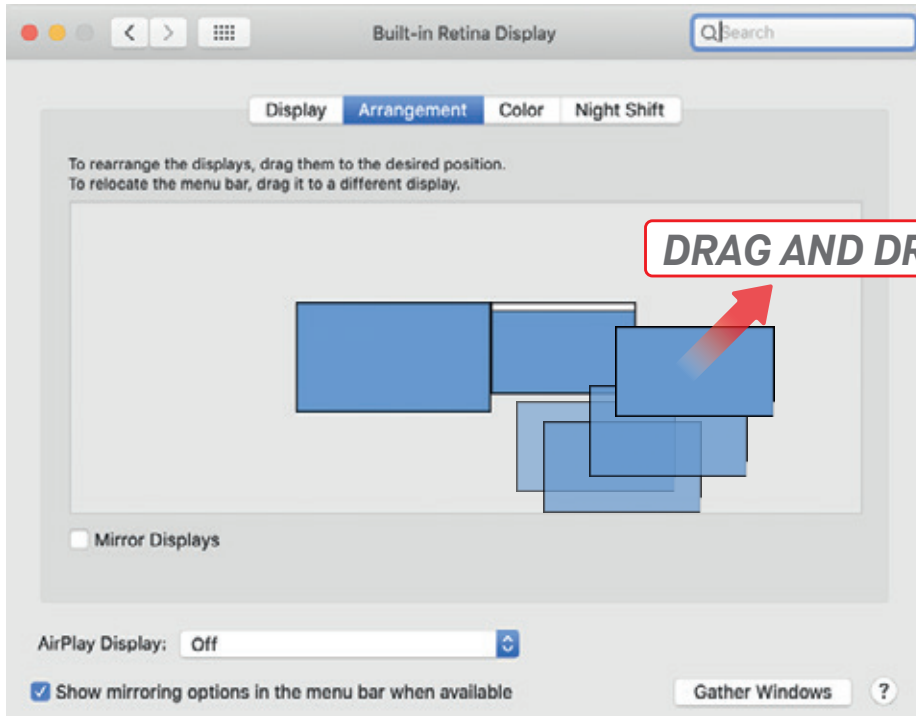


-Now your screen is upside down and ready to be use on the left with 1 extra step.

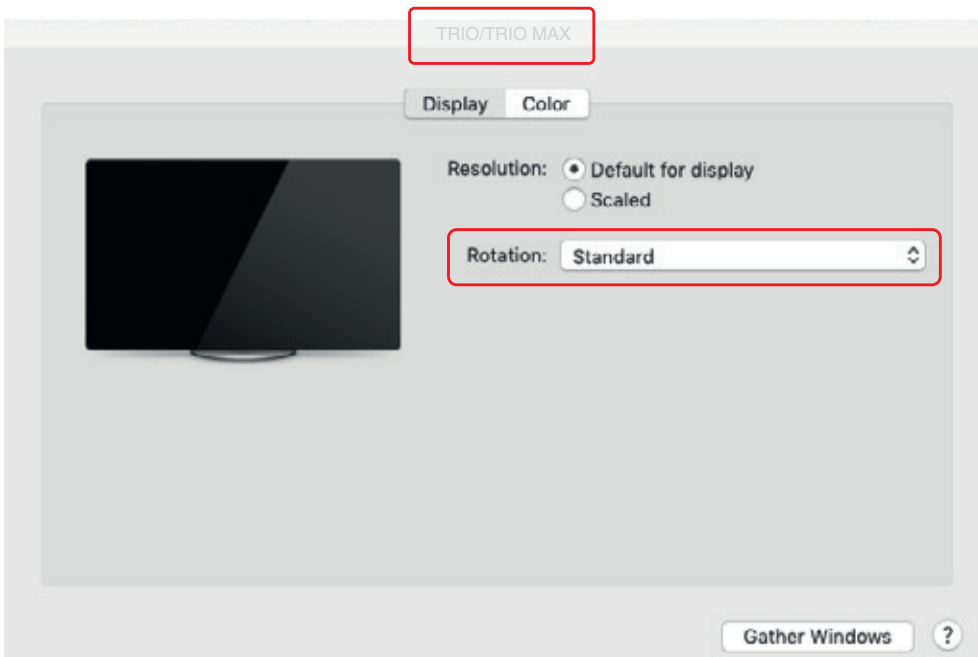
-Move the 2nd display icon from the right to the left of the 1st display by simply "Drag and Drop" it.

-Click "Apply" to finish the setting of the lay out.

4.2.2 MAC OS SETTINGS



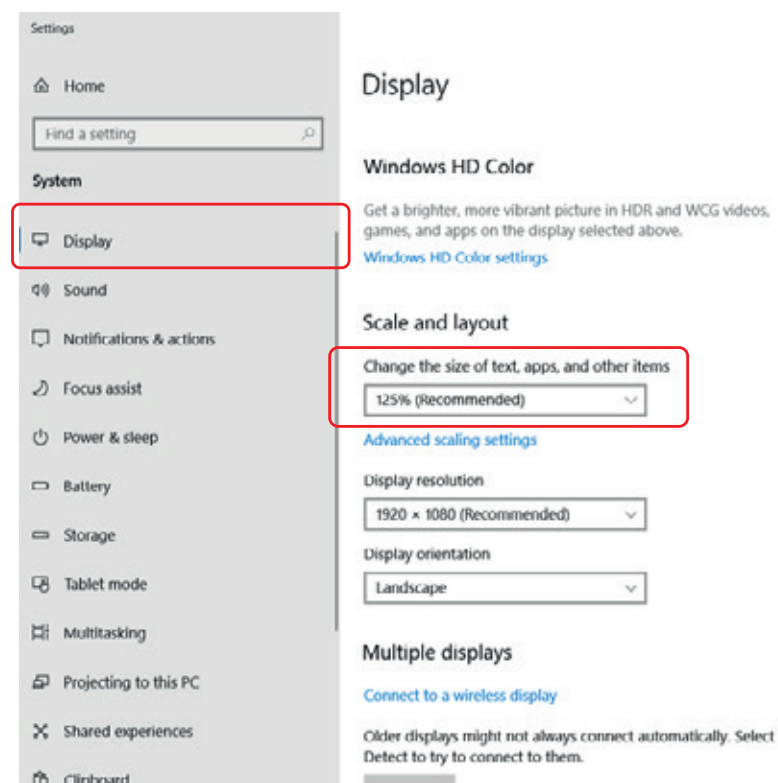
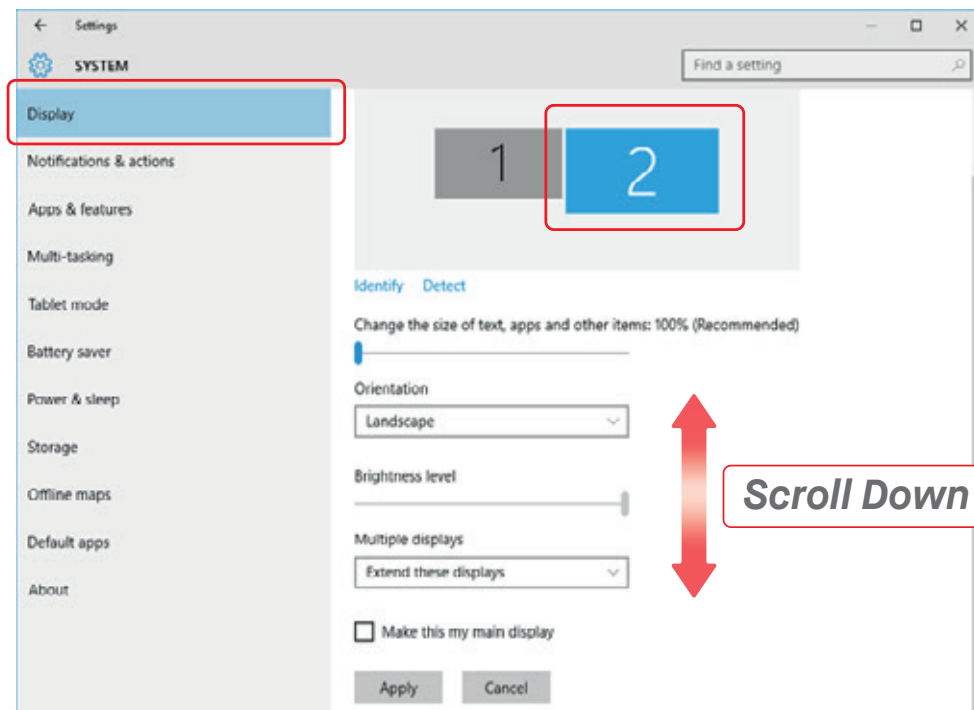
- To position the display on either left or right, simply drag and drop it to the side you want.



- To rotate the display, go to the "Trio/Trio Max" display window and choose the suitable "Rotation" options.

4.3 CHANGE DISPLAY SETTINGS TO ADJUST CONTENT SIZE

4.3.1 WINDOWS

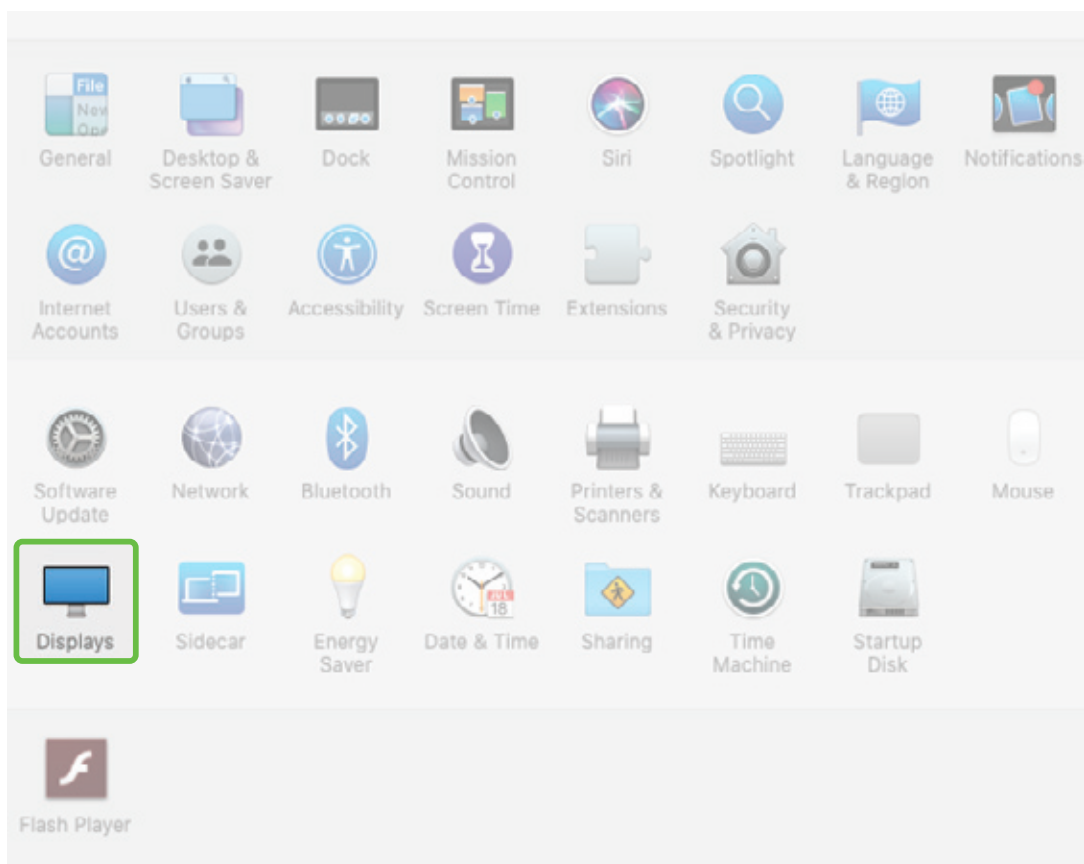


4.3.2 MAC OS

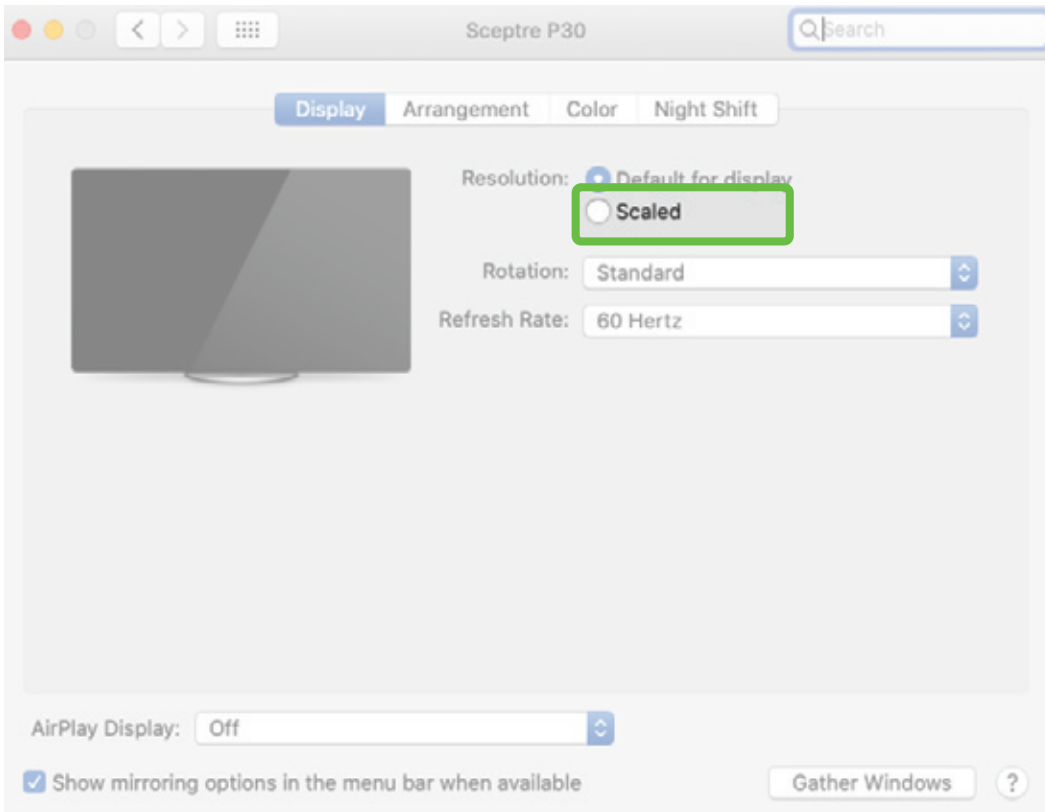
(When USB-C DP/HDMI Alternate Mode is used)



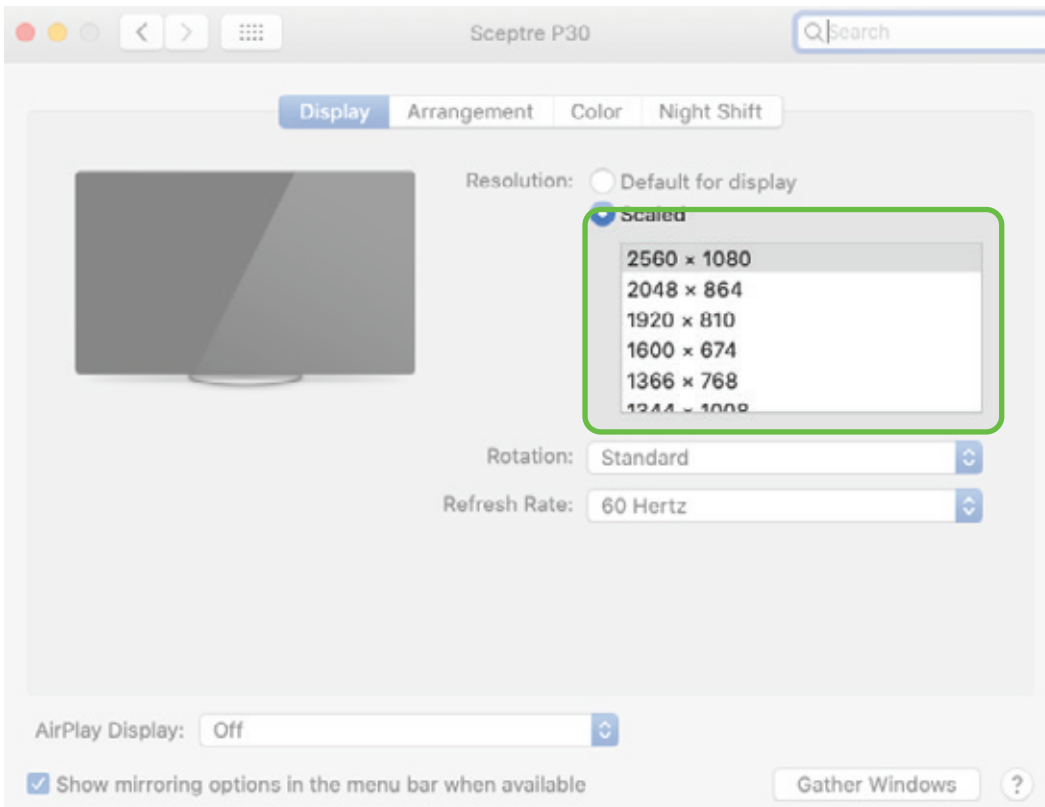
1. Click System Preferences



2. Click Displays



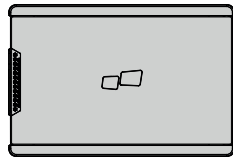
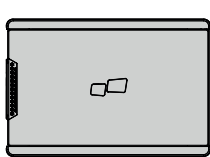
3. Hold down "Option" key and click "Scaled"



4. Select the resolution that fits your need

SECTION 5: TECHNICAL INFORMATION

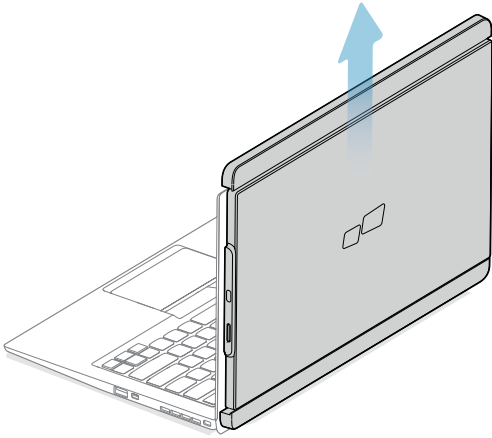
5.1 SPECIFICATIONS



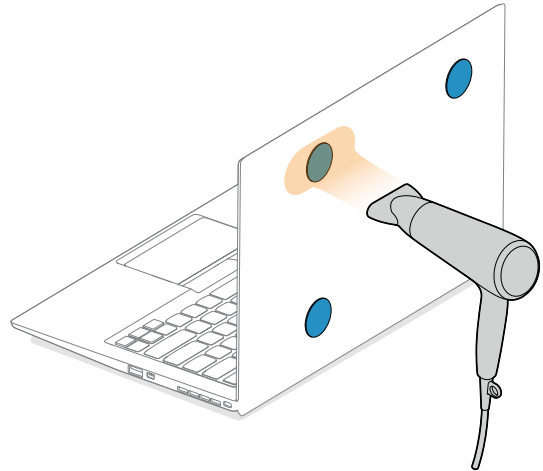
Model	Trio	Trio Max
Screen Size	12.5 In	14 In
Weight	1.6 Lb	2.0 Lb
Resolution	1080p FHD	1080p FHD
Refresh Rate	60Hz	60Hz
Brightness	300N	300N
Power Consumption	<4.5W	<4.5W
Dimension	12.8"x8.6"x0.5"	14.1"x9.5"x0.5"
Compatible OS	Android, Chrome, Linux, Mac, Windows	
Video Signal	USB-C DP/HDMI Alternate Mode; Displaylink	

*Specifications are subject to change without notice.

5.2 REMOVING METAL PLATES

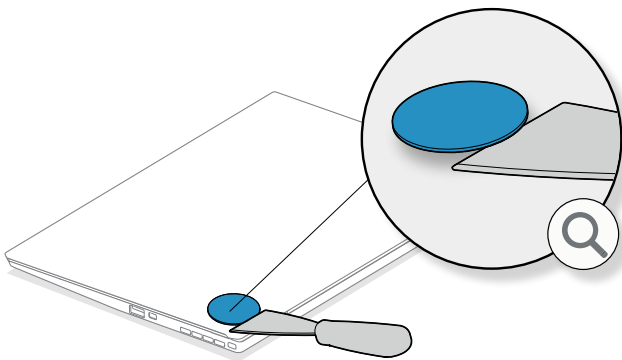


1. Take TRIO/ TRIO MAX off from the back of the laptop.

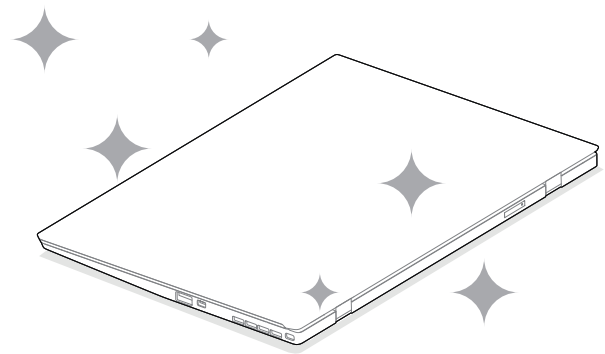


2. Get a hair dryer and set it to medium heat level (do not use high heat setting as it may over heat your own laptop).

Gently apply the warm air across the metal plates to soften the adhesive material (don't continuously focus on a single area).



3. Once the adhesive is warmed up, it is ready to be removed. A plastic scraper (not included) is recommended to remove the adhesive.



4. Now the surface is fresh and ready for a new set of plates.

PART I

SAFETY AND HANDLING

IMPORTANT SAFETY INFORMATION:

Carefully go through the user manual and other documentation before setting up the TRIO/ TRIO MAX.

If any part is broken or damaged, do not try to open TRIO/ TRIO MAX or attempt to fix it yourself, please contact the retailer, a qualified service technician or email us directly at contact@mobilepixels.us.

Store TRIO/ TRIO MAX under appropriate conditions, avoid exposure to extreme heat, moisture and dust.

We recommend you to place TRIO/ TRIO MAX on a stable surface and keep your TRIO/ TRIO MAX in a sleeve to protect it during transport.

Never spill liquid of any kind onto the surface or into the openings of the TRIO/ TRIO MAX. Do not spray any cleaner on the screen to avoid an electric shock. If your TRIO/ TRIO MAX gets wet, unplug all cables and reconnect till the TRIO/ TRIO MAX is completely dry.

Carefully unplug all cables before cleaning TRIO/ TRIO MAX. Clean with a soft, dry, lint-free cloth.

To ensure satisfactory experience, use the TRIO/ TRIO MAX with recommended display size of your laptop.

Please disconnect the cables when you reverse the position of TRIO/ TRIO MAX, decouple the TRIO/ TRIO MAX from the backplane of your laptop, rotate 180°. About a vector normal to the backplane, and re-couple to the backplane of the laptop computer.

CHOKING HAZARD:

TRIO/ TRIO MAX and accessories contain small parts that may present a choking hazard to small children, please keep them out of reach from small children.

MEDICAL DEVICE INTERFERENCE:

The TRIO/ TRIO MAX contains magnets. The TRIO/ TRIO MAX also contain components and radios that emit electromagnetic fields. It may interfere with personal medical devices, e.g. pacemakers or defibrillators. Keep a safe distance between the TRIO/ TRIO MAX and your medical device. Consult a physician or medical device manufacturer for specific details of your medical device. Stop using TRIO/ TRIO MAX if the interference is observed with your personal medical devices.

Items with magnetically-stored data such as credit cards and hard drives may

be sensitive to magnetic or electromagnetic fields, hence should be kept at a distance from TRIO/ TRIO MAX.

SUPPORT:

For detailed troubleshooting information, contact:

CONTACT@MOBILEPIXELS.US

PART II

FCC COMPLIANCE STATEMENT

This device complies with Part 15 of the FCC Rules. Operation is subject to the following two conditions:

- This device may not cause harmful interference.
- This device must accept any interference received including interference that may cause undesired operation.

Note: This equipment has been tested and found to comply with the limits for a Class B digital device, pursuant to Part 15 of the FCC Rules. These limits are designed to provide reasonable protection against harmful interference in a residential installation.

This equipment generates, uses, and can radiate radio frequency energy, and if not installed and used in accordance with the instructions, may cause harmful interference to radio communications. However, there is no guarantee that interference will not occur in a particular installation. If this equipment does

cause harmful interference to radio or television reception, which can be determined by turning the equipment off and on, the user is encouraged to try to correct the interference by one or more of the following measures:

- Reorient or relocate the receiving antenna.
- Increase the separation between the equipment and receiver.
- Connect the equipment into an outlet on a circuit different from that to which the receiver is connected.
- Consult the dealer or an experienced radio/TV technician for help.

PART III

WARRANTY

Mobile Pixels INC warrants this product for a period of 1 year upon the original date of purchase. Product or service warranty will not be extended to any losses or damages that are due to improper installation, misuse, neglect, modification, alteration by non-authorized third party, improper environment, or other irregularities.