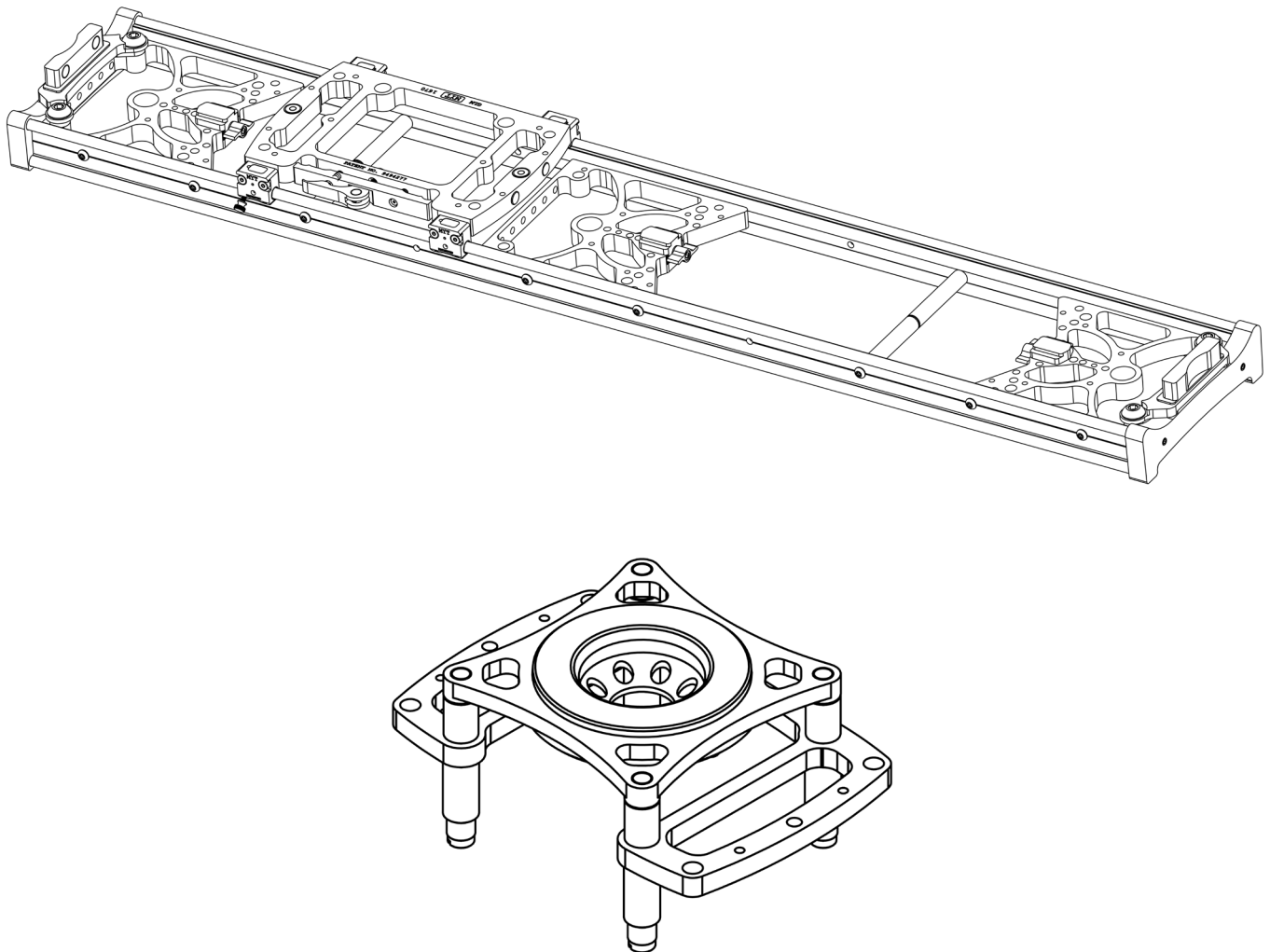




# INSTRUCTION MANUAL

## CAMERA SLIDER DOLLY AND HI-HAT



# TIPS AND REMINDERS

## AT A GLANCE

- Mounting on a tripod and stand is recommended.
- Center support is not necessary.
- Clean frequently for best performance (no disassembly required!).
- The Hi-Hat detaches from the slider for multiple configurations.
- Reconsider current habits - try operating with a light grip.
- Unmount the Hi-Hat and use protective sleeves for transport.

## COMMON SET-UP OPTIONS

We highly recommend mounting your camera on a tripod and stand. This combination will allow you to precisely level your system with the tripod while simply supporting the other end with a light weight stand. This provides a much easier and faster setup than using two tripods. Alternatively, you can also use two stands. We strongly suggest at least one be of a heavy-duty nature.

MYT Works offers adapters for 75, 100, 150mm doughnuts, and Mitchell tripods. The Junior/Baby Stand Adapter creates a rigid support on both 5/8" light and junior stands. The Rosette Leg/Rod Adapter Kit allows you to mount on four independently angled legs/rods which create a wider base and increase stability. Your camera can also be used directly on the ground or on a table with or without baby feet. Baby feet can be used anywhere there is a 1/2"-13 thread.

MYT Works Camera Sliders offer the most versatile mounting options to the user. Any of the above mounting options can be combined to achieve the perfect setup for any situation.


## NO CENTER SUPPORT REQUIRED

With our dual-extrusion rail system, there is no need for center support. Even under heavy loads, rail deflection in the center of the Camera Slider will be insignificant and motion quality will not be impacted.

## EASY CLEANING

Regular maintenance and cleaning will ensure a long life and continued smooth operation. The wheel housings were designed with easy wheel cleaning in mind. In fact, it's not even necessary to take the carriage off the rails.

First, remove the silicon cap on top of each bearing. Wet a cotton tip with denatured alcohol or warm water and apply it against the wheel. Roll the carriage back and forth until the wheel surface is clean. You may need to apply slight downward pressure on the carriage to fully engage the wheel against the rail.



Clean rails with a damp cloth with denatured alcohol or warm water. Do not use grease or any petroleum products.

End caps are made of wood for ease of handling in extreme temperatures which will develop a patina over time. They do not need to be cleaned or brushed with any petroleum products.

## **QUICK RELEASE LATCH**

The Hi-Hat is secured to the carriage with our adjustable quick release latch system. This allows for easy removal of your fluid head without needing to unmount the camera.

## **PLACING THE HI-HAT WITH CAMERA ON THE CARRIAGE**

There are 4 legs/rods to support the Hi-Hat. To attach the Hi-Hat begin by facing the latch side of the carriage. Slightly tip the Hi-Hat away from you, aligning the two far rods directly above their holes on the carriage. In one smooth motion, bring the Hi-Hat down so the two front rods slide into their holes and ensure the Hi-Hat is level.

## **HI-HAT ALTERNATE LOCKING OPTION**

In order to achieve an easy release, the Hi-Hat was designed with a minor clearance. For a more secure Hi-Hat, we include the Tool-less Locking Bolts with every Camera Slider.

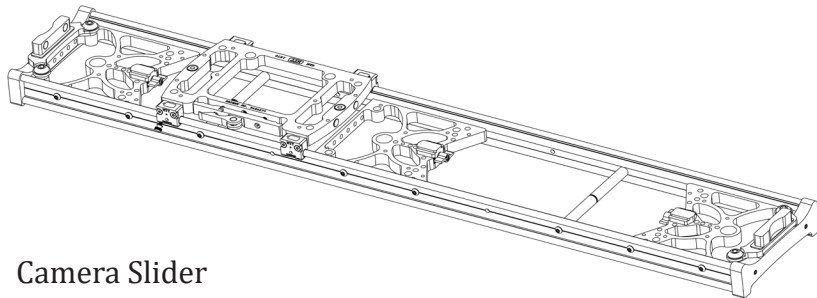
## **CARRIAGE HANDLING**

There is no need to use a forceful or tight grip on the carriage when operating the Camera Slider as our system is designed to start and stop on a dime. No longer do you need to worry about controlling the backlash or overshooting your mark. Our unique sleeve and wheel technology is what gives our Camera Slider the quality of motion they are known for, giving you a clean shot every time.

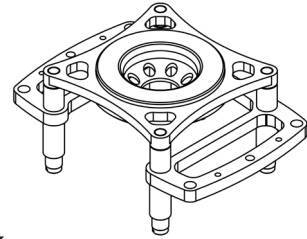
## **PROTECT YOUR TOOLS FOR TRANSPORT**

When you're done shooting, always unmount your Hi-Hat for transport and secure it between the rails in the canvas tote. You do not want to exert undue pressure on the carriage in the event of a hard fall. Also, slide the protective sleeve back onto the rails after your shoot.

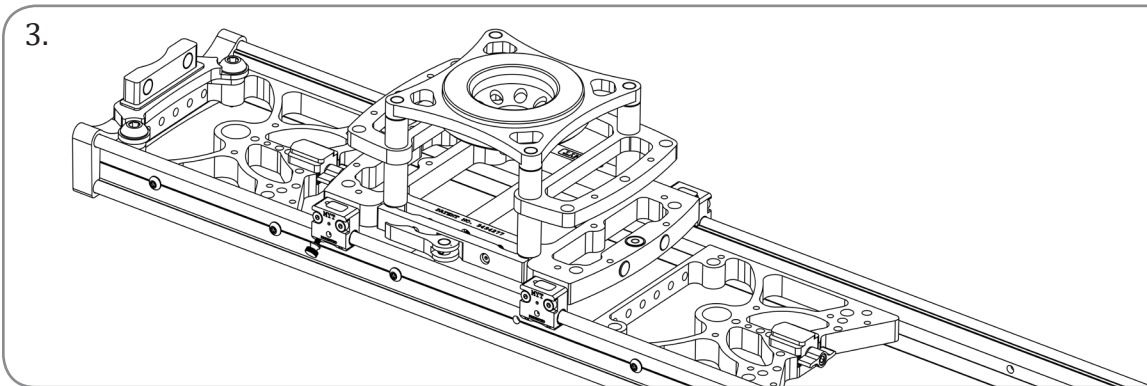
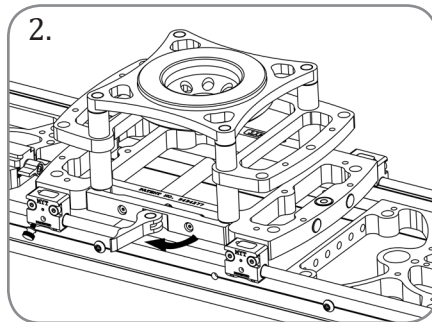
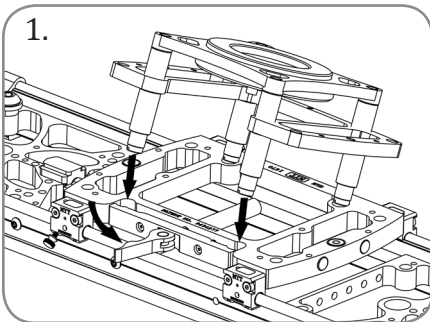
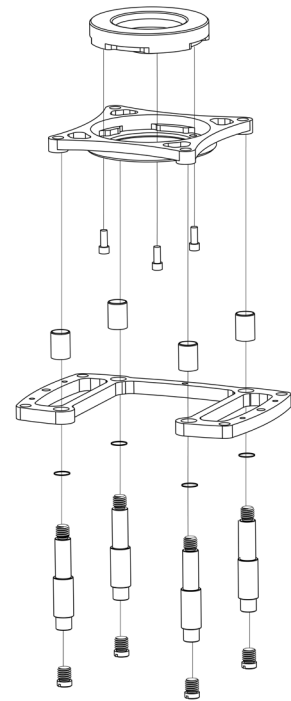
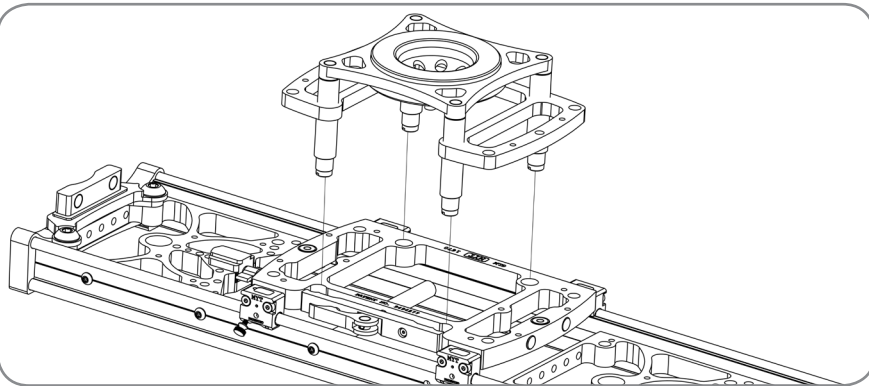
# OVERVIEW



Camera Slider

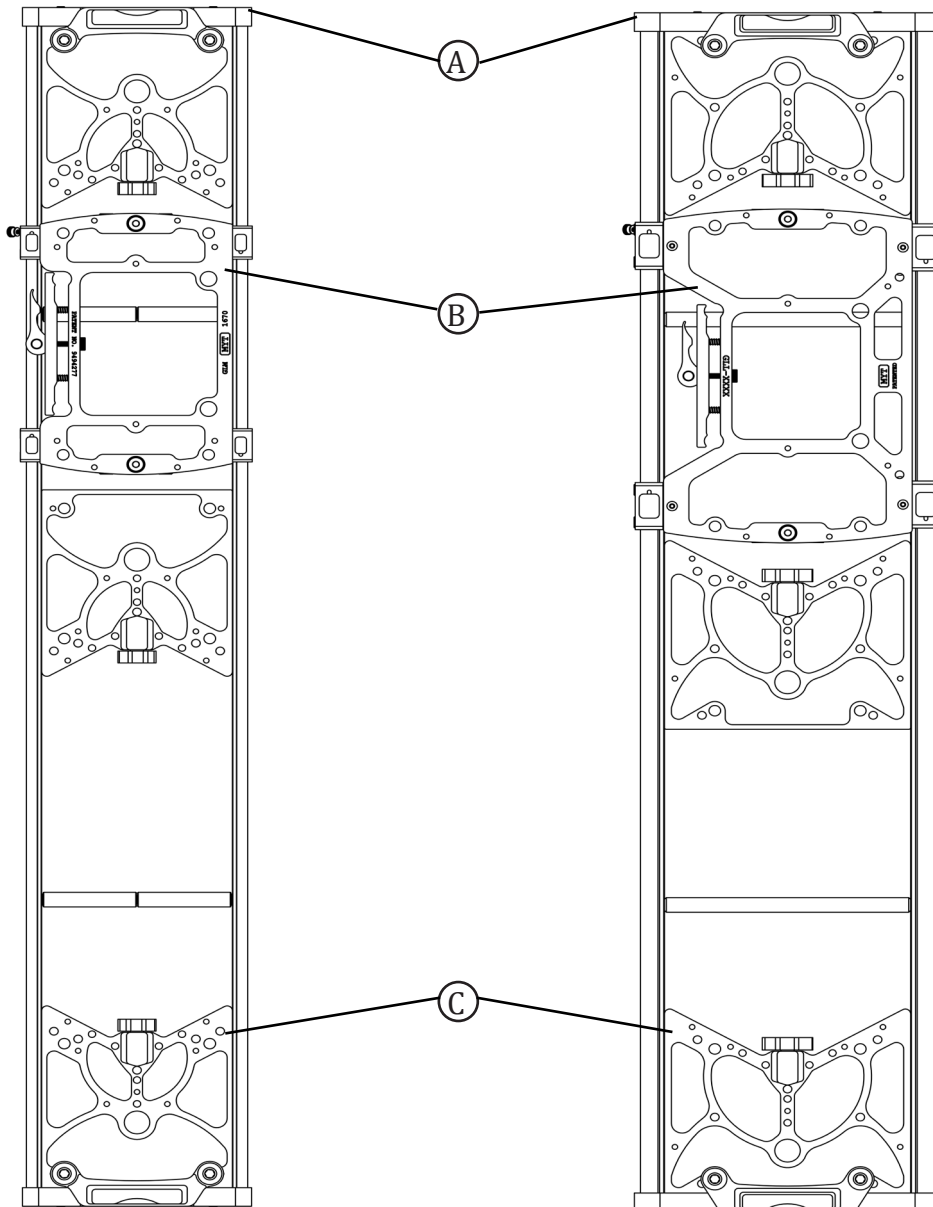


Hi-Hat



Medium • 4 ft.

Large • 4 ft.



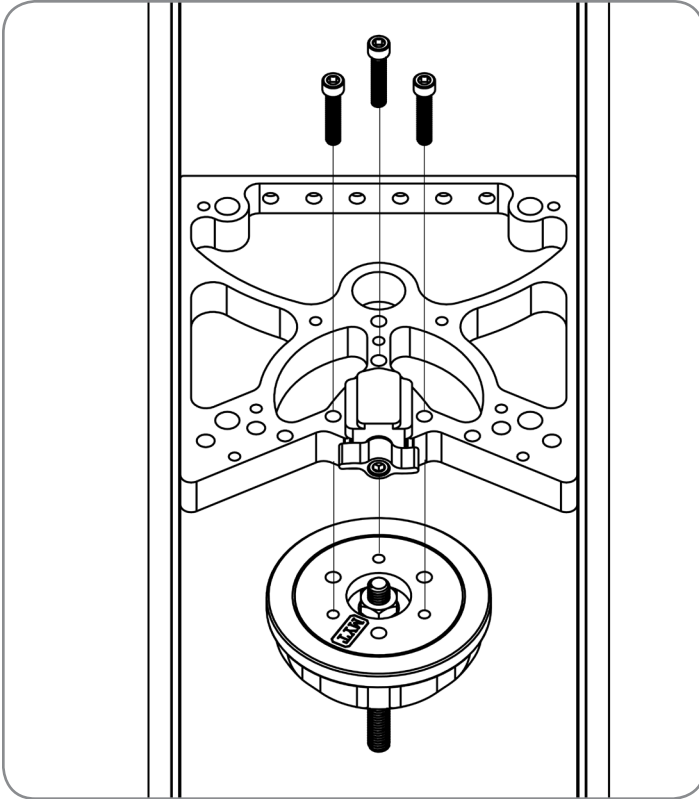
Ⓐ End Cap

Ⓑ Carriage

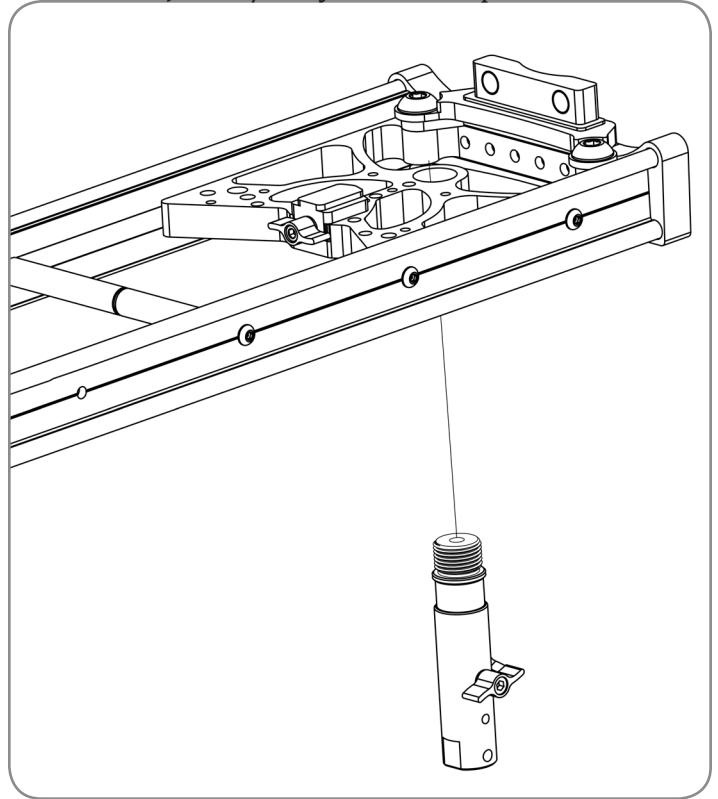
Ⓒ Static Plate

# MOUNTING OPTIONS

100mm Half-Ball Adapter Mount (1/4"-20x1.25" Screws)



Junior/Baby Stand Adapter



Rosette Leg Adapter

