

PR[→]AIM Flying Bowl Camera Slider (100mm Bowl) (P-FK-BL)

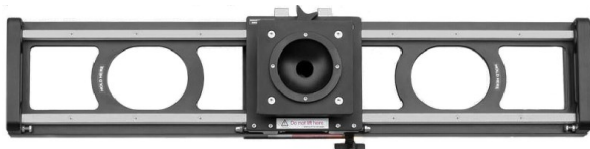
Assembly Manual



Available sizes: 2ft, 3ft and 4ft

What's In The Box

Please inspect the contents of your shipped package to ensure you have received everything that is listed below.



Flying Precision Camera Slider



75mm
Conversion Ring

3/8" Threads



Female Adapter



Male Adapter



2 x Crossbars

4 x Feet



Bag packing

All rights reserved.

No part of this document may be reproduced, stored in a retrieval system, or transmitted by any form or by any means, electronic, mechanical, photo-copying, recording, or otherwise, except as may be expressly permitted by the applicable copyright statutes or in writing by the Publisher.



Safety Hints

ATTENTION: PLEASE READ THIS BEFORE USING TO PREVENT SERIOUS DAMAGE TO THE TRACK!

NEVER USE THE TRACK IN SAND, DIRT, CAUSTIC, OR SALT WATER ENVIRONMENTS!

This will cause irreparable damage to the bearings and rails, requiring complete replacement!

DO NOT OVERTIGHTEN CARRIAGE BRAKE!

Needlessly over tightening the carriage brake can cause misalignment and severely damage the roller bearings!

ONLY USE YOUR HAND TO LOCK OR RELEASE THE CARDELLINI HEAD LOCK!

Serious damage will result if it is wrenched on, or hammered off.
Hand tighten only!

NEVER STRIKE OR PUT METAL OBJECTS ON THE RAILS!

This can cause nicks and dings which will result in unsteady movement and image vibration!

ALWAYS USE EXTREME CAUTION WHEN USING THE TRACK ON A TRIPOD!

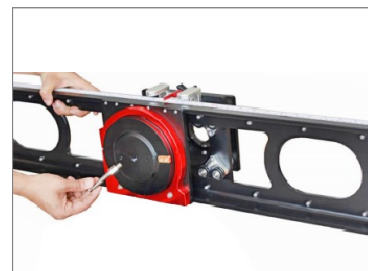
Load shift occurs when the camera moves along the track. This can cause the camera and slider to tumble over resulting in catastrophic damage! Always use sandbags on the legs and support on the ends to prevent this!

FOLLOWING THESE GUIDELINES WILL PROVIDE BETTER IMAGES AND TROUBLE FREE OPERATION.

SHOULD YOU NEED ADDITIONAL INFORMATION, TECHNICAL ASSISTANCE IS AVAILABLE 'ONLINE' BY CONTACTING YOUR SALES REPRESENTATIVE.

■ Flying Bowl Camera Slider Setup

- Remove bolt from Hub Locking Knob.
- Then insert into the bottom of slider by twisting it.



- Mount the Slider on 100mm Tripod Stand (Not Included) and tighten Hub Locking Knob to secure it on stand.



- The slider is properly mounted on tripod stand.



- Loosen the knob to move top platform and tighten it to lock the top platform when you need static shots or while transportation.



- For 360° Rotation of Slider, loosen the black knob as shown in image



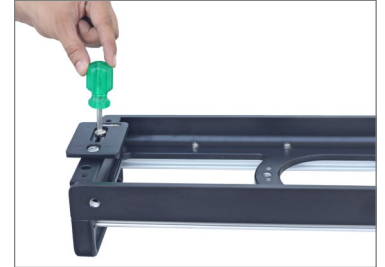
- Now affix your Bowl Mount Fluid Head (Not Included) on Slider for mounting camera setup, and secure it properly.



Mounting Flying Slider on Two Tripod Stands

NOTE: Mount the Slider on any stand with 3/8"-16 thread.

- Attach Quick Release Plate of Tripod Head with 3/8"-16 thread, onto the end foots of Slider.



- Now mount the Slider on Tripod Head and lock it properly to ensure a secure connection.



End Feet Mounting

- Attach each of the two Cross Bars on each side of Slider and tighten them accurately with Allen key.



- Insert the four End Feet on all the corners of Crossbars and tighten knob to secure them.



- Loosen red knob at End Feet to adjust the height, according to your setup requirement.



Flying Slider Mounting on C Stands

- Remove both bolts from slider with the help of 3/16" Allen Key (**Not Included**).



- Now, attach the crossbar to the end of the slider.



- Then insert the bolt and tighten it with the help of 3/16" Allen key.



- The cross bar is properly mounted.
- Repeat same process to attach crossbar on another side.



- Now mount the Slider on 100mm Tripod Stand (**Not Included**) and tighten Hub Locking Knob to secure it on stand.



- The slider is properly mounted on tripod stand.



- Next, insert the C-stands (Not Included) into the crossbars attached to both ends of the slider.



- Now slider is properly mounted on C stands.



YOUR PROAIM FLYCAM BOWL CAMERA SLIDER ALL DRESSED UP AND READY TO GO!



(SHOWN WITH OPTIONAL ACCESSORIES)

Warranty: We offer one year warranty for our products from date of purchase. Within this period of time, we will repair it without charge for labor or parts. Warranty doesn't cover transportation costs nor does it cover a product subjected to misuse or accidental damage. Warranty repairs are subjected to inspection and evaluation by us.

Liability: We are not liable for damage caused by products that we do not supply or from mishandling in transit, accident, misuse, neglect, lack of care of the product, or service by anyone other than our company.

Contact Us: In case of any kind of dissatisfaction, please Contact us immediately and we promise our utmost support and care until you use our product.