

# **Robo JR**

## User Manual



**Prompter** People™

# Robo Junior

## In the Box

Regular Auto-Reversing Monitor



or

Highbright Auto-Reversing Monitor



Tripod Adapter Plate



Monitor VESA Plate

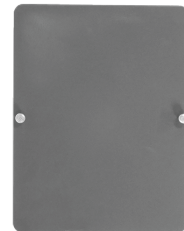
Robo Junior Body



Top Plate



Back Plate



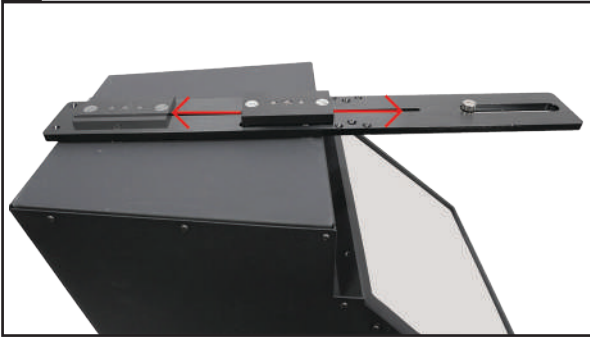
Camera Mount Screw & Adapter



# Robo Junior

## Quick Setup Guide

1



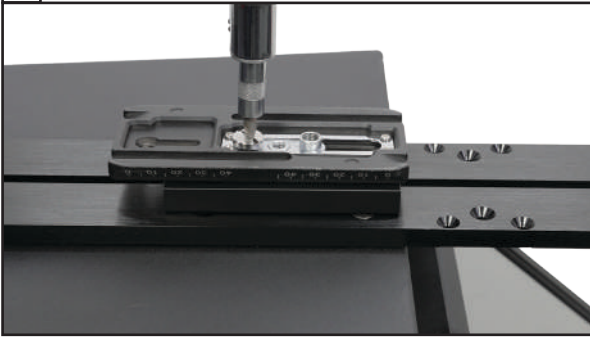
Tripod Adapter Plate comes assembled, but the screws can be loosened with a flat head screwdriver or quarter and the plate can move across the base of the Robo Jr Sled.

2



When the Tripod Adapter Plate is positioned for optimal balance, securely tighten the screws with a flat head screwdriver or quarter.

3



Screw your Tripod Plate on to the Robo Jr. Tripod Adapter plate.

4



Attach the Robo Jr to your Tripod.

# Robo Junior

## Quick Setup Guide

5



Robo Jr Monitor Vesa Mount comes Assembled, but adjustments for positioning can be made.

6



Position the Monitor to reflect correctly, so the entire screen of the monitor is reflected in the glass.

Use the thumbscrew to secure the Monitor into place.

7



Ensure the screw is fully and securely tightened

8



Robo Jr Properly Assembled without the Robotic / PTZ Camera.



# Robo Junior

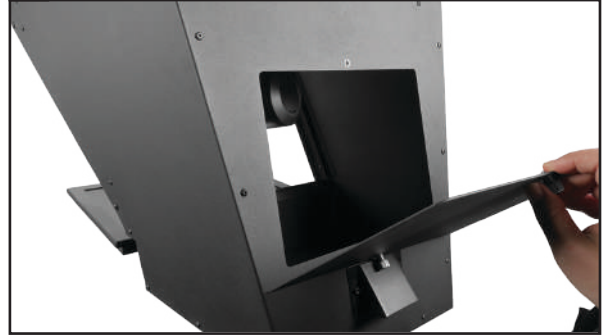
## Quick Setup Guide

9



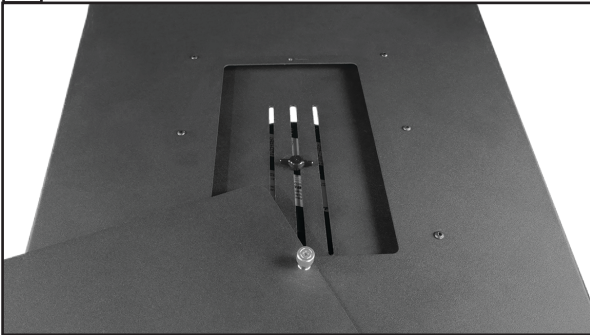
Backplate has two thumb screws. Fully Unscrew both thumbscrews from back or Robo Jr. (Leave them set on the backplate)

10



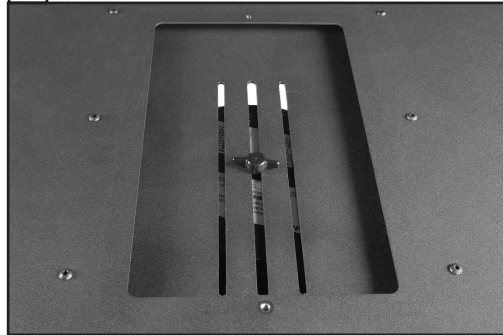
Remove the backplate from the Robo Jr.

11



Top Plate has two thumb screws. Fully Unscrew both thumbscrews from the Top plate (Like you did with the Blackplate) Remove the Top Plate from the top of the Robo Jr.

12



Use the Thumbscrew to attach your Robotic or PTZ Camera Unit

Robo Jr. Max Skip to page 6 - Step 16

# Robo Junior

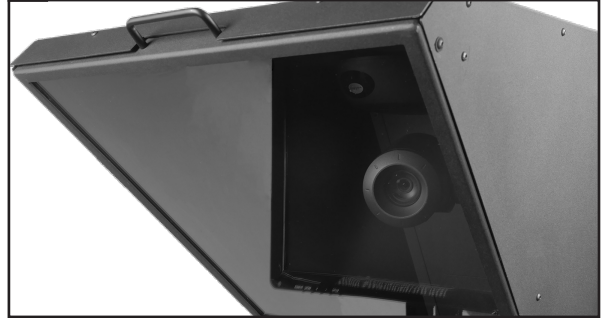
## Quick Setup Guide

13



Ensure your Camera is securely and correctly mounted to the Robo Jr Top before allowing it to freely hang.

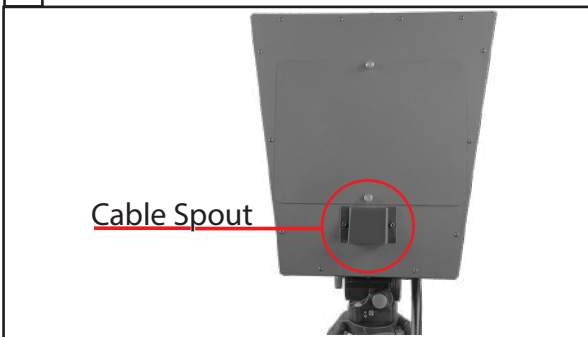
14



Ensure the PTZ / Robotic Camera is properly centered in your trapezoidal glass, so your talent is reading from the center of the screen and lens.

The camera lens should be close to our glass but still have room to move 30° left and right without touching the glass.

15



Run your PTZ Control cables and power cables out of the back spout.

Re-Place the Top and Back Panels securely with the Thumbscrews.



Robo Jr Properly Assembled without the Robotic / PTZ Camera.

# Robo Junior Max

## In the Box

Regular Auto-Reversing Monitor



or

Highbright Auto-Reversing Monitor



Tripod Adapter Plate



Monitor VESA Plate

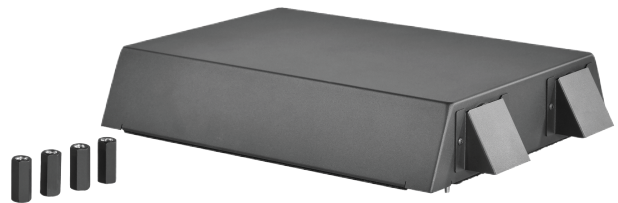
PTZ Camera Sled



Robo Junior Body



Top Hood Plate & Locking Nuts



Back Plate



Camera Mount Screw & Sled Nuts



# Robo Junior Max

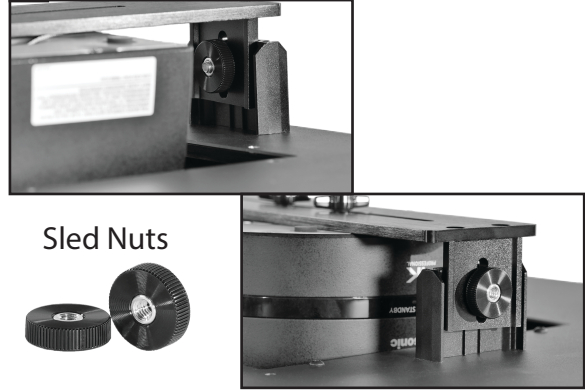
## Quick Setup Guide

16



Attach PTZ Camera to Camera Sled. Attach Camera Sled in the Middle Holes so that the camera lens is positioned centered and the inputs/outputs are accessible.

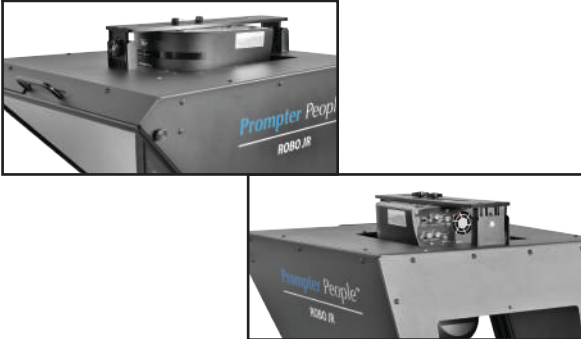
17



Sled Nuts

Lock Front and Back Sled Screws into place with the Both Sled Locking Nuts.

18

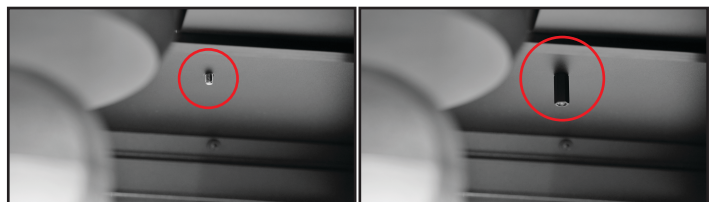


Align the Camera by loosening the Camera Mounting Screws (Not the Sled Nuts) and Slide the PTZ Camera forward so that the Lens can freely move and that the inputs/outputs are accessible.

19



Hood Nuts



Attach the Top Hood by carefully aligning it with the 4 holes that line up with the 4 x stand-off screws on the hood. Use the 4 x Hood Nuts to lock the Hood into place.

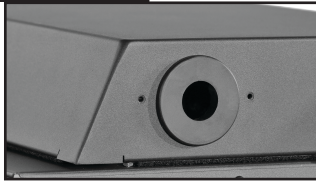
# Robo Junior Max

## Quick Setup Guide

20

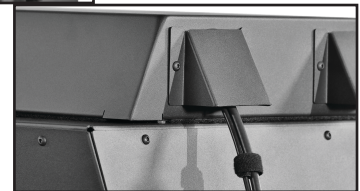


Allen Key



Remove Cable Spouts from the Top with a phillips head screwdriver. (If your model has a different screw the included Allen Key will be in the box)

21



Run your Cables out of the Spout. You can run the cables out of the 2 x top or 1 x bottom cable spouts as needed.

Replace the spout cover so that no light leak occurs when Prompting with your PTZ.

22



Skip Back to Page 3 - Step 5  
Robo Jr. Max Properly Setup.