



QUICK START GUIDE

MOVE. SHOOT. CREATE



NEO 3 & AEOS 2

Version V1.1



TIME TO CREATE

WELCOME TO YOUR NEW ROTOLIGHT



HIGH SPEED SYNC
RGBWW FLASH



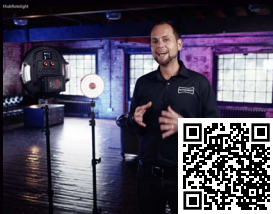
POWERFUL OUTPUT,
LIGHTWEIGHT DESIGN



16.7M COLOURS,
2500 FILTERS



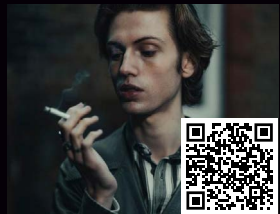
INTUITIVE
TOUCHSCREEN DISPLAY



HANDS ON REVIEW



COWBOY SHOOT



SAM NASH SHOOT

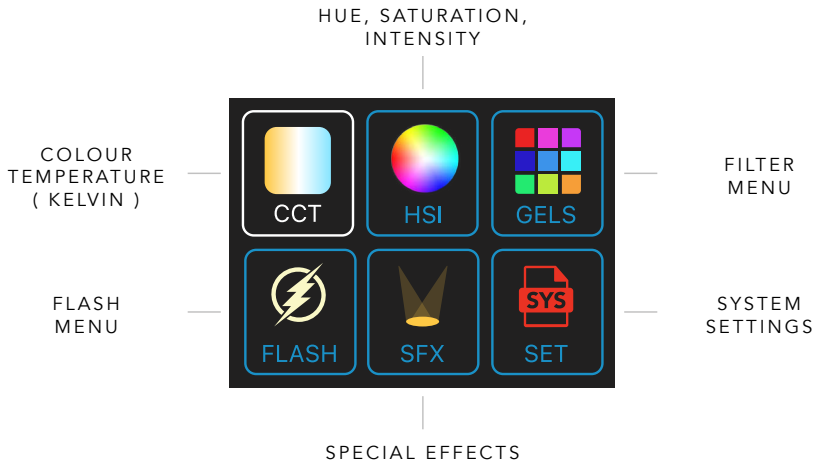


JOIN OUR
ROTOLIGHT USER GROUP



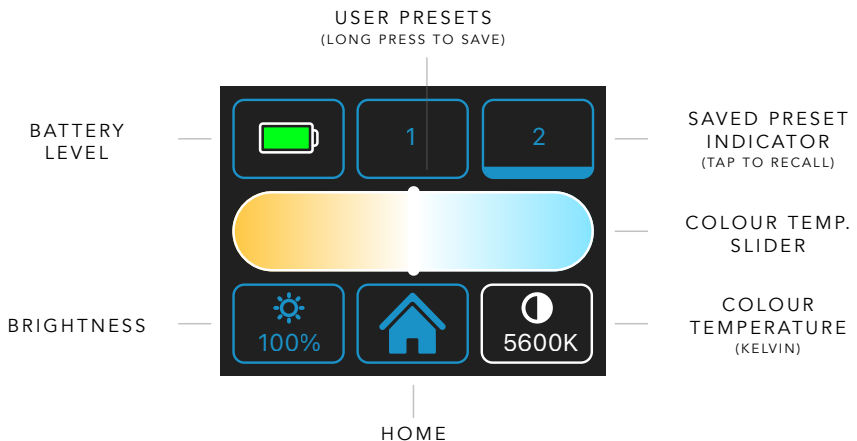
HOME MENU

From the home menu, select from 5 operating modes; CCT (Continuous light, Kelvin 3000-10,000K), HSI (Hue, Saturation, Intensity) for 16.7M RGB Colours, GELS for 2500 digital filters and sampled 'source match' effects, FLASH for RGB HSS flash (flash in any CCT, HSI or filter colour). System settings, such as language, display and factory reset, can also be adjusted by the 'SET' page. On start up, the light will automatically recall your last used settings and on each of the 5 operating mode pages. (ie CCT, HSI).



CCT MENU

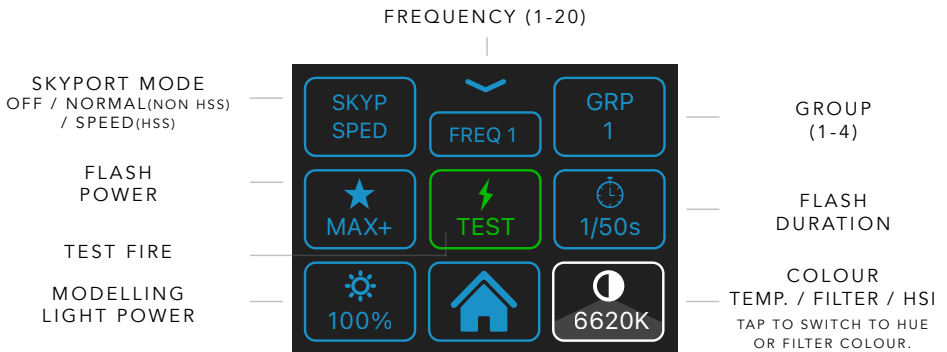
Using the touchscreen slider or right-hand knob for fine adjustments, adjust Kelvin from 3000-10,000K to your desired setting, (typically 5600K). For maximum peak output brightness, set the light to 4600 Kelvin where both warm and cool LEDs are on full power. Use the .left-hand knob to adjust brightness or tap the bottom-left brightness icon to use the on-screen slider that appears. To save your current settings, long press on one of the numbered presets, (across the top) and a prompt to save will appear. To recall, short tap on a preset, (indicated by a thick blue line at bottom of preset box). Swipe right across preset bar to reveal additional presets.



FLASH MENU

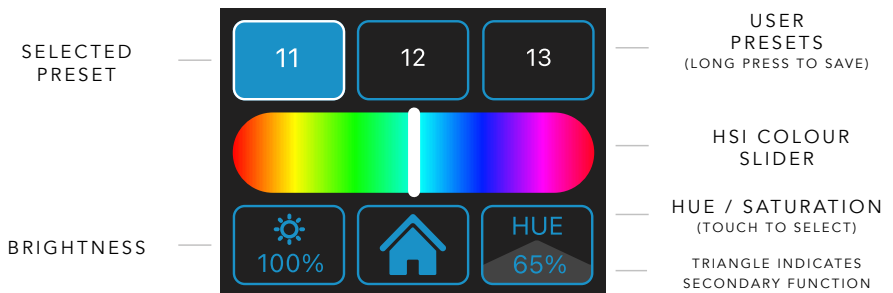
Rotolight AEOS 2 & NEO 3 are the world's first RGBWW LED lights capable of High Speed Sync flash, providing an extra stop of output when compared to their maximum continuous power*. The flash will default to the colour mode you were using prior to entering flash, (i.e. CCT, HSI or GELS). Tap the bottom-right button to switch between colour modes, (Kelvin, Gels, HSI). For best results, maximum power is available at 4600 Kelvin. Flash power should always be set to 'MAX' or 'MAX+' if available with flash duration to the longest available, i.e. 1/50th. Any faster shutter speed will be captured automatically. The lights feature an integrated Elinchrom Skyport wireless flash receiver compatible with the Rotolight HSS transmitter, or Elinchrom Skyport transmitters. Ensure Skyport mode, (top-right) is set to 'SPED' (speed) for HSS, and that the transmitter is also set to 'SPEED' mode, (Menu> ELSP mode> Speed). Third-party transmitters, i.e. Godox X1T/R, can also be used via a wired EL connection to the 3.5MM flash sync socket found on the light.

Please note: modelling light power can be adjusted or turned off with the left-hand knob. in order to preserve battery life, it is significantly less bright than the regular continuous power, whilst providing enough light to focus and to compose your shot. *in CCT mode.



HSI MENU

Access up to 16.7Million colours with the HSI menu. Using the touchscreen slider or right-hand knob for fine adjustments, adjust hue colour to your desired setting. Tap the bottom-right-hand box to adjust saturation of the selected colour. Use the left-hand knob to adjust brightness or tap the bottom-left brightness icon and use the on screen slider that appears. To save your current settings, long press on one of the numbered presets across the top and a prompt to save will appear. To recall, short tap on a preset, (indicated by a thick blue line at bottom of preset box). Swipe right across preset bar to reveal additional presets.





© ROD AARON GAMMONS

Lit with AEOS 2 (key light) and NEO 3 with pink gel as hair/ fill



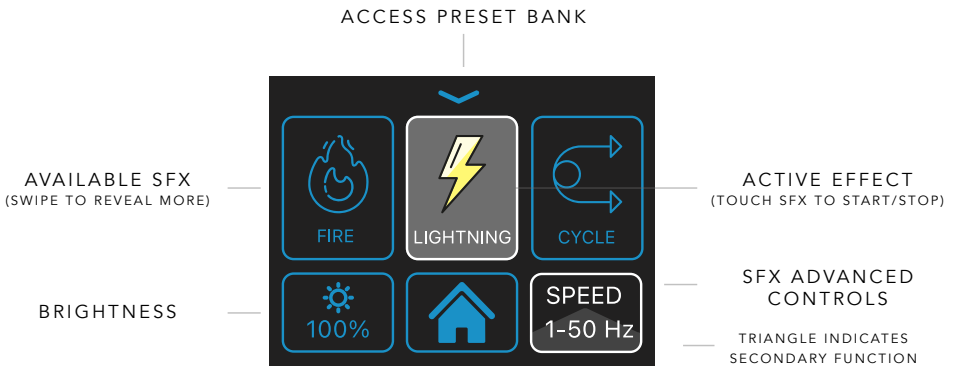
© SAM NASH

Lit with AEOS 2, w/ Diffuser dome as keylight, and NEO 3 for Blue fill light

SFX MENU

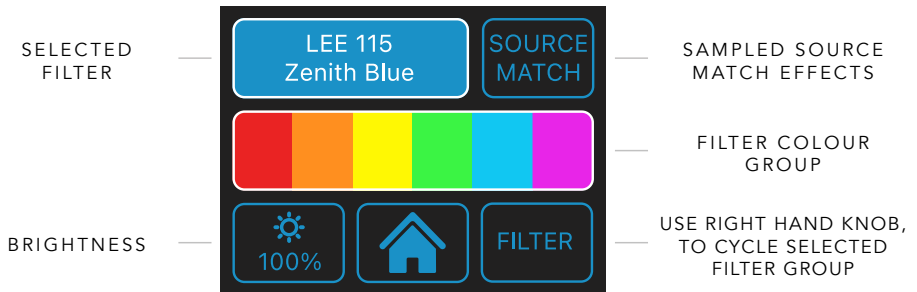
Enhance your feature film, music video or short film with Rotolight's award-winning SFX, which has been designed and developed with Stefan Lange, (James Bond - Skyfall/No Time to Die, Batman, Tomraider & many, many more). Swipe across the SFX row to reveal available SFX. Tap desired SFX to start the effect and tap once more to stop. Certain effects, (fade, gunshot and paparazzi) can also be triggered using the right-hand knob when selected via the app or the test-fire button on the Elinchrom Skyport trigger. Each effect typically has multiple adjustable parameters. A grey triangle on the bottom-right or bottom-left box indicates a secondary function. Tap to reveal and adjust accordingly. For example, touch to select the Police SFX; use the button-right knob to adjust SFX brightness or tap to adjust colour mode.

Note: The inbuilt SFX have colours assigned to them, (i.e. warm orange/red for fire) by default to produce realistic SFX. For fully customisable SFX, determined by the last-used HSI or filter colour, the default colours can be disabled in the SYS mode.



FILTER MENU

Access up to 2500 digital filters and sampled 'Source Match' effects using the 'GELS' menu. Tap to select preferred filter group, (i.e. 'RED') and use the right-hand knob to cycle available filters in that group. Click on the right-hand knob to switch between a daylight, 'D65', or tungsten, 'D32' emulation of the selected filter. The selected filter is indicated by the last digits of the displayed filter name. Use the left-hand knob to adjust brightness of the selected filter. Tap the top-right-hand box, 'Source Match' for real-world sampled lighting sources. Rotate the right-hand knob to cycle available Source Match samples.



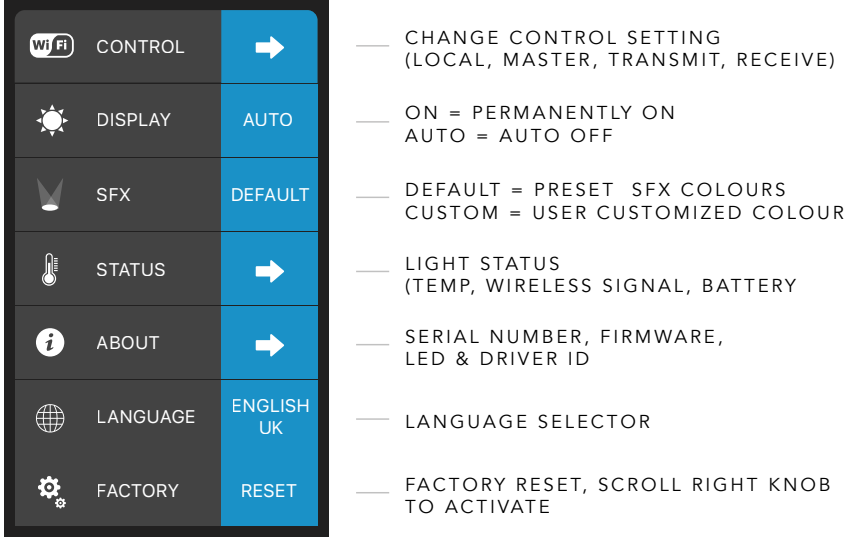
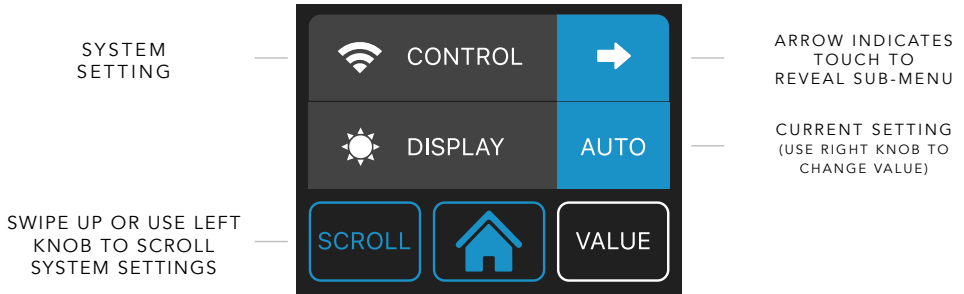


© ROD AARON GAMMONS

Lit with AEOS 2, w/ Diffuser dome, continuous mode. 2 X NEO 3's for Blue backlight

SYSTEM MENU

Adjust universal system parameters and apply factory reset in the SYS menu. Swipe up to reveal system parameters and use the right knob to adjust selected option.





© ROD AARON GAMMONS

Lit with AEOS 2, w/ Diffuser dome. Continuous mode.



© JASON LANIER

Lit with NEO 3 inside Umbrella softbox



© GREG GORMAN

Lit with AEOS 2

ROTLIGHT NATIVE iOS / Andriod APP

Sign up for updates at rotolight.com/support

To connect to the app:

1. Make sure the light is turned on as it will create a new, native WiFi Network.
2. On your mobile device, go to Settings -> WiFi and look for a new WiFi network named RTLTL.
3. Connect to RTLTL WiFi network and enter 'PASSWORD' as password; all upper case.
4. When your mobile device is connected to indicated WiFi, open Rotolight app.
5. From now on you can access different settings from the app.

Note: The app will be able to communicate with a light as long as they are in the same WiFi network named RTLTL.



LATEST FIRMWARE AND MANUAL

For all firmware updates, user manual and other resources, please visit www.rotolight.com/support

To apply a firmware update, download the latest firmware to a USB 2.0 type A stick, (not USB 3.0) and ensure it is formatted to Fat 32, (not Fat 32 extended). Ensure any connected battery has a reasonable charge level prior to starting the update process. Power off the light and insert the USB stick. Whilst clicking and holding down both knobs, power on the unit. Release knobs when the bootloader dialogue box appears. Select 'YES' to install the firmware. DO NOT power off the light during a firmware update and ensure the update is allowed to complete. A progress bar will appear and upon completion the light will restart.



SAFETY WARNINGS & NOTICES

1. Do not under any circumstance attempt to use the USB port for any purpose other than inserting a USB stick for firmware updates. Do NOT under any circumstance attempt to charge your phone of the NEO battery from the USB port. Doing so presents an immediate risk of fire or explosion. 2. Rotolight is a high performance hybrid flash and continuous light and places a unique demand on batteries in flash mode to achieve a zero recycle time flash. Rotolight only recommends the use of official Rotolight batteries for flash operation. 3. Only ever use the Rotolight official power supplies. Using any other power supply may present a risk of damage to the light, fire or explosion.



ROTOLIGHT.COM