



SwellPro SplashDrone 4 Multifunctional Waterproof Drone User Guide

December 5, 2021December 7, 2021

[Home](#) » [SwellPro](#) » SwellPro SplashDrone 4 Multifunctional Waterproof Drone User Guide 

SwellPro

**SplashDrone 4
Firmware Update Guide**

Visit www.swellpro.com for the latest version of this manual and firmware updates for your drone and accessories.



Visit www.swellpro.com for the latest version of this manual and firmware updates for your drone and accessories.

Contents [[hide](#)]

- [1 Thank You](#)
- [2 Using this Manual](#)
- [3 FAQ](#)
- [4 Video Tutorials](#)
- [5 Social Media](#)
- [6 Register Product Warranty](#)
- [7 Download the SDFly App](#)
- [8 SplashDrone 4 Firmware Update Guide](#)
- [9 Flight Control Firmware Updates](#)
- [10 Remote Control Firmware Updates](#)
- [11 Gimbal Firmware Updates](#)
- [12 Version Information](#)
- [13 Documents / Resources](#)
 - [13.1 Related Manuals / Resources](#)

Thank You

Thank you for purchasing the SplashDrone 4. We have designed and manufactured the SplashDrone 4 to the highest quality standards. Like any marine quipment, long-life and trouble-free operation rely on correct care and maintenance. With proper care and maintenance, you should enjoy your drone for many years. After flying in salt or contaminated water, always thoroughly rinse your SplashDrone 4 in freshwater immediately after user before salt and sediment can dry inside moving parts. It is important to familiarize yourself with the features of this unique drone by carefully studying his manual and particularly the priority sections indicated in the Table of Contents. Visit www.SwellPro.com for the latest manuals, software, and tips. Refer to the Version Information section at the end of this manual, which details additions and corrections to this manual.

Using this Manual

This document is designed to be printed or viewed on a computer or mobile device. If used electronically, you can search directly for terms like "Propeller" to find references. Additionally, you can click on any topic in the Table of Contents to navigate directly to that topic.

FAQ

The user guide is the best companion while using the product. For the specific problem using the product, the FAQ can be another great resource for ou to look at. Go to the SwellPro website, look for support >product support > the

product > FAQ to find the FAQ page. <https://www.swellpro.com/news/product-support.html>



Video Tutorials

Visit and subscribe to the SwellPro YouTube channel for tutorial videos and product information. Scan this QR code



with your camera phone to go to our channel.

https://www.youtube.com/channel/UC-TM9I1HHfly_0KPvgIFRIg

Social Media

Join our SwellPro Facebook page to meet other people who share their adventures with SwellPro.



www.facebook.com/SwellPro/

<https://www.facebook.com/swellpro/>

Register Product Warranty

Please register your product as soon as possible to ensure warranty coverage.

<https://www.SwellPro.com/info/register.html>

Download the SDFly App

Get the most from your SplashDrone 4 by flying with the SDFly app. This new, powerful mobile app enhances and optimizes the operation of the splash drone 4. Connected wirelessly to the SplashDrone 4 remote controller, the app allows logging, planning, recording of missions as well as the control and parameter setting of cameras and other modules in flight. Running the SDFly app when you fly adds advanced functionality like mapping, routing, and intelligent modes to the standard flight modes in the remote controller. For Apple devices, the iOS version is available for download on the AppStore. The Android version is available for download on the Google Play Store or directly from the SwellPro website: www.swellpro.com



www.swellpro.com

SplashDrone 4 Firmware Update Guide

Welcome to the SwellPro product guide. In this guide, we are going to show you how to update the SplashDrone 4 flight control, remote control, and gimbal firmware. First, you need a laptop with an internet connection, the product you want to update the firmware with, a USB cable, and a hex screwdriver.

Flight Control Firmware Updates

1. Download.

Go to <https://www.swellpro.com/splash-drone-4.html#download>, click to download “SwellPro Firmware Update Tool” and “SplashDrone 4 Flight ontrol Firmware”. Unzip the “SwellPro Firmware Update Tool”, open “Shark Firmware V2”. Unzip the “SplashDrone 4 Flight Control Firmware”. lick the first line and select the flight



control firmware.

2. Connect.

Turn over the aircraft, take off the “USB/Pairing Button” cover using the hex screwdriver.

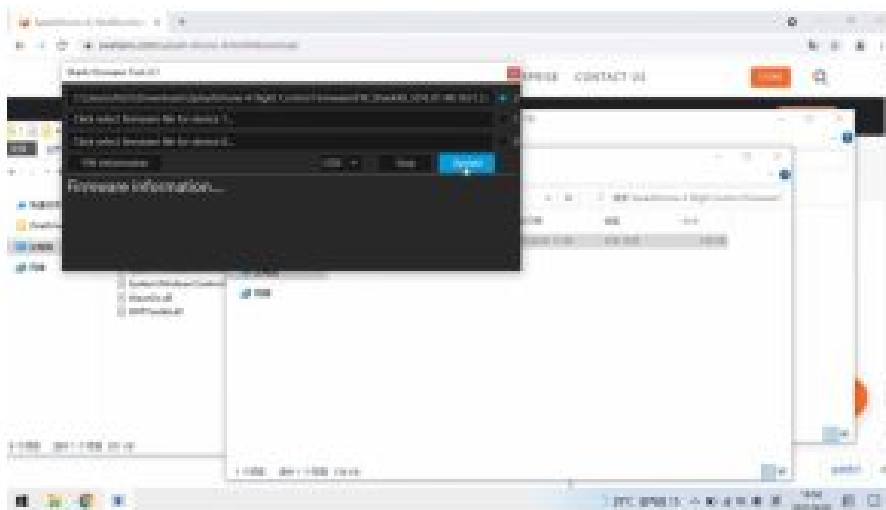


Connect the aircraft and the laptop using the USB cable. Power on the aircraft.



3. Update.

Click “Update”, the flight control will start to update. Please do not disconnect the USB cable during updates.



When the bar shows 100% and changes from gray to white, the update process is complete. Disconnect the USB cable and restart the aircraft. You can connect the USB cable and click “Firmware Information” to check if the firmware version is up-to-date.

After finish, the updates, install the cover back to the aircraft. Ensure the orange rubber ring is attached to the cover

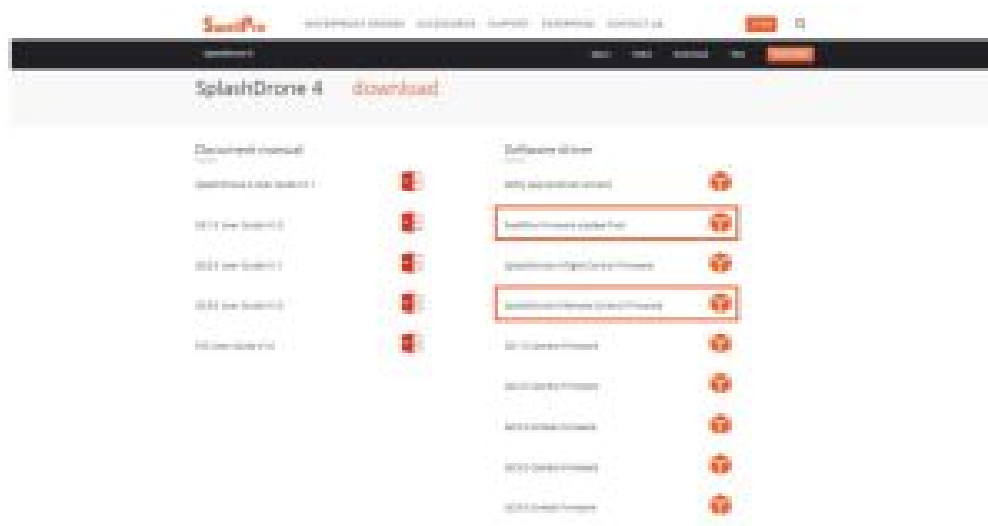


before installing.

Remote Control Firmware Updates

1. Download.

Go to <https://www.swellpro.com/splash-drone-4.html#download>, click to download “SwellPro Firmware Update Tool” and “SplashDrone 4 Remote control Firmware”. Unzip the “SwellPro Firmware Update Tool”, open “Shark Firmware V2”. Unzip the “SplashDrone 4 Remote Control Firmware”. Click the first line and select the



remote control firmware.

2. Connect.

Open the back waterproof cover, connect the remote controller to the laptop using the USB cable.

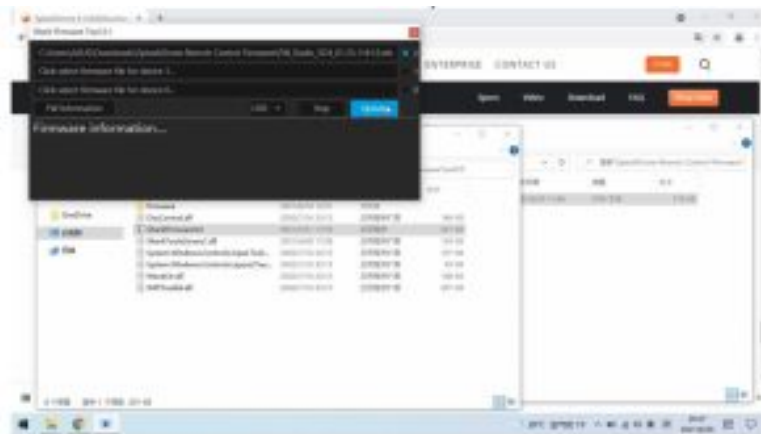


Long press the power button and remain pressing until the update is complete.



3. Update.

Click "Update", the remote control will start to update. Please do not disconnect the USB cable during updates. When the bar shows 100% and changes from gray to white, the update process is complete. Release the power button. Disconnect the USB cable and restart the remote controller. You can reconnect the USB cable and click "Firmware Information" to check if the firmware version is up-to-date.

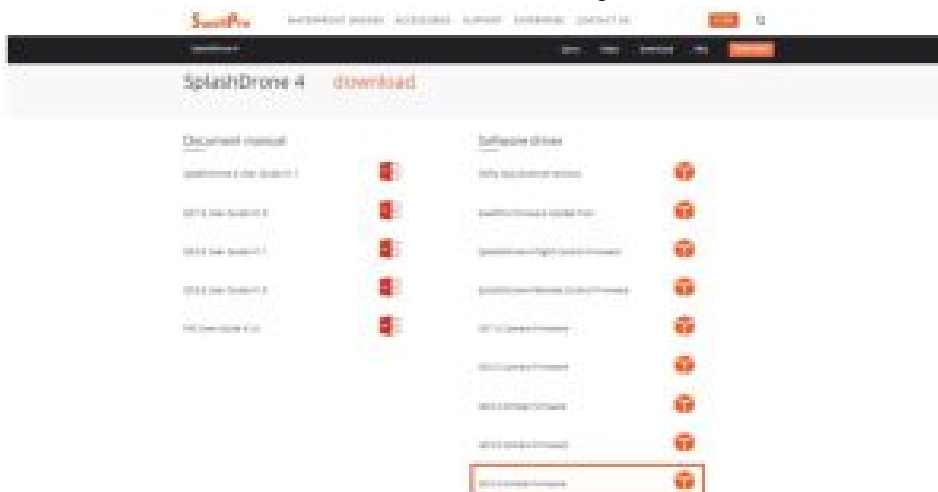


After finish, the updates, press the waterproof sealing back to the remote controller.

Gimbal Firmware Updates

1. Download.

Go to <https://www.swellpro.com/splash-drone-4.html#download>, click to download the corresponding gimbal firmware. We are using "GC3-S" in this video to demonstrate. Unzip the gimbal firmware file, open "Shark Firmware V2". The gimbal firmware is already pre-selected.



2. Connect.

Unscrew and take off the metal cover at the back of the gimbal using the hex screwdriver.

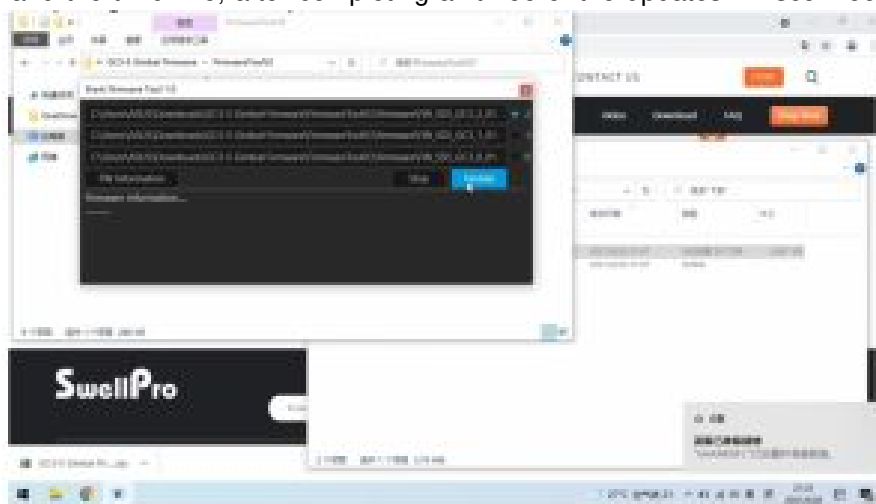


Connect the gimbal to the laptop using the USB cable. Power on the aircraft.



3. Update.

Click "Update", the gimbal will start to update. Please do not disconnect the USB cable during updates. When the bar shows 100% and changes from gray to white, the update process is complete. Repeat the process for the second and the third line, after completing all three of the updates. Disconnect the USB cable and restart



the aircraft.

After finish, the updates, install the metal cover back to the gimbal. Ensure the orange rubber ring is attached to the cover before installing.



If you need any support with your SwellPro product, please feel free to contact us.

Version Information

SwellPro products are constantly improving, so as are the product user guides. It is recommended to visit www.swellpro.com to check and download the latest user guide.

Version

1.0 SplashDrone 4 Firmware Update Guide 1.0 Edition

Documents / Resources



[SwellPro SplashDrone 4 Multifunctional Waterproof Drone](#) [pdf] User Guide
SplashDrone 4, Multifunctional Waterproof Drone

Related Manuals / Resources



[HobbyEagle A3 Configurator Installation Guide](#)

A3 Configurator a3-configurator-installer-1.0.0.msi
dotNetFx40_Full_x86_x64.exe Installation Guide
WWW.HOBBYEAGLE.COM



[IKEA TJUSIG Installation Guide](#)

IKEA TJUSIG Installation As wall and door materials vary, screws for fixing to wall or door are not...



[IKEA KONSTRUERA Drawer Installation Guide](#)

IKEA KONSTRUERA Drawer Installation Guide Required Tools 4x 4x 2x 12x 2x 1x WARNING Assembly Instructions

[CROSSCALL X-BIKE User Guide](#)

User Guide X-LINK™* magnetic mount Double ball joint for optimal orientation Notched strap to be attached to the...



[Manuals+](#),

- [home](#)
- [privacy](#)