

SmallRig



Cheese Mount Plate

通用多功能安装板

Operating Instruction

SmallRig Mounting Cheese Plate 1598 is equipped with 1/4"-20 and 3/8"-16 threaded holes in standard spacing (9mm center to center). It can be mounted on SmallRig railblocks, dovetails and short rods. It works as a switching plate when attached to the bottom of a DSLR cage.

Safety Guidelines

1. Environment

Do not use the product underwater, in extreme temperatures (e.g., freezing or direct heat), corrosive environments, or excessive dust. Dry metal parts immediately after liquid contact to prevent corrosion.

2. Load Capacity

Do not exceed the maximum weight capacity indicated on the product. Overloading risks structural failure, deformation, or accidental drops.

3. Cleaning & Maintenance

Clean surfaces with a dry, soft cloth. Avoid chemicals like alcohol or solvents. Ensure dry and ventilated conditions for long-term storage.

4. Structural Integrity

Do not modify the product (e.g., drilling, cutting)—this compromises structural integrity and increases drop risks.

5. Malfunctions

Stop use immediately if you notice deformation, unusual noises, or loose components, and contact support.

In the Box

Baseplate	× 1	1/4" Screw	× 2
Hex Spanner	× 1	Guarantee Card	× 1

Product Details



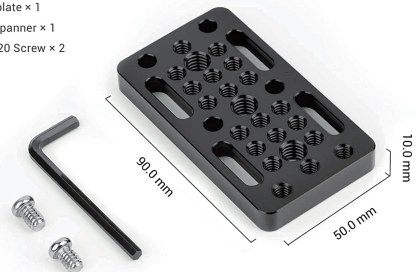
Specifications

Package Includes

Baseplate × 1

Hex Spanner × 1

1/4"-20 Screw × 2



Specifications

Brand
SmallRig

ID
1598

Net Weight
70.0 g

Material
Aluminum Alloy

Manufacturer Email: support@smallrig.com

Manufacturer: Shenzhen Leqi Innovation Co., Ltd.

Add: Rooms 101, 701, 901, Building 4, Gonglianfuji Innovation Park, No. 58, Ping'an Road,
Dafu Community, Guanlan Street, Longhua District, Shenzhen, Guangdong, China.

Consignor: Shenzhen LC Co., Ltd.

Add: Room 201, Building 4, Gonglianfuji Innovation Park, No. 58, Ping'an Road,
Dafu Community, Guanlan Street, Longhua District, Shenzhen, Guangdong, China.

RoHS

CE



Séparez les éléments avant de trier



Made in China