

PRECAUTIONS

- 1) Review manual before operating.
- 2) Do not use if damaged.
- 3) Do not attempt to repair yourself. Contact Smith-Victor for service.
- 4) Do not use in wet areas.
- 5) Do not touch power cord with wet hands.
- 6) Never insert metal objects into cooling holes.
- 7) Use only the AC adapter packed in this set.
- 8) Avoid moving the light by pulling on the power cord.
- 9) Turn off light before unplugging.
- 10) Do not turn off by unplugging the cord from the wall.

SMITH-VICTOR® 1 YEAR WARRANTY

Smith-Victor warrants to the first commercial owner to be free from defects in the material and workmanship for a period of one (1) year from the date of purchase and will repair or replace product found to be defective under normal use. Warranty does not cover damage caused by shipment, by product abuse, accident, modification, disassembly or use beyond intended use specified by Smith-Victor.

This warranty is the only warranty made to any person by Smith-Victor and is in lieu of all other expressed or implied warranties. The remedies set forth in this warranty shall be the exclusive remedies available to any person for breach of this warranty. Under no circumstances shall Smith-Victor be liable to any person for incidental or consequential damages, whether arising out of breach of warranty or other contract, negligence, strict liability or other tort or otherwise.

Smith-Victor is a division of **PromarkBRANDS**

1268 Humbracht Circle, Bartlett, IL 60103 U.S.A.

800-348-9862 or 630-830-9200

sales@smithvictor.com | www.smithvictor.com

www.promarkbrands.com

mola
SOFTLIGHTS

norman

DLC
DOT LINE

OMEGA
BRANDLESS
DISTRIBUTION

Speedion

PHOTOFLEX

NADY
SYSTEMS

LOGAN

lumedyme

SV

PHOTOGENIC

COOL-LUX

radiopopper

QUANTUM

SATURNPRO48

48" Bi-COLOR LED RING LIGHT SYSTEM

SMITH-VICTOR
SV
Bi-COLOR LED
PRO
SERIES

USER MANUAL

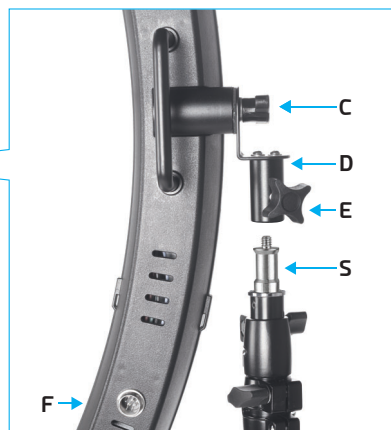
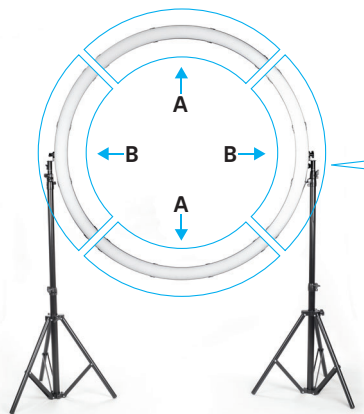
Model: SatPro48

Item: 401698



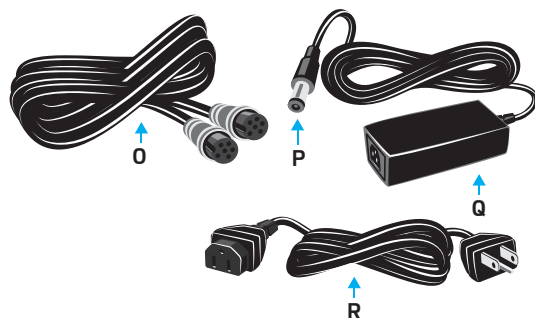
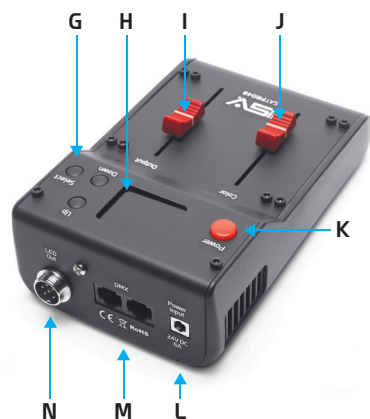
FEATURES

- The ultimate in Ring lights- 48" of soft wraparound light
- Ideal for portrait, glamour, fashion, product photography and more
- Produces 2200 Lux at 3'
- 1408 LEDs
- Adjustable Color Temperature: 3000~5500K
- High Quality 95 CRI LEDs
- Dimming from 1~100%



PARTS

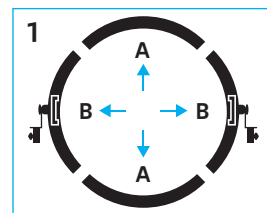
- A. Top/Bottom LED panel (2pcs)
- B. Left/Right LED panel (2pcs)
- C. Wing Nut (2pcs)
- D. Light Stand Connector (2pcs)
- E. Spigot Knob (2pcs)
- F. Controller Input
- G. Function/Selector
- H. OLED Display
- I. Brightness
- J. Color Temp
- K. Power On/Off
- L. DC Power Input
- M. DMX
- N. Controller Output
- O. Power Cable
- P. DC Power Input Cable
- Q. AC/DC Adapter
- R. AC Adapter Cable
- S. Stand Spigot



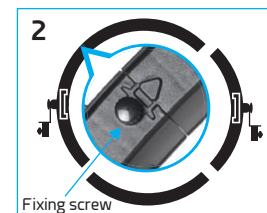
CONTENTS

- (1) 48" Ring Light
- (4) Diffusers
- (1) Control Module with Control Cable
- (1) AC Switching Power Supply
- (2) Stands
- (1) Fitted Carry Case

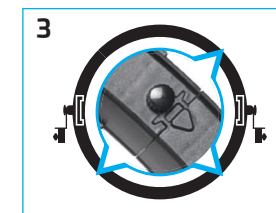
LED ASSEMBLY



Place all four LED panels face down on a flat surface. (A=top/bottom) (B=left/right, with handles and connectors).

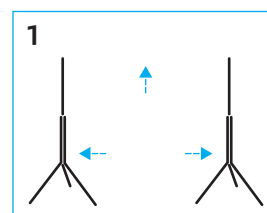


Connect LED panel A to B and insert and tighten the fixing screw, securing the panels together.

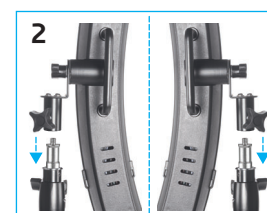


Repeat step 2 for the remaining 2 LED panels.

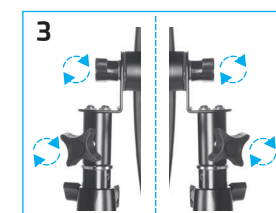
SATURNPRO048/STANDS ASSEMBLY



Extend both light stands 4' apart.



Lift the SATURNPRO048 using handles and place connectors (D) over stand spigots (S). (two people)



Tighten left and right spigot knobs (E) and wing nut (C).

POWER

- Connect the controller input (F) to the controller output (N) with the power cable (O).
- Connect the DC power input (L) to the AC/DC Adapter (Q) with the DC power input cable (P).
- Connect the AC/DC adapter (Q) to an AC power source with the AC adapter cable (R).

CONTROL MODULE CONTROLS

- Press the power button (K) to turn the light on. Press it again to turn the light off.
- Press the select button (G) to enter the settings.
- Press the up and down buttons (G) to scroll through the setting options.
- Press the select button (G) to select that option.
- Press the power button (K) to get back to the menu.
- Push the slider buttons (I, J) to adjust the color temperature and brightness, (when in local mode).

SPECIFICATIONS

Color Rendering Index.....	>95
Lux.....	2200 @ 3 ft
LED Count.....	1408
LED Life Expectancy.....	50,000+ hrs
Variable Color temperature.....	3000~5500K
Brightness Adjustment.....	1~100%
Beam Angle.....	120°
Rotation.....	360°

AC Power Supply Input.....	100-240VAC 2A
AC Power Supply Output.....	24VDC 6.25A
Input Power.....	150W
Materials.....	ABS/Aluminum
Dimensions.....	OD 47.5", ID 42.25"
Weight.....	13.5 lb