



FLIP-ZIP

MANUAL

TAKP4H58



TAKAMA FLIP-ZIP

MULTI-FUNCTIONAL TRIPOD MONOPOD KIT

INTRODUCTION

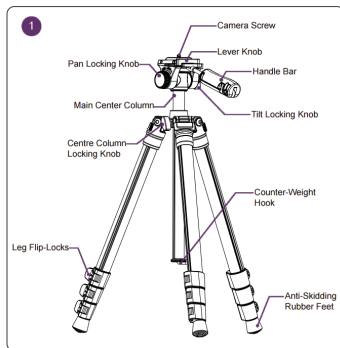
Thanks for choosing Takama!

The perfect hybrid accessory for photo and video cameras, this unique tripod will bring stability and control to your stills and footage, both to traditional imaging and smartphone based capture, making your final product more appealing and professional. The Takama brand represents consumer products of professional quality.

Make yourself familiar with all of the features of the FlipZip. You'll enjoy its use even more.

KEY FEATURES (Illustration - 1)

- Quick Flip Lock Legs
- Strong Aluminum Alloy 3 Section Rubber Tipped Legs
- Full Feature 2 Way Tripod Head
- Tilt Handle Opens to Reveal Smartphone Clip System
- Center Column Transforms into a Selfie Stick
- Quick Release Camera Plate
- Trek Friendly Size and Weight
- Legs Assume Variable Angles
- Folds Down to a Mere 18.8"

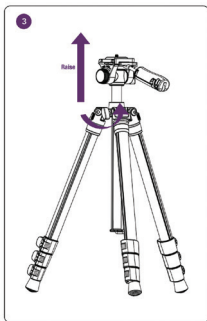
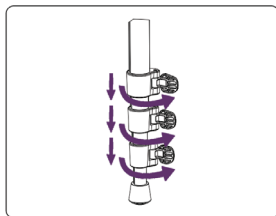


SETTING UP THE TRIPOD

EXTENDING THE LEGS

Before spreading the legs apart, extend them to the desired length, this will prevent tipping due to uneven leg extension. To extend the legs, flip open the leg locks, pull the leg extensions out, and flip closed the leg locks. Only work on one leg lock at a time. Once all the legs are at the same length, spread the legs apart to your chose angle.

Once the tripod is set up and the legs secured, several adjustments can be made. These changes should be made with extra care if the camera is mounted on the tripod.



HEIGHT

The center column can be raised and lowered. First loosen the center column screw, then slide the column to raise or lower the center column. Finish by tightening the center column screw.

ADJUSTABLE CENTER COLUMN (Illustration 3)

To release the center column, turn the center column locking knob counterclockwise, adjust it to desired height, and then lock the column by rotating the knob clockwise.

Now is also a good time to check that all the leg locks are tightened before you put any equipment on the tripod. On uneven surfaces and terrain, you can extend the legs to different heights so that the camera is level and also stable.

ATTACHING YOUR CAMERA (Illustration 4)

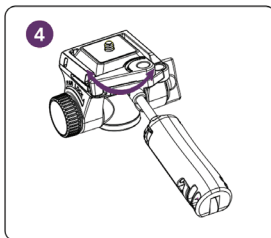
To Use Quick Release Plate, rotate the lever to the right.
Pull the lever knob to release or lock the quick release plate

Now is a good time to tighten the tilt (vertical) control, by tightening the tilt control knob clockwise, this will ensure that your camera doesn't tip off the plate when installed.

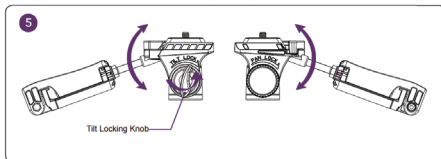
The QR plate has a screw. Locate your camera's tripod screw hole and align it with the QR plate screw. Tighten the screw as far as possible by twisting the handle on the bottom of the QR plate until the camera is firmly attached to the QR plate. Slide the QR plate attached to the bottom of the camera back into its slot on the tripod head.

ENSURE THAT THE RELEASE HANDLE LOCKS FIRMLY INTO PLACE AFTER THE QR PLATE IS RETURNED, SECURING THE CAMERA TO THE TRIPOD.

Do not let go of the camera until you are sure it is secured in place.



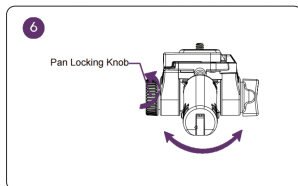
TILT



The camera can be tilted downward or upward. Firmly grasp the tilt control knob and loosen it by twisting it counterclockwise. Position the camera at the desired angle, then tighten by twisting the tilt control knob clockwise. Test for looseness before releasing.

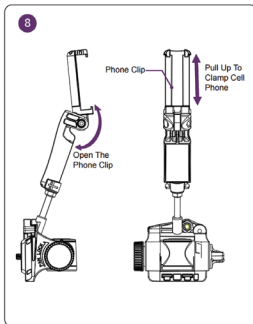
PAN

The camera can be panned from side to side 360° by loosening the pan control knob and then swiveling the tripod head. The long handle should be used to pan for more precise positioning of the camera. Tighten the pan control knob to lock the camera position.



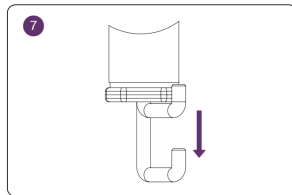
A HIDDEN SPRING HOOK (Illustration 7)

is located at the bottom of the Center Column. For stable shooting, the hook can be used to hang sandbag or equipment bag. Extend the spring loaded hook to the desired position.



CENTER COLUMN MONOPOD AND SELFIE STICK

The Center Column can be completely removed to create a Monopod and Selfie Stick using the Tripod Head Smartphone Clip as the phone holder and a tripod leg as the extendable monopod. First remove the bottom Spring Hook device from the column by unscrewing it from the bottom. Loosen the center column tightening knob enough so that the entire column is able to lift free of the tripod. Now, replace the empty bottom end of the column with the hole adapter cap. Unscrew the removable leg from the tripod and attach it to the receiving hole threaded to match the leg. Now you have an extendable monopod to hold cameras or smartphones securely.



THE SMARTPHONE CLIP (Illustration 8)

Reveal the concealed smartphone clip by swinging out the tilt lever handle pivot away from the shaft, according to the arrow direction. The adjustable smartphone clip can be pulled up to clamp a variety of sizes. Test the grasp the smartphone securely on the clamp and use the head as you would with a camera.



SAFETY & TIPS

Exceeding the suggested load of the tripod can result in tipping or insufficient control when panning/tilting. So don't do it.

Always extend the legs to the widest area possible. The wider the leg spread, the more stable the tripod will be.

Ensure the head and camera is locked before letting gravity take over.

Remove the camera, video device or smartphone before moving the tripod around or transport.

Do not shoot vertical video for monitors. Except when your viewing device is vertical, of course.

Keep out of reach of children.

Question about our product line? Need Product Support?

We are proud of our products and celebrate our customers. We are with you, from product selection to everyday use. Be secure with your purchase and reach us as you need.

Email us: brands@adorama.com

Call: 212-647-9300

Address: Adorama Brands, 42 West 18th Street, New York, NY 10011

You can always contact us at BRANDS@ADORAMA.COM
for personal technical support.

Our web site contains a wide range of Support and FAQ pages
with valuable technical assistance.

Takama is a registered trademark of ADORAMA CAMERA.
© 2017 Adorama Camera, Corp. All Rights Reserved.

ONE YEAR TAKAMA LIMITED WARRANTY

Takama warrants to the original purchaser that your Takama product shall be free from defects in material and workmanship for the period of one (1) year from the date of purchase (or delivery as may be required in certain jurisdictions), or thirty (30) days after replacement, whichever comes later.

Takama's entire liability and your exclusive remedy for any breach of warranty shall be, at Takama's option, to repair or replace the hardware, provided that the hardware is returned to the point of purchase or such other place as Takama may direct with a copy of the sales receipt or dated itemized receipt. Takama may, at its option, replace your product, offer to provide a functionally equivalent product, or repair any product with new, refurbished or used parts as long as such parts are in compliance with the product's technical specifications. Any replacement hardware product will be warranted for the remainder of the original warranty period or thirty (30) days, whichever is longer, or for any additional period of time that may be applicable in your jurisdiction. If the product has been discontinued, the warranty provider reserves the right to replace it with a model of equivalent quality and function.

This warranty does not cover problems or damage resulting from accident, abuse, misapplication, or any unauthorized repair, modification or disassembly, improper operation or maintenance, normal wear and tear, or usage not in accordance with product instructions or connection to improper voltage supply, use of consumables, such as replacement batteries, not supplied by Takama, except where such restriction is prohibited by applicable law.

Except where prohibited by applicable law, this warranty is nontransferable and is limited to the original purchaser and the country in which the product was purchased. This warranty gives you specific legal rights, and you may also have other rights, including a longer warranty duration that may vary under local laws.

To start a warranty claim contact the Takama Customer Service Department to obtain a return merchandise authorization ("RMA") number, and return the defective product to Takama, along with the RMA number and proof of purchase.

The image features a black background with several thin, parallel purple lines in the upper right corner, creating a sense of depth and movement. In the center, the word "TAKAMA" is written in a white, sans-serif font. The letter "A" is replaced by a solid purple triangle. In the bottom left corner, there is a small, dark, pixelated pattern.

TAKAMA