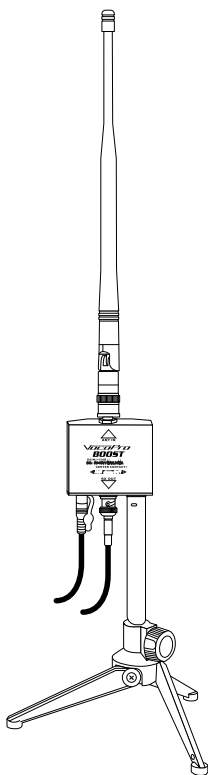


VocoPro®



Boost

Dual Wireless Microphone
Antenna Extension/Booster Kit

OWNER'S MANUAL

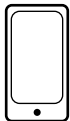
WELCOME

And thank you for purchasing VocoPro BOOST Antenna Extension and Booster Kit from VocoPro. Along with quality products our commitment to customer satisfaction means we have technical support professionals ready to assist you. Be sure to visit our website: www.vocopro.com for the latest information on new products.



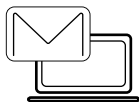
We are at:

VocoPro
1728 Curtiss Court
La Verne, CA 91750



Phone:

Toll Free: 800-678-5348
TEL: 909-593-8893
FAX: 909-593-8890



E-mail:

info@vocopro.com

Tech Support:

tech-support@vocopro.com

Legal Disclaimer

All rights reserved. Information, specifications, diagrams, images, and instructions herein are subject to change without notice. VocoPro Products, logo and identifying product names and numbers herein are trademarks of VocoPro. Copyright protection claimed includes all forms and matters of copyrightable materials and information now allowed by statutory or judicial law or hereinafter granted. Product names used in this document may be trademarks or registered trademarks of their respective companies and are hereby acknowledged. All non-VocoPro Products, brands and product names are trademarks or registered trademarks of their respective companies.

VocoPro hereby disclaims any and all liabilities for property, equipment, building, and electrical damages, injuries to any persons, and direct or indirect economic loss associated with the use or reliance of any information contained within this document, and/or as a result of the improper, unsafe, insufficient and negligent assembly, installation, rigging, and operation of this product.

Purchase Info: Please record the model number and serial number below, for easy reference, in case of loss or theft. These numbers are located on the packaging the item came in. *This is not considered a receipt. Please keep a copy of your purchase receipt, provided by the dealer, in your records. A receipt is required for all warranty work.*


Model Number

Serial Number

Date of Purchase

Place of Purchase

CALIFORNIA PROP 65 WARNING

 **WARNING:** Cables, Cable Assemblies, and Printed Circuit Boards can expose you to chemicals including lead and lead compounds which are known to the State of California to cause cancer and birth defects or other reproductive harm. For more information, go to **www.P65Warnings.ca.gov**



CAUTION

RISK OF SHOCK



CAUTION: To reduce the risk of electric shock, do not remove cover (or back). No user-serviceable parts inside. Only refer servicing to qualified service personnel.

Explanation of Graphical Symbols



The lightning flash & arrowhead symbol, within an equilateral triangle, is intended to alert you to the presence of danger.



The exclamation point within an equilateral triangle is intended to alert you to the presence of important operating and servicing instructions.

WARNING: To reduce the risk of fire or electric shock, do not expose unit to rain or moisture.



This device complies with Part 15 of the FCC rules. Operation is subject to the condition that this device may not cause harmful interference.

FCC license may be required

1. Read Instructions - All the safety and operating instructions should be read before the appliance is operated.
2. Retain Instructions - The safety and operating instructions should be retained for future reference.
3. Heed Warnings - All warnings on the appliance and in the operating instructions should be adhered to.
4. Follow Instructions - All operating and use instructions should be followed.
5. Attachments - Do not use attachments not recommended by the product manufacturer as they may cause hazards.
6. Water and Moisture - Do not use this unit near water. For example, near a bathtub or in a wet basement and the like.
7. Carts and Stands - The appliance should be used only with a cart or stand that is recommended by the manufacturer.
- 7 A. An appliance and cart combination should be moved with care. Quick stops, excessive force, and uneven surfaces may cause an overturn.
8. Ventilation - The appliance should be situated so its location does not interfere with its proper ventilation. For example, the appliance should not be situated on a bed, sofa, rug, or similar surface that may block the ventilation slots.

9. Heat - The appliance should be situated away from heat sources such as radiators, heat registers, stoves, or other appliances (including amplifiers) that produce heat.
10. Power Sources - The appliance should be connected to a power supply only of the type described in the operating instructions or as marked on the appliance.
11. Grounding or Polarization - Precautions should be taken so that the grounding or polarization means of an appliance is not defeated.
12. Power-Cord Protection - Power-supply cords should be routed so that they are not likely to be walked on or pinched by items placed upon or against them, paying particular attention to cords at plugs, convenience receptacles, and the point where they exit from the appliance.
13. Cleaning - Unplug this unit from the wall outlet before cleaning. Do not use liquid cleaners or aerosol cleaners. Use a damp cloth for cleaning.
14. Power lines - An outdoor antenna should be located away from power lines.
15. Non-use Periods - The power cord of the appliance should be unplugged from the outlet when left unused for a long period of time.
16. Object and Liquid Entry - Care should be taken so that objects do not fall and liquids are not spilled into the enclosure through openings.

17. **Damage Requiring Service** - The appliance should be serviced by qualified service personnel when:

- A. The power supply cord or plug has been damaged; or
- B. Objects have fallen into the appliance; or
- C. The appliance has been exposed to rain; or
- D. The appliance does not appear to operate normally or
exhibits a marked change in performance; or
- E. The appliance has been dropped, or the enclosure damaged.

18. **Servicing** - The user should not attempt to service the appliance beyond that described in the operating instructions. All other servicing should be referred to qualified service personnel.

Note: To CATV system installer's (U.S.A.): This reminder is provided to call the CATV system installer's attention to Article 820-40 of the NEC that provides guidelines for proper grounding and, in particular, specifies that the cable ground shall be connected as close to the point of cable entry as practical.

1. IMPORTANT NOTICE: DO NOT MODIFY THIS UNIT! This product, when installed as indicated in the instructions contained in this manual, meets FCC requirements. Modifications not expressly approved by Vocopro may void your authority, granted by the FCC, to use this product.

2. IMPORTANT: When connecting this product to accessories and/or another product use only high

quality shielded cables. Cable(s) supplied with this product **MUST** be used. Follow all installation instructions. Failure to follow instructions could void your FCC authorization to use this product in the U.S.A.

3. NOTE: This product has been tested and found to comply with the requirements listed in FCC Regulations, Part 15 for Class “B” digital devices. Compliance with these requirements provides a reasonable level of assurances that your use of this product in a residential environment will not result in harmful interference with other electronic devices. This equipment generates/uses radio frequencies and, if not installed and used according to the instructions found in the owner’s manual, may cause interference harmful to the operation of other electronic devices. Compliance with FCC regulations does not guarantee that interference will not occur in all installations. If this product is found to be the source of interference, which can be determined by turning the unit “Off” and “On”, please try to eliminate the problem by using one of the following measures:

Relocate either this product or the device that is being affected by the interference.

Use power outlets that are on different branch (circuit breaker or fuse) circuits or install AC line filter(s).

In the case of radio or TV interference, relocate/reorient the antenna. If the antenna lead-in is 300-ohm ribbon lead, change the lead-in to coaxial type cable.

If these corrective measures do not produce satisfactory results, please contact your local retailer authorized to distribute Vocopro products. If you can not locate the appropriate retailer, please contact Vocopro, 1728 Curtiss Court, La Verne, CA 91750.

CAUTION:
READ THIS BEFORE OPERATING YOUR UNIT

1. To ensure the finest performance, please read this manual carefully. Keep it in a safe place for future reference.
2. Install your unit in a cool, dry, clean place - away from windows, heat sources, and too much vibration, dust, moisture or cold. Avoid sources of hum (transformers, electric motors). To prevent fire or electrical shock, do not expose to rain and water.
3. Do not operate the unit upside-down.
4. Never open the cabinet. If a foreign object drops into the set, contact your dealer.
5. Place the unit in a location with adequate air circulation. Do not interfere with proper ventilation; this will cause the internal temperature to rise and may result in a failure.
6. Do not use force on switches, knobs or cords. When moving the unit, first turn the unit off. Then gently disconnect the power plug and the cords connecting to other equipment. Never pull the cord itself.
7. Do not attempt to clean the unit with chemical

solvents: this might damage the finish. Use a clean, dry cloth.

8. Be sure to read the “Troubleshooting” section on common operating errors before concluding that your unit is faulty.

9. This unit consumes a fair amount of power even when the power switch is turned off. We recommend that you unplug the power cord from the wall outlet if the unit is not going to be used for a long time. This will save electricity and help prevent fire hazards. To disconnect the cord, pull it out by grasping the plug. Never pull the cord.

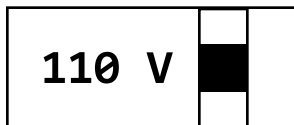
10. To prevent lightning damage, pull out the power cord and remove the antenna cable during an electrical storm.

11. The general digital signals may interfere with other equipment such as tuners or receivers. Move the system farther away from such equipment if interference is observed.

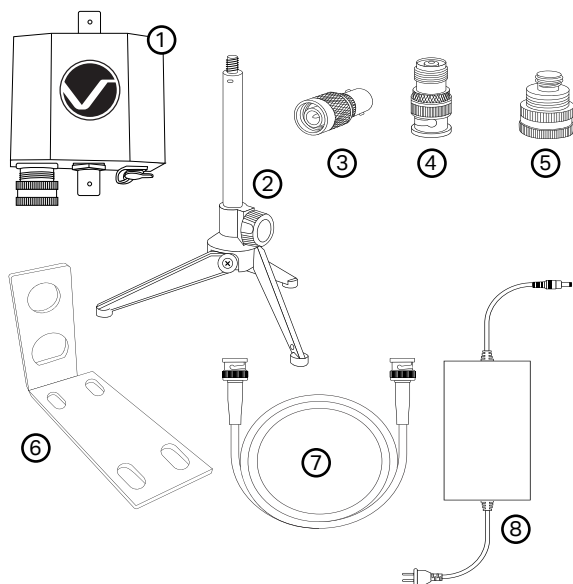
NOTE: Please check the copyright laws in your country before recording from records, compact discs, radio, etc. Recording of copyrighted material may infringe copyright laws.

Voltage Selector (General Model Only)

Be sure to position the voltage selector to match the voltage of your local power lines before installing the unit.



What's In the Box



- 1. Antenna Booster x2**
- 2. Tabletop Mount Stand x2**
- 3. BNC Male to TNC Female Adapter x2**
- 4. TNC Male to BNC Female Adapter x2**
- 5. Microphone Stand Adapter x2**
- 6. Wall Mount Bracket x2**
- 7. BNC Coaxial Cable x2**
- 8. Power Supply x2**

Getting Connected

Thank you for purchasing BOOST antenna extension and booster kit.

Please note this will only work with wireless microphone systems with detachable BNC or screw type TNC UHF antenna jacks.

To begin, please determine where you would like to relocate the antenna. The system comes with an 8 foot extension cable, if a longer length is needed please use 50 Ohm low noise coaxial cables manufactured for wireless microphone antenna use.

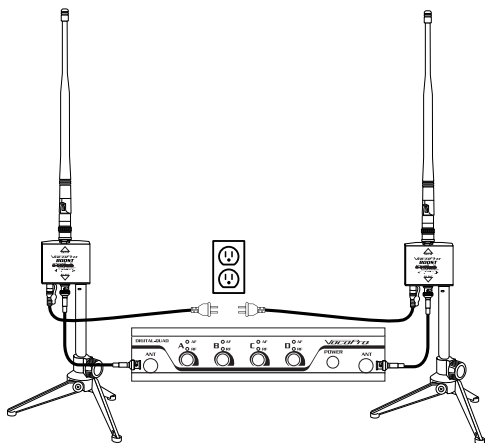
- Unscrew the antenna from the wireless microphone receiver unit and replace this with the coaxial cable (Use the BNC female to TNC Male Adapter if needed).
- Connect the other end of the coaxial cable to the BOOST's antenna booster RX OUT socket.
- Connect the antenna from your wireless microphone receiver to the ANT IN on the antenna booster. (Use the TNC Female to BNC Male Adapter if needed).

Getting Connected

- Connect power with the power supply to the antenna booster (No power supply is needed on some wireless microphone receivers that provide power for antenna distribution system)
- Test out the range or the previous dead spot to see if the BOOST has increased the range or got rid of the dead spot.

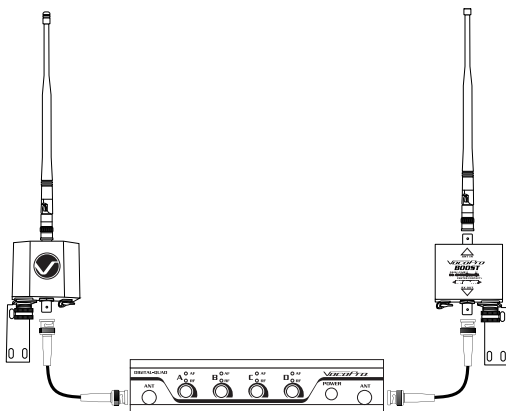
If not, please see *Troubleshooting* section.

1.Placing the antenna Booster on the table or mic stand.

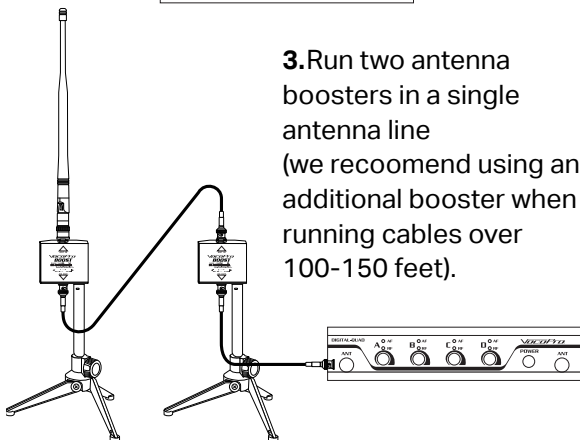


Getting Connected

2.Placing the antenna booster on the wall mount bracket.



3.Run two antenna boosters in a single antenna line (we recommend using an additional booster when running cables over 100-150 feet).



Continues on next page

Troubleshooting

If you are still experiencing signal dropouts or dead zones, please follow the steps below.

1. Check to make sure your outlet has power.
2. Ensure the power adapter is plugged securely into the wall and the other end is securely in the antenna booster.
3. Make sure the coaxial cable is twisted all the way onto the booster and onto your wireless receiver. The TNC connectors are threaded and twist around several times before it is fastened all the way. The BNC connectors line the pegs up with the groove and twist a quarter turn and snap in.
4. Make sure the antenna is also fastened all the way onto the booster.
5. Try to relocate the antenna and test again. You want to have clear line of sight between the antenna and the transmitters.

Please note that the Boost amplifies the range and sensitivity of the receiver, so if it is in an area with heavy RF traffic, it may or may not solve issues caused by RF interference or RF noise from outside sources.

Notes

[illegible]

Our Team is Here to Help



Please do not return to the retailer if you are having a technical issue operating or connecting the unit. Additional information and support can be found at- **vocopro.com/support**

Toll Free: 800-678-5348

TEL: 909-593-8893

FAX: 909-593-8890

Email Tech Support at:
techsupport@vocopro.com

IEM-900R/T

Owner's Manual

© VocoPro 2019

v1.0620

www.vocopro.com



Visit us on
Facebook,
Twitter, and
Instagram