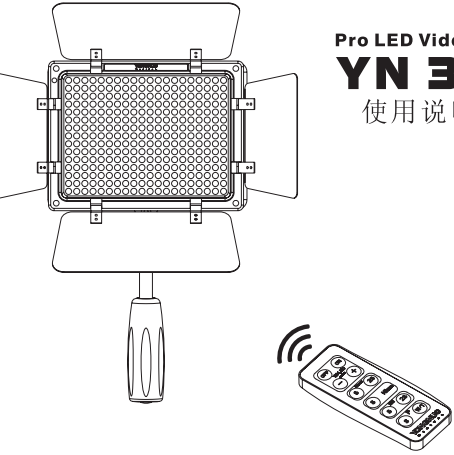


Pro LED Video Light YN 300 使用说明书

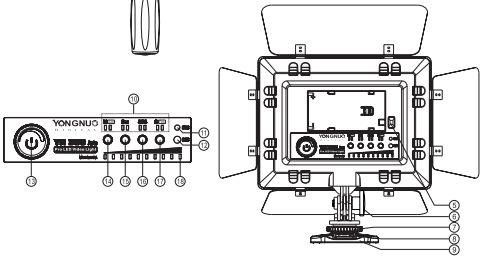


在使用产品前，请认真阅读说明书并妥善保管好以便将来查阅

总述
首先感谢您使用永诺YN300 LED摄像灯，它由300颗超大发光芯片的LED灯珠构成，亮度完全满足各种环境的使用需求；它采用编码器数字调光模式，调光精准、可靠，不会因长期使用导致灯光抖动等不良现象；另外它还拥有自动控制亮度、无线遥控调节亮度等强大功能。

一、产品结构

- 1、反光板
- 2、灯珠
- 3、前置红外接收器
- 4、手柄
- 5、电池锁扣
- 6、梅花调节螺丝
- 7、热靴固定底座
- 8、金属热靴底座
- 9、微型底座
- 10、功能指示灯
- 11、感光元件
- 12、后置红外接收器
- 13、电源开关/亮度调节旋钮
- 14、手动/自动模式切换按钮
- 15、电量测试按钮
- 16、“SOS国际求救信号”切换按钮
- 17、微调切换按钮
- 18、亮度指示灯



二、功能简介

- 1、YN300采用300个高品质超大发光芯片LED灯珠，亮度更高、光斑更均匀、寿命更长。
- 2、YN300采用编码器数字调光，可分粗调、细调模式，使用更方便。
- 3、内置感光芯片，可以根据环境光线的强弱自动调节摄像灯的亮度。
- 4、配置红外遥控器，可以离机调节亮度及开关。
- 5、采用专业LED驱动芯片，光线稳定，效率高达93%。
- 6、既可以安装在摄像机上使用，又可以通过手柄手持使用。
- 7、配置4块色温板，适合不同环境下使用。

三、使用方法

1、安装电池

安装锂电池时按箭头方向将电池装入卡槽。

适用电池：索尼NP-F系列

NP-F750 NP-F550 NP-F950/B

NP-F530 NP-F970 NP-F970/B

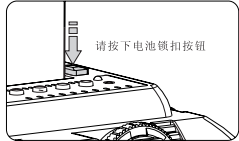
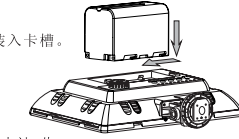
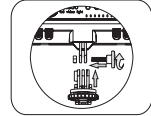
NP-F570 NP-F770 NP-F960

NP-F930 NP-F930/B NP-F950

NP-F330

注：建议使用4000mah容量以上的电池，此容量电池在最高亮度下可使用约90分钟，2200mah容量在最高亮度下可使用约40分钟，5800mah容量在最高亮度下可使用约130分钟，不使用时请取下电池。

拆卸锂电池时，请先按下电池锁扣然后再取出锂电池



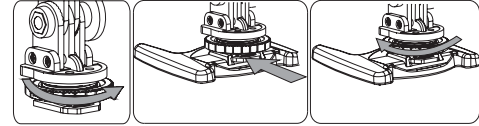
2、安装摄像灯
先将灯脚通过梅花胶头螺丝固定在摄像灯底部，根据您需要的方向调节摄像灯角度。

3、根据您的需要可以通过以下方式固定摄像灯：

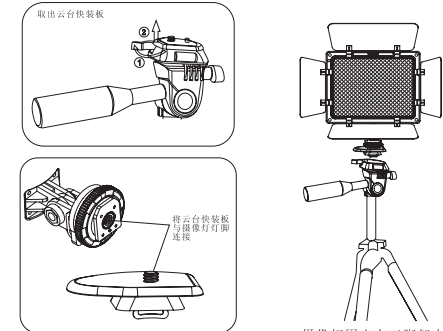
a、固定在单反相机、摄像机热靴上使用



b、通过附带的微型底座放置桌面或其他平面上使用

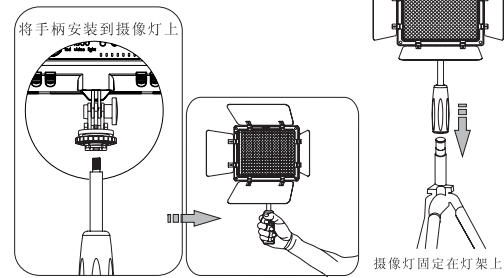


c、固定在灯架/三脚架上使用



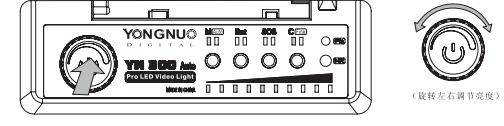
摄像灯固定在三脚架上

d、通过附带的手柄手持使用(如下图)

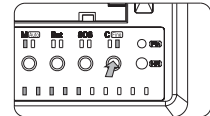


4、开机及手动模式

a、按电源开关，LED摄像灯点亮，向右旋转增加亮度，向左旋转减小亮度；(如下图)

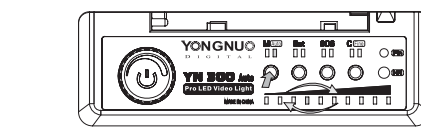


b、可通过CIN按钮切换到微调模式，此时亮度调节变得非常精细，满足您更高的调节要求。



5、自动模式

轻触Auto按钮，即切换至自动模式，在自动模式下，亮度指示灯循环点亮，摄像灯会根据环境的亮度自动调节。(注：在自动状态下，亮度不能手动调节，并且不支持遥控操作摄像灯)



6、电量测试

轻触Bat按钮，电量指示灯按顺序亮起，此时所显示的即为剩余可使用的电量。(注：低亮度时测试与高亮度时测试剩余电量是不相同的，测的是当前亮度下，可以使用的时间的长短)



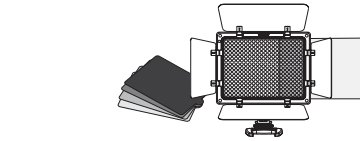
7、特别应用-----“SOS国际求救信号”

按SOS按键，点亮左边的功能指示灯为“SOS国际求救信号”；点亮右边的功能指示灯为“需要帮助信号”；两个同时点亮为“理解求救信号”。



4、更换色温板

本产品附带4块色温板，从产品侧面色温卡槽插入即可使用，满足您在不同的环境下使用。



五、遥控调光模式

a、产品附带的多功能红外遥控器可以调节本产品的亮度及开关，产品的前后各有一个红外接收器，将遥控器对准产品正面或者背面即可调节，遥控距离小于8米。

b、附带的多功能红外遥控同时可以控制佳能、尼康、索尼、宾得红外接收功能的单反相机。

六、产品规格

| | | | |
|-----|-----------|------|------------|
| 光源 | 300颗LED灯珠 | 光照角度 | 55° |
| 色温 | 5500K | 平均寿命 | 50000小时 |
| 显色性 | 大于或等于90% | 遥控距离 | 小于8米 |
| 功率 | 18瓦 | 重量 | 790g |
| 流明值 | 2280LM | 体积 | 173*153*43 |

所含物品：摄像灯 (1)、多功能红外遥控器 (1)、手柄 (1)、灯脚 (1)、收纳袋 (1)、微型底座 (1)、说明书 (1) 色温板 (4)
注：如有缺失请与经销商联系

七、故障分析及排除

在使用过程中，您可能遇到以下问题：

| 故障 | 原因 | 处理方法 |
|--------------------------------|---|------------------------|
| 打开电源开关完全无反应 | 电池电量不足 电路板损坏 | 使用新电池或充电后使用 返厂维修 |
| 亮度不足，调至最亮仍然很暗 | 电池电量不足 | 使用新电池或充电后使用 |
| 测试电量不准确，调高亮度时显示电量不足，调低亮度后电量又满了 | 电池电量测试所指示的时间长短。调高亮度后，需要的电量更多，所使用的时间变短，故电量显示变少 | 属于正常现象，无需处理 |
| 无法遥控摄像灯 | 没有对准红外接收头或者距离太远 | 遥控的距离小于8米，并对准摄像灯遥控即可 |
| 多功能遥控器不能遥控相机快门 | 相机红外接收功能未开启 | 根据相机自带的说明书，开启相机的红外接收功能 |

公司名称：深圳市永诺摄影器材股份有限公司

公司主页：www.hkyongnuo.com

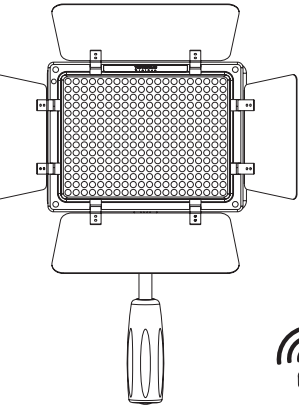
www.yongnuo.com.cn

公司地址：深圳市福田区华强北赛格科技园

二栋A511室

售后电话：4000013888

Pro LED Video Light YN 300 User Manual



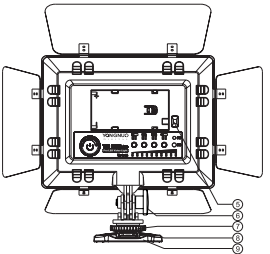
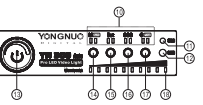
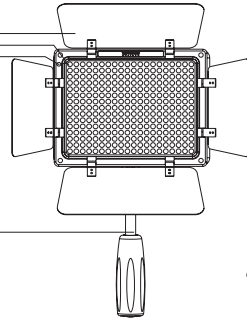
Please read this manual carefully before using the product and keep it properly for future reference.

Overview

First of all, thank you for using Yongnuo YN300 LED camera light. The camera light is formed by 300 LED light beads of extra-large luminous chips, its brightness can completely satisfy the use requirement under various environments; by adopting the encoder digital dimming mode, the camera light has accurate and reliable dimming and will not lead to the undesirable effects such as light shaking after using for a long time; besides, the camera light also has powerful functions of automatically controlling the brightness, remotely controlling and adjusting the brightness wirelessly, etc.

I. Product Structure

1. Reflector
2. LED Bead
3. Front IR Receiver
4. Handle
5. Battery lock catch
6. Adjusting Screw
7. Hot Shoe Fastening Knob
8. Metal Hot Shoe Base
9. Mini-type base
10. Functional indication lamp
11. Sensor
12. Post-position infrared receiver
13. Power switch/brightness adjusting rotary button
14. Manual/automatic mode switch pushbutton
15. Electric quantity testing pushbutton
16. "SOS International Distress Signal" switch pushbutton
17. Fine-adjusting switch pushbutton
18. Brightness indication lamp



II. Product Features

1. YN300 adopts 300 high-quality LED light beads of extra-large luminous chips, the brightness is higher, the light spot is more uniform and the service life is longer.
2. YN300 adopts the encoder digital dimming and can distinguish the rough dimming and fine dimming modes; therefore, the use is more convenient.
3. A built-in light sensing chip can automatically adjust the brightness of the camera light according to the environmental light intensity.
4. The infrared remote controller is configured, thus the brightness and the switch can be adjusted in off state.
5. The professional LED driving chip is adopted, the light is stable and the efficiency achieves 93%.
6. The camera light can be mounted on the camera as well as used by a handle.
7. Four color temperature plates are configured and suitable for using under different environments.

III. Method of Application

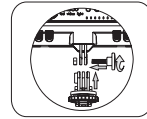
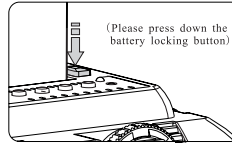
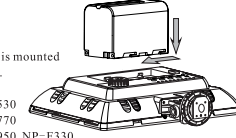
1. Battery Installation

When the lithium battery is mounted, the battery is mounted to a card groove according to the arrow direction.

Compatible Batteries: SonyNP-F series
NP-F750 NP-F550 NP-F950/B NP-F530
NP-F970 NP-F970/B NP-F570 NP-F770
NP-F960 NP-F930 NP-F930/B NP-F950 NP-F330

Note: it suggests using the battery with more than 4000mah capacity; this capacity battery can be used for about 90 minutes under the highest brightness, the battery shall be taken off when it is out of service, 2200 mah capacity at the highest brightness can be used for about 40 min; and 5800 mah at the highest brightness can be used for about 130 min.

When the lithium battery is dismounted, please press the battery lock catch and the pushbutton, and then take off the lithium battery.

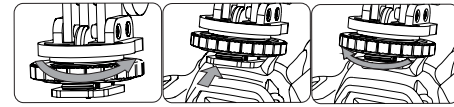


2. Camera Lamp Installation

First fasten the lamp base to the bottom of the product with the adjusting screw and then adjust the angle of the lamp as needed.

3. The camera lamp can be fastened as follows as needed.

a. To SLR/Camera Hot Shoe



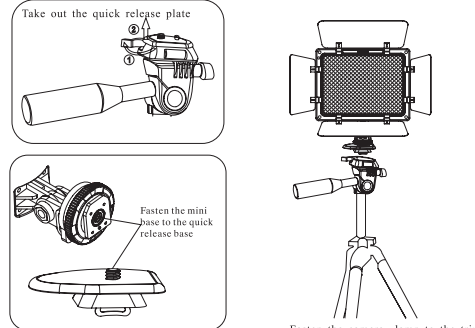
- (1). Screw the Hot Shoe Fastening Knob to the top in the direction of the arrow)
- (2). Insert the lamp into the camera/camera hot shoe base in the direction of the arrow.)
- (3). Tighten the Hot Shoe Fastening Knob in the direction of the arrow)

b. To Attached Mini Base Put on the Desktop or Other Flat Surfaces.



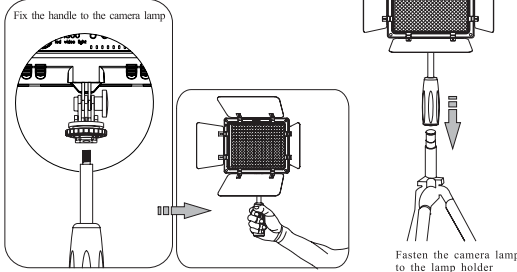
- (1). Screw the Hot Shoe Fastening Knob to the top in the direction of the arrow)
- (2). Insert the metal hot shoe into the mini base in the direction of the arrow)
- (3). Tighten the Hot Shoe Fastening Knob in the direction of the arrow)

c. To Lamp Holder/Tripod



Fasten the camera lamp to the tripod

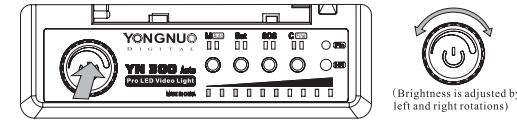
d. To the Attached Handle



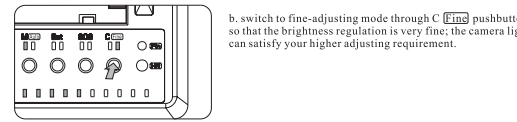
Fasten the camera lamp to the lamp holder

4. Start-up and manual mode

a. press the power switch and light the LED camera light; rightwards rotate to increase the brightness, or leftwards rotate to reduce the brightness;



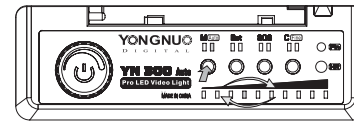
(Brightness is adjusted by left and right rotations)



b. switch to fine-adjusting mode through C pushbutton so that the brightness regulation is very fine, the camera light can satisfy your higher adjusting requirement.

5. Automatic mode

M pushbutton is slightly touched, thus the mode is switched to the automatic mode; under the automatic mode, the brightness indication lamp is circularly lighted, the camera light can be automatically adjusted according to the environmental brightness. (Note: under the automatic state, the brightness cannot be adjusted manually and the camera light cannot be remotely controlled)



6. Test of electric quantity

Bat pushbutton is slightly touched, electric quantity indication lamps are lighted in order; the displayed quantity is the rest available electric quantity. (Note: the rest electric quantity of test when the brightness is low is different from that of the test when the brightness is high, the service life is tested under the current brightness)



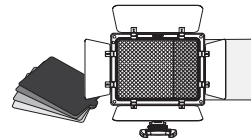
7. Special application---"SOS International Distress Signal"

SOS pushbutton is pressed, thus the functional indication lamp lighted at the left side is "SOS International Distress Signal", the functional indication lamp lighted at the right side is "Signal of Needing Help"; two indication lamps are lighted at the same time, which means "Distressed Signal Received"



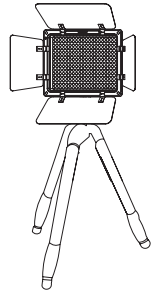
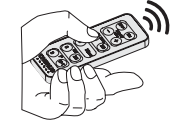
IV. CT Filters

This product comes with 4 CT filters. Simply insert the CT filters into the slot on the side of this product to meet your requirements in different environments.



V. Remote Control Mode

a. The product comes with multifunctional IR remote control can adjust the luminance and switch. Aim the remote control at the front or back of this product which is equipped with one IR receiver respectively to adjust the luminance at a remote control less than 8 meters.



b. The multifunctional IR remote control can also control Canon, Nikon, Sony and Pentax SLR with infrared reception.

VI. Product Specification

| | | | |
|--|---------------|-------------------------|------------|
| Light Source | 300 LED beads | Luminance Angle | 55° |
| Color Temperature | 5500K | Average Service Life | 50000H |
| Color Rendering Index | ≥90% | Remote Control Distance | <8 M |
| Power | 18W | Weight | 790g |
| Lumen | 2280LM | Size | 173*153*43 |
| Contents: Camera light (1), Multifunctional IR Remote (1), Handle (1), Light foot (1), Storage Bag (1), Mini Base (1), User Manual (1), CT Filters (4) Note: Please contact your dealer if anything is missing. | | | |

VII. Troubleshooting

In using this product, you may encounter the following problems.

| Description | Cause | Trouble-shooting |
|--|---|---|
| No reaction after power on | Low battery | Install new batteries or charge the batteries before use. |
| | Damaged circuit board | Send for repair. |
| Inadequate or low luminance at the highest grade | Low battery | Install new batteries or charge the batteries before use. |
| Inaccurate battery capacity test: low battery in high luminance and full battery in low luminance. | The battery capacity shown indicates the length of time available for use in the current luminance; a high luminance requires more power and shortens the length of time available for use, so the battery capacity shown is lower. | Normal and no measure needed. |
| The camera lamp can't be remote controlled. | Fail to aim at the IR receiver or too great remote control distance | Aim at the camera and less than 8 meters. |
| Multifunctional remote control fails to remote control the shutter. | The IR reception is not enabled. | Enable the IR reception according to the User Manual of the Camera. |

Hong Kong Yong Nuo Photographic Equipment Co., Ltd
Address : G/F,4 Bulkeley Street, Hung Hom, Kowloon, Hong Kong
After-sales : service@hkyongnuo.com
Tel:(86)755-837-62448
Web site:www. hkyongnuo.com
www.yongnuo.com.cn