



ZHIYUN V60 Fiveray 60W Light Wand User Guide

[Home](#) » [ZHIYUN](#) » ZHIYUN V60 Fiveray 60W Light Wand User Guide 

Contents

- 1 ZHIYUN V60 Fiveray 60W Light Wand
- 2 Product List
- 3 Get to Know ZHIYUN FIVERAY V60
- 4 Installing Modifiers
- 5 How to Use ZHIYUN FIVERAY V60
- 6 Buttons and Knobs
- 7 Operation Instruction
- 8 Firmware Upgrade
- 9 Product Specifications
- 10 Disclaimer and Warnings
- 11 Documents / Resources
 - 11.1 References
- 12 Related Posts



ZHIYUN V60 Fiveray 60W Light Wand



Brief Introduction

ZHIYUN FIVERAY V60 LED Light Wand is a high-intensity and portable handheld LED fill light that supports brightness/color temperature adjustment function. It is small in size yet performs exceptionally well, meeting the fill light requirements for shooting scenes such as video recording, live interviews, and still object photography. The product has the following highlights:

1. Freely adjustable brightness/color temperature with a wide range of applications.
2. Lightweight and portable, making it easier to move around for fill lighting.
3. High-intensity fill light that meets the fill light requirements for shooting in low-light environments.
4. High color rendering performance that accurately restores object colors.
5. Comes with a variety of lighting effects and the music mode, making creative shooting easy to achieve.
6. Delicate display screen for clear and convenient parameter settings.
7. The DynaVort system provides excellent cooling effect.
8. Multiple power supply methods for worry-free endurance.
9. A variety of accessories for precise lighting.

WARNING

- This product is not waterproof. Prevent contact with any kind of liquid with the ZHIYUN FIVERAY V60. Never

use the product in the rain or a humid environment.

- If water accidentally enters the device when using, please stop using it immediately and contact the company or authorized maintenance personnel for maintenance, and continue to use it only when the maintenance is finished.
- Do not expose this product to corrosive chemicals, inflammable and explosive materials.
- Do not touch the heating part when the product is working to avoid getting burned.
- Do not wrap or block the fans to avoid cooling effect damage.
- Do not turn the product directly to the eyes to avoid eyesight damage.
- Do not expose this product to an environment above 40°C .

Battery safety precautions:

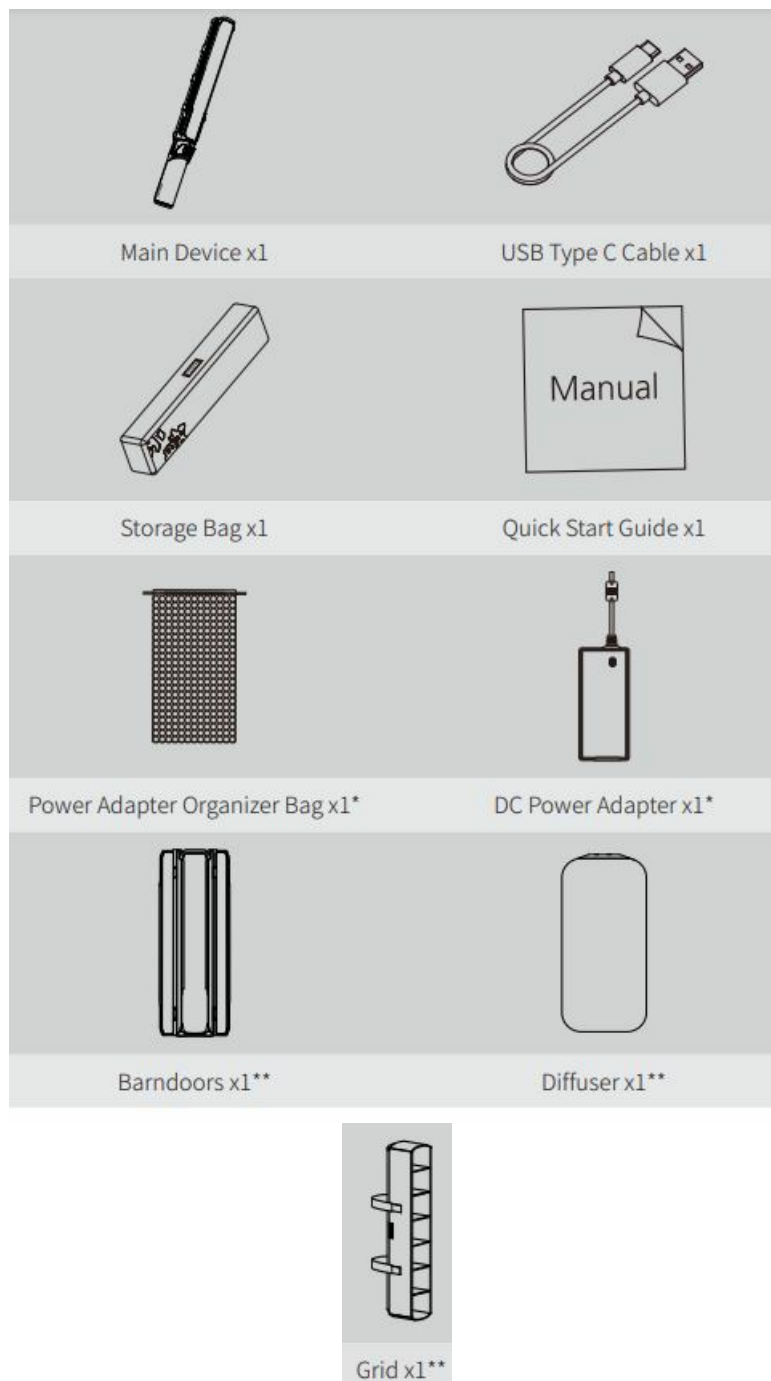
1. It is strictly prohibited to use batteries that are not provided by ZHIYUN. If you need to replace the battery, please contact ZHIYUN or designated agents. ZHIYUN will not be responsible for any battery accidents or equipment malfunctions caused by using batteries that are not officially provided by ZHIYUN.
2. If the battery bulges, leaks, or has other abnormalities, please stop using it immediately and contact ZHIYUN customer service or designated agents for further processing.
3. Do not completely discharge the battery and store it for a long time to prevent the battery from entering an over-discharged state and causing damage to the battery cell, which may make it impossible to recover and reuse.

BE CAREFUL

1. This product is a high-precision control device. Damage may be caused to the product if dropped or subject to external force, and this may result in malfunction.
2. Please keep your hands dry while using the product and use soft dry cloth for cleaning.
3. Keep this product out of the reach of children.
4. When not using this product, please disconnect the external power supply.
5. Do not place any other items on top of this product to avoid damage to this product.
6. Protect the product from dust and sand during use.
7. Before storing this product, please make sure it is completely cooled and store it in a dry and ventilated place.
8. Do not disassemble this product on your own. In the event of malfunctions, it should be repaired by ZHIYUN or authorized maintenance personnel.

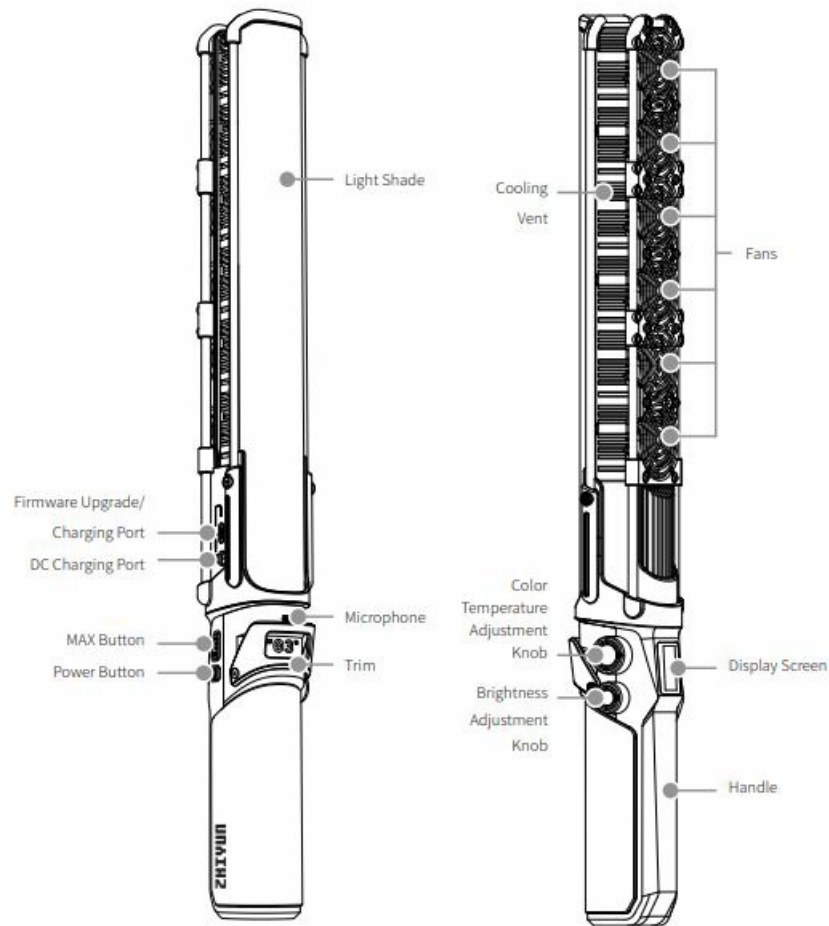
Product List

Before using this product, please check carefully that all the following items are included in the product package. In case that any item is found missing, please contact ZHIYUN or your local selling agent.



- Items marked “*” are included in ZHIYUN FIVERAY V60 standard and COMBO package.
- Items marked “**” are only included in ZHIYUN FIVERAY V60 COMBO package.

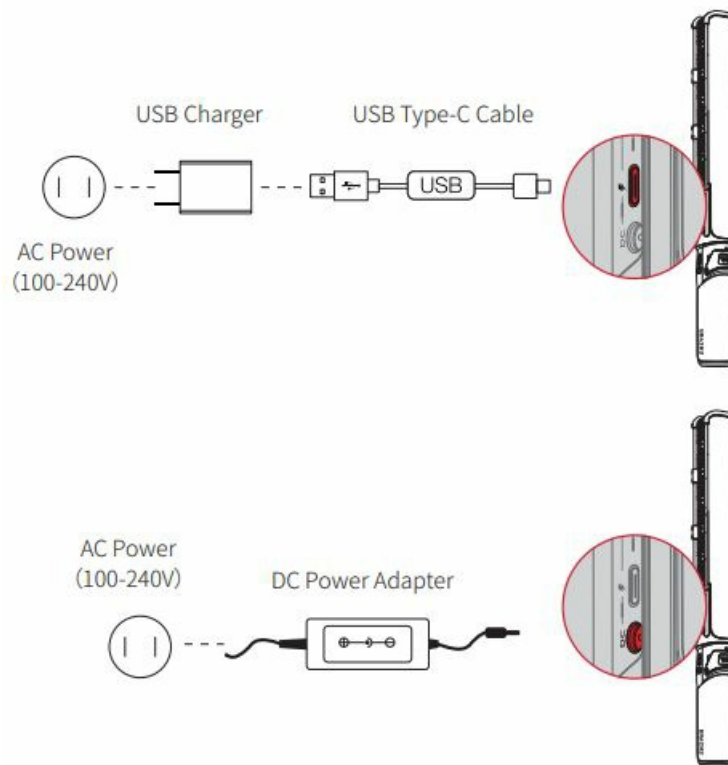
Get to Know ZHIYUN FIVERAY V60



How to Charge

FIVERAY V60 adopts high-capacity built-in lithium battery, providing a solidly long runtime. The battery level is displayed on the screen. The following methods show how to charge your FIVERAY V60 (you can still use the light wand when charging) :

1. Use a USB Type-C cable to connect the USB charger to the Type-C port of FIVERAY V60 and plug the USB charger into an AC socket. It is recommended to use USB chargers that meet the PD protocol and higher than 100W in power. When charging while in use, the USB charger prioritizes power supply for the light wand. Any remaining power will be used to charge the battery, with a maximum charging power of 25W.
2. Connect the DC Power Adapter to the DC charging port and an AC socket to charge V60.



TIP:

1. It is recommended to fully charge V60 before using it. Low battery might impair the product performance.
2. USB chargers and USB cables that support PD fast charging are not included in the package. V60 standard and COMBO package offer a DC power adapter.

Installing Modifiers

Installing/Detaching Barn Doors

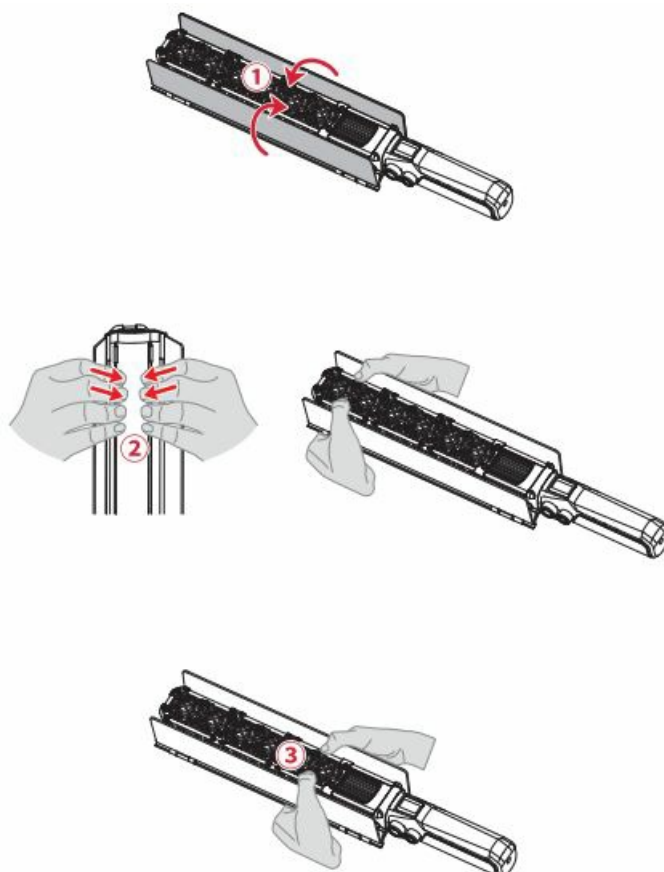
Installing

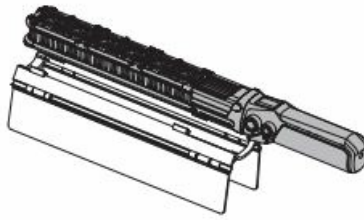
1. Expand the barn doors to both sides
2. Put the light wand (light shade side down) at the top of the barn door groove. Make sure the top of the light wand is aligned with the top of the groove. Press to ensure the light wand is engaged in the barn door groove
3. Adjust the position of the barn doors according to actual use



Detaching

Expand the barn doors to the position shown in the figure ① . Separate the upper part of the light wand from the groove with your thumbs as shown in the figure ② , while using other fingers to slide the light wand towards the outer side of the groove ③ . Use the same way to slide the lower part of the light wand out of the groove ④ to remove the barn doors.

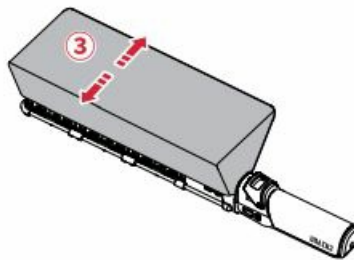
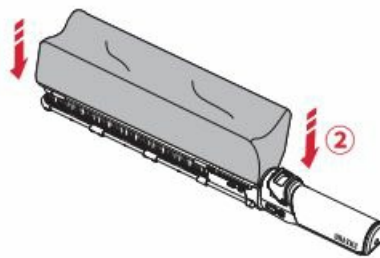
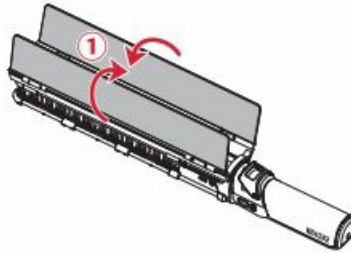




Installing/Detaching the Diffuser

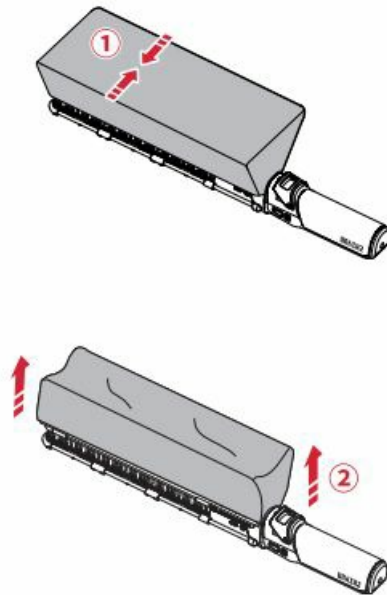
Installing

Install the barn doors to the light wand and expand the barn doors to both sides to their vertical state ① . Put the diffuser onto the connection of the barn doors and the groove ② . Push the barn doors outward to put up the diffuser ③ .



Detaching

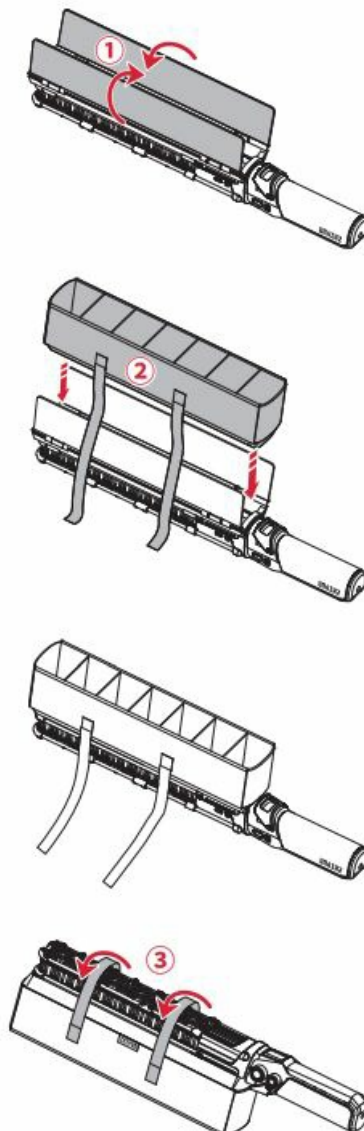
Push the barn doors inward until the spacing of two barn doors becomes smaller ① and remove the diffuser from the barn doors ② .



Installing/Detaching the Grid

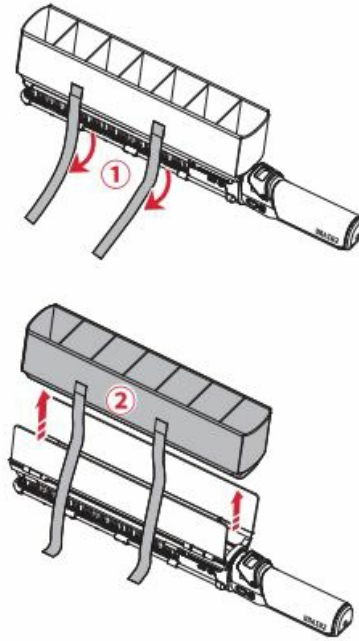
Installing

Install the barn doors to the light wand and expand the barn doors to both sides to their vertical state ① . Loosen the straps and make sure both sides of the grid are aligned with the barn doors ② . Push the grid to engage in the barn doors ③ and stick the straps to the other side of the grid.



Detaching

Loosen the straps ① and remove the grid from the barn doors ② .



How to Use ZHIYUN FIVERAY V60

- DO NOT stare at the LED chips when the device is operating.
- The IP rating of the outer case is IP20.

TIP:

1. During the use of the light wand, when the temperature rises to a certain degree, the fan will automatically turn on to achieve the purpose of heat dissipation for the light wand.
2. When the temperature is too high, the high-temperature protection mechanism of the light wand will be activated to ensure the safe use of the light wand.

Buttons and Knobs

Power Button:

- **Single press+press and hold:** Turn on the light.
- **Press and hold:** Turn off the light.

MAX Button:

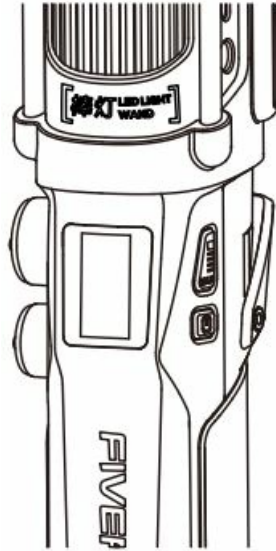
- **Single Press:** Turn on/off MAX power mode.

Brightness Adjustment Knob:

- **Turn:** Adjust brightness level.
- **Press:** Quickly adjust brightness level. Press and hold: Turn on/off special effect mode.

Color Temperature Adjustment Knob:

- **Turn:** Adjust color temperature value. Switch among special effect types (in special effect mode).
- **Press:** Quickly adjust color temperature value.
- **Press and hold:** Turn on/off music mode.



Operation Instruction

1. Brightness/Color Temperature Setting

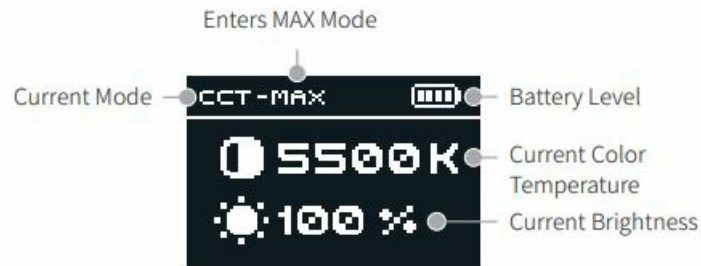
Turn on the ZHIYUN FIVERAY V60, press the brightness/color temperature adjustment knob once to quickly set the brightness/color temperature value. Turn the brightness/color temperature adjustment knob to finely adjust the brightness/color temperature value. Please set the appropriate brightness/color temperature value according to your actual scenarios.



2. MAX Mode Setting

ZHIYUN FIVERAY V60 can be powered in two ways to achieve MAX mode:

1. Connect a DC power adapter to the light wand's DC charging port and an AC power outlet.
2. Use a USB Type-C charging cable to connect a USB charger to the light wand's Type-C charging port, and then plug the USB charger into an AC power outlet. Once the light wand is connected to power, turn it on and press the MAX button once to activate MAX mode. The light wand will output its maximum power. Press the brightness/color temperature adjustment knob once to quickly set the brightness/color temperature value. Turn the brightness/color temperature adjustment knob to finely adjust the brightness/color temperature value. Please set the appropriate brightness/color temperature value according to your actual scenarios.



TIP:

1. It is recommended to use a DC power adapter to power the light wand.
2. Please use a USB charger that supports the PD charging protocol and has an output power greater than or equal to 100W, otherwise MAX mode cannot be enabled.
3. When the MAX mode is activated, the brightness of the light wand defaults to 100%, with a color temperature of 4200K.
4. In order to provide a better user experience, MAX mode cannot be enabled when the light wand is powered by the built-in battery. At this time, pressing on the MAX mode button will prompt on the display screen that the conditions for enabling MAX mode are: using a PD adapter with an output power greater than or equal to 100W, or using a DC power adapter with an output voltage/current of 24V/5A.



3. Light Effect Mode

ZHIYUN FIVERAY V60 comes with light effect mode that can create special lighting atmospheres such as SOS, TV, broken light bulb, candle, lightning, fire, etc. After turning on the light wand, press and hold the brightness adjustment knob to activate the light effect mode. Turn the color temperature adjustment knob to switch among different light effect types. Single-press the brightness adjustment knob to quickly set the brightness value under the current lighting effect. Turn the brightness adjustment knob to finely adjust the brightness value under the current lighting effect. After use, press and hold the brightness adjustment knob again to turn off the light effect mode.



4. Music Mode

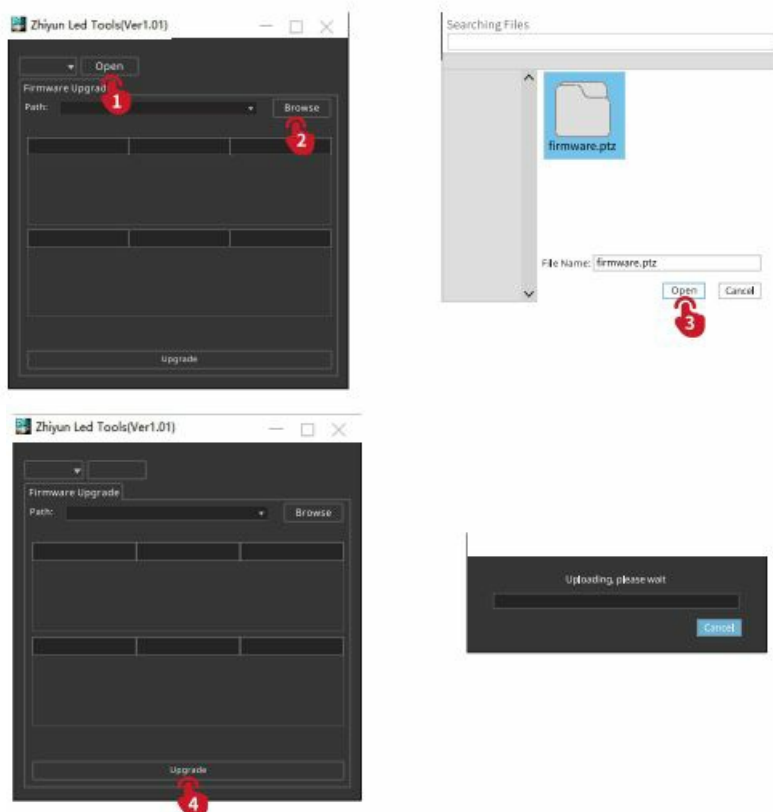
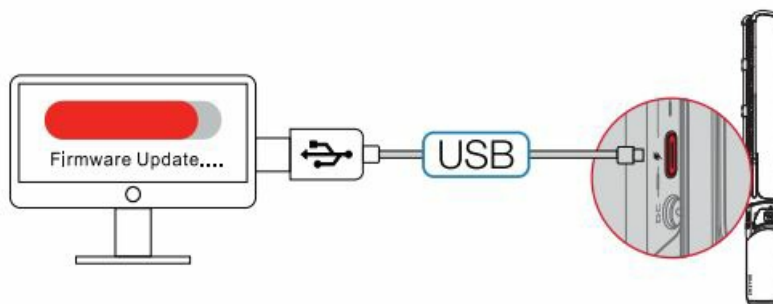
Turn on ZHIYUN FIVERAY V60, press and hold the color temperature adjustment knob to activate the music mode. Set an appropriate brightness/color temperature value according to your scenario. The lighting can change in real-time according to the rhythm of the music. Press and hold the color temperature adjustment knob again to turn off the music mode.



Firmware Upgrade

V60 supports firmware upgrade with “Zhiyun Led Tools”. The following steps show how to upgrade the firmware:

1. Visit the official website of ZHIYUN (www.zhiyun-tech.com), go to the V60 product page, click “Download”, find the Zhiyun Led Tools and firmware and download.
2. Unzip the firmware for the files with the “.ptz” file extension.
3. Use a USB Type-C data cable to connect the Type-C firmware upgrade port of the V60 and the USB port of the computer.
4. Open “Zhiyun Led Tools”, click “Open”, click “Firmware Upgrade”. Click “Browse” under “Path” to select the latest firmware downloaded (with the “.ptz” file extension), and click “Upgrade” at the bottom to upgrade firmware. V60 will be turned off automatically once the upgrade is successful.



Product Specifications

Product Model PL112

Product Model:PL112

Battery Capacity	2600mAh	
Max Power	100W	
Color Temperature Range	2700K-6500K	
Dimming Range	0-100%	
CRI/TLCI	CRI ≥ 96 TLCI ≥ 98	
LED Chip	60pcs cool light + 60pcs warm light	
Charging Time (PD)	1H 21min	Lab Data 1
Charging Time (DC)	1H 27min	Lab Data 2
CCT Mode 5500K/100% Illuminance	1730(lux)	Lab Data 3
Max Power Mode 4200K/100% Illuminance	2470(lux)	Lab Data 4
Runtime (Max Power)	24min	Lab Data 5
Operation Temperature	-10°C~ 40°C	
Product Size	448mm x 53 x 53mm	
Weight	891g	
Power Adapter Rated Output Voltage/Current	24V/5A	

- Lab Data 1: When the temperature is 25°C , the charging time is 1h 21 mins via 25W Power Delivery. The actual charging time varies under different conditions: the lower the charging temperature, the lower the charging current, leading to a longer charging time.
- Lab Data 2: When the temperature is 25°C , the charging time is 1h 27 mins via 25W DC charging. The actual charging time varies under different conditions: the lower the charging temperature, the lower the charging current, leading to a longer charging time.
- Lab Data 3 : The data is collected in the following conditions: 25°C temperature, indoor illuminance lower than 0.1lux, test distance 1m, and the color temperature is set at 5500K with 100% brightness. The illuminance is 1730 lux. The actual illuminance varies under different conditions.
- Lab Data 4 : The data is collected in the following conditions: 25°C temperature, indoor illuminance lower than 0.1lux, test distance 1m. The light wand is powered by a DC adapter and under MAX mode. The color temperature is set at 4200K with 100% brightness. The illuminance is 2470 lux. The actual illuminance varies under different conditions.
- Lab Data 5: With 25°C temperature and a full battery level, set the product at 4200K color temperature with 100% brightness under CCT mode, and the battery runtime is 24 mins. The actual battery runtime varies under different conditions: the longer the operating time, the higher the charge and discharge frequency, and the less battery activity, leading to a shorter battery runtime. The above data is gathered from internal experiments of ZHIYUN laboratories. Under different scenarios, data is different to some extent. Please refer to the actual use.

Disclaimer and Warnings

Thank you for purchasing this product. The information contained herein affects your safety, legitimate rights and obligation. Please read this instruction carefully to ensure proper configuration before use. Failure to read and follow this instruction and warnings herein may result in serious injury to you or bystanders, or damage to your device or property. Guilin Zhishen Information Technology Co., Ltd (hereinafter referred to as “ZHIYUN”) reserves all rights for final explanation of this instruction and other documents related to this product. The information is subject to update without notice. Please visit www.zhiyun-tech.com to obtain the latest product information. By using this product, you hereby signify that you have read this document carefully and that you understand and agree to abide by the terms and conditions herein. You agree that you are solely responsible for your own conduct while using this product, and for any consequences thereof. You agree to use this product only for purposes that are proper and in accordance with all terms, precautions, practices, policies and guidelines ZHIYUN has made and may make available. ZHIYUN accepts no liability for damage, injury or any legal responsibility incurred directly or indirectly from the use of this product. Users shall observe safe and lawful practices including, but not limited to, those set forth herein. ZHIYUN™ is the trademark of Guilin Zhishen Information Technology Co., Ltd and its affiliates. All product names or trademarks referred to herein are trademarks or registered trademarks of their respective holders.

Reading Tips

- Legends
- Hints and Tips
- Important

Safe Operation Instructions

Read the ENTIRE User Guide to become familiar with the features of this product before operating. Failure to operate the product correctly can result in damage to the product or personal property and cause serious injury. This is a sophisticated product. It must be operated with caution and common sense and requires some basic mechanical ability. Failure to operate this product in a safe and responsible manner could result in injury or damage to the product or other property. This product is not intended for use by children without direct adult supervision. DO NOT use with incompatible components or in any way otherwise as mentioned or instructed in the product documents provided by ZHIYUN. The safety guidelines herein contain instructions for safety, operation and maintenance. It is essential to read and follow all of the instructions and warnings in the User Guide, prior to assembly, setup or use, in order to operate the product correctly and avoid damage or serious injury.

Warranty Period

1. Customers are entitled to replacement or free repair service in case of quality deficits found in the product within 15 days upon receipt of the product.
2. Customers are entitled to free repair service from ZHIYUN for any product proven defective in material or workmanship that results in product failure during normal consumer usage and conditions within the valid warranty period, which is 12 months counting from the date of selling. However, warranty period varies by product component and country of purchase. Please contact our after-sales service team on ZHIYUN official website or your place of purchase for detailed warranty information.

Warranty Exclusions

1. Products subjected to unauthorized repair, misuse, collision, neglect, mishandling, soaking, accident, and

unauthorized alteration.

2. Products subjected to improper use or whose labels or security tags have been torn off or altered.
3. Products whose warranty has expired.
4. Products damaged due to force majeure, such as fire, flood, lightning, etc.

Warranty Claim Procedure

1. If failure or any problem occurs to your product after purchase, please contact a local agent for assistance, or you can always contact ZHIYUN's customer service through email at info@zhiyun-tech.com or website at www.zhiyuntech.com.
2. Your local agent or ZHIYUN's customer service will guide you through the whole service procedure regarding any product issue or problem you have encountered. ZHIYUN reserves the right to reexamine damaged or returned products.

Warranty Card

Customer Information		
Customer Name:	Phone Number:	
Address:		
Sales Information		
Sales date:	Product Serial Number:	
Distributor Name:		
Distributor's Contact Number:		
First Maintenance Record		
Service Date:	Repairman Signature:	
Cause of Problem:		
Service Result:	<input type="checkbox"/> Solved	<input type="checkbox"/> Unsolved <input type="checkbox"/> Refunded/Replaced

Contact Card



Website



Weibo



Vimeo



Google+



Facebook
(Zhiyun Support)



Facebook
(Zhiyun Tech)



Youku



Youtube



Wechat





Instagram


- **Tel:** +86 400 900 6868
- **USA Hotline:** +1 808-319-6137, 9:00-18:00 GMT-7, Mon-Fri
- **Europe Hotline:** +49 0 61018132180, 10:00-17:00 GMT+1, Mon-Fri
- **Web:** www.zhiyun-tech.com
- **E-mail:** info@zhiyun-tech.com
- **Address:** 09 Huangtong Road, Tieshan Industrial Zone, Qixing District, Guilin, 541004, Guangxi, China



Documents / Resources

<div><div>The following features are available in this PDF document:</div><div><div><div><div>Quick Keyword Search</div><div>Use the keyword in the search bar to find the content.</div></div></div><div><div><div><div>Quick Jump between Chapters</div><div>Click the chapter number to jump to the chapter content.</div></div></div></div><div><div>Need a printer or a scanner? We have a list of recommended products for you.</div></div></div></div>	<div><div>ZHIYUN V60 Fiveray 60W Light Wand [pdf] User Guide</div><div>V60, V60 Fiveray 60W Light Wand, Fiveray 60W Light Wand, 60W Light Wand, Light Wand, Wand</div></div>
---	--

References

-  [ZHIYUN-TECH](#)
- [User Manual](#)